

N MEXICO OIL CONSERVATION COMMISS  
WELL LOCATION AND ACREAGE DEDICATION PLAT

Form C-102  
Supersedes C-128  
Effective 1-1-65

All distances must be from the outer boundaries of the Section

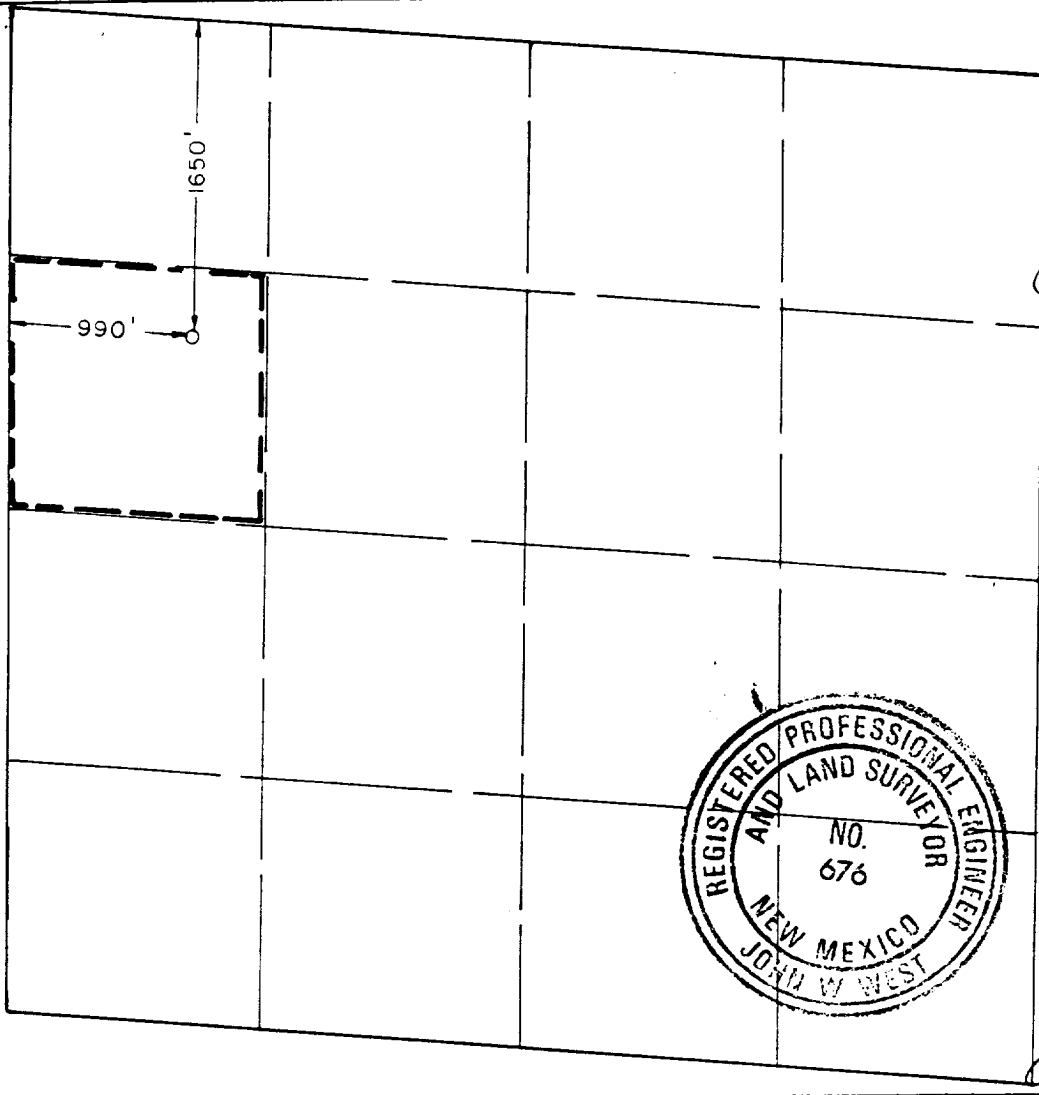
Operator MALLON OIL COMPANY		Lease AMOCO FEDERAL			Well No. 10
Unit Letter E	Section 27	Township 26S	Range 29E	County EDDY	
Actual Footage Location of Well: 990 feet from the WEST line and 1650 feet from the NORTH line					
Ground Level Elev. 2881.4	Producing Formation DELAWARE		Pool UNDES. BRUSHY DRAW DELAWARE	Dedicated Acreage: 40 Acres	

- Outline the acreage dedicated to the subject well by colored pencil or hachure marks on the plat below.
- If more than one lease is dedicated to the well, outline each and identify the ownership hereof (both as to working interest and royalty).
- If more than one lease of different ownership is dedicated to the well, have the interests of all owners been consolidated by communitization, unitization, force-pooling, etc?

RECEIVED BY  
JAN 19 1987  
O. C. D.  
ARTESIA, OFFICE

Yes  No If answer is "yes," type of consolidation \_\_\_\_\_  
If answer is "no," list the owners and tract descriptions which have actually been consolidated. (Use reverse side of this form if necessary.) \_\_\_\_\_

No allowable will be assigned to the well until all interests have been consolidated (by communitization, unitization, forced-pooling, or otherwise) or until a non-standard unit, eliminating such interests, has been approved by the Commission.



CERTIFICATION

I hereby certify that the information contained herein is true and complete to the best of my knowledge and belief.

Name *Arthur R. Brown*  
Arthur R. Brown

Position  
Agent

Company  
MALLON OIL COMPANY

Date  
JANUARY 13, 1987

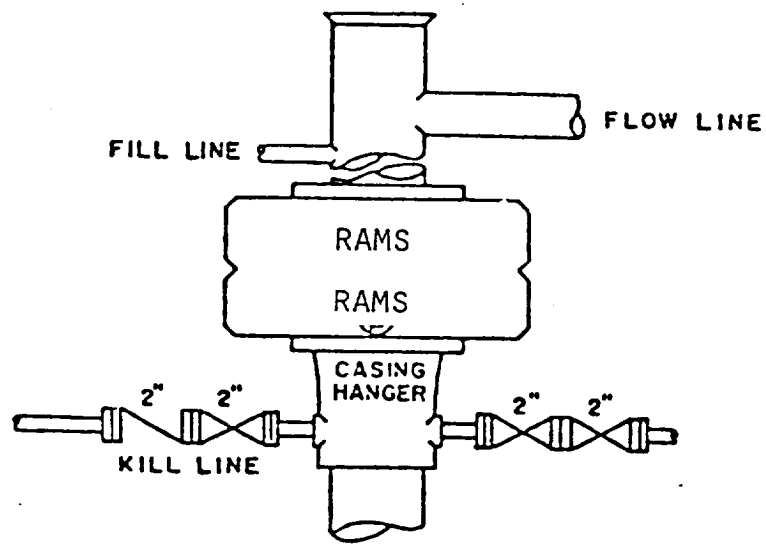
I hereby certify that the well location shown on this plat was plotted from field notes of actual surveys made by me or under my supervision, and that the same is true and correct to the best of my knowledge and belief.

Date Surveyed  
JANUARY 12, 1987

Registered Professional Engineer and/or Land Surveyor

*John W. West*  
Certificate No. JOHN W. WEST 676

Ronald J. Eidson 3239



BOP STACK

3000 PSI WORKING PRESSURE

BOP ARRANGEMENT

SUPPLEMENTAL DRILLING DATA

MALLON OIL COMPANY  
WELL NO.10 AMOCO FEDERAL

1. SURFACE FORMATION: Quaternary.

2. ESTIMATED TOPS OF GEOLOGIC MARKERS:

Rustler Anhydrite	300'
Delaware	2870'
Bell Canyon	2900'
Cherry Canyon	3700'
Brushy Canyon	5150'

3. ANTICIPATED POSSIBLE HYDROCARBON BEARING ZONES:

Cherry Canyon      Oil

4. PROPOSED CASING AND CEMENTING PROGRAM:

<u>CASING SIZE</u>	<u>SETTING DEPTH</u>		<u>WEIGHT</u>	<u>GRADE</u>	<u>JOINT</u>
	<u>FROM</u>	<u>TO</u>			
8-5/8"	0	400'	24#	K-55	STC
5-1/2"	0	5200'	14#	K-55	STC

8-5/8" casing will be cemented with approximately 250 sacks of Class "C" cement. Cement to circulate.

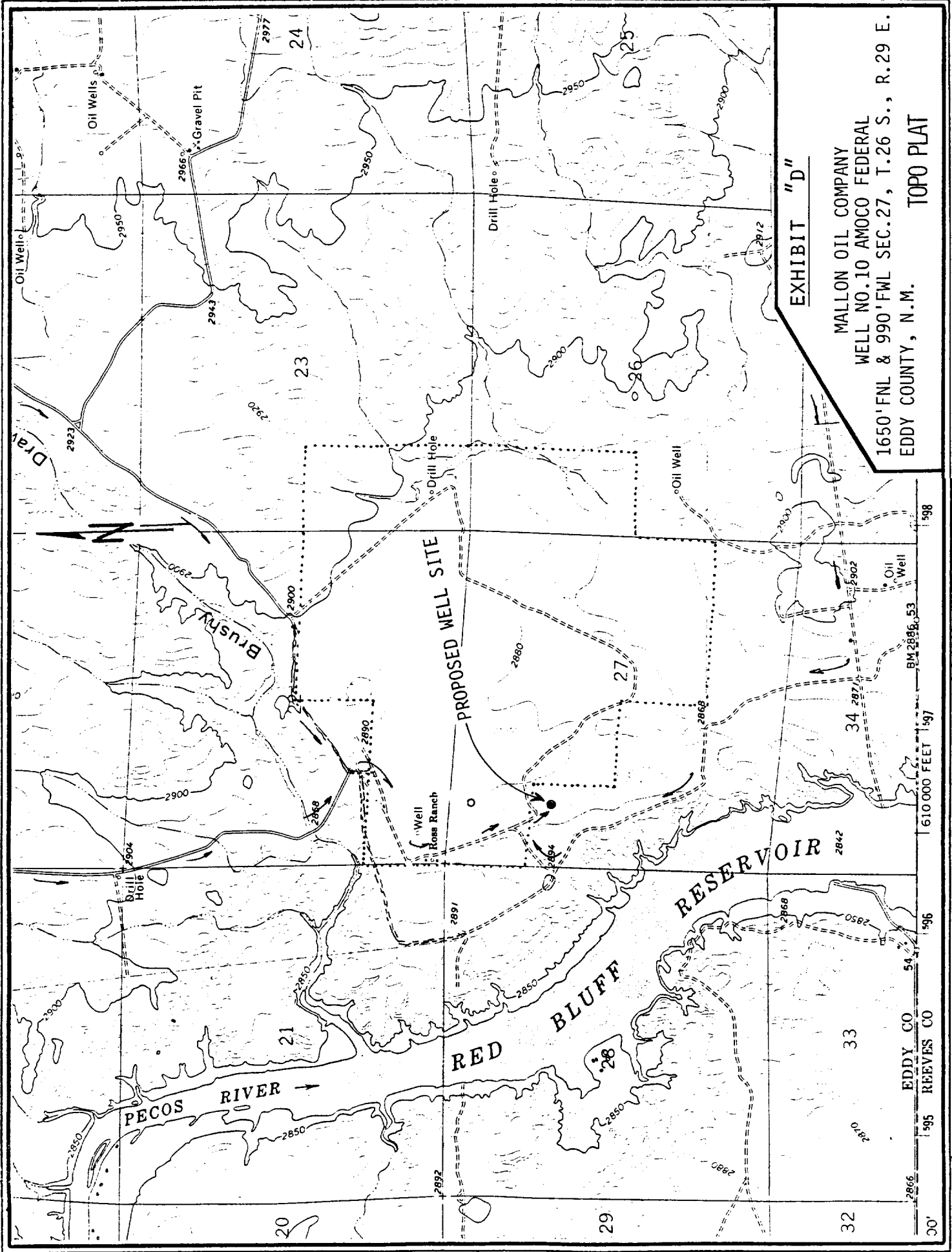
5-1/2" casing will be cemented with approximately 300 sacks of cement.

Equivalent or adequate grades and weights of casing may be substituted at time casing is run, depending on availability.

5. PRESSURE CONTROL EQUIPMENT:

A 3000 psi working pressure, double ram type preventer will be in use while drilling below the surface casing.

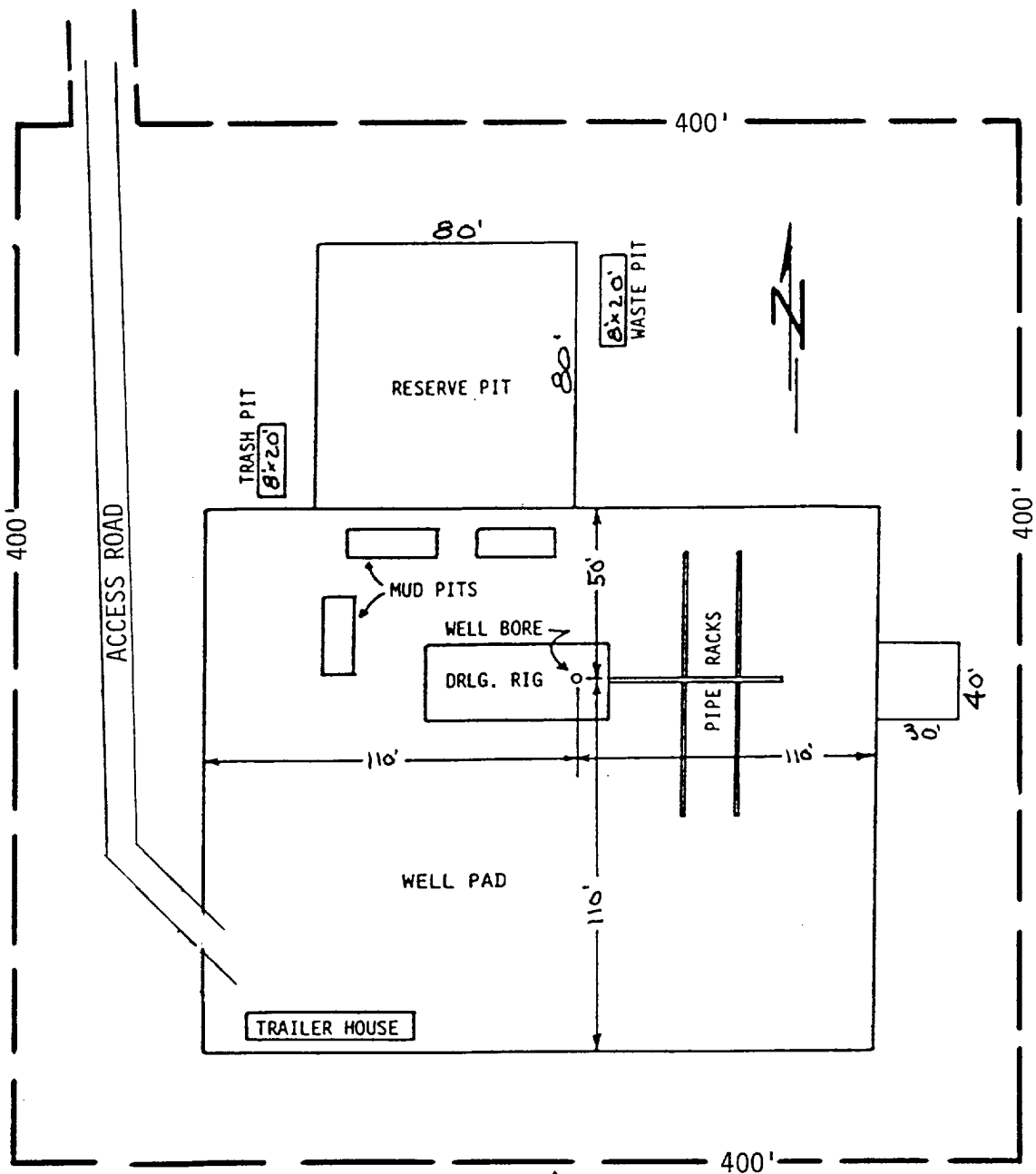
A BOP sketch is attached.



**EXHIBIT "D"**

MALLON OIL COMPANY  
 WELL NO. 10 AMOCO FEDERAL  
 1650' FNL & 990' FWL SEC. 27, T. 26 S., R. 29 E.  
 EDDY COUNTY, N.M. **TOPO PLAT**

598  
 BM 2886.53  
 34 2877  
 610 000 FEET 1597  
 596  
 EDDY CO 54  
 REEVES CO  
 595



AREA ARCHAEOLOGICALLY CLEARED

EXHIBIT "C"  
 MALLON OIL COMPANY  
 WELL NO.10 AMOCO FEDERAL  
 DRILLING RIG LAYOUT  
 SCALE: None