

NEW MEXICO OIL CONSERVATION COMMISSION
WELL LOCATION AND ACREAGE DEDICATION PLAT

Form C-102
Supersedes C-128
Effective 1-1-65

All distances must be from the outer boundaries of the Section

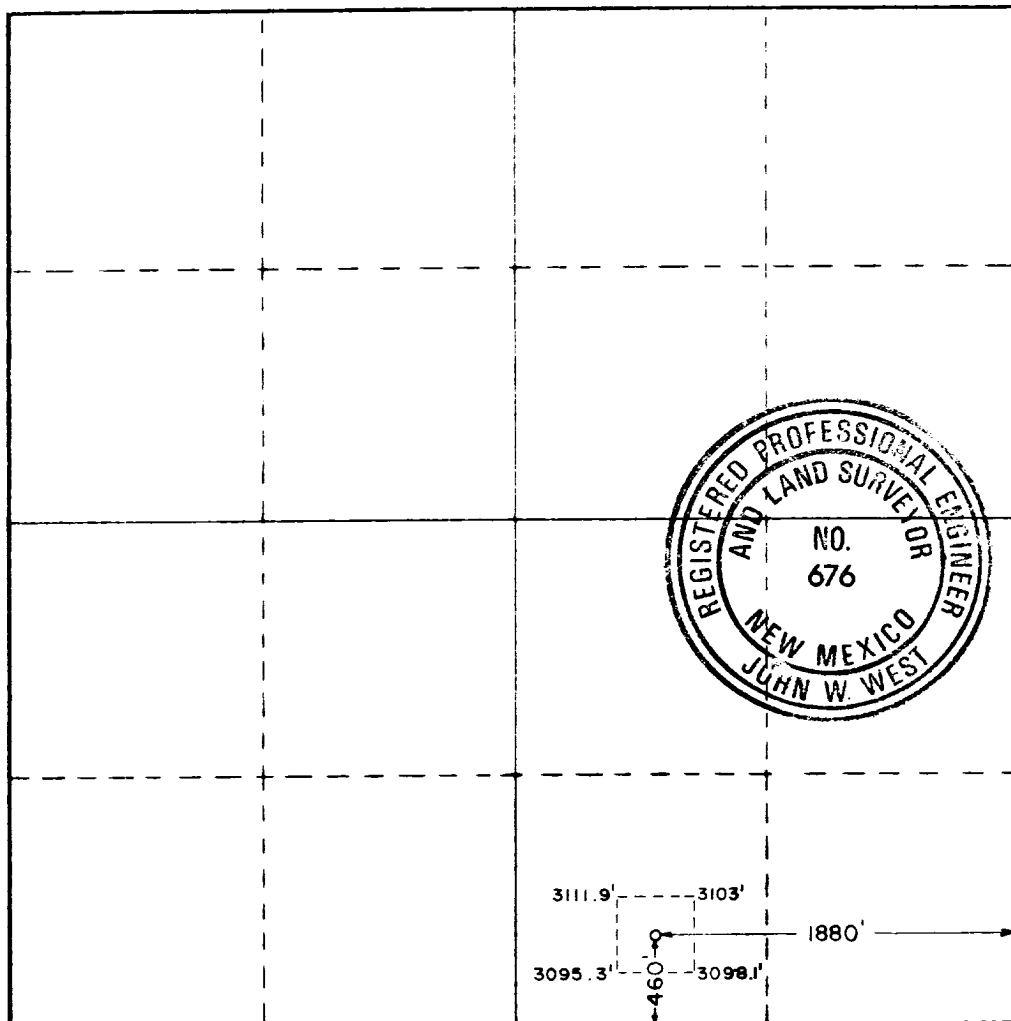
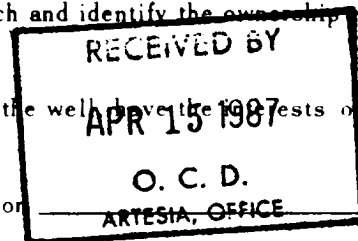
Operator GRACE OIL CO. Corinne B. Grace		Lease GINGER FEDERAL		Well No. 1
Tract Letter 0	Section 24	Township 26 SOUTH	Range 30 EAST	County EDDY
Actual Footage Location of Well: 460 feet from the SOUTH line and 1880 feet from the EAST line				
Ground Level Elev. 3113.4	Producing Formation Delaware	Pool Und. E. Ross Draw - Del -	Dedicated Acreage: 40 Acres	

1. Outline the acreage dedicated to the subject well by colored pencil or hatchure marks on the plat below.
2. If more than one lease is dedicated to the well, outline each and identify the ownership hereof (both as to working interest and royalty).
3. If more than one lease of different ownership is dedicated to the well, have the interests of all owners been consolidated by communitization, unitization, force-pooling, etc?

☐ Yes ☐ No If answer is "yes," type of consolidation

If answer is "no," list the owners and tract descriptions which have actually been consolidated. (Use reverse side of this form if necessary.)

No allowable will be assigned to the well until all interests have been consolidated (by communitization, unitization, forced-pooling, or otherwise) or until a non-standard unit, eliminating such interests, has been approved by the Commission.



CERTIFICATION

I hereby certify that the information contained herein is true and complete to the best of my knowledge and belief.

Mike Butts

Name	Mike Butts
Position	Agent
Company	Corinne B. Grace
Date	April 14, 1987

I hereby certify that the well location shown on this plat was plotted from field notes of actual surveys made by me or under my supervision, and that the same is true and correct to the best of my knowledge and belief.

Date Surveyed	April 13, 1987
Registered Professional Engineer and/or Land Surveyor	<i>John W. West</i>
Certificate No.	JOHN W. WEST, 676
	RONALD J. EIDSON, 3239