

NEW MEXICO OIL CONSERVATION COMMISSION
WELL LOCATION AND ACREAGE DEDICATION PLAT

Form C-102
 Supersedes C-128
 Effective 1-1-65

All distances must be from the outer boundaries of the Section.

Operator Enron Oil & Gas Company HNG OIL COMPANY			Lease BAR 4 FEDERAL		Well No. 1
Unit Letter L	Section 4	Township 25 SOUTH	Range 29 EAST	County EDDY	
Actual Footage Location of Well: 1830 feet from the SOUTH line and 660 feet from the WEST line					
Ground Level Elev. 2943.7	Producing Formation Atoka		Pool Rustler Bluff Atoka Gas	Dedicated Acreage: W/2 320 Acres	

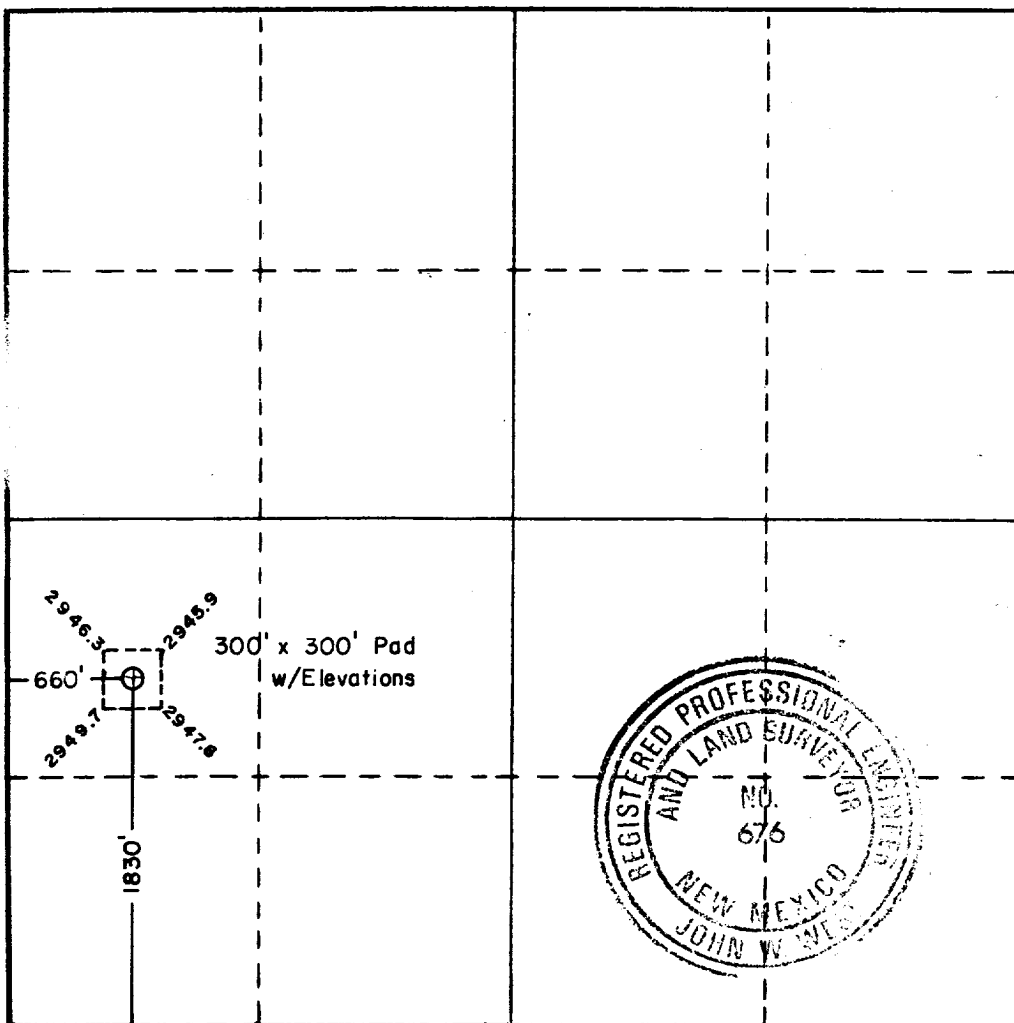
1. Outline the acreage dedicated to the subject well by colored pencil or hatchure marks on the plat below.
2. If more than one lease is dedicated to the well, outline each and identify the ownership thereof (both as to working interest and royalty).
3. If more than one lease of different ownership is dedicated to the well, have the interests of all owners been consolidated by communitization, unitization, force-pooling, etc?

RECEIVED BY
APR 27 1987
 O. C. D.
 ARTESIA, OFFICE

☐ Yes ☐ No If answer is "yes," type of consolidation _____

If answer is "no," list the owners and tract descriptions which have actually been consolidated. (Use reverse side of this form if necessary.) _____

No allowable will be assigned to the well until all interests have been consolidated (by communitization, unitization, forced-pooling, or otherwise) or until a non-standard unit, eliminating such interests, has been approved by the Commission.



CERTIFICATION

I hereby certify that the information contained herein is true and complete to the best of my knowledge and belief.

Betty Gildon

Name Betty Gildon
Position Regulatory Analyst
Company Enron Oil & Gas Company
Date March 6, 1987

I hereby certify that the well location shown on this plat was plotted from field notes of actual surveys made by me or under my supervision, and that the same is true and correct to the best of my knowledge and belief.

Date Surveyed APRIL 3, 1987
Registered Professional Engineer and/or Land Surveyor <i>John W. West</i>
Certificate No. JOHN W. WEST, 676 RONALD J. EIDSON, 3239

94560