

UNITED STATES  
DEPARTMENT OF THE INTERIOR  
BUREAU OF LAND MANAGEMENT

APPLICATION FOR PERMIT TO DRILL, DEEPEN, OR PLUG BACK

1a. TYPE OF WORK

DRILL ☒

DEEPEN ☐

PLUG BACK ☐

b. TYPE OF WELL

OIL  
WELL ☒

GAS  
WELL ☐

OTHER ☐

SINGLE  
ZONE ☒

RECEIVED

MULTIPLE  
ZONE ☐

2. NAME OF OPERATOR

Ralph E. Williamson

3. ADDRESS OF OPERATOR

P.O. Box 16 Midland, Texas 79702

4. LOCATION OF WELL (Report location clearly and in accordance with any State requirements)

At surface

610 510' FSL & 907' FWL

At proposed prod. zone

610 510' FSL & 907' FWL

14. DISTANCE IN MILES AND DIRECTION FROM NEAREST TOWN OR POST OFFICE\*

14 1/2 mi. SE of Malaga, New Mexico

15. DISTANCE FROM PROPOSED\*

LOCATION TO NEAREST  
PROPERTY OR LEASE LINE, FT.  
(Also to nearest drlg. unit line, if any)

510'

18. DISTANCE FROM PROPOSED LOCATION\*

TO NEAREST WELL, DRILLING, COMPLETED,  
OR APPLIED FOR, ON THIS LEASE, FT.

1000'

16. NO. OF ACRES IN LEASE

56.19

19. PROPOSED DEPTH

6250'

17. NO. OF ACRES ASSIGNED  
TO THIS WELL

40

20. ROTARY OR CABLE TOOLS

Rotary

21. ELEVATIONS (Show whether DF, RT, GR, etc.)

2866. 2864.5 GR

22. APPROX. DATE WORK WILL START\*

September 15, 1987

23. PROPOSED CASING AND CEMENTING PROGRAM

SIZE OF HOLE	SIZE OF CASING	WEIGHT PER FOOT	SETTING DEPTH	QUANTITY OF CEMENT
17 1/2"	13 3/8"	54.5#	350'	350 sx circulate
11"	8 5/8"	24# & 32#	2750'	250 sx tie back to [redacted]
7 7/8"	5 1/2"	15.5#	6250'	1000 sx in 2 stages surface csq.

IN ABOVE SPACE DESCRIBE PROPOSED PROGRAM: If proposal is to deepen or plug back, give data on present productive zone and proposed new productive zone. If proposal is to drill or deepen directionally, give pertinent data on subsurface locations and measured and true vertical depths. Give blowout preventer program, if any.

24.

SIGNED

*Ralph E. Williamson*

TITLE

Operator

DATE

July 31, 1987

(This space for Federal or State office use)

PERMIT NO.

APPROVAL DATE

APPROVED BY

TITLE

DATE

10 9 87

CONDITIONS OF APPROVAL, IF ANY:

\*See Instructions On Reverse Side

**NEW MEXICO OIL CONSERVATION COMMISSION  
WELL LOCATION AND ACREAGE DEDICATION PLAT**

Form C-102  
Supersedes C-128  
Effective 1-1-65

All distances must be from the outer boundaries of the Section

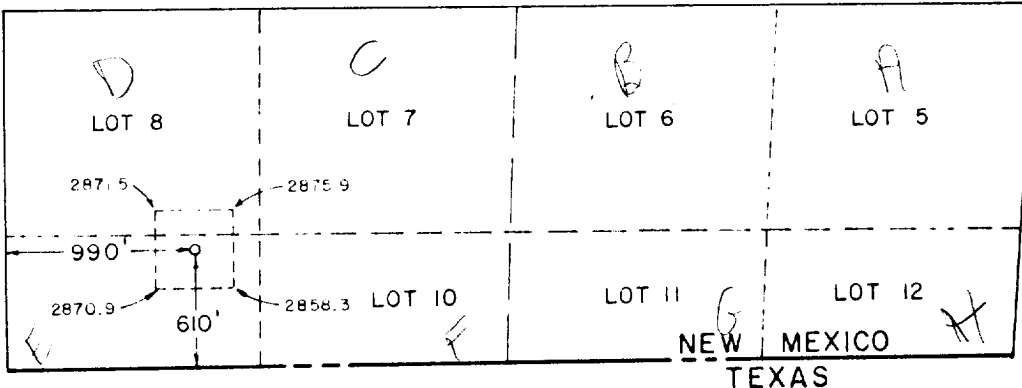
Operator <b>Ralph Williamson</b>			Lease <b>State Line Federal</b>		Well No. <b>2</b>
Unit Letter <b>E</b>	Section <b>35</b>	Township <b>26 South</b>	Range <b>29 East</b>	County <b>Eddy</b>	
Actual Footage Location of Well: <b>610</b> feet from the <b>south</b> line and <b>990</b> feet from the <b>west</b> line					
Ground Level Elev. <b>2866.0</b>	Producing Formation <b>Cherry Canyon</b>	Pool <b>DELAWARE</b>	Dedicated Acreage: <b>20.58</b> Acres		

1. Outline the acreage dedicated to the subject well by colored pencil or hatchure marks on the plat below.
2. If more than one lease is dedicated to the well, outline each and identify the ownership thereof (both as to working interest and royalty).
3. If more than one lease of different ownership is dedicated to the well, have the interests of all owners been consolidated by communitization, unitization, force-pooling, etc?

☐ Yes ☐ No If answer is "yes," type of consolidation \_\_\_\_\_

If answer is "no," list the owners and tract descriptions which have actually been consolidated. (Use reverse side of this form if necessary.) \_\_\_\_\_

No allowable will be assigned to the well until all interests have been consolidated (by communitization, unitization, forced-pooling, or otherwise) or until a non-standard unit, eliminating such interests, has been approved by the Commission.



**CERTIFICATION**

I hereby certify that the information contained herein is true and complete to the best of my knowledge and belief.

*Kala D. Schmidt*  
Name

**Kala D. Schmidt**

Position  
**Production**

Company  
**Ralph E. Williamson**

Date  
**August 7, 1987**

I hereby certify that the well location shown on this plat was plotted from field notes of actual surveys made by me or under my supervision, and that the same is true and correct to the best of my knowledge and belief.

Date Surveyed  
**September 11, 1987**

Registered Professional Engineer and/or Land Surveyor

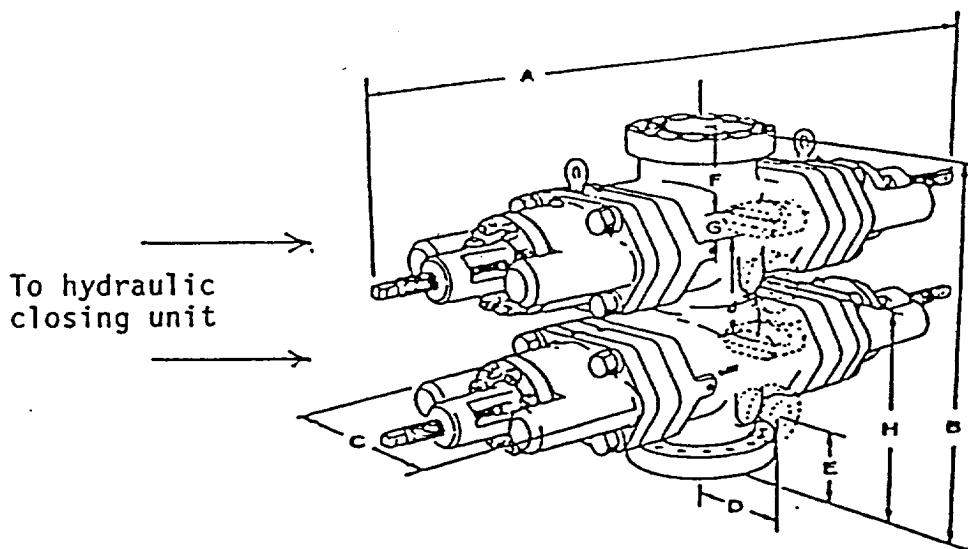
*John W. West*  
Certificate No. **JOHN W. WEST 676**



EXHIBIT "E"

BOP Diagram

After 8 5/8" intermediate casing has been set and cemented, an 11" double ram BOP, as shown below, will be put on the hole. This blowout preventer will be connected to a hydraulically controlled closing unit. The pressure rating on this BOP is 3000# and will have a blank and 5 1/2" drill pipe rams.



RALPH E. WILLIAMSON

STATELINE FEDERAL #2

## SUPPLEMENTAL DRILLING DATA

RALPH E. WILLIAMSON  
WELL STATELINE FEDERAL #2

1. SURFACE FORMATION: Quaternary Alluvium

2. ESTIMATED TOPS OF GEOLOGIC MARKERS:

Rustler Anhydrite	350'
Top Upper Salt	650'
Lamar Shale	2900'
Ramsey Sand	2925'
Olds Sand	2950'
Top Cherry Canyon	4150'
Top Brushy Canyon	5100'

3. ANTICIPATED POSSIBLE WATER AND HYDROCARBON BEARING ZONES:

Fresh Water	above 100'
Delaware (oil)	3025'
Brushy Canyon (oil)	5100' - 5150' - 5600' - 5650'
Lower Brushy Canyon (oil)	6150' - 6250'

4. PROPOSED CASING AND CEMENTING PROGRAM:

Casing program is shown on Form 9-331 C.

Hole for surface casing will be drilled to a depth below fresh water zones. 13-3/8" surface casing will then be run to 350', below all fresh water zones and will be cemented to the surface with 350 sacks of Class "C" cement.

8-5/8" casing will be run and cemented at 2750', prior to entering delaware section and will be cemented with 250 sacks of Class "C" cement at 2750', tying same back into ~~surface~~ surface csg.

5-1/2" production casing will be cemented at a total depth if significant shows are encountered in the Brushy Canyon formation, with 1000 sacks Class "C" cement 50/50 poz mix cement in stages with DV tool set at 4600' plus or minus.

5. PRESSURE CONTROL EQUIPMENT:

Pressure control equipment will consist of a 3000# double ram hydraulically controlled blow-out preventer and a 3000# choke manifold.

6. CIRCULATING MEDIUM:

The circulating medium will be fresh water down to 350 feet and down to a depth of 1000' out from under surface. Brine water will be used in the rest of the hole to TD. The fresh water left over from the surface hole and used down to 1000' will be naturally saturated down to 2750', while drilling the 11' intermediate hole. All extra makeup water will be produced brine water.

7. AUXILARY EQUIPMENT:

Not Applicable.

8. TESTING, LOGGING AND CORING PROGRAM:

Formation test will be made by conventional drill stem test; however none are anticipated.

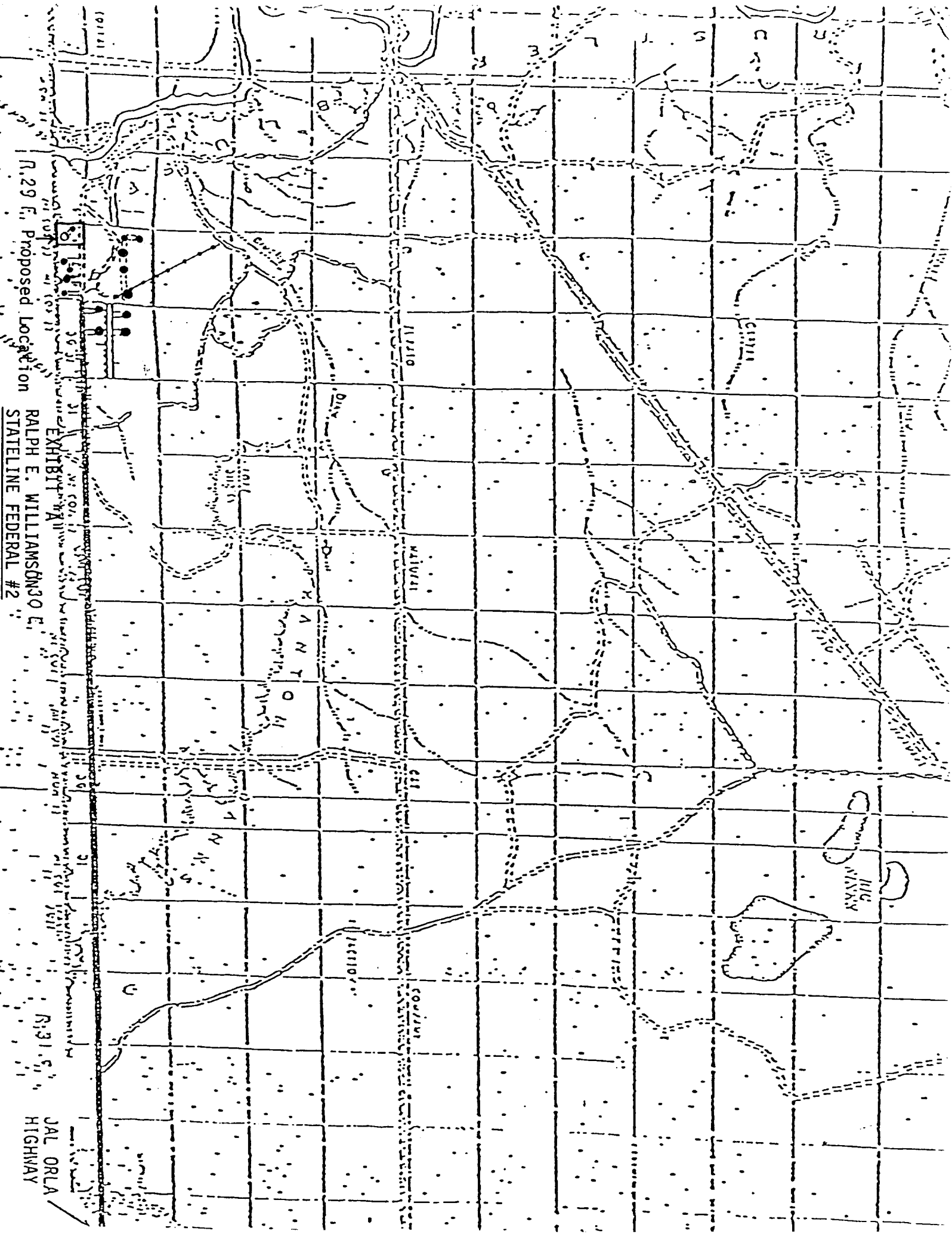
It is planned that a compensated neutron-density gamma ray and dual laterolog will be run when total depth is reached, with a backup computer analysis utilizing these logs.

9. ABNORMAL PRESSURES, TEMPERATURES OR HYDROGEN SULFIDE GAS:

None anticipated.

10. ANTICIPATED STARTING DATE:

It is planned that operations will commence on September 15, 1987, or as soon as the application is approved.



R. 29 E. Proposed Location

R. 31 E. JAL ORLA  
STATELINE FEDERAL #2

EXHIBIT A

HIG  
MOUNTAIN



---200'---

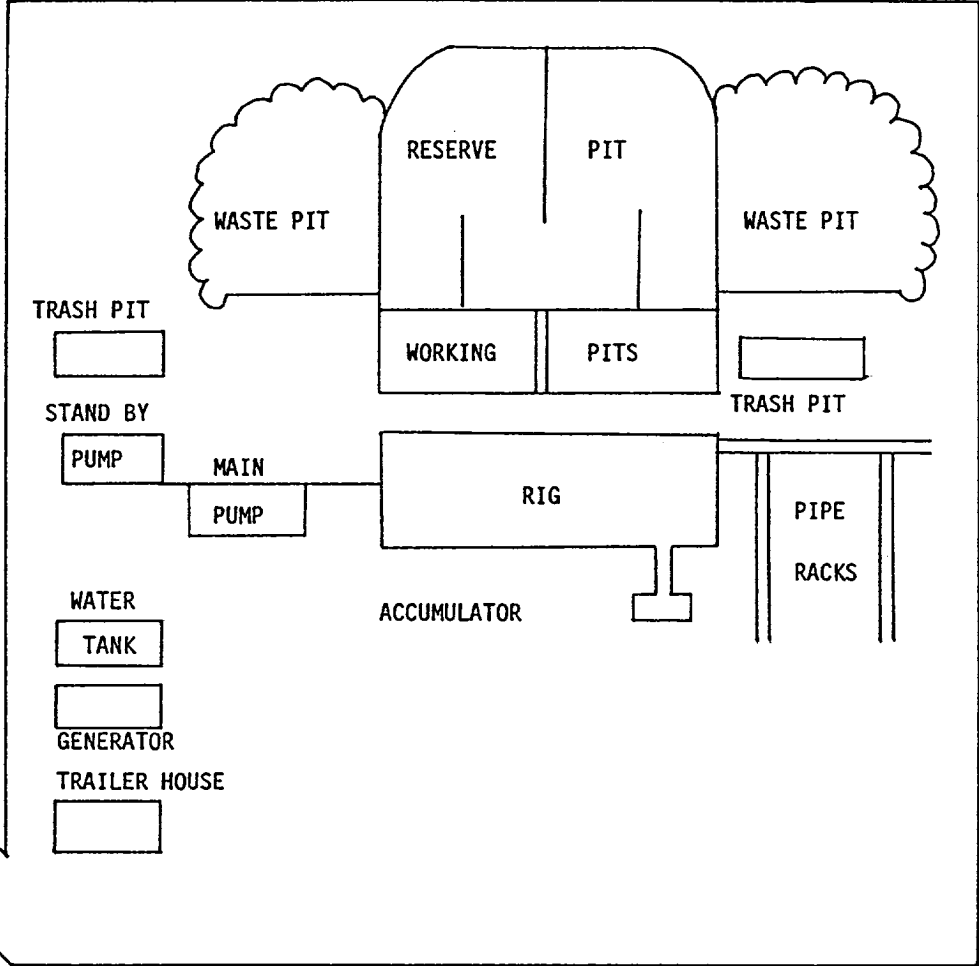


EXHIBIT "D"

RALPH E. WILLIAMSON  
STATELINE FEDERAL #2

Sec. 35, T-26-S, R-29-E  
EDDY COUNTY, NEW MEXICO