

UNITED STATES
DEPARTMENT OF THE INTERIOR
BUREAU OF LAND MANAGEMENT

APPLICATION FOR PERMIT TO DRILL, DEEPEN, OR PLUG BACK

1a. TYPE OF WORK

DRILL ☒

DEEPEN ☐

PLUG BACK ☐

b. TYPE OF WELL

OIL
WELL ☒

GAS
WELL ☐

OTHER

2. NAME OF OPERATOR

Texaco Producing Inc.

3. ADDRESS OF OPERATOR

P. O. Box 728, Hobbs, New Mexico 88240

4. LOCATION OF WELL (Report location clearly and in accordance with any State requirements.)

At surface

1750' FNL & 2045' FEL (Unit Letter 1111)

At proposed prod. zone

Same

14. DISTANCE IN MILES AND DIRECTION FROM NEAREST TOWN OR POST OFFICE*

60 Miles Southwest of Jal, New Mexico

15. DISTANCE FROM PROPOSED*

LOCATION TO NEAREST
PROPERTY OR LEASE LINE, FT.
(Also to nearest dril. unit line, if any)

553'

18. DISTANCE FROM PROPOSED LOCATION*

TO NEAREST WELL, DRILLING, COMPLETED,
OR APPLIED FOR, ON THIS LEASE, FT.

1994'

16. NO. OF ACRES IN LEASE

319.8

17. NO. OF ACRES ASSIGNED
TO THIS WELL

40

19. PROPOSED DEPTH

5300'

20. ROTARY OR CABLE TOOLS

Rotary

21. ELEVATIONS (Show whether DF, RT, GR, etc.)

2971' GR

22. APPROX. DATE WORK WILL START*

August 10, 1987

23.

PROPOSED CASING AND CEMENTING PROGRAM

SIZE OF HOLE	SIZE OF CASING	WEIGHT PER FOOT	SETTING DEPTH	QUANTITY OF CEMENT
24"	16"	65#	40'	Redimix to surface
15"	11-3/4"	42#	500'	500 sacks CIRCULATE
11"	8-5/8"	24#	3,000'	1150 sacks
7-1/8"	5-1/2"	15.5#	5,300'	1350 sacks

CEMENTING PROGRAM

SURFACE CASING: 500 sacks Class "H" w/2% CaCl & 1/4# Flocele (15.6 ppg, 1.18 cu. ft./sx., 5.2 Gal. Water/Sx.).

INTERMEDIATE CASING: 900 sacks Light Weight w/15# Salt and 1/4# Flocele, (12.7 PPG, 2.1 Cu. Ft./Sx., 10.9 Gal. Water/Sx.) followed by 250 sacks Class "H" w/1/4# Flocele, (15.6 PPG, 1.18 Cu. Ft./Sx., 5.2 Gal. Water/Sx.).

PRODUCTION CASING: 1st Stage: 350 sacks Light Weight w/1/4# Flocele (12.7 PPG, 1.84 Cu. Ft./Sx, 9.9 Gal Water/Sx.) followed by 250 sacks Class "H" w/1/4# Flocele (15.6 PPG, 1.18 Cu. Ft./Sx., 5.2 Gal. Water/Sx.)

CONTINUED ON PAGE 2

IN ABOVE SPACE DESCRIBE PROPOSED PROGRAM: If proposal is to deepen or plug back, give data on present productive zone and proposed new productive zone. If proposal is to drill or deepen directionally, give pertinent data on subsurface locations and measured and true vertical depths. Give blowout preventer program, if any.

24.

SIGNED

L. J. Seeman

TITLE

Dist. Petr. Engr.

DATE

July 13, 1987

(This space for Federal or State office use)

PERMIT NO.

APPROVAL DATE

APPROVED BY

TITLE

DATE

CONDITIONS OF APPROVAL, IF ANY:

*See Instructions On Reverse Side

All distances must be from the outer boundaries of the Section.

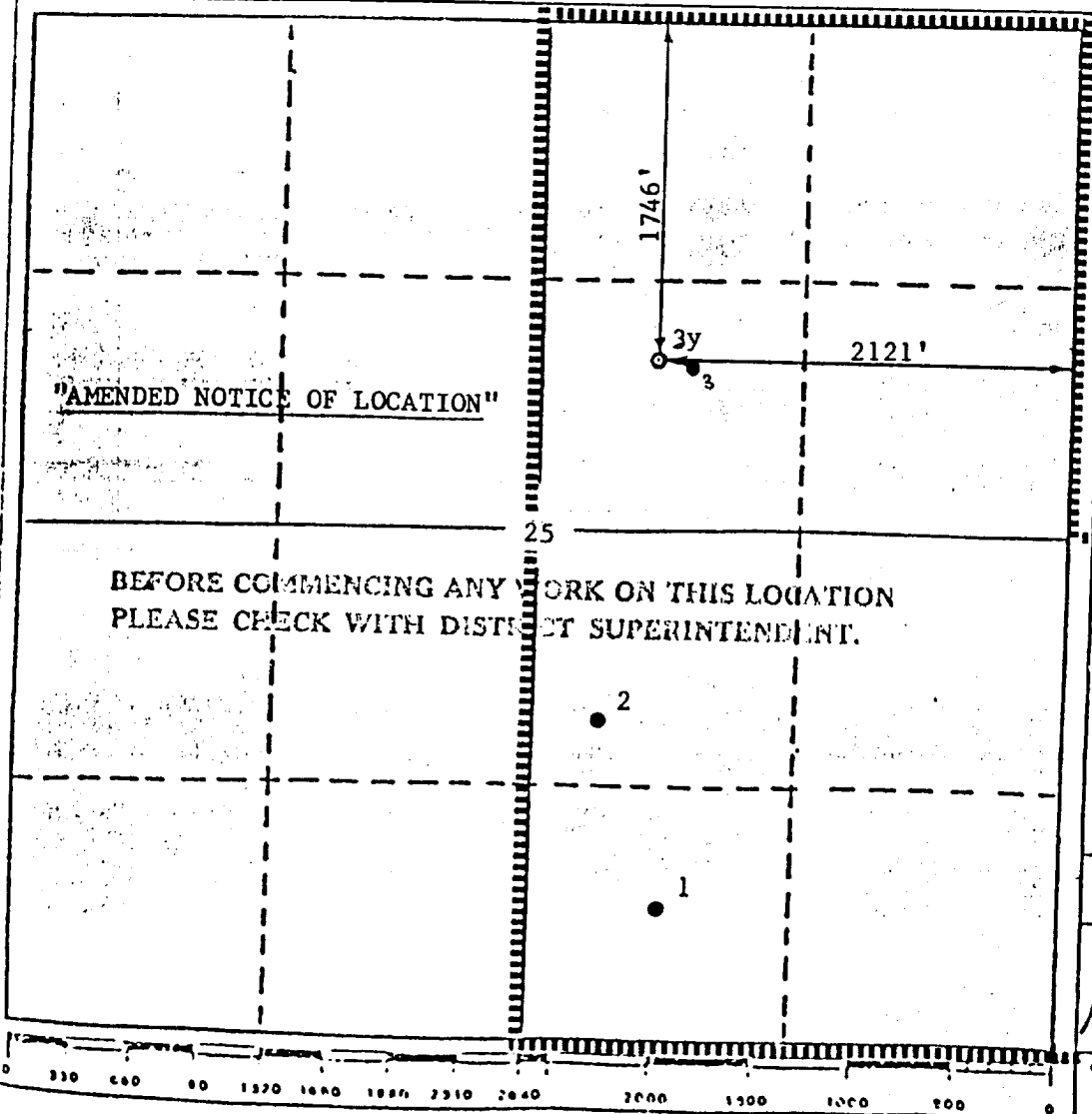
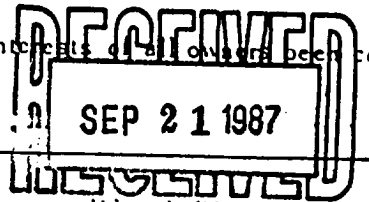
Operator Texaco Producing Inc.			Lease Salt Mountain 25 Federal			Well No. 3Y
Unit Letter G	Section 25	Township 26-S	Range 29-E	County Eddy		
Actual Postage Location of Well: 1746' feet from the North line and 2121' feet from the East line						
Ground Level Elev. 2970'	Producing Formation Cherry Canyon		Pool Brushy Draw Delaware		Dedicated Acreage: 40 Acres	

1. Outline the acreage dedicated to the subject well by colored pencil or hatchure marks on the plat below.
2. If more than one lease is dedicated to the well, outline each and identify the ownership thereof (both as to working interest and royalty).
3. If more than one lease of different ownership is dedicated to the well, have the interests of all owners been consolidated by communitization, unitization, force-pooling, etc?

☐ Yes ☐ No If answer is "yes," type of consolidation _____

If answer is "no," list the owners and tract descriptions which have actually been consolidated. (Use reverse side of this form if necessary.) _____

No allowable will be assigned to the well until all interests have been consolidated (by communitization, unitization, forced-pooling, or otherwise) or until a non-standard unit, eliminating such interests, has been approved by the Division.



CERTIFICATION

I hereby certify that the information contained herein is true and complete to the best of my knowledge and belief.

Bethel L. Filand
Name

Bethel L. Filand
Position

Division Surveyor
Company

Texaco Producing Inc.
Date

September 10, 1987

I hereby certify that the well location shown on this plat was plotted from field notes of actual surveys made by me or under my supervision, and that same is true and correct to the best of my knowledge and belief.

DATE
September 8, 1987
Professional Engineer
and/or Land Surveyor
Bethel L. Filand
Certification No. 1488