

UNITED STATES
DEPARTMENT OF THE INTERIOR
BUREAU OF LAND MANAGEMENT

SUBMIT IN TRI-STATE
(Other instructions on
reverse side)

30-015-25910 C/BF
Form approved.
Budget Bureau No. 1004-0136
Expires August 31, 1985

APPLICATION FOR PERMIT TO DRILL, DEEPEN, OR PLUG BACK

1a. TYPE OF WORK

DRILL ☒

DEEPEN ☐

PLUG BACK ☐

b. TYPE OF WELL

OIL
WELL ☒

GAS
WELL ☐

OTHER

SINGLE
ZONE ☐

RECEIVED
MULTIPLE
ZONE ☐

2. NAME OF OPERATOR

Corinne B. Grace

3. ADDRESS OF OPERATOR

P. O. Box 1418, Carlsbad, NM 88220

4. LOCATION OF WELL (Report location clearly and in accordance with any State requirements.)
At surface

1980' FSL & 1980' FEL
At proposed prod. zone

APR 29 '88
ARTESIA, OFFICE

14. DISTANCE IN MILES AND DIRECTION FROM NEAREST TOWN OR POST OFFICE*

21 Miles Southeast of Malaga, NM

10. DISTANCE FROM PROPOSED*
LOCATION TO NEAREST
PROPERTY OR LEASE LINE, FT.
(Also to nearest drlg. unit line, if any)

1980'

16. NO. OF ACRES IN LEASE

1000

17. NO. OF ACRES ASSIGNED
TO THIS WELL

40

18. DISTANCE FROM PROPOSED LOCATION*
TO NEAREST WELL, DRILLING, COMPLETED,
OR APPLIED FOR, ON THIS LEASE, FT.

1523'

19. PROPOSED DEPTH

7025

20. ROTARY OR CABLE TOOLS

Rotary

21. ELEVATIONS (Show whether DF, RT, GR, etc.)

3145.4' GR

22. APPROX. DATE WORK WILL START*

May 1, 1988

23. PROPOSED CASING AND CEMENTING PROGRAM

SIZE OF HOLE	SIZE OF CASING	WEIGHT PER FOOT	SETTING DEPTH	QUANTITY OF CEMENT
17 1/2	13 3/8	54.50	900	800 sx circulate
12 1/4	8 5/8	24-32	3550	950 sx CIRCULATE
7 7/8	5 1/2	17	7060	850 sx

Exhibits Attached:

- A. Drilling Fluid Program
- B. BOP Program
- C. Drilling Equipment Inventory
- D. Multi-point Surface Use and Operational Plan
- E. Ten Point Compliance Program
- F. Acreage Dedication Plat
- G. Location Plat
- H. Topographical Map
- I. Archeological Survey Report

Post 10-1
NL & API
5-6-88

IN ABOVE SPACE DESCRIBE PROPOSED PROGRAM: If proposal is to deepen or plug back, give data on present productive zone and proposed new productive zone. If proposal is to drill or deepen directionally, give pertinent data on subsurface locations and measured and true vertical depths. Give blowout preventer program, if any.

24.

SIGNED

Mike Butts

TITLE

Agent

DATE

3/28/88

(This space for Federal or State office use)

PERMIT NO.

APPROVAL DATE

APPROVED BY

TITLE

DATE

4-29-88

CONDITIONS OF APPROVAL, IF ANY:

*See Instructions On Reverse Side

EXHIBIT "F"
NL MEXICO OIL CONSERVATION COMMISS.
WELL LOCATION AND ACREAGE DEDICATION PLAT

Form C-102
Supersedes C-128
Effective 1-1-65

All distances must be from the outer boundaries of the Section.

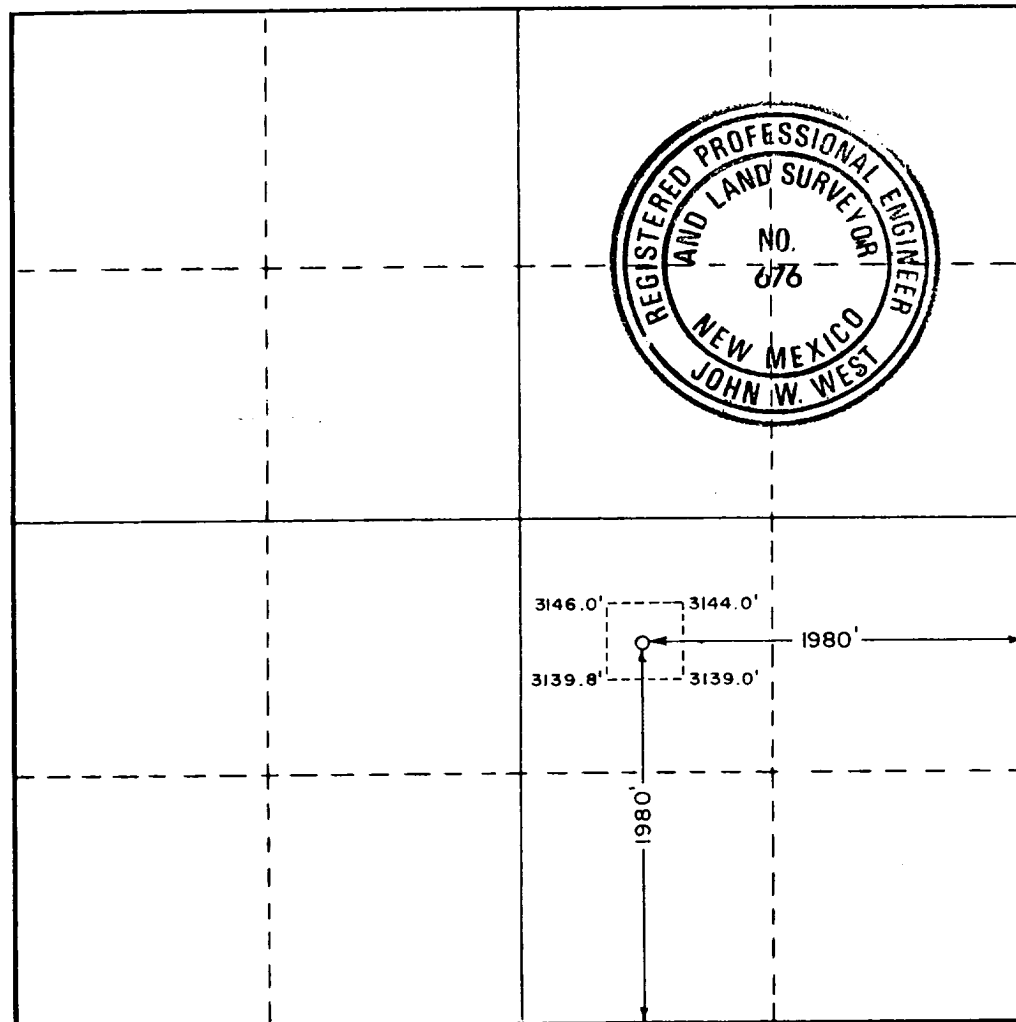
Operator CORINNE B. GRACE		Lease YVONNE FEDERAL		Well No. 1
Unit Letter J	Section 24	Township 26 SOUTH	Range 30 EAST	County EDDY
Actual Footage Location of Well: 1980 feet from the SOUTH line and 1980 feet from the EAST line				
Ground Level Elev. 3145.4	Producing Formation <i>Delaware</i>	Pool <i>Yvonne Federal</i>	Dedicated Acreage: 40 Acres	

1. Outline the acreage dedicated to the subject well by colored pencil or hachure marks on the plat below.
2. If more than one lease is dedicated to the well, outline each and identify the ownership thereof (both as to working interest and royalty).
3. If more than one lease of different ownership is dedicated to the well, have the interests of all owners been consolidated by communitization, unitization, force-pooling, etc?

☐ Yes ☐ No If answer is "yes," type of consolidation _____

If answer is "no," list the owners and tract descriptions which have actually been consolidated. (Use reverse side of this form if necessary.) _____

No allowable will be assigned to the well until all interests have been consolidated (by communitization, unitization, forced-pooling, or otherwise) or until a non-standard unit, eliminating such interests, has been approved by the Commission.



CERTIFICATION

I hereby certify that the information contained herein is true and complete to the best of my knowledge and belief.

Mike Butts

Name

Mike Butts

Position

Agent

Company

Corinne B. Grace

Date

February 1, 1988

I hereby certify that the well location shown on this plat was plotted from field notes of actual surveys made by me or under my supervision, and that the same is true and correct to the best of my knowledge and belief.

Date Surveyed

January 27, 1988

Registered Professional Engineer
and/or Land Surveyor

John W. West

Certificate No. **JOHN W. WEST, 676**

RONALD J. EIDSON, 3239

BOP 5000 PSI

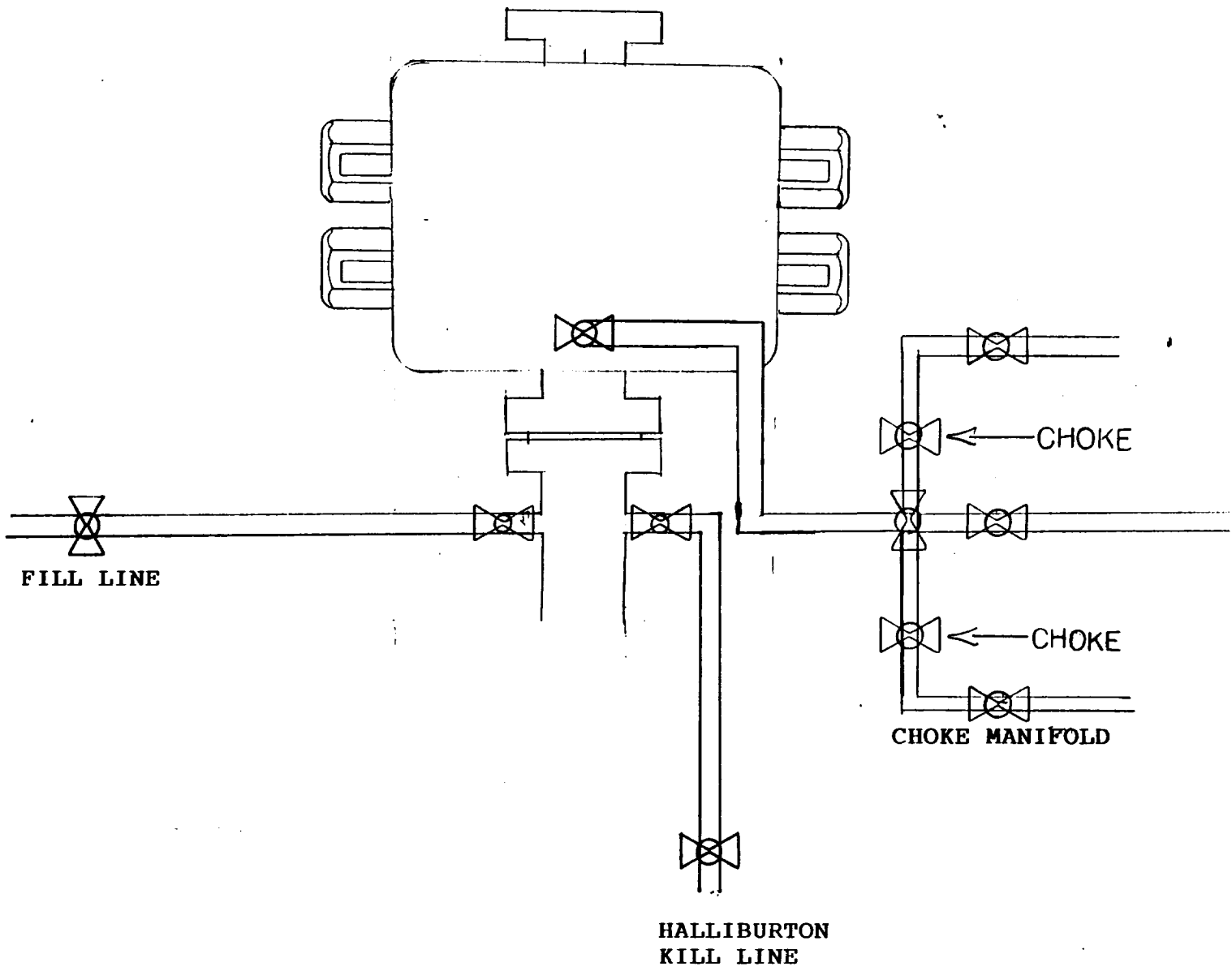


EXHIBIT "E"

Application for Drilling Permit

CORINNE GRACE
Ginger Federal #1
1980' FEL, 1980' FSL, Section 24
T26S, R30E, NMPM Eddy County, NM

In conjunction with Form 3160-3, Application for Permit to Drill subject well, Corinne Grace submits the following ten items of pertinent information in accordance with U.S. Bureau of Land Management requirements.

I. Geological Surface Information:

The geological surface formation is Tertiary-Sand, Red Shale, Caliche.

II. Estimated Tops of Important Geological Markers:

A. Rustler:	1150
B. Salado:	1550
C. Castile:	2870
D. Delaware LS:	3660
E. Bell Canyon:	3711
F. Cherry Canyon:	4736
G. Williamson SS:	5796
H. Brushy Canyon:	6078

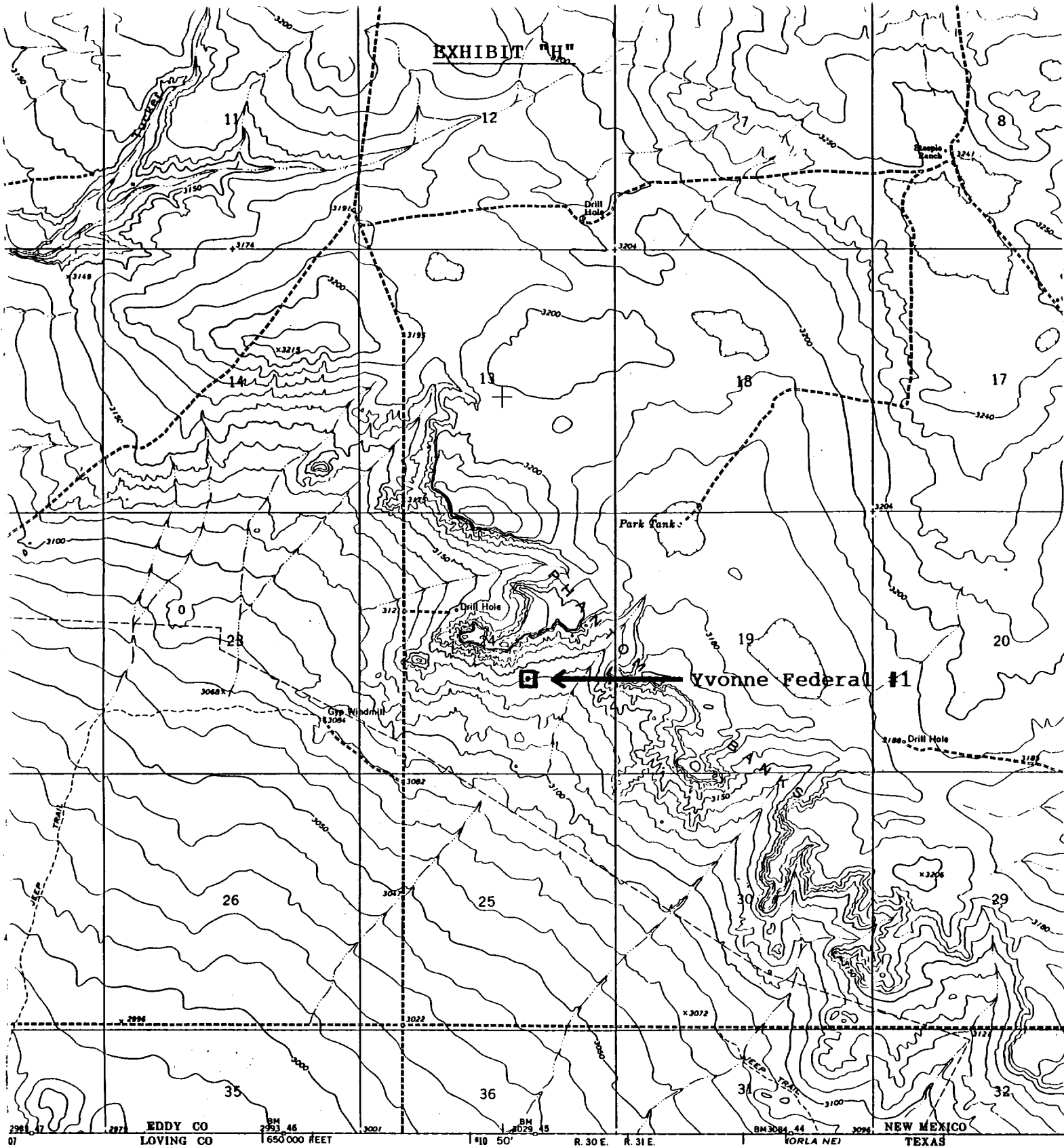
III. Estimated Depths of Anticipated Water, Oil, Gas or Minerals:

Fresh Water:	150'-250'
Oil or Gas:	Delaware Formation: 5800'

IV. Proposed Casing Program:

<u>Hole Size</u>	<u>Interval</u>	<u>Section Length</u>	<u>Size (OD)</u>	<u>Weight & Joint</u>	<u>Grade</u>	<u>New or Used</u>
17 1/2	0-900'	900'	13 3/8	54.50# J-55	ST&C	New
12 1/4	900'-3550'	3550'	8 5/8	32-24# J-55	ST&C	New
7 7/8	3550'-7060'	7060'	5 1/2	15.50#	ST&C	New

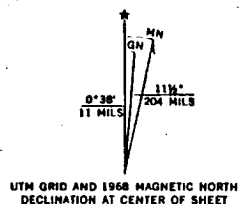
- V. Pressure Control Equipment: See Exhibit B
- VI. Drilling Fluids Program: See Exhibit A
- VII. Auxillary Equipment Program: See Exhibit C
- VIII. Testing, Logging and Coring Program:
 - Drill Stem Test: Delaware (if justified)
 - Log: Correlation log from PBDT to approximately 3700'.
- IX. Pressures or Temperatures Anticipated:
 - No abnormal pressures or temperatures are anticipated.
- X. Anticipated Starting Date: 1 May, 1988



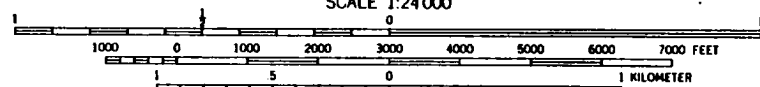
published by the Geological Survey
SC&GS

metric methods from aerial
7. Field checked 1968
1927 North American Datum
on New Mexico coordinate system,
transverse Mercator grid ticks,

indicate selected fence lines
North American Datum 1983
10 meters south and
by dashed corner ticks



UTM GRID AND 1968 MAGNETIC NORTH
DECLINATION AT CENTER OF SHEET



CONTOUR INTERVAL 10 FEET
NATIONAL GEODETIC VERTICAL DATUM OF 1929

THIS MAP COMPLIES WITH NATIONAL MAP ACCURACY STANDARDS
FOR SALE BY U. S. GEOLOGICAL SURVEY, DENVER, COLORADO 80225, OR RESTON, VIRGINIA 2209
A FOLDER DESCRIBING TOPOGRAPHIC MAPS AND SYMBOLS IS AVAILABLE ON REQUEST

EXHIBIT "G"

