

UNITED STATES  
DEPARTMENT OF THE INTERIOR  
BUREAU OF LAND MANAGEMENT

SUBMIT IN DUPLICATE  
(Other Inst. on reverse side)

Form approved.  
Budget Bureau No. 1004-0136  
Expires August 31, 1985

DEC 23 '88

30-015-26046  
5. LEASE DESIGNATION AND SERIAL NO.

APPLICATION FOR PERMIT TO DRILL, DEEPEN, OR PLUG BACK

1a. TYPE OF WORK:

DRILL ☒

DEEPEN ☐

PLUG BACK ☐

b. TYPE OF WELL:

OIL WELL ☒

GAS WELL ☐

OTHER

SINGLE ZONE ☐

MULTIPLE ZONE ☐

2. NAME OF OPERATOR

J.C. Williamson

3. ADDRESS OF OPERATOR

P.O. Box 16

Midland, Texas 79702

4. LOCATION OF WELL (Report location clearly and in accordance with any State requirements.)\*

At surface

330' FNL & 990' FEY

At proposed prod. zone

same

14. DISTANCE IN MILES AND DIRECTION FROM NEAREST TOWN OR POST OFFICE\*

20 miles Southeast of Malaga, New Mexico

10. DISTANCE FROM PROPOSED\*

LOCATION TO NEAREST  
PROPERTY OR LEASE LINE, FT.  
(Also to nearest drlg. unit line, if any)

330'

16. NO. OF ACRES IN LEASE

384

17. NO. OF ACRES ASSIGNED  
TO THIS WELL

40

18. DISTANCE FROM PROPOSED LOCATION\*  
TO NEAREST WELL, DRILLING, COMPLETED,  
OR APPLIED FOR, ON THIS LEASE, FT.

330'

19. PROPOSED DEPTH

6200'

20. ROTARY OR CABLE TOOLS

Rotary

21. ELEVATIONS (Show whether DF, RT, GR, etc.)

2784.1' GR

22. APPROX. DATE WORK WILL START\*

October 15, 1988

23.

PROPOSED CASING AND CEMENTING PROGRAM

SIZE OF HOLE	SIZE OF CASING	WEIGHT PER FOOT	SETTING DEPTH	QUANTITY OF CEMENT
17-1/2"	12-3/4"	45#	550'	550 sx to circulate
11"	8-5/8"	24# & 32#	3350'	500 sx tie back to base sur. csg.
7-7/8"	5-1/2"	15.5#	6200'	1000 sx in 2 stages to tie back to the 8-5/8" csg.

IN ABOVE SPACE DESCRIBE PROPOSED PROGRAM: If proposal is to deepen or plug back, give data on present productive zone and proposed new productive zone. If proposal is to drill or deepen directionally, give pertinent data on subsurface locations and measured and true vertical depths. Give blowout preventer program, if any.

24.

SIGNED

*[Signature]*

TITLE

Agent

DATE

09-20-88

(This space for Federal or State office use)

PERMIT NO.

APPROVAL DATE

APPROVED BY

*[Signature]*

TITLE

DATE

12-19-88

CONDITIONS OF APPROVAL, IF ANY:

\*See Instructions On Reverse Side



NE EXICO OIL CONSERVATION COMMISSION  
WELL LOCATION AND ACREAGE DEDICATION PLAT

Form C-102  
Supersedes C-128  
Effective 1-1-65

All distances must be from the outer boundaries of the Section

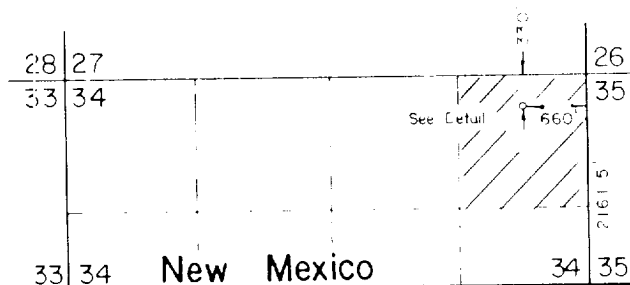
Operator J.C. Williamson		Lease Ross Draw		Well No. 16
Tract Letter A	Section 34	Township 26 South	Range 30 East	County Eddy
Actual Footage Location of Well:				
660	feet from the	East	line and	330 feet from the North line
Ground Level Elev. 2984.1	Producing Formation Delaware		Pool Undesignated Delaware	Dedicated Acreage: 40 Acres

1. Outline the acreage dedicated to the subject well by colored pencil or hachure marks on the plat below.
2. If more than one lease is dedicated to the well, outline each and identify the ownership thereof (both as to working interest and royalty).  
N/A
3. If more than one lease of different ownership is dedicated to the well, have the interests of all owners been consolidated by communitization, unitization, force-pooling, etc?

☐ Yes ☐ No If answer is "yes," type of consolidation N/A

If answer is "no," list the owners and tract descriptions which have actually been consolidated. (Use reverse side of this form if necessary.)

No allowable will be assigned to the well until all interests have been consolidated (by communitization, unitization, forced-pooling, or otherwise) or until a non-standard unit, eliminating such interests, has been approved by the Commission.



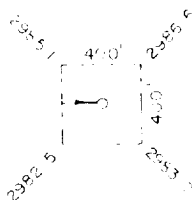
33 34 New Mexico

Texas

Scale 1" = 2000'



Proposed Location



Detail Scale 1" = 1000'  
Proposed Well Pad

CERTIFICATION

I hereby certify that the information contained herein is true and complete to the best of my knowledge and belief.

Signature  
Jan Pfister

Position  
Agent

Company  
J.C. Williamson

Date  
09-26-88

I hereby certify that the well location shown on this plat was plotted from field notes of actual surveys made by me or under my supervision, and that the same is true and correct to the best of my knowledge and belief.

Date Surveyed  
September 21, 1988

Registered Professional Engineer and/or Land Surveyor

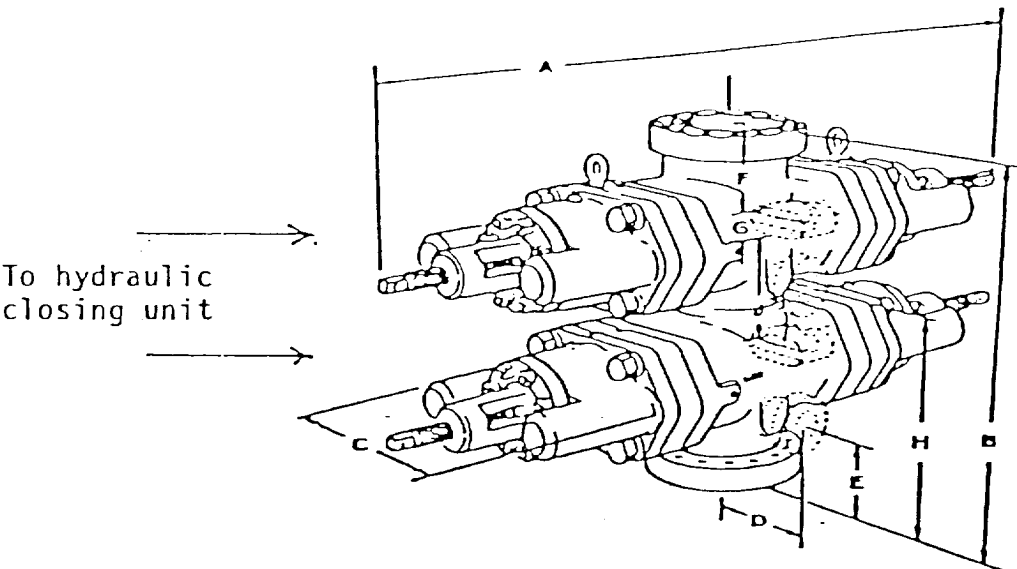
Signature  
Certificate No. JOHN W. WEST 676

Ronald J. Eidson 3239

# EXHIBIT "E"

## BOP Diagram

After 8-5/8" intermediate casing has been set and cement placed around bottom of this pipe, the 13-3/8" casing will be orange peeled into the 8-5/8" casing and then an 11" double ram BOP, as shown below will be put on the hole. This blowout preventer will be connected to a hydraulically controlled closing unit. The pressure rating on this BOP is 3000#, and will have blank and 5-1/2" pipe.



J.C. WILLIAMSON  
ROSS DRAW UNIT #16  
Sec. 34-26-30  
EDDY COUNTY, NEW MEXICO

## SUPPLEMENTAL DRILLING DATA

J.C. WILLIAMSON  
WELL ROSS DRAW #16

1. SURFACE FORMATION: Quaternary Alluvium

2. ESTIMATED TOPS OF GEOLOGIC MARKERS:

Rustler Anhydrite	500'
Lamar Shale	3350'
Ramsey Sand	3400'
Olds Sand	3500'
Top Cherry Canyon	4450'
Top Brushy Canyon	5500'

3. ANTICIPATED POSSIBLE WATER AND HYDROCARBON BEARING ZONES:

Fresh Water	above	200'
Bell Canyon Delaware (oil)	3500' -	3700'
Cherry Canyon Delaware (oil)	4450' -	5500'
Brushy Canyon Delaware (oil)	5500' -	6200'

4. PROPOSED CASING AND CEMENTING PROGRAM:

Casing program is shown on Form 9-331 C.

Hole for surface casing will be drilled to a depth below fresh water zones. 12-3/4" surface casing will be run to 550 feet, below all fresh water zones and will be cemented to the surface with 550 sacks of Class "C" cement, which is sufficient to circulate cement on this pipe.

8-5/8" casing will be run and cemented at 3350 feet, prior to entering Delaware section and will be cemented with 500 sacks of Class "C" cement at 3350 feet, tying same back into the base of the surface casing.

5-1/2" casing will be run to total depth and will be cemented at a total depth if significant shows are encountered in the Brushy Canyon formation. The second stage of the cement procedure should tie the 5 1/2" casing back into the 8-5/8" intermediate, which is well above all productive zones.

5. PRESSURE CONTROL EQUIPMENT:

Pressure control equipment will consist of a 3000# double ram hydraulically controlled blow out preventer and a 3000# choke manifold.

6. CIRCULATING MEDIUM:

The circulating medium will be fresh water down to 550 feet and brine water in the rest of the hole, once the water saturates itself naturally with salt.

7. AUXILARY EQUIPMENT:

Not Applicable.

8. TESTING, LOGGING AND CORING PROGRAM:

Formation testing will be made by conventional drill stem test; however none are anticipated.

It is planned that a compensated neutron-density gamma ray and gamma ray dual laterolog will be run when total depth is reached, with a backup computer analysis utilizing these logs.

No coring is planned.

9. ABNORMAL PRESSURES, TEMPERATURES OR HYDROGEN SULFIDE GAS:

None anticipated.

10. ANTICIPATED STARTING DATE:

It is planned that operations will commence on October 15, 1988, or as soon as the application is approved.

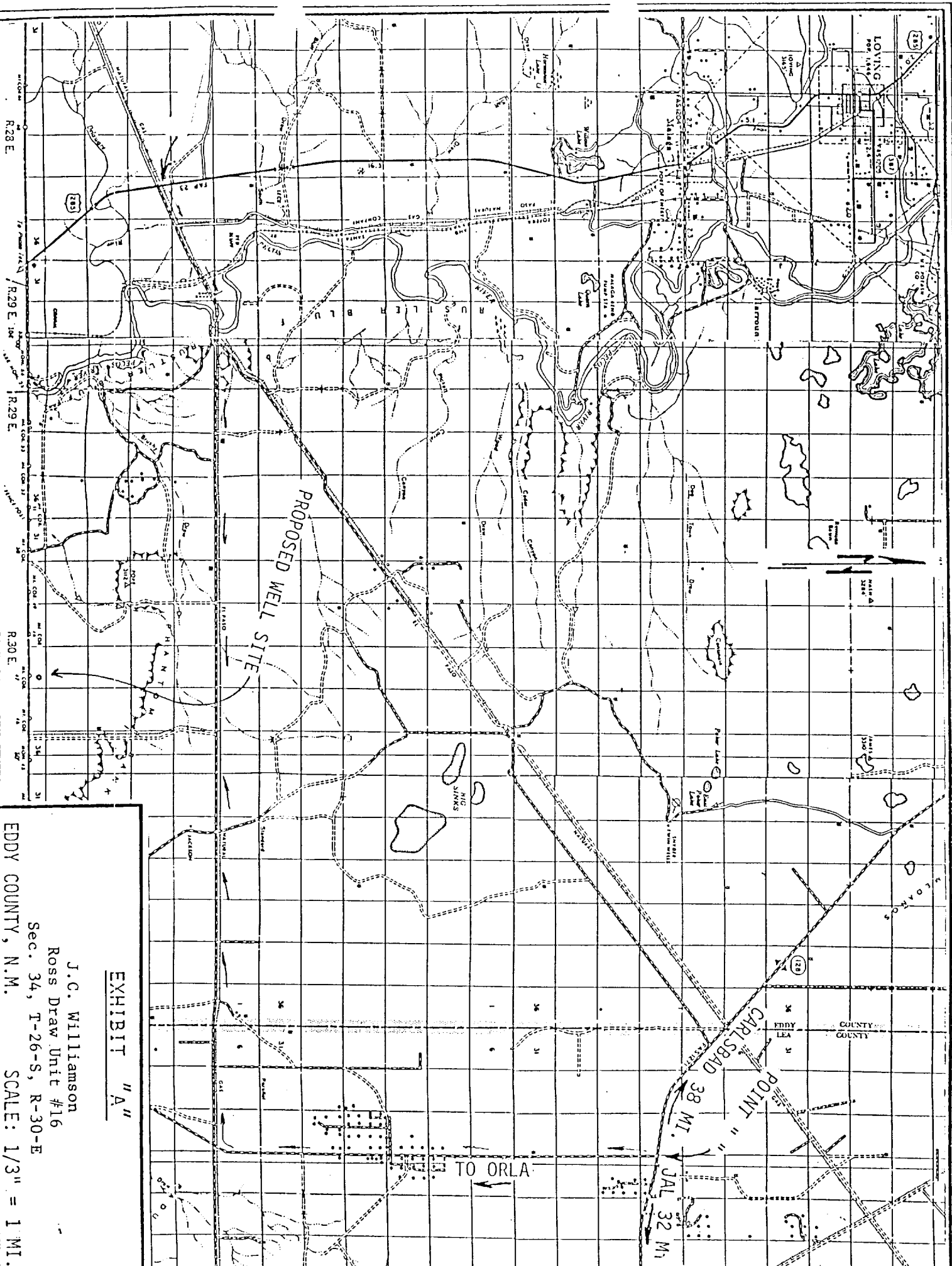


EXHIBIT "A"

J.C. Williamson  
Ross Draw Unit #16  
Sec. 34, T-26-S, R-30-E  
EDDY COUNTY, N.M.  
SCALE: 1/3" = 1 MI.

