

Submit to Appropriate
District Office
State Lease - 4 copies
Fee Lease - 3 copies

State of New Mexico
Energy, Minerals and Natural Resources Department

Form C-102
Revised 1-1-89

OIL CONSERVATION DIVISION

P.O. Box 2088
Santa Fe, New Mexico 87504-2088

DISTRICT I
P.O. Box 1980, Hobbs, NM 88240

DISTRICT II
P.O. Drawer DD, Artesia, NM 88210

DISTRICT III
1000 Rio Brazos Rd., Aztec, NM 87410

WELL LOCATION AND ACREAGE DEDICATION PLAT

All Distances must be from the outer boundaries of the section

Operator BETTIS BOYLE & STOVALL			Lease Lotus "B"		Well No. 1
Unit Letter K	Section 10	Township 24 South	Range 31 East	County eddy	
Actual Footage Location of Well: 1980 feet from the South line and 1980 feet from the West line					
Ground level Elev. 3457.2	Producing Formation MORROW		Pool UNDES. SO. SAND DUNES LOWER PENN	Dedicated Acreage: 320 Acres	

1. Outline the acreage dedicated to the subject well by colored pencil or hatchure marks on the plat below.

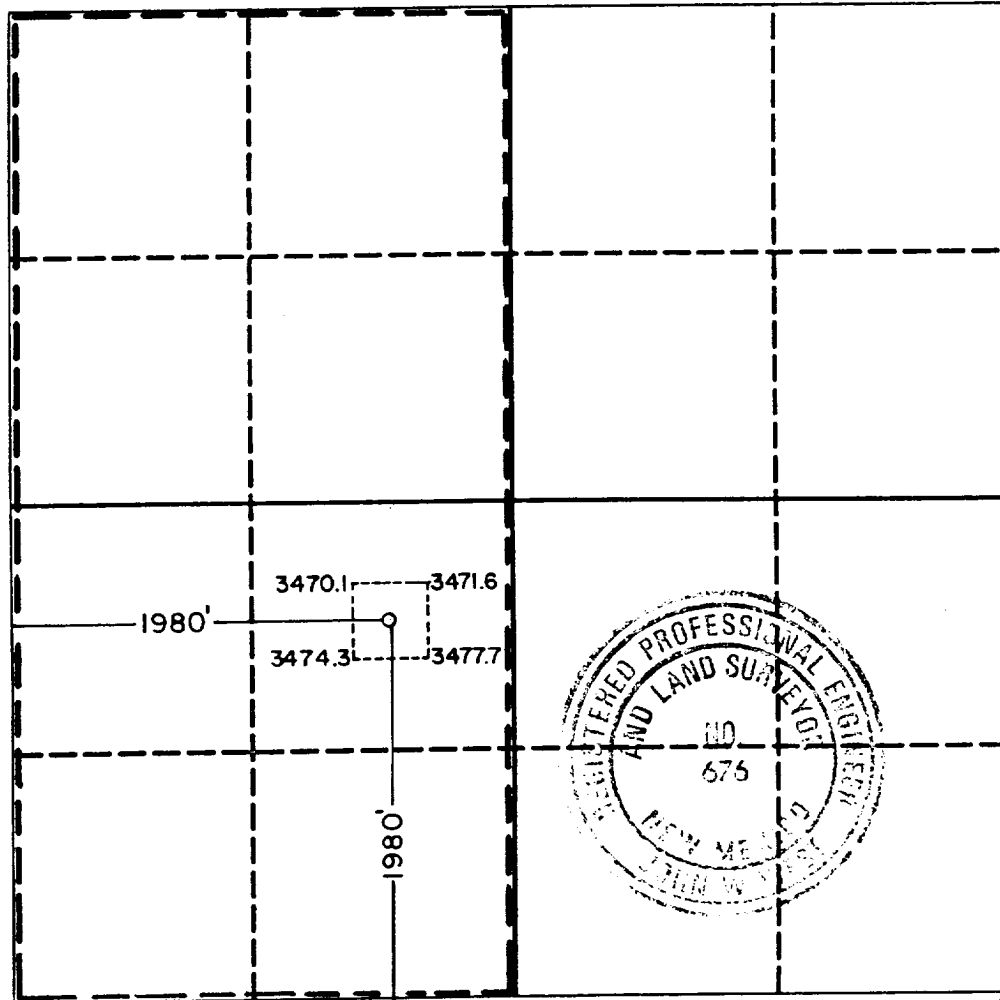
2. If more than one lease is dedicated to the well, outline each and identify the ownership thereof (both as to working interest and royalty).

3. If more than one lease of different ownership is dedicated to the well, have the interest of all owners been consolidated by communitization, unitization, force-pooling, etc.?

☐ Yes ☐ No If answer is "yes" type of consolidation _____

If answer is "no" list the owners and tract descriptions which have actually been consolidated. (Use reverse side of this form if necessary.) _____

No allowable will be assigned to the well until all interests have been consolidated (by communitization, unitization, forced-pooling, or otherwise) or until a non-standard unit, eliminating such interest, has been approved by the Division.



OPERATOR CERTIFICATION

I hereby certify that the information contained herein is true and complete to the best of my knowledge and belief.

Signature

Printed Name

Arthur R. Brown

Position

Agent

Company

BETTIS, BOYLE & STOVALL

Date

MAY 18, 1990

SURVEYOR CERTIFICATION

I hereby certify that the well location shown on this plat was plotted from field notes of actual surveys made by me or under my supervision, and that the same is true and correct to the best of my knowledge and belief.

Date Surveyed

May 6, 1990

Signature & Seal of
Professional Surveyor

Certificate No.

JOHN W. WEST

676

RONALD J. EIDSON,

3239

UNITED STATES
DEPARTMENT OF THE INTERIOR
BUREAU OF LAND MANAGEMENT

APPLICATION FOR PERMIT TO DRILL, DEEPEN, OR PLUG BACK

1a. TYPE OF WORK

DRILL ☒

DEEPEN ☐

PLUG BACK ☐

b. TYPE OF WELL

OIL
WELL ☒

GAS
WELL ☒

OTHER

SINGLE
ZONE

☒ RECEIVED
MULTIPLE
ZONE ☐

2. NAME OF OPERATOR

BETTIS, BOYLE & STOVALL

3. ADDRESS OF OPERATOR

P. O. BOX 1240, GRAHAM, TEXAS 76046

4. LOCATION OF WELL (Report location clearly and in accordance with any State requirements.)

At surface

1980' FSL AND 1980' FWL OF SECTION 10

At proposed prod. zone

14. DISTANCE IN MILES AND DIRECTION FROM NEAREST TOWN OR POST OFFICE*

20 AIR MILES EAST OF LOVING, NEW MEXICO

15. DISTANCE FROM PROPOSED*

LOCATION TO NEAREST
PROPERTY OR LEASE LINE, FT.
(Also to nearest drlg. unit line, if any)

660'

16. NO. OF ACRES IN LEASE

320

17. NO. OF ACRES ASSIGNED
TO THIS WELL

320

18. DISTANCE FROM PROPOSED LOCATION*

TO NEAREST WELL, DRILLING, COMPLETED,
OR APPLIED FOR, ON THIS LEASE, FT.

-

19. PROPOSED DEPTH

15,300'

20. ROTARY OR CABLE TOOLS

ROTARY

21. ELEVATIONS (Show whether DF, RT, GR, etc.)

3457.2 GL

22. APPROX. DATE WORK WILL START*

UPON APPROVAL

23. PROPOSED CASING AND CEMENTING PROGRAM

SIZE OF HOLE	SIZE OF CASING	WEIGHT PER FOOT	SETTING DEPTH	QUANTITY OF CEMENT
26"	20"	94#	675'	SUFFICIENT TO CIRCULATE
17-1/2"	13-3/8"	54.5, 61 & 68#	4400'	SUFFICIENT TO CIRCULATE
12-1/4"	9-5/8"	40, 43.5 & 47#	11,750'	1000 SACKS
8-1/2"	7-5/8" Liner	39#	11,550-14,770'	520 SACKS
6-1/2"	5-1/2" Liner	23#	14,600-15,300'	150 SACKS

AFTER SETTING PRODUCTION CASING, PAY ZONE WILL BE PERFORATED AND
STIMULATED AS NECESSARY.

SEE ATTACHED FOR: SUPPLEMENTAL DRILLING DATA
BOP SKETCHES
SURFACE USE AND OPERATIONS PLAN

APPROVAL SUBJECT TO
GENERAL REQUIREMENTS AND
SPECIAL STIPULATIONS
ATTACHED

IN ABOVE SPACE DESCRIBE PROPOSED PROGRAM: If proposal is to deepen or plug back, give data on present productive zone and proposed new productive zone. If proposal is to drill or deepen directionally, give pertinent data on subsurface locations and measured and true vertical depths. Give blowout preventer program, if any.

24.

SIGNED

Arthur R. Brown

TITLE

Agent

DATE

May 21, 1990

(This space for Federal or State office use)

PERMIT NO.

APPROVAL DATE

APPROVED BY

TITLE

DATE

CONDITIONS OF APPROVAL, IF ANY:

*See Instructions On Reverse Side

SUPPLEMENTAL DRILLING DATA

BETTIS, BOYLE & STOVALL WELL NO.1 LOTOS "B" FEDERAL

1. SURFACE FORMATION: Quaternary.

2. ESTIMATED TOPS OF GEOLOGIC MARKERS:

Rustler	670'	3rd B.S. Sand	11,050'
Salado	900'	Wolfcamp	11,510'
Delaware	4400'	Strawn	13,520'
Cherry Canyon	5200'	Atoka	13,710'
Brushy Canyon	7180'	Morrow	14,190'
Bone Spring	8210'	Middle Morrow	14,790'
1st B.S. Sand	8750'	Lower Morrow	15,230'
2nd B.S. Sand	9860'		

3. ANTICIPATED POSSIBLE HYDROCARBON BEARING ZONES:

Morrow Gas

4. PROPOSED CASING AND CEMENTING PROGRAM:

CASING SIZE	SETTING DEPTH		WEIGHT	GRADE	JOINT
	FROM	TO			
20"	0	675'	94#	J-55	BUTT
13-3/8"	0	1900'	54.5#	K-55	STC
"	1900'	3500'	61#	S-80	STC
"	3500'	4400'	68#	S-80	STC
9-5/8"	0	2100'	40#	N-80	BUTT
"	2100'	4000'	40#	N-80	LTC
"	4000'	6200'	40#	S-80	STC
"	6200'	9700'	43.5#	S-95	LTC
"	9700'	11,750'	47#	S-95	LTC
7-5/8" Liner	11,550'	14,770'	39#	P-110	LTC
5-1/2" Liner	14,600'	15,300'	23#	P-110	LTC

20" casing will be cemented with approximately 725 sacks of Class "C" Light w/ 2% CaCl followed by 500 sacks of Class "C" with 2% CaCl.

13-3/8" casing will be cemented with approximately 3100 sacks of Class "C" Light followed by 500 sacks of Class "C".

9-5/8" casing will be cemented with approximately 1000 sacks of 50/50 POZMIX.

7-5/8" liner will be cemented with 520 sacks of Class "H".

5-1/2" liner will be cemented with 150 sacks of Class "H".

Equivalent or better grades and weights of casing may be substituted at time casing is run, depending on availability.

5. PRESSURE CONTROL EQUIPMENT:

Blowout prevention equipment while drilling the 17-1/2" hole will be either a 2000 psi working pressure double ram type preventer or a 2000 psi working pressure annular type preventer.

BOP sketches are attached showing equipment to be in use while drilling below the 13-3/8" casing seat.

6. CIRCULATING MEDIUM:

Surface to 675 feet: Fresh water.

675 feet to 4400 feet: Brine.

4400 feet to total depth: Water base drilling fluid conditioned as necessary for control of viscosity, pH, seepage and water-loss. Weighted as necessary for well control.

7. AUXILIARY EQUIPMENT:

Mud logging trailer to be in use while drilling below the intermediate casing.

Geolograph from surface to total depth.

8. TESTING, LOGGING, AND CORING PROGRAMS:

Drill stem tests will be made when samples, drilling time, and other data indicate a test is warranted.

It is planned that electric logs will include GR-CNL-LDT and GR-DLL.

No coring is planned.