

**OIL CONSERVATION DIVISION**

P.O. Box 2088  
Santa Fe, New Mexico 87504-2088

**DISTRICT I**  
P.O. Box 1990, Hobbs, NM 88240

**DISTRICT II**  
P.O. Drawer DD, Artesia, NM 88210

**DISTRICT III**  
1000 Rio Brazos Rd., Aztec, NM 87410

**WELL LOCATION AND ACREAGE DEDICATION PLAT**

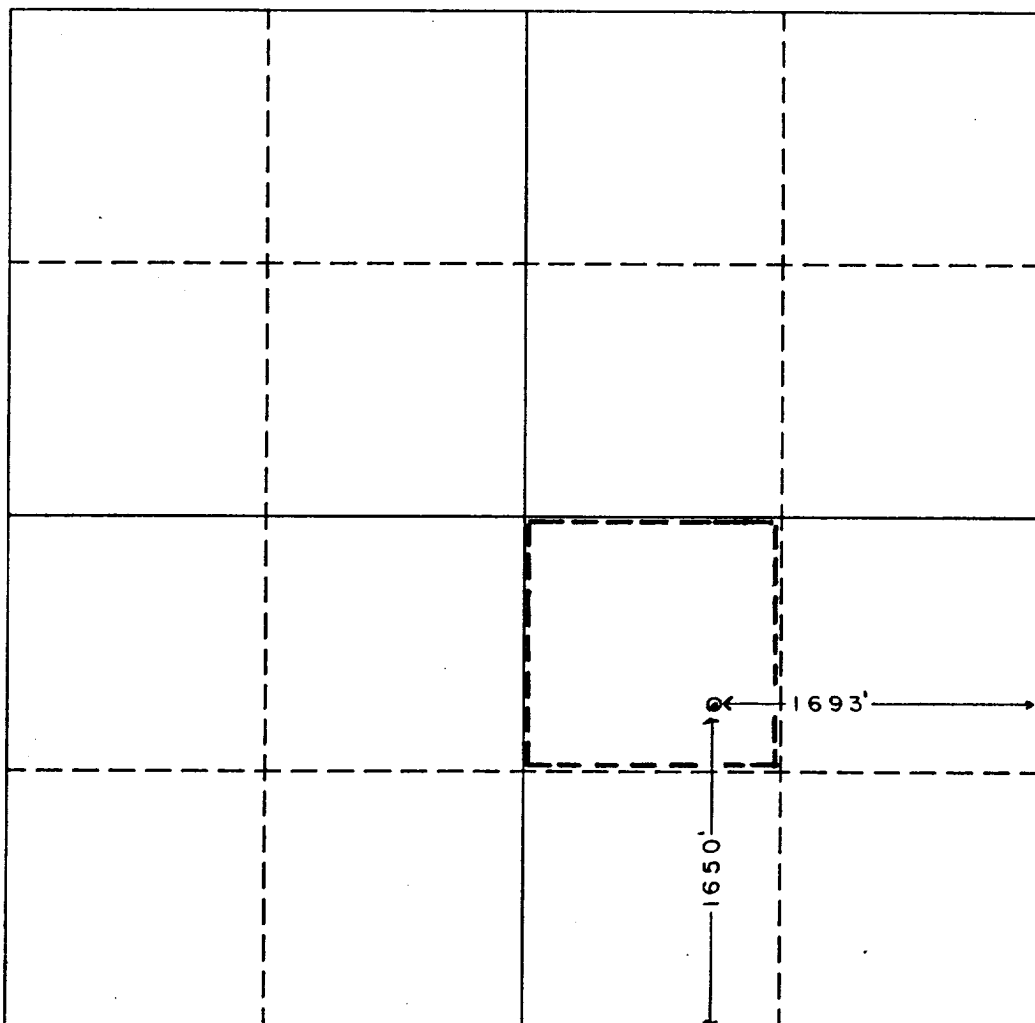
All Distances must be from the outer boundaries of the section

Operator Pogo Producing Company			Lease DiMaggio		Well No. 1
Unit Letter J	Section 16	Township 26 South	Range 29 East	NMPM	County Eddy
Actual Footage Location of Well: 1650 feet from the South line and 1693 feet from the East line					
Ground Level Elev. 2918.7	Producing Formation DELAWARE	Pool UNDES. BRUSHY DRAW DELAWARE		Dedicated Acreage: 40 Acres	

1. Outline the acreage dedicated to the subject well by colored pencil or hatchure marks on the plat below.
2. If more than one lease is dedicated to the well, outline each and identify the ownership thereof (both as to working interest and royalty).
3. If more than one lease of different ownership is dedicated to the well, have the interest of all owners been consolidated by communization, unitization, force-pooling, etc.?  
☐ Yes ☐ No If answer is "yes" type of consolidation \_\_\_\_\_

If answer is "no" list of owners and tract descriptions which have actually been consolidated. (Use reverse side of this form necessary.)

No allowable will be assigned to the well unit all interests have been consolidated (by communization, unitization, forced-pooling, otherwise) or until a non-standard unit, eliminating such interest, has been approved by the Division.



**OPERATOR CERTIFICATION**

I hereby certify the the information contained herein is true and complete to the best of my knowledge and belief.

Signature  
*Richard L. Wright*  
Printed Name  
Richard L. Wright  
Position  
Dist. Drlg. & Prod. Supt.  
Company  
POGO PRODUCING COMPANY  
Date  
January 27, 1992

**SURVEYOR CERTIFICATION**

I hereby certify that the well location shown on this plat was plotted from field notes of actual surveys made by me or under my supervision, and that the same is true and correct to the best of my knowledge and belief.

Date Surveyed  
January 25, 1992  
Signature & Seal of  
Professional Surveyor  
*Ronald L. Jones*  
REGISTERED LAND SURVEYOR  
No. 3239  
Certification No. 678  
W.O. 92-11-0116