

UNITED STATES
DEPARTMENT OF THE INTERIOR
BUREAU OF LAND MANAGEMENT
O. C. D.
APR 30 1992

APPLICATION FOR PERMIT TO DRILL, DEEPEN, OR PLUG BACK

A. TYPE OF WORK

DRILL ☒

DEEPEN ☐

PLUG BACK ☐

B. TYPE OF WELL

OIL
WELL ☒

GAS
WELL ☐

OTHER

SINGLE
ZONE ☒

MULTIPLE
ZONE ☐

1. NAME OF OPERATOR

POGO PRODUCING COMPANY ✓

2. ADDRESS OF OPERATOR

P. O. BOX 10340, MIDLAND, TEXAS 79702

4. LOCATION OF WELL (Report location clearly and in accordance with any State requirements.)

At surface

330' FSL AND 330' FEL OF SECTION 9

At proposed prod. zone

14. DISTANCE IN MILES AND DIRECTION FROM NEAREST TOWN OR POST OFFICE*

13 AIR MILES SOUTH-SOUTHEAST OF MALAGA, NEW MEXICO

15. DISTANCE FROM PROPOSED*

LOCATION TO NEAREST
PROPERTY OR LEASE LINE, FT.
(Also to nearest drig. unit line, if any)

330'

16. NO. OF ACRES IN LEASE

560

17. NO. OF ACRES ASSIGNED
TO THIS WELL

40

18. DISTANCE FROM PROPOSED LOCATION*
TO NEAREST WELL, DRILLING, COMPLETED,
OR APPLIED FOR, ON THIS LEASE, FT.

1320'

19. PROPOSED DEPTH

5500'

20. ROTARY OR CABLE TOOLS

ROTARY

21. ELEVATIONS (Show whether DF, RT, GR, etc.)

2947.8' GR

22. APPROX. DATE WORK WILL START*

UPON APPROVAL

PROPOSED CASING AND CEMENTING PROGRAM

SIZE OF HOLE	SIZE OF CASING	WEIGHT PER FOOT	SETTING DEPTH	QUANTITY OF CEMENT
11"	8-5/8"	24#	450'	SUFFICIENT TO CIRCULATE
7-7/8"	5-1/2"	15.5#	5500'	SUFFICIENT TO CIRCULATE

AFTER SETTING PRODUCTION CASING, PAY ZONE WILL BE PERFORATED
AND STIMULATED AS NECESSARY.

SEE ATTACHED FOR: SUPPLEMENTAL DRILLING DATA
BOP SKETCH
SURFACE USE AND OPERATIONS PLAN

Post ID-1
5-4-92

New loc & API



IN ABOVE SPACE DESCRIBE PROPOSED PROGRAM: If proposal is to deepen or plug back, give data on present productive zone and proposed new productive zone. If proposal is to drill or deepen directionally, give pertinent data on subsurface locations and measured and true vertical depths. Give blowout preventer program, if any.

SIGNED Richard I. Wright
(This space for Federal or State office use)

TITLE Drilling and Production Supt. DATE March 26, 1992

PERMIT NO. _____ APPROVAL DATE _____

APPROVED BY _____ TITLE _____ DATE 4/28/92

CONDITIONS OF APPROVAL, IF ANY:

*See Instructions On Reverse Side

OIL CONSERVATION DIVISION

P.O. Box 2088

Santa Fe, New Mexico 87504-2088

DISTRICT I

P.O. Box 1980, Hobbs, NM 88240

DISTRICT II

P.O. Drawer DD, Artesia, NM 88210

DISTRICT III

1000 Rio Brazos Rd., Artec, NM 87410

WELL LOCATION AND ACREAGE DEDICATION PLAT

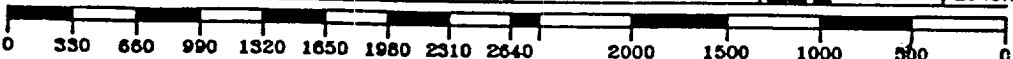
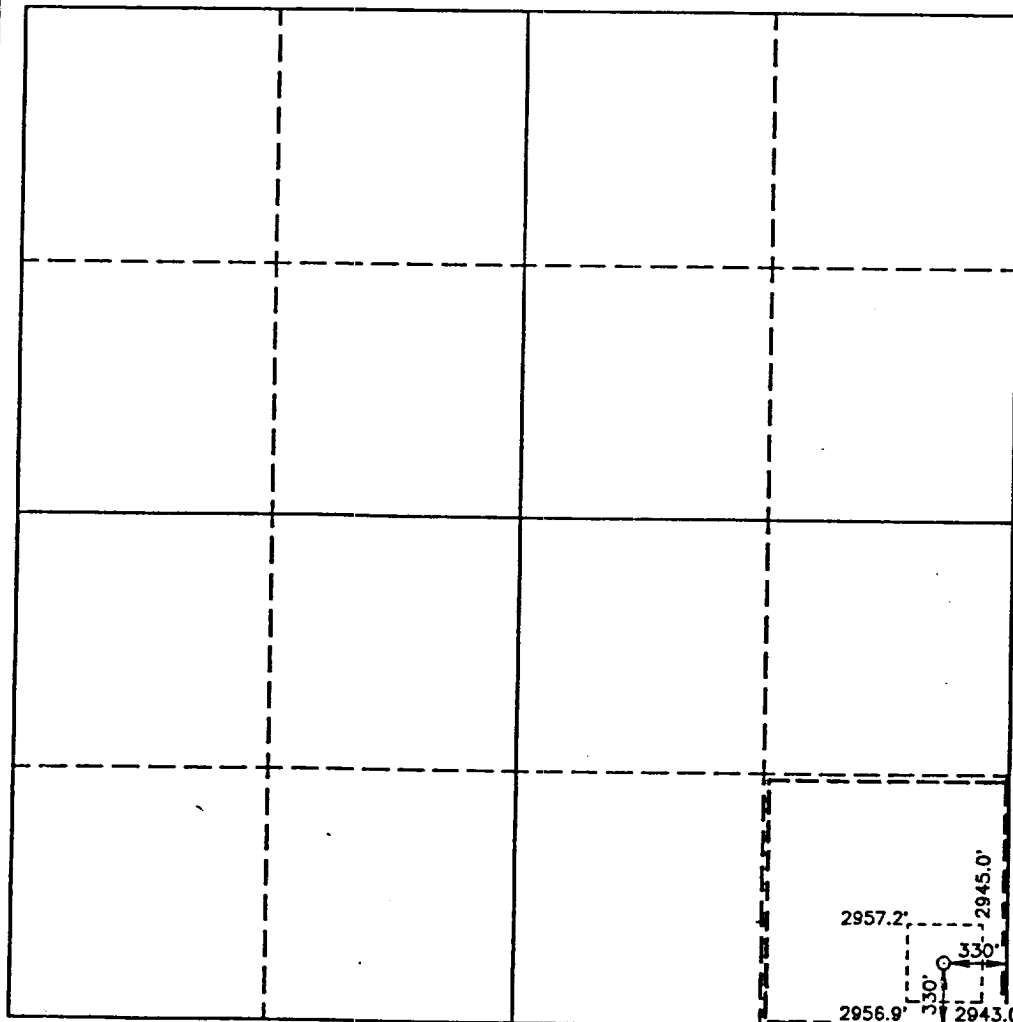
All Distances must be from the outer boundaries of the section

Operator POGO PRODUCING CO.			Lease GEHRIG FEDERAL		Well No. 2
Unit Letter P	Section 9	Township 26 SOUTH	Range 29 EAST	NMPM	County EDDY
Actual Footage Location of Well: 330 feet from the SOUTH line and 330 feet from the EAST line					
Ground Level Elev. 2947.8'	Producing Formation DELAWARE		Pool UNDES. BRUSHY DRAW DELAWARE		Dedicated Acreage: 40 Acres

1. Outline the acreage dedicated to the subject well by colored pencil or hatchure marks on the plat below.
2. If more than one lease is dedicated to the well, outline each and identify the ownership thereof (both as to working interest and royalty).
3. If more than one lease of different ownership is dedicated to the well, have the interest of all owners been consolidated by communitization, unitization, force-pooling, etc.?
☐ Yes ☐ No If answer is "yes" type of consolidation _____

If answer is "no" list of owners and tract descriptions which have actually been consolidated. (Use reverse side of this form necessary.)

No allowable will be assigned to the well unit all interests have been consolidated (by communitization, unitization, forced-pooling, otherwise) or until a non-standard unit, eliminating such interest, has been approved by the Division.



OPERATOR CERTIFICATION

I hereby certify the the information contained herein is true and complete to the best of my knowledge and belief.

Signature
Richard L. Wright
Printed Name
Richard L. Wright
Position
Dist. Drlg. & Prod. Supt.
Company
POGO PRODUCING COMPANY
Date
March 25, 1992

SURVEYOR CERTIFICATION

I hereby certify that the well location shown on this plat was plotted from field notes of actual surveys made by me or under my supervision, and that the same is true and correct to the best of my knowledge and belief.

Date Surveyed
MARCH 18, 1992
Signature
Professional Surveyor
No. 3239
Certified by J. EDSON W. WEST, 676
RONALD J. EDSON, 3239
GARY L. JONES, 7877

92-11-0390

SUPPLEMENTAL DRILLING DATA

POGO PRODUCING COMPANY

GEHRIG FEDERAL WELL NO.2

1. SURFACE FORMATION: Quaternary

2. ESTIMATED TOPS OF GEOLOGIC MARKERS:

Rustler Anhydrite	400'
Delaware Lime	2900'
Bell Canyon	3950'
Cherry Canyon	3800'

3. ANTICIPATED POSSIBLE HYDROCARBON BEARING ZONES:

Cherry Canyon	Oil
---------------	-----

4. PROPOSED CASING AND CEMENTING PROGRAM:

8-5/8" 24# K-55 ST&C casing is to be set at approximately 450 feet in 11" hole. Casing to be cemented with 200 sacks of Light cement tailed in with 200 sacks of Class "C" with 2% CaCl. Cement to circulate.

5-1/2" 15.5# K-55 ST&C casing is to be set at 5500 feet in 7-7/8" hole. Casing is to be cemented with 500 sacks of Light cement tailed in with 200 sacks of Class "C" cement. Cement to circulate.

5. PRESSURE CONTROL EQUIPMENT:

Blow out prevention equipment, while drilling below the 8-5/8" casing seat, will be a 3000 psi working pressure BOP stack. A BOP sketch is attached.

6. CIRCULATING MEDIUM:

Surface to 450 feet: Fresh water spud mud. Viscosity 30 to 36 as required for hole cleaning.

450 feet to T.D.: Water base drilling fluid conditioned as necessary for control of weight, viscosity, pH, and

water-loss. Weight 9 to 10. Viscosity 38 to 45.
pH 9 to 10. Filtrate while drilling pay zone 6 to 15.

7. AUXILIARY EQUIPMENT:

A mud logging trailer will be in use while drilling below a depth of about 2700 feet.

8. TESTING, LOGGING, AND CORING PROGRAMS:

Drill stem tests will be made if well data and other information indicate a test is warranted.

It is planned that electric logs will include GR-CNL-Density logs and GR-DLL logs.

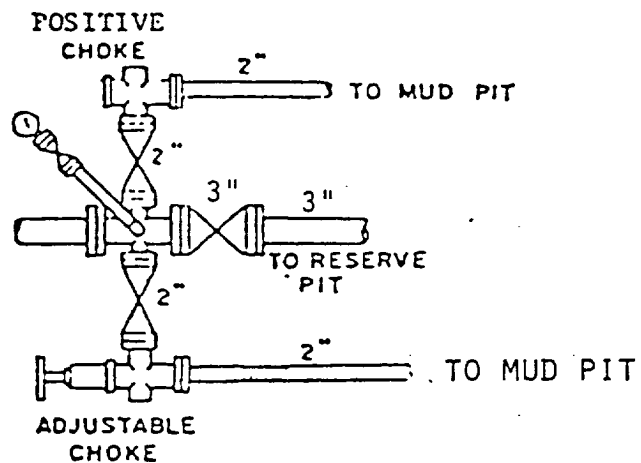
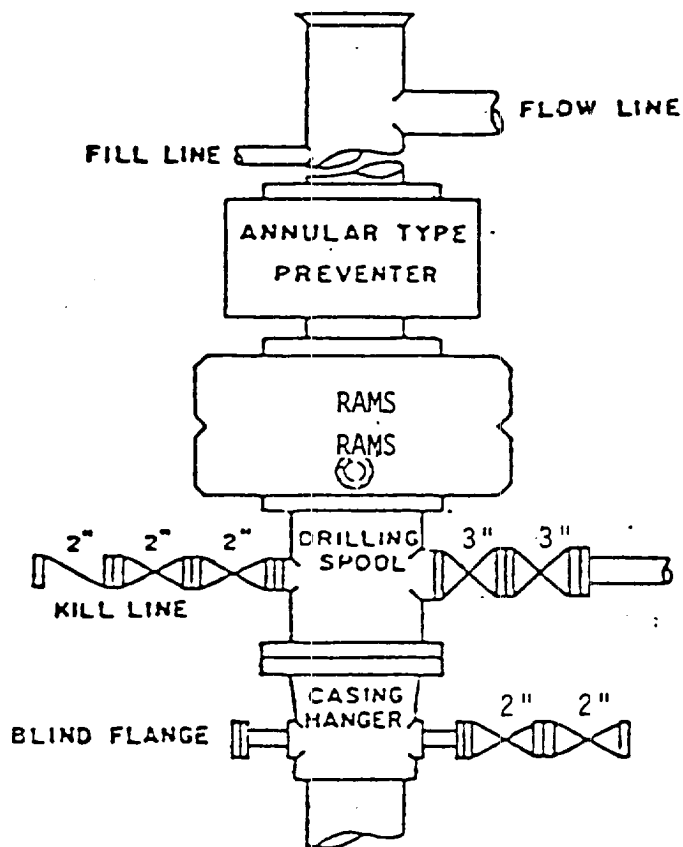
No coring is planned.

9. ABNORMAL PRESSURES, TEMPERATURES, OR HYDROGEN SULFIDE GAS:

None anticipated.

10. ANTICIPATED STARTING DATE:

It is planned that operations will commence upon approval of this application, with drilling and completion operations lasting about 30 days.



BOP STACK

3000 PSI WORKING PRESSURE

BOP ARRANGEMENT