

Submit to Appropriate
District Office
State Lease - 6 copies
Fee Lease - 5 copies

State of New Mexico
Energy, Minerals and Natural Resources Department

Form C-101
Revised 1-1-89

12/1
B. L. M.
5/1
op

OIL CONSERVATION DIVISION

P.O. Box 2088
Santa Fe, New Mexico 87504-2088

RECEIVED

MAY 18 1992

DISTRICT I
P.O. Box 1980, Hobbs, NM 88240

DISTRICT II
P.O. Drawer DD, Artesia, NM 88210

DISTRICT III
1000 Rio Brazos Rd., Aztec, NM 87410

API NO. (assigned by OCD on New Wells)

20-015-27008

5. Indicate Type of Lease

STATE ☒

FEE ☐

6. State Oil & Gas Lease No.

V-2372

APPLICATION FOR PERMIT TO DRILL, DEEPEN, OR PLUG BACK

1a. Type of Work:

DRILL ☒

RE-ENTER ☐

DEEPEN ☐

PLUG BACK ☐

b. Type of Well:

OIL
WELL ☒

GAS
WELL ☐

OTHER ☐

SINGLE
ZONE ☐

MULTIPLE
ZONE ☐

7. Lease Name or Unit Agreement Name

Cactus State 16 State

2. Name of Operator

Bettis, Boyle & Stovall

8. Well No.

-1-

3. Address of Operator

P. O. Box 1240, Graham, TX 76450

9. Pool name or Wildcat

Wildcat Brushy Canyon

4. Well Location

Unit Letter EC: 2310 Feet From The West

Line and 330

Feet From The North

Line

Section 16

Township 24S

Range 31E

NMPM

Eddy

County

10. Proposed Depth

8500'

11. Formation

Brushy Canyon

12. Rotary or C.T.

Rotary

13. Elevations (Show whether DF, RT, GR, etc.)

3493.2 GR

14. Kind & Status Plug. Bond

Statewide

15. Drilling Contractor

Not available

16. Approx. Date Work will start

June 15, 1992

17. PROPOSED CASING AND CEMENT PROGRAM

SIZE OF HOLE	SIZE OF CASING	WEIGHT PER FOOT	SETTING DEPTH	SACKS OF CEMENT	EST. TOP
17"	13-3/8"	54#	650'	950	surf.
12-1/4"	8-5/8"	24# & 32#	4200'	1600	surf.
7-7/8"	5-1/2"	15.5# & 17#	8500'	1200	4000'

Drill 17-1/2" hole to 650', set 13-3/8" surface csg.
Drill 11' hole w/ brine wtr. to 4200'. Set 8-5/8" intermediate csg.
Drill 7-7/8" hole to 8500' w/ fresh water mud system. Run 5-1/2" csg. if productive.
Blowout preventers to include pipe rams, blind rams, and hydril.
Annular preventer w/ a minimum 3000 psi rating.

Part ID-1
5-22-92
MWD & API

APPROVAL VALID FOR 180 DAYS
PERMIT EXPIRES 11/20/92
UNLESS DRILLING UNDERWAY

IN ABOVE SPACE DESCRIBE PROPOSED PROGRAM: IF PROPOSAL IS TO DEEPEN OR PLUG BACK, GIVE DATA ON PRESENT PRODUCTIVE ZONE AND PROPOSED NEW PRODUCTIVE ZONE. GIVE BLOWOUT PREVENTER PROGRAM, IF ANY.

I hereby certify that the information above is true and complete to the best of my knowledge and belief.

SIGNATURE

Kim Ligon

TITLE Production Analyst

DATE 5/14/92

TYPE OR PRINT NAME

Kim Ligon

TELEPHONE NO. 817-549-0781

(This space for State Use)

ORIGINAL SIGNED BY

MIKE WILLIAMS

SUPERVISOR, DISTRICT II

APPROVED BY

TITLE

DATE

MAY 20 1992

CONDITIONS OF APPROVAL, IF ANY:

Submit to Appropriate
District Office
State Lease - 4 copies
Fee Lease - 3 copies

State of New Mexico
Energy, Minerals and Natural Resources Department

Form C-102
Revised 1-1-89

OIL CONSERVATION DIVISION

P.O. Box 2088
Santa Fe, New Mexico 87504-2088

DISTRICT I

P.O. Box 1980, Hobbs, NM 88240

DISTRICT II

P.O. Drawer DD, Artesia, NM 88210

DISTRICT III

1000 Rio Brazos Rd., Aztec, NM 87410

WELL LOCATION AND ACREAGE DEDICATION PLAT

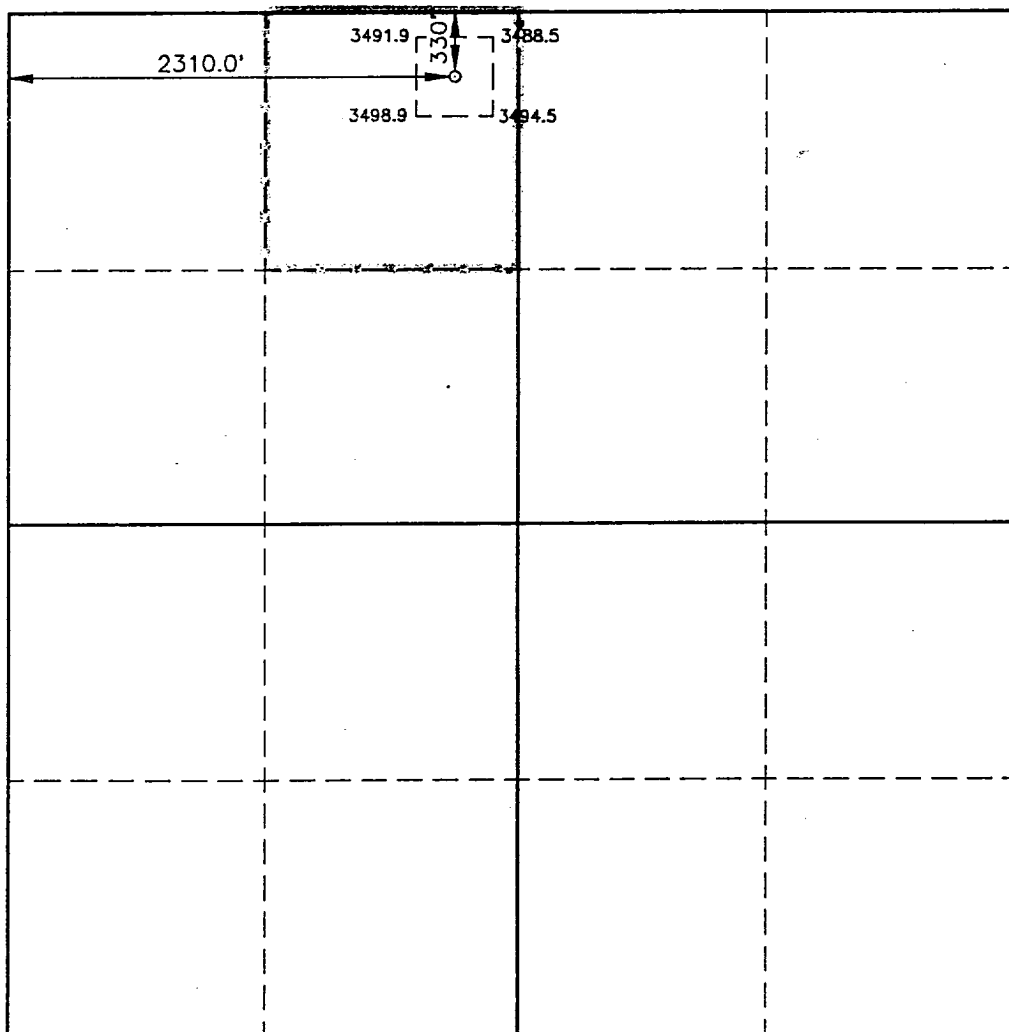
All Distances must be from the outer boundaries of the section

Operator BETTIS, BOYLE & STOVALL			Lease CACTUS STATE 16		Well No. 1
Unit Letter C	Section 16	Township 24-S	Range 31-E	County EDDY	
Actual Footage Location of Well:					
330 feet from the		NORTH	Line and	2310	feet from the WEST Line
Ground Level Elev. 3493.2	Producing Formation Brushy Canyon		Pool Wildcat		Dedicated Acreage: 40 Acres

1. Outline the acreage dedicated to the subject well by colored pencil or hachure marks on the plat below.
2. If more than one lease is dedicated to the well, outline each and identify the ownership thereof (both as to working interest and royalty).
3. If more than one lease of different ownership is dedicated to the well, have the interest of all owners been consolidated by communitization, unitization, force-pooling, etc.?
☐ Yes ☐ No If answer is "yes" type of consolidation _____

If answer is "no" list of owners and tract descriptions which have actually been consolidated. (Use reverse side of this form necessary. _____)

No allowable will be assigned to the well unit all interests have been consolidated (by communitization, unitization, forced-pooling, otherwise) or until a non-standard unit, eliminating such interest, has been approved by the Division.



OPERATOR CERTIFICATION

I hereby certify the the information
contained herein is true and complete to the
best of my knowledge and belief.

Signature
Kim Ligon
Printed Name
Kim Ligon
Position
Production Anlayst
Company
Bettis, Boyle & Stovall
Date
5/14/92

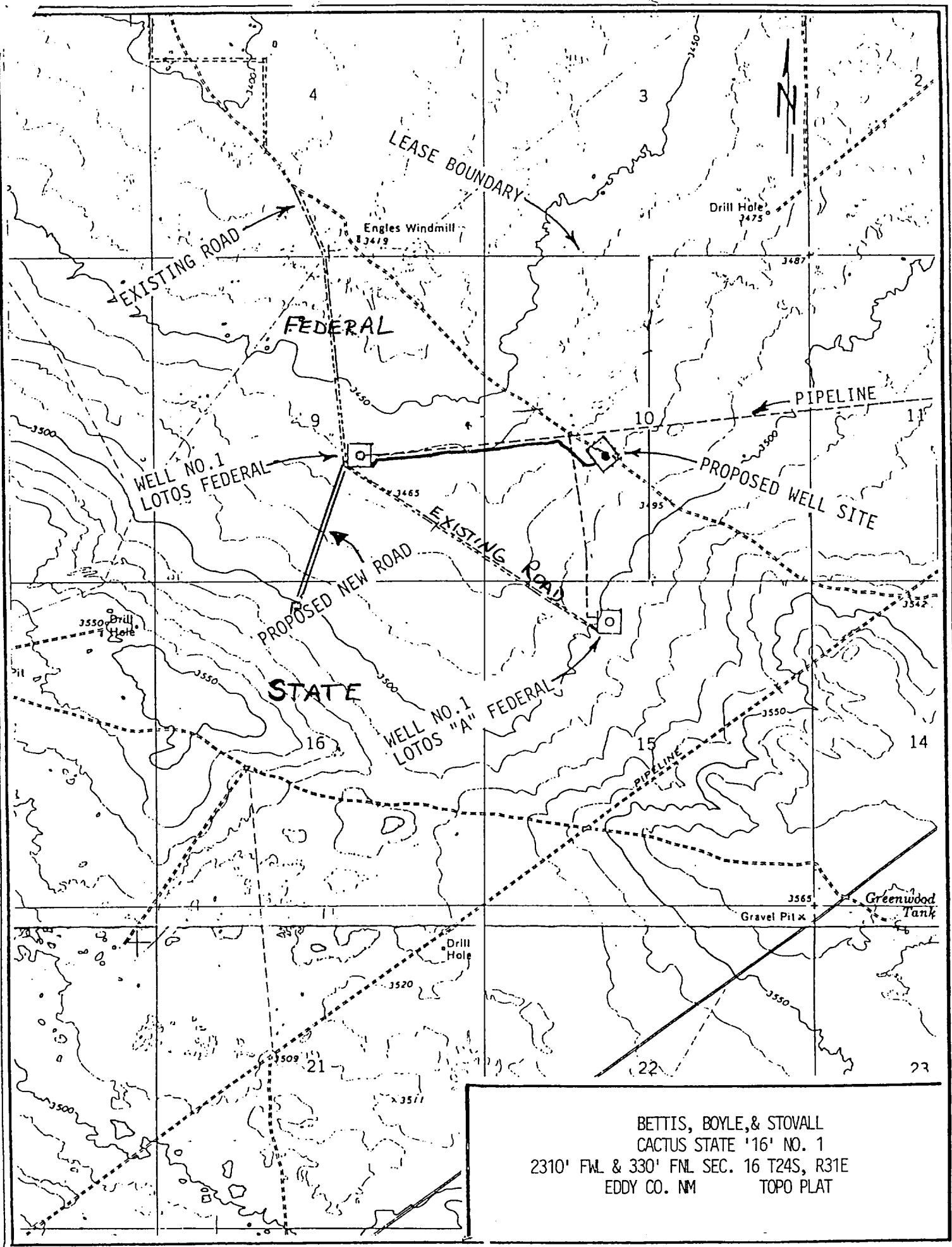
SURVEYOR CERTIFICATION

I hereby certify that the well location shown
on this plat was plotted from field notes of
actual surveys made by me or under my
supervision, and that the same is true and
correct to the best of my knowledge and
belief.

Date Surveyed
MAY 1, 1992
Signature & Seal of
Professional Surveyor

Ronald J. Eidson
Certificate No. **JOHN W. WEST, 676**
RONALD J. EIDSON, 3238
GARY E. JONES, 7977
RONALD J. EIDSON

0 330 660 990 1320 1650 1980 2310 2640 2000 1500 1000 500 0



BETTIS, BOYLE, & STOVALL
CACTUS STATE '16' NO. 1
2310' FWL & 330' FNL SEC. 16 T24S, R31E
EDDY CO. NM TOPO PLAT