

OIL CONSERVATION DIVISION

P.O. Box 2088

Santa Fe, New Mexico 87504-2088

DISTRICT I

P.O. Box 1280, Hobbs, NM 88240

DISTRICT II

P.O. Drawer DD, Artesia, NM 88210

DISTRICT III

1000 Rio Braxos Rd., Aztec, NM 87410

WELL LOCATION AND ACREAGE DEDICATION PLAT

All Distances must be from the outer boundaries of the section

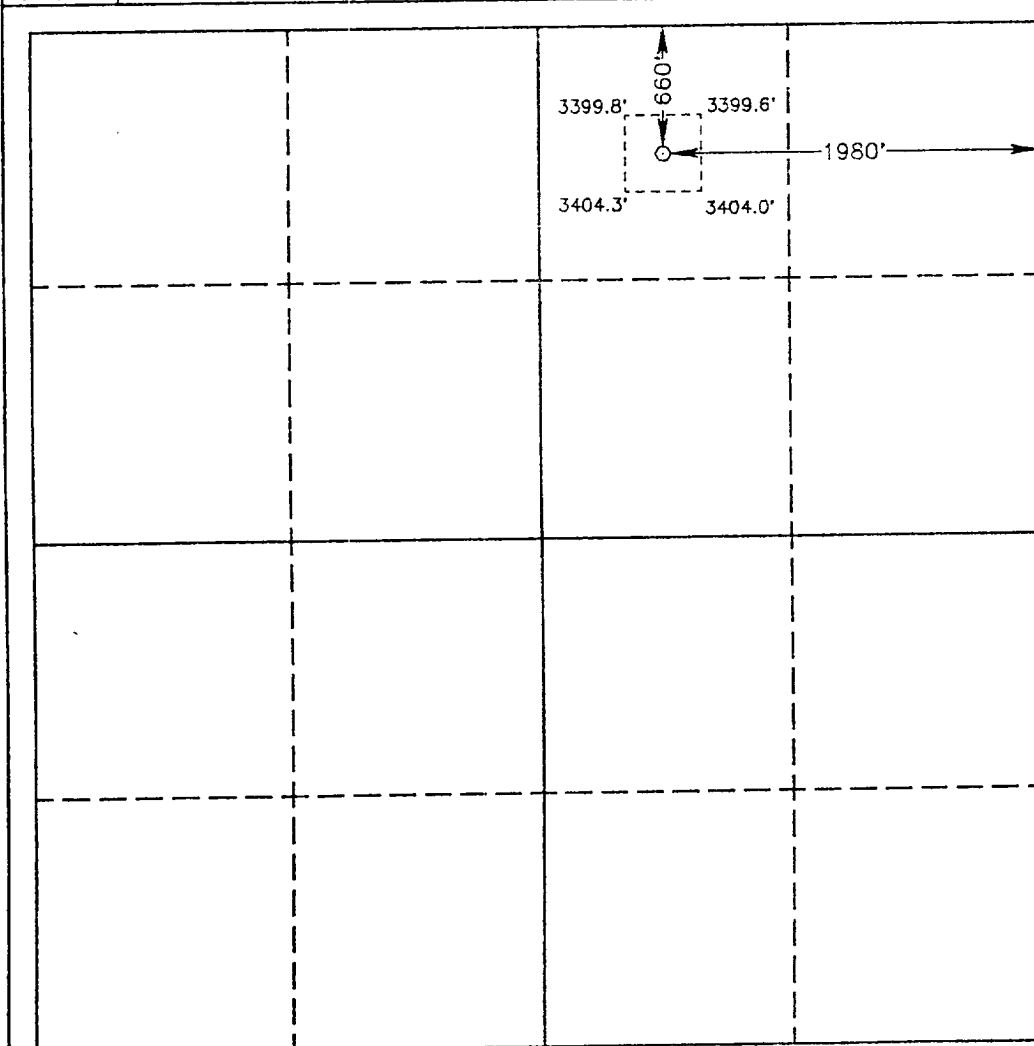
Operator MERIT ENERGY CO.		Lease SUNDANCE F ₂ d		Well No. 4
Unit Letter B	Section 5	Township 24 SOUTH	Range 31 EAST NMPM	County EDDY
Actual Footage Location of Well: 660 feet from the NORTH line and 1980 feet from the EAST line				
Ground Level Elev. 3402.0'	Producing Formation Delaware		Pool Wildcat	Dedicated Acreage: 40 Acres

1. Outline the acreage dedicated to the subject well by colored pencil or hatchure marks on the plat below.
2. If more than one lease is dedicated to the well, outline each and identify the ownership thereof (both as to working interest and royalty).
3. If more than one lease of different ownership is dedicated to the well, have the interest of all owners been consolidated by communitization, unitization, force-pooling, etc.?

☐ Yes ☐ No If answer is "yes" type of consolidation

If answer is "no" list of owners and tract descriptions which have actually been consolidated. (Use reverse side of this form necessary).

No allowable will be assigned to the well unit all interests have been consolidated (by communitization, unitization, forced-pooling, otherwise) or until a non-standard unit, eliminating such interest, has been approved by the Division.



OPERATOR CERTIFICATION

I hereby certify the the information
contained herein is true and complete to the
best of my knowledge and belief.

Signature _____

Printed Name _____

Position

1700	Сотраду
------	---------

Date _____

SURVEYOR CERTIFICATION

I hereby certify that the well location shown on this plat was plotted from field notes of actual surveys made by me or under my supervision, and that the same is true and correct to the best of my knowledge and belief.

Date Surveyed

NOVEMBER 19, 1992

Signature & Seal of
Professional Surveyor

Certificate No.	JOHN W. WEST	676
	RONALD I. EIDSON	3230
	THOMAS J. EIDSON	7877

92-11-1881