

OIL CONSERVATION DIVISION

DISTRICT I  
P.O. Box 1980, Hobbs, NM 88240

P.O. Box 2088

Santa Fe, New Mexico 87504-2088

DISTRICT II  
P.O. Drawer DD, Artesia, NM 88210

DISTRICT III  
1000 Rio Brazos Rd., Aztec, NM 87410

WELL LOCATION AND ACREAGE DEDICATION PLAT

All Distances must be from the outer boundaries of the section

Operator MERIT ENERGY CO.			Lease SUNDANCE Fed		Well No. 4
Unit Letter B	Section 5	Township 24 SOUTH	Range 31 EAST	NMPM	County EDDY

Actual Footage Location of Well:

660 feet from the NORTH line and		1980 feet from the EAST line	
Ground Level Elev. 3402.0'	Producing Formation Delaware	Pool Wildcat	Dedicated Acreage: 40 Acres

- Outline the acreage dedicated to the subject well by colored pencil or hatchure marks on the plat below.
- If more than one lease is dedicated to the well, outline each and identify the ownership thereof (both as to working interest and royalty).
- If more than one lease of different ownership is dedicated to the well, have the interest of all owners been consolidated by communitization, unitization, force-pooling, etc.?  
☐ Yes ☐ No If answer is "yes" type of consolidation \_\_\_\_\_

If answer is "no" list of owners and tract descriptions which have actually been consolidated. (Use reverse side of this form necessary.)

No allowable will be assigned to the well unit all interests have been consolidated (by communitization, unitization, forced-pooling, otherwise) or until a non-standard unit, eliminating such interest, has been approved by the Division.

OPERATOR CERTIFICATION

I hereby certify the the information contained herein is true and complete to the best of my knowledge and belief.

Signature  
*Russell Whitel*  
Printed Name  
Russell Whitel  
Position  
Prod Supt  
Company  
Merit Energy  
Date  
1-5-93

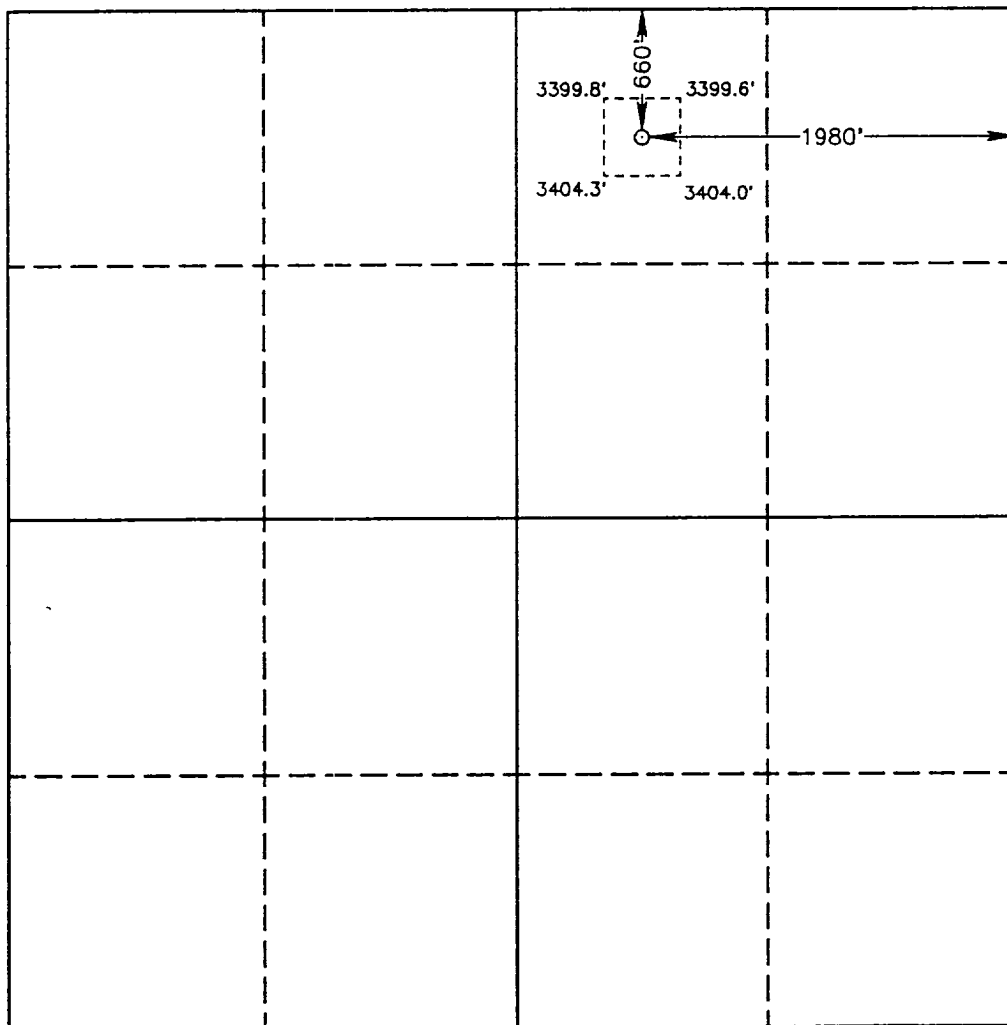
SURVEYOR CERTIFICATION

I hereby certify that the well location shown on this plat was plotted from field notes of actual surveys made by me or under my supervision, and that the same is true and correct to the best of my knowledge and belief.

Date Surveyed  
NOVEMBER 19, 1992

Signature & Seal of  
Professional Surveyor

*James L. Jones*  
Certification No. 7877  
NEW MEXICO  
RONALD J. EIDSON  
GARY L. JONES  
92-11-1881  
PROFESSIONAL SURVEYOR



0 330 660 990 1320 1650 1980 2310 2640 2000 1500 1000 500 0