

**OIL CONSERVATION DIVISION**

P.O. Box 2088

Santa Fe, New Mexico 87504-2088

**DISTRICT I**

P.O. Box 1980, Hobbs, NM 88240

**DISTRICT II**

P.O. Drawer DD, Artesia, NM 88210

**DISTRICT III**

1000 Rio Brazos Rd., Aztec, NM 87410

**WELL LOCATION AND ACREAGE DEDICATION PLAT**

All Distances must be from the outer boundaries of the section

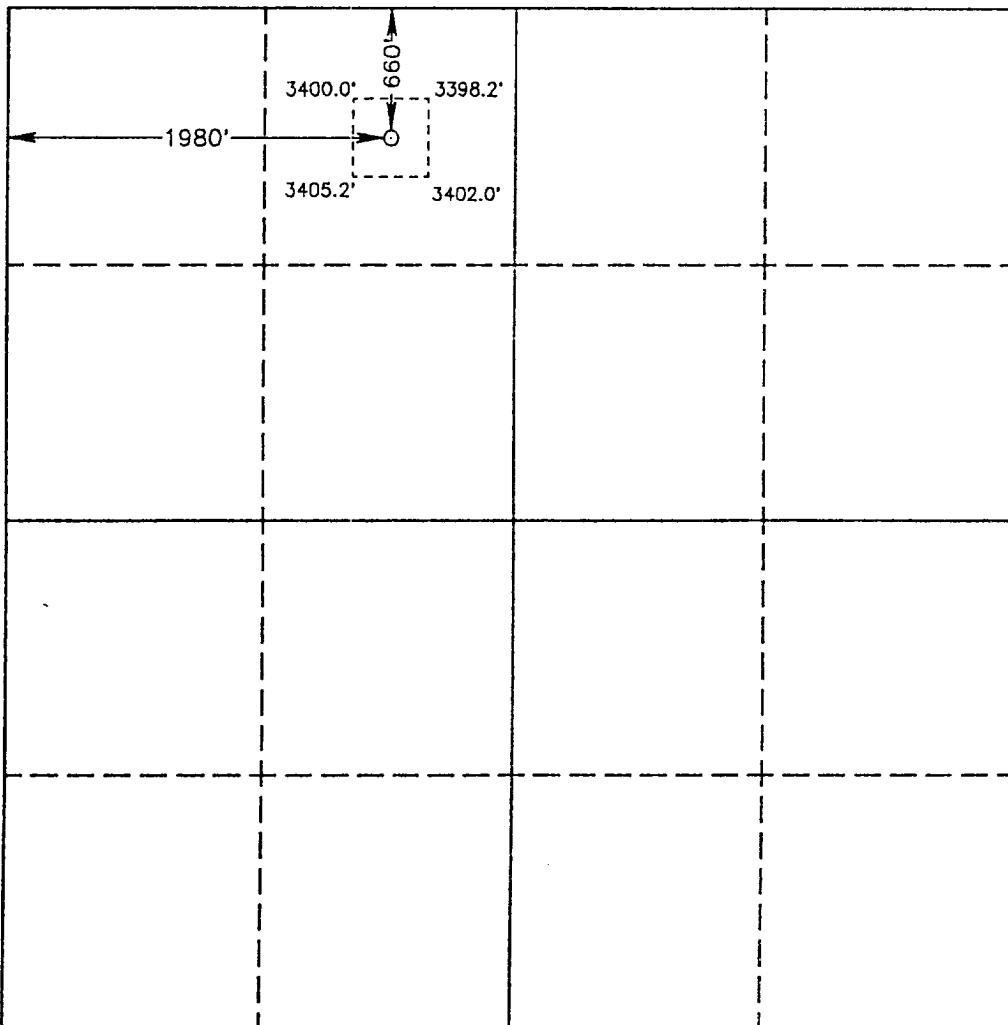
Operator MERIT ENERGY CO.		Lease SUNDANCE Fed.		Well No. 5
Unit Letter C	Section 5	Township 24 SOUTH	Range 31 EAST NMPM	County EDDY
Actual Footage Location of Well: 660 feet from the NORTH line and 1980 feet from the WEST line				
Ground Level Elev. 3401.8'	Producing Formation DELAWARE	Pool WILDEAT	Dedicated Acreage: 40 Acres	

- Outline the acreage dedicated to the subject well by colored pencil or hachure marks on the plat below.
- If more than one lease is dedicated to the well, outline each and identify the ownership thereof (both as to working interest and royalty).
- If more than one lease of different ownership is dedicated to the well, have the interest of all owners been consolidated by communization, unitization, force-pooling, etc.?
 

Yes     No    If answer is "yes" type of consolidation \_\_\_\_\_

If answer is "no" list of owners and tract descriptions which have actually been consolidated. (Use reverse side of this form necessary.)

No allowable will be assigned to the well unit all interests have been consolidated (by communization, unitization, forced-pooling, otherwise) or until a non-standard unit, eliminating such interest, has been approved by the Division.



**OPERATOR CERTIFICATION**

I hereby certify the the information contained herein is true and complete to the best of my knowledge and belief.

Signature: *Russell Whitel*  
 Printed Name: Russell Whitel  
 Position: Prod. Supt.  
 Company: Merit Energy  
 Date: 1-5-93

**SURVEYOR CERTIFICATION**

I hereby certify that the well location shown on this plat was plotted from field notes of actual surveys made by me or under my supervision, and that the same is true and correct to the best of my knowledge and belief.

Date Surveyed: NOVEMBER 19, 1992

Signature & Seal of Professional Surveyor

Professional Surveyor Seal for Gary L. Jones, New Mexico, No. 7977. Includes handwritten signature and other certification details.

