

OIL CONSERVATION DIVISION

Santa Fe, New Mexico 87504-2088

DISTRICT II

P.O. Drawer DD, Artesia, NM 88210

DISTRICT III

1000 Rio Brazos Rd., Aztec, NM 87410

WELL LOCATION AND ACREAGE DEDICATION PLAT

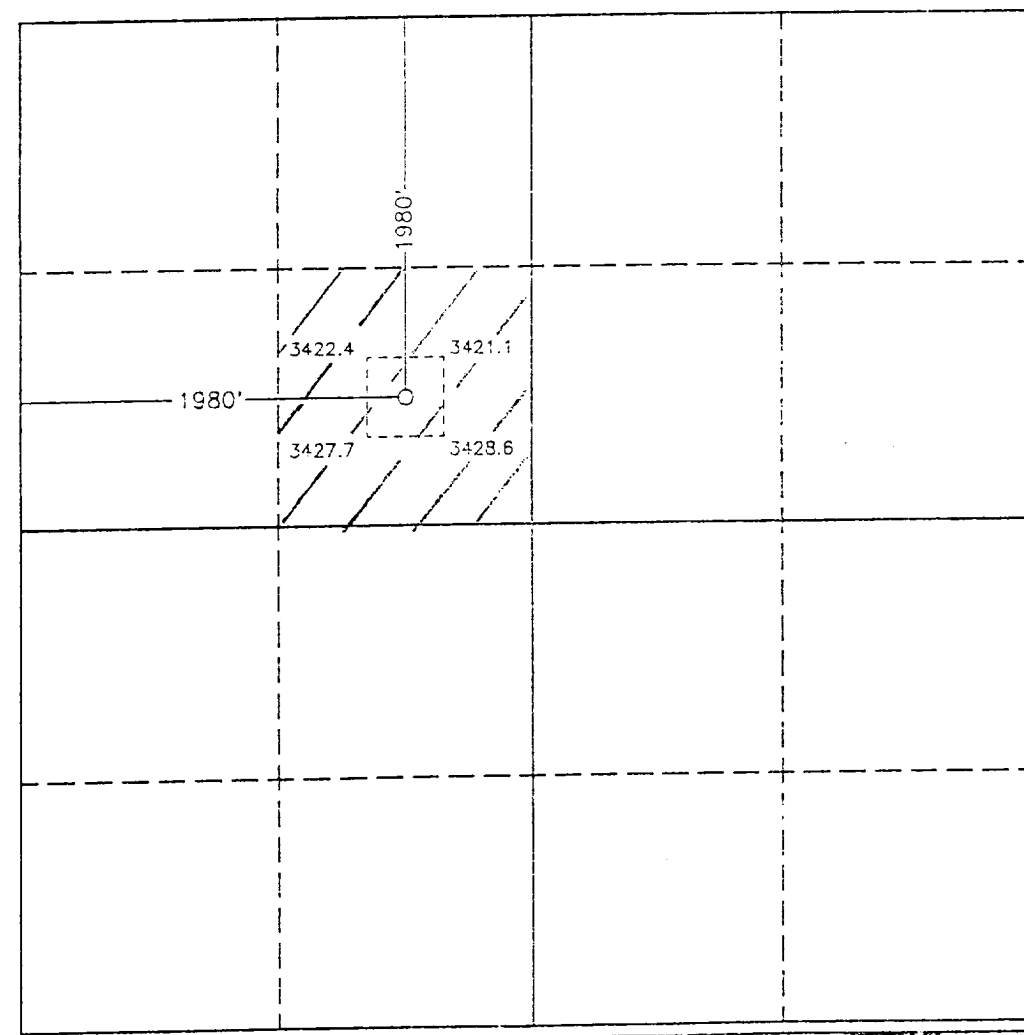
All Distances must be from the outer boundaries of the section

Operator MERIT ENERGY CO.		Lease SUNDANCE FEDERAL		Well No. 8
Unit Letter F	Section 5	Township 24 SOUTH	Range 31 EAST NMPM	County EDDY
Actual Footage Location of Well:				
1980 feet from the NORTH line and		1980 feet from the WEST line		
Ground Level Elev. 3425.4	Producing Formation Delaware	Pool Wildcat		Dedicated Acreage: 40 Acres

1. Outline the acreage dedicated to the subject well by colored pencil or hatchure marks on the plat below.
2. If more than one lease is dedicated to the well, outline each and identify the ownership thereof (both as to working interest and royalty).
3. If more than one lease of different ownership is dedicated to the well, have the interest of all owners been consolidated by communitization, unitization, force-pooling, etc?
- ☐ Yes ☐ No If answer is "yes" type of consolidation _____

If answer is "no" list of owners and tract descriptions which have actually been consolidated. (Use reverse side of this form necessary.)

No allowable will be assigned to the well unit all interests have been consolidated (by communitization, unitization, forced-pooling, otherwise) or until a non-standard unit, eliminating such interest, has been approved by the Division.



OPERATOR CERTIFICATION

I hereby certify the the information
contained herein is true and complete to the
best of my knowledge and belief.

Signature *[Signature]*

Printed Name

Russell Whited

Position

Production Supt.

Company

Merit Energy Company

Date _____

4-7-93

SURVEYOR CERTIFICATION

I hereby certify that the well location shown on this plat was plotted from field notes of actual surveys made by me or under my supervision, and that the same is true and correct to the best of my knowledge and belief.

Date Surveyed

JANUARY 29, 1993

Signature & Seal of
Professional Surveyor

Mary K. Jones

Certification	JOHN W. WEST	570
---------------	--------------	-----

RONALD J. EDSON 5231

1000 1000 1000

CONFIDENTIAL

53-41-0122