

Submit to Appropriate  
District Office  
State Lease - 6 copies  
Fee Lease - 5 copies

State of New Mexico  
Energy, Minerals and Natural Resources Department

Form C-101  
Revised 1-1-89

DISTRICT I  
P.O. Box 1980, Hobbs, NM 88240

DISTRICT II  
P.O. Drawer DD, Artesia, NM 88210

DISTRICT III  
1000 Rio Brazos Rd., Aztec, NM 87410

OIL CONSERVATION DIVISION

P.O. Box 2088  
Santa Fe, New Mexico 87504-2088

RECEIVED

OCT - 8 1993

API NO. (assigned by OCD on New Wells)

30-015-27713

5. Indicate Type of Lease

STATE ☐

FEE ☒

6. State Oil & Gas Lease No.

APPLICATION FOR PERMIT TO DRILL, DEEPEN, OR PLUG BACK

1a. Type of Work:

DRILL ☒

RE-ENTER ☐

DEEPEN ☐

PLUG BACK ☐

b. Type of Well:

OIL  
WELL ☒

GAS  
WELL ☐

OTHER ☐

SINGLE  
ZONE ☐

MULTIPLE  
ZONE ☐

7. Lease Name or Unit Agreement Name

Delta "9" Fee

2. Name of Operator

Santa Fe Energy Operating Partners, L.P.

8. Well No.

1

3. Address of Operator

550 W. Texas, Suite 1330, Midland, Texas 79701

9. Pool name or Wildcat

WILDCAT  
Undesignated (Delaware)

4. Well Location

Unit Letter M : 660 Feet From The South Line and 660 Feet From The West Line

Section 9 Township 25S Range 28E NMPM Eddy County

10. Proposed Depth

6400'

11. Formation

Delaware

12. Rotary or C.T.

Rotary

13. Elevations (Show whether DF, RT, GR, etc.)

2993' GR

14. Kind & Status Plug. Bond

Blanket - current

15. Drilling Contractor

To be determined

16. Approx. Date Work will start

October 20, 1993

17.

PROPOSED CASING AND CEMENT PROGRAM

SIZE OF HOLE	SIZE OF CASING	WEIGHT PER FOOT	SETTING DEPTH	SACKS OF CEMENT	EST. TOP
12-1/4"	8-5/8"	24.0	400'	200 sx	Circulate
7-7/8"	5-1/2"	15.5	6400'	1500 sx	Surface

Move on location and rig up. Spud 12-1/4" hole and drill to  $\pm 400'$ . Run 8-5/8" casing and cement with sufficient Class "C" containing 2%  $\text{CaCl}_2$  to circulate to surface. WOC 4 hours prior to cut-off and weld on 8-5/8" casing head and NU 11" x 3000 psi BOP stack to consist of an annular preventer, double ram preventer and choke manifold. Test casing to 600 psi and BOP stack to 1500 psi. Drill 7-7/8" hole to 6400'. Log, run 5-1/2" casing and cement in two stages with stage collar at  $\pm 3000'$  utilizing Class "C" cement to bring cement top to the surface.

IO-1  
10-18-93  
NL9AP1

IN ABOVE SPACE DESCRIBE PROPOSED PROGRAM: IF PROPOSAL IS TO DEEPEN OR PLUG BACK, GIVE DATA ON PRESENT PRODUCTIVE ZONE AND PROPOSED NEW PRODUCTIVE ZONE. GIVE BLOWOUT PREVENTER PROGRAM, IF ANY.

I hereby certify that the information above is true and complete to the best of my knowledge and belief.

SIGNATURE Darrell Roberts TITLE Sr. Drilling Engineer DATE Oct. 7, 1993

TYPE OR PRINT NAME Darrell Roberts TELEPHONE NO. 915/ 687-3551

(This space for State Use)

ORIGINAL SIGNED BY

MIKE WILLIAMS

OCT 15 1993

APPROVED BY SUPERVISOR, DISTRICT II TITLE \_\_\_\_\_ DATE \_\_\_\_\_

CONDITIONS OF APPROVAL, IF ANY:

APPROVAL VALID FOR 180 DAYS  
PERMIT EXPIRES 4-15-94  
WELL DRILLING UNDERWAY

**DISTRICT I**  
P. O. Box 1980  
Hobbs, NM 88240

**OIL CONSERVATION DIVISION**  
P. O. Box 2088  
Santa Fe, New Mexico 87504-2088

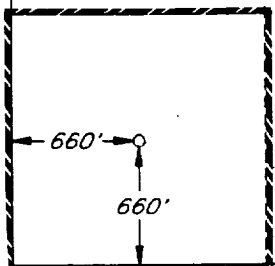
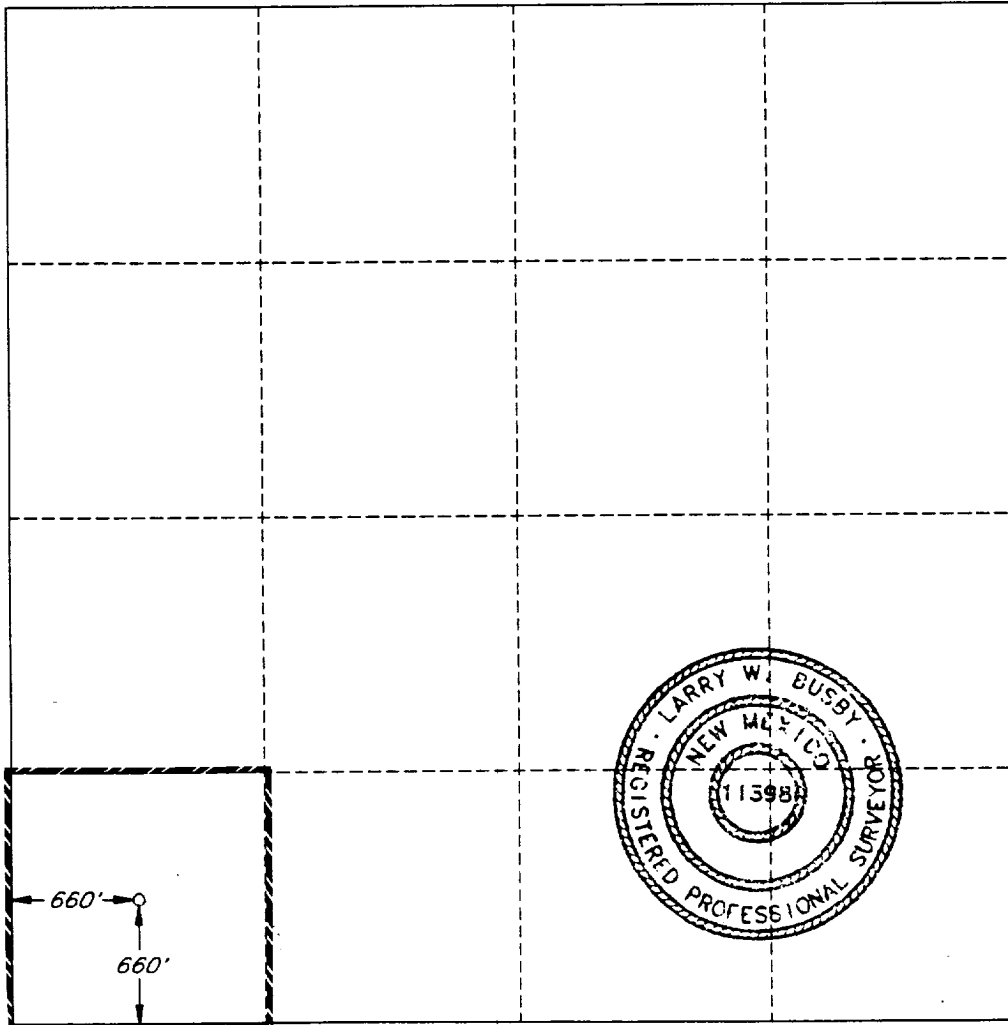
**DISTRICT II**  
P. O. Drawer DD  
Artesia, NM 88210

**DISTRICT III**  
1000 Rio Brazos Rd  
Aztec, NM 87410

**WELL LOCATION AND ACREAGE DEDICATION PLAT**  
All distances must be from the outer boundaries of the section.

Operator <b>SANTA FE ENERGY OPER. PART, L.P.</b>			Lease <b>DELTA FEE '9'</b>		Well No. <b>1</b>
Unit Letter <b>M</b>	Section <b>9</b>	Township <b>25 SOUTH</b>	Range <b>28 EAST, N.M.P.M.</b>	County <b>EDDY</b>	
Actual Footage Location of Well <b>660</b> feet from the <b>SOUTH</b> line and <b>660</b> feet from the <b>WEST</b> line					
Ground Level Elev. <b>2993'</b>	Producing Formation <b>Delaware</b>		Pool <b>Undesignated (Delaware)</b>		<b>40</b> Acres

1. Outline the acreage dedicated to the subject well by colored pencil or hatchure marks on the plat below.
2. If more than one lease is dedicated to the well, outline each and identify the ownership thereof (both as to working interest and royalty).
3. If more than one lease of different ownership is dedicated to the well, have the interest of all the owners been consolidated by communitization, unitization, forced-pooling, etc.?  
☐ Yes ☒ No If answer is "yes", type of consolidation \_\_\_\_\_  
If the answer is "no", list the owners and tract descriptions which have actually been consolidated. (Use the reverse side of this form if necessary.) \_\_\_\_\_  
No allowable will be assigned to the well until all interests have been consolidated (by communitization, unitization, forced-pooling, or otherwise) or until a non-standard unit, eliminating such interest, has been approved by the division.



**OPERATOR CERTIFICATION**

I hereby certify that the information herein is true and complete to the best of my knowledge and belief.

Signature  
*Darrell Roberts*  
Printed Name  
**Darrell Roberts**  
Position  
**Sr. Drilling Engineer**  
Company  
**Santa Fe Energy Operating Partners, L.P.**  
Date  
**October 7, 1993**

**SURVEYOR CERTIFICATION**

I hereby certify that the well location shown on this plat was plotted from field notes of actual surveys made by me or under my supervision, and that the same is true and correct to the best of my knowledge and belief.

Date Surveyed  
**SEPTEMBER 28, 1993**

Signature and Seal of  
Professional Surveyor

Certificate No.  
**LARRY W. BUSBY R.P.S. #11398**  
cls / 99274 / 24NE