

# UNDEDED LOCATION

Submit to Appropriate  
District Office  
State Lease - 4 copies  
Fee Lease - 3 copies

State of New Mexico  
Energy, Minerals and Natural Resources Department

Form C-102  
Revised 1-1-89

## OIL CONSERVATION DIVISION

DISTRICT I  
P.O. Box 1980, Hobbs, NM 88240

P.O. Box 2088  
Santa Fe, New Mexico 87504-2088

DISTRICT II  
P.O. Drawer DD, Artesia, NM 88210

DISTRICT III  
1000 Rio Brasos Rd., Aztec, NM 87410

## WELL LOCATION AND ACREAGE DEDICATION PLAT

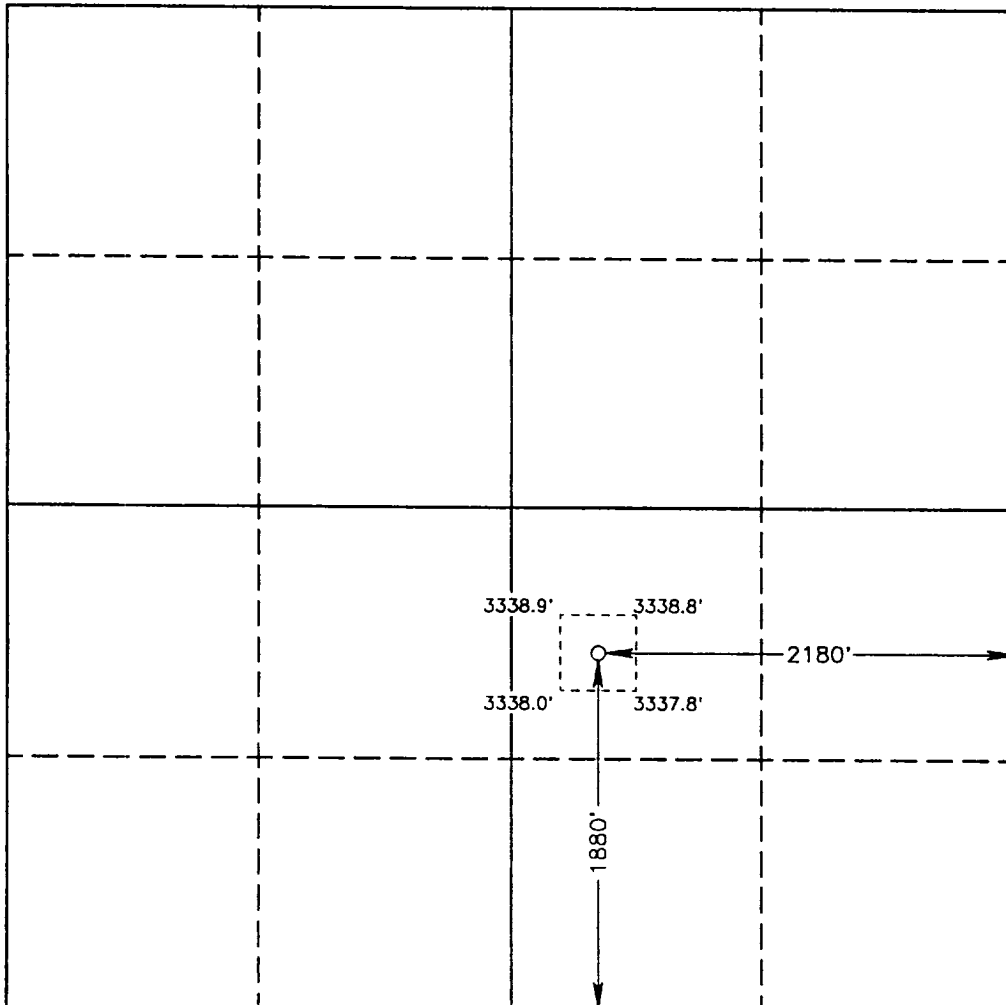
All Distances must be from the outer boundaries of the section

Operator ENRON OIL AND GAS CO.			Lease GUNNISON "34" FEDERAL		Well No. 1
Unit Letter J	Section 34	Township 25 SOUTH	Range 31 EAST	NMPM	County EDDY
Actual Footage Location of Well:					
1880 feet from the SOUTH line and		2180 feet from the EAST line			
Ground Level Elev. 3340.4'	Producing Formation Bone Spring	Pool Wildcat	Dedicated Acreage: 40 Acres		

- Outline the acreage dedicated to the subject well by colored pencil or hachure marks on the plat below.
  - If more than one lease is dedicated to the well, outline each and identify the ownership thereof (both as to working interest and royalty).
  - If more than one lease of different ownership is dedicated to the well, have the interest of all owners been consolidated by communitization, unitization, force-pooling, etc.?
 

☐ Yes
 ☐ No
 If answer is "yes" type of consolidation \_\_\_\_\_
 

If answer is "no" list of owners and tract descriptions which have actually been consolidated. (Use reverse side of this form necessary.)
- No allowable will be assigned to the well unit all interests have been consolidated (by communitization, unitization, forced-pooling, otherwise) or until a non-standard unit, eliminating such interest, has been approved by the Division.



### OPERATOR CERTIFICATION

I hereby certify that the information contained herein is true and complete to the best of my knowledge and belief.

Signature  
*Betty Gildon*  
Printed Name  
Betty Gildon  
Position  
Regulatory Analyst  
Company  
Enron Oil & Gas Company  
Date  
11/10/93

### SURVEYOR CERTIFICATION

I hereby certify that the well location shown on this plat was plotted from field notes of actual surveys made by me or under my supervision, and that the same is true and correct to the best of my knowledge and belief.

Date Surveyed  
SEPTEMBER 16, 1993

Signature & Seal of  
Professional Surveyor

*Gary L. Jones*  
GARY L. JONES  
NEW MEXICO  
7977  
Certification No. JOHN W. WEAVER 676  
RONALD J. GILSON 3239  
GARY L. JONES 7977  
93-11-24808