

NM OIL CONSERVATION
UNITED STATES DEPARTMENT OF THE INTERIOR
BUREAU OF LAND MANAGEMENT
88210FORM APPROVED
OMB NO. 1004-0136
Expires: February 28, 1995

APPLICATION FOR PERMIT TO DRILL OR DEEPEN

1a. TYPE OF WORK DRILL <input checked="" type="checkbox"/> DEEPEN <input type="checkbox"/>		5. LEASE DESIGNATION AND SERIAL NO. LC 061705-B	
b. TYPE OF WELL OIL WELL <input checked="" type="checkbox"/> GAS WELL <input type="checkbox"/> OTHER <input type="checkbox"/>		6. IF INDIAN, ALLOTTEE OR TRIBE NAME	
2. NAME OF OPERATOR FORTSON OIL COMPANY		7. UNIT AGREEMENT NAME	
3. ADDRESS AND TELEPHONE NO. 3325 W. WADLEY, SUITE 213, MIDLAND, TX 79707 (915) 520-4347		8. FARM OR LEASE NAME, WELL NO. Poker Lake Unit # 86	
4. LOCATION OF WELL (Report location clearly and in accordance with any State requirements.)* At surface 1980 FSL & 660 FWL At proposed prod. zone same		9. API WELL NO. 30-015-27912	
14. DISTANCE IN MILES AND DIRECTION FROM NEAREST TOWN OR POST OFFICE* 32 miles east Southeast of Carlsbad, NM		10. FIELD AND POOL, OR WILDCAT Poker Lake Delaware, SW	
15. DISTANCE FROM PROPOSED* LOCATION TO NEAREST PROPERTY OR LEASE LINE, FT. (Also to nearest drlg. unit line, if any) 660		11. SEC., T., R., M., OR BLK. AND SURVEY OR AREA Sec. 19 T24S, R31E 96047	
16. NO. OF ACRES IN LEASE 320		12. COUNTY OR PARISH Eddy	
17. NO. OF ACRES ASSIGNED TO THIS WELL 40		13. STATE NM	
18. DISTANCE FROM PROPOSED* LOCATION TO NEAREST WELL, DRILLING, COMPLETED, OR APPLIED FOR, ON THIS LEASE, FT. 1320		19. PROPOSED DEPTH 8400	
20. ROTARY OR CABLE TOOLS Rotary		21. APPROX. DATE WORK WILL START* Upon approval	
22. ELEVATIONS (Show whether DF, RT, GR, etc.) 3461			

23. PROPOSED CASING AND CEMENTING PROGRAM

SIZE OF HOLE	GRADE, SIZE OF CASING	WEIGHT PER FOOT	SETTING DEPTH	QUANTITY OF CEMENT
17.5"	K-55, 13.375"	48-60#	700'	Circulate
11"	J-55, 8.625"	24-32#	4000'	Circulate
7.875"	J-55/N-80, 5.5"	15.5-20#	8400'	1000 sx (tie back to 8 5/8" csg.)

Operator proposes to drill to the Delaware formation to test for possible commercial production of oil and gas. If productive, 5.5" casing will be set and cemented to TD. If non-productive, the well will be plugged and abandoned in a manner consistent with Federal and State Regulations and according to good engineering practice. Specific programs according to Onshore Oil & Gas Order #1 are outlined in the following attachments:

1. Well Location and Acreage Dedication Plat
2. Drilling Program
Exhibits Nos. 1 & 1A - Blowout Preventers
3. Surface Use and Operating Plan
Exhibit #2 - Existing Roads
Exhibit #2A - Planned Access Roads
Exhibit #3 - One Mile Radius Map with Lease Boundary
Exhibit #3A - Well Status Within One Mile Radius
Exhibit #4 - Drilling Rig Layout
Exhibit #5 - Production Facilities Layout
Exhibit #6 - Pipe Flowline

IN ABOVE SPACE DESCRIBE PROPOSED PROGRAM: If proposal is to deepen, give data on present productive zone and proposed new productive zone. If proposal is to drill or deepen directionally, give pertinent data on subsurface locations and measured and true vertical depths. Give blowout preventer program, if any.

24. SIGNED Judy Dixon TITLE Production Technician DATE 11/13/93
(This space for Federal or State office use)

PERMIT NO. _____

APPROVAL DATE _____

Application approval does not warrant or certify that the applicant holds legal or equitable title to those rights in the subject lease which would entitle the applicant to conduct operations thereon.

CONDITIONS OF APPROVAL, IF ANY:

APPROVAL SUBJECT TO
GENERAL REQUIREMENTS AND
SPECIAL STIPULATIONS
ATTACHED

APPROVED BY (ORIG. SGD.) RICHARD L. MANUS
TITLE _____

AREA MANAGER

DATE APR 8 1994

*See Instructions On Reverse Side

Submit to Appropriate
District Office
State Lease - 4 copies
Fee Lease - 3 copies

State of New Mexico
Energy, Minerals and Natural Resources Department

Form C-102
Revised 1-1-89

OIL CONSERVATION DIVISION

DISTRICT I
P.O. Box 1980, Hobbs, NM 88240

P.O. Box 2088
Santa Fe, New Mexico 87504-2088

DISTRICT II
P.O. Drawer DD, Artesia, NM 88210

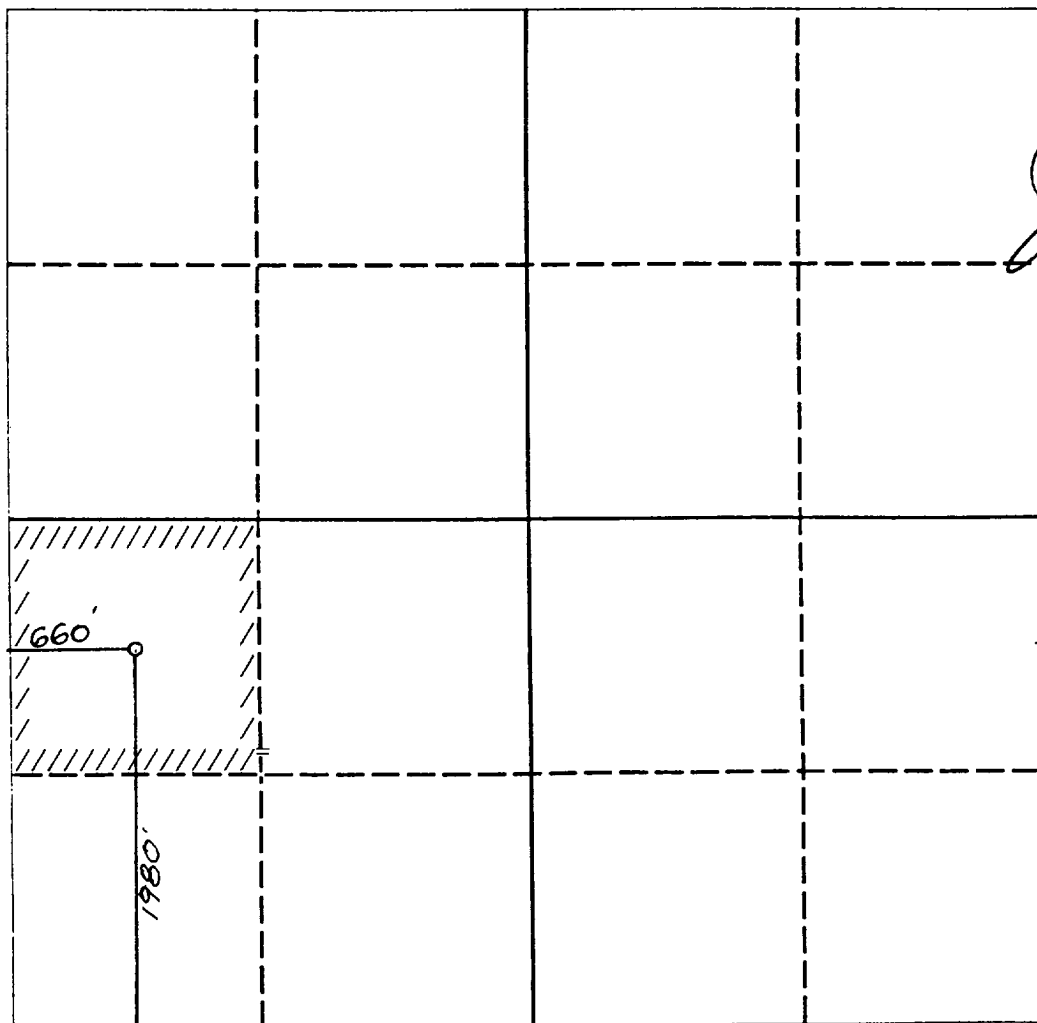
DISTRICT III
1000 Rio Brazos Rd., Aztec, NM 87410

WELL LOCATION AND ACREAGE DEDICATION PLAT

All Distances must be from the outer boundaries of the section

Operator FORTSON OIL COMPANY			Lease POKER LAKE UNIT		Well No. 86
Unit Letter L	Section 19	Township 24 SOUTH	Range 31 EAST	County EDDY COUNTY, NM	
Actual Footage Location of Well: 1980 feet from the SOUTH line and 660 feet from the WEST line					
Ground level Elev. 3461.	Producing Formation Delaware		Pool Poker Lake, SW		Dedicated Acreage: 40 Acres

- Outline the acreage dedicated to the subject well by colored pencil or hatchure marks on the plat below.
- If more than one lease is dedicated to the well, outline each and identify the ownership thereof (both as to working interest and royalty).
- If more than one lease of different ownership is dedicated to the well, have the interest of all owners been consolidated by communitization, unitization, force-pooling, etc.?
☐ Yes ☐ No If answer is "yes" type of consolidation _____
If answer is "no" list the owners and tract descriptions which have actually been consolidated. (Use reverse side of this form if necessary.) _____
No allowable will be assigned to the well until all interests have been consolidated (by communitization, unitization, forced-pooling, or otherwise) or until a non-standard unit, eliminating such interest, has been approved by the Division.



OPERATOR CERTIFICATION

I hereby certify that the information contained herein is true and complete to the best of my knowledge and belief.

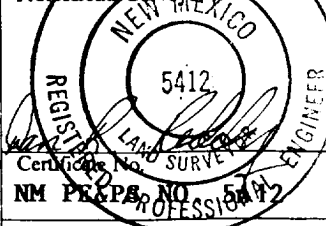
Signature *Judy Dixon*
Printed Name
Judy Dixon
Position
Production Technician
Company
Fortson Oil Company
Date
12/13/93

SURVEYOR CERTIFICATION

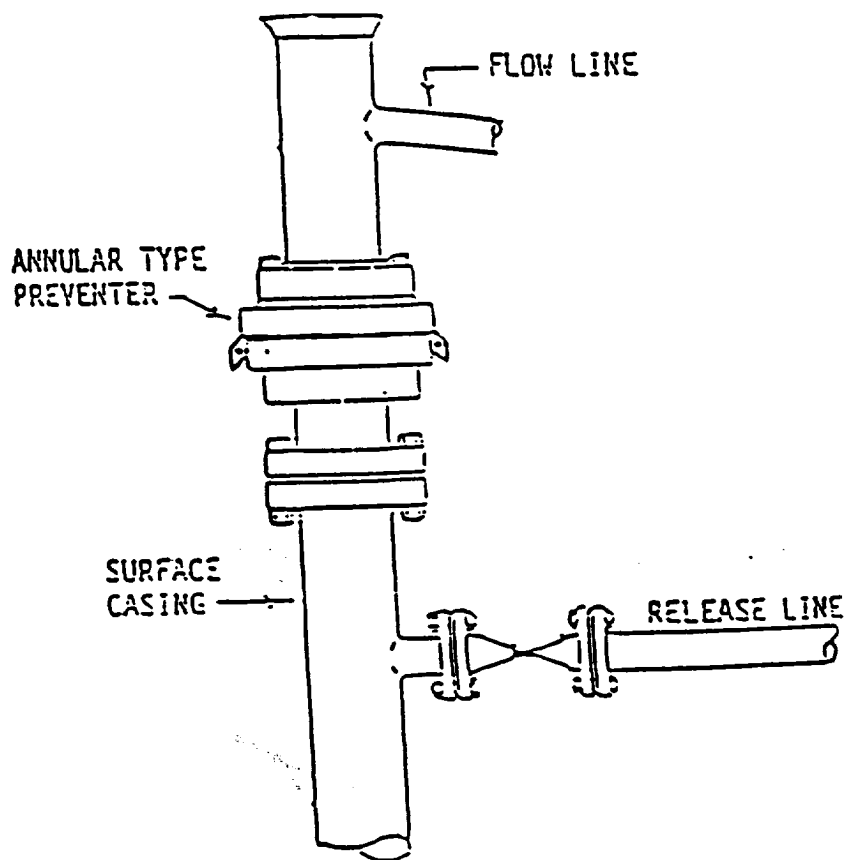
I hereby certify that the well location shown on this plat was plotted from field notes of actual surveys made by me or under my supervision, and that the same is true and correct to the best of my knowledge and belief.

Date Surveyed
OCTOBER 13, 1993

Signature & Seal of
Professional Surveyor



13 3/8 CASING



1500 PSI WORKING PRESSURE

IN USE WHILE DRILLING BELOW
SURFACE CASING

Exhibit I

PROPOSED 3-M BOPE AI CHOKE ARRANGEMENT

