

CISF

RECEIVED  
UNITED STATES  
DEPARTMENT OF THE INTERIOR  
BUREAU OF LAND MANAGEMENTFORM APPROVED  
Budget Bureau No. 1004-0135  
Expires: March 31, 1993Do not use this form for proposals to drill or to deepen or reentry to a different reservoir.  
Use "APPLICATION FOR PERMIT—" for such proposalsCAB  
AREA

SUBMIT IN TRIPLICATE

## 1. Type of Well

☒ Oil Well ☐ Gas Well ☐ Other

## 2. Name of Operator

BASS ENTERPRISES PRODUCTION CO.

## 3. Address and Telephone No.

P.O. BOX 2760, MIDLAND, TEXAS 79702-2760 (915) 683-2277

## 4. Location of Well (Footage, Sec., T., R., M., or Survey Description)

1980' FSL &amp; 660' FWL, SECTION 19, T24S, R31E

## 5. Lease Designation and Serial No.

LC 061705 B

## 6. If Indian, Allottee or Tribe Name

## 7. If Unit or CA, Agreement Designation

POKER LAKE UNIT

## 8. Well Name and No.

POKER LAKE UNIT #86

## 9. API Well No.

30-015-27912

## 10. Field and Pool, or Exploratory Area

POKER LAKE (DELAWARE)

## 11. County or Parish, State

EDDY COUNTY, NEW MEXICO

## 12. CHECK APPROPRIATE BOX(S) TO INDICATE NATURE OF NOTICE, REPORT, OR OTHER DATA

## TYPE OF SUBMISSION

☐ Notice of Intent☒ Subsequent Report☐ Final Abandonment Notice

## TYPE OF ACTION

☐ Abandonment☐ Recompletion☐ Plugging Back☐ Casing Repair☒ Altering Casing☒ Other ALTERING BOPE☐ Change of Plans☐ New Construction☐ Non-Routine Fracturing☐ Water Shut-Off☐ Conversion to Injection☐ Dispose Water

(Note: Report results of multiple completion on Well Completion or Recompletion Report and Log form.)

## 13. Describe Proposed or Completed Operations (Clearly state all pertinent details, and give pertinent dates, including estimated date of starting any proposed work. If well is directionally drilled, give subsurface locations and measured and true vertical depths for all markers and zones pertinent to this work.)

## PROPOSED CHANGES IN CASING DESIGN AND CEMENTING PROGRAM:

SIZE OF HOLE	GRADE	SIZE OF CSG	WEIGHT PER FT	SETTING DEPTH	QTY OF CEMENT
14-3/4"	H-40	11-3/4"	42#	920'	500 SX CIRC TO SURFACE
11"	WC-50	*8-5/8"			950 SX CIRC TO SURFACE

\*THE 8-5/8" CASING MAY NOT BE RUN IF WE ARE SUCCESSFUL ON FOAM DRILLING THIS HOLE.

7-7/8"	K-55	5-1/2"	15.50# & 17.0#	8400'	TIE BACK TO 3900' IF 8-5/8 IS RUN. CIRC TO 700' IF 8-5/8" IS NOT RUN.
--------	------	--------	----------------	-------	---

CHANGES IN BOP: A 3000 PSI WP BOP STACK AS DESCRIBED IN DIAGRAM #1 WILL BE INSTALLED ON THE SURFACE CASING HEAD. THIS WILL BE BASS' MINIMUM BLOWOUT PREVENTER REQUIREMENTS.

## 14. I hereby certify that the foregoing is true and correct

Signed

William R. Darnell

Title

DIVISION DRILLING SUPT

Date 4/17/95

(This space for Federal or State office use)

Approved by

(ORIG. SCD.) JOE G. LARA

Title

PETROLEUM ENGINEER

Date

5/2/95

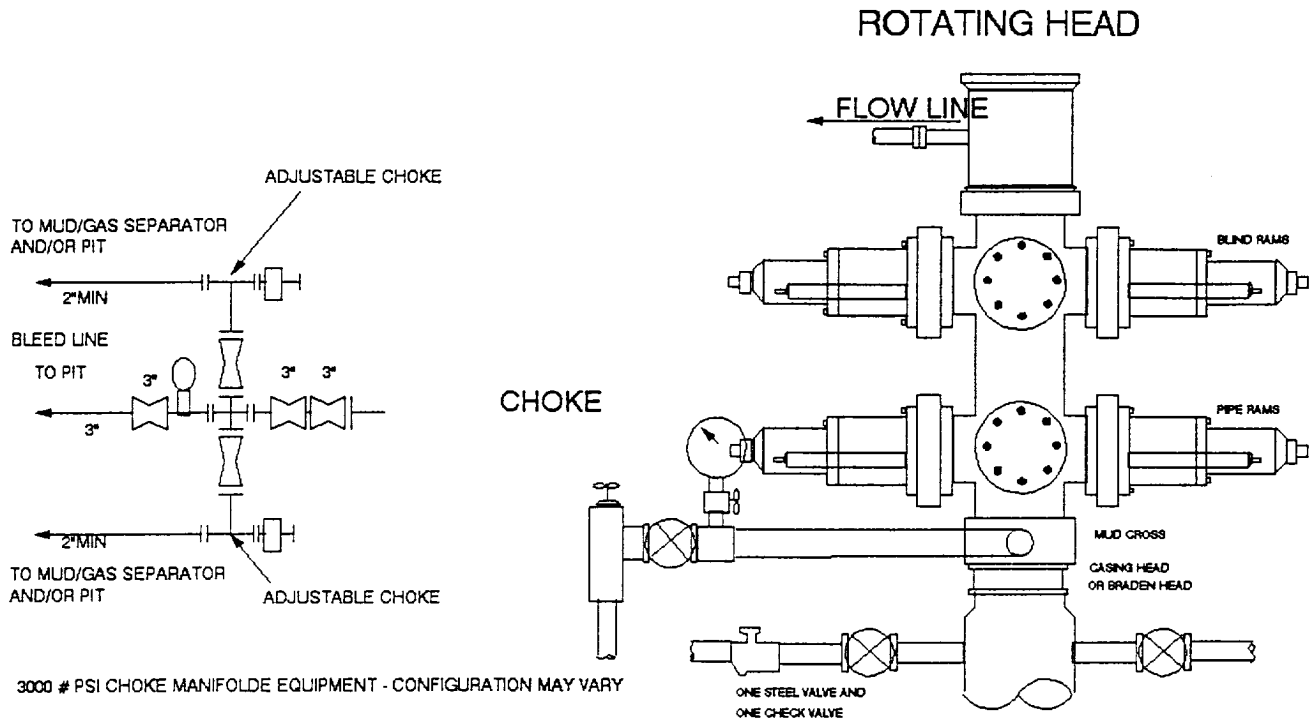
Conditions of approval, if any:

Title 18 U.S.C. Section 1001, makes it a crime for any person knowingly and willfully to make to any department or agency of the United States any false, fictitious or fraudulent statements or representations as to any matter within its jurisdiction.

\*See instruction on Reverse Side

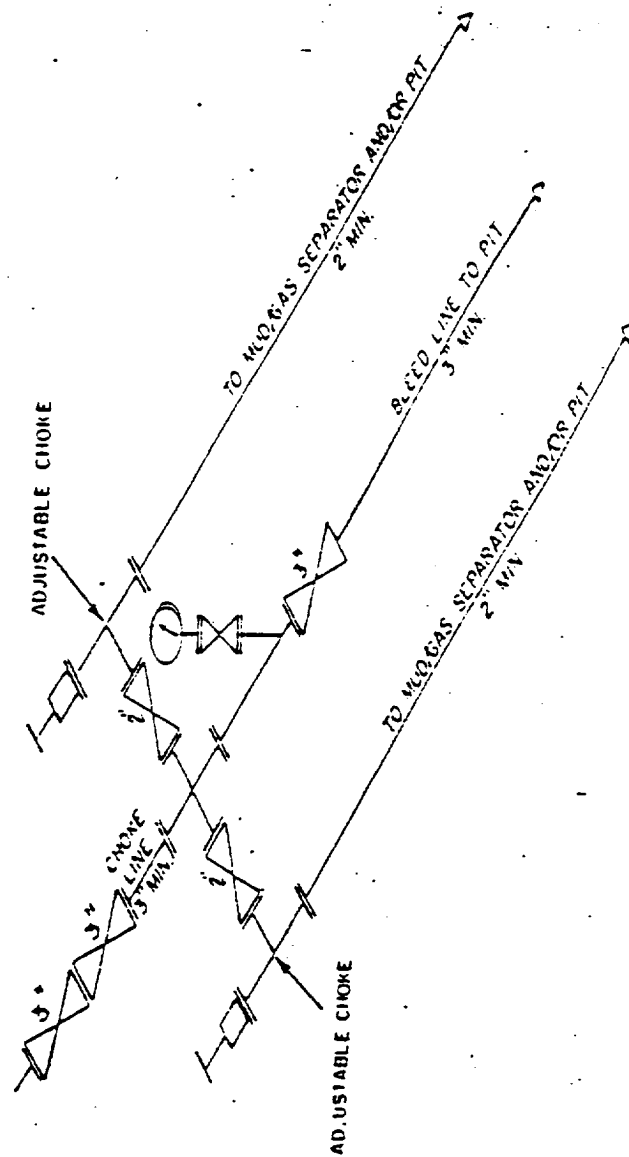
Cert # Z 112 327 681 RMN/FDC

# 3000 PSI WP



## THE FOLLOWING CONSTITUTE MINIMUM BLOWOUT PREVENTER REQUIREMENTS

- A. One double gate blowout preventer with lower rams for pipe and upper rams blind, all hydraulically controlled.
- B. Opening on preventers between rams to be flanged, studded or clamped and at least two inches in diameter.
- C. All connections from operating manifold to preventers to be all steel hose or tube a minimum of one inch in diameter.
- D. The available closing pressure shall be at least 15% in excess of that required with sufficient volume to operate (close, open, and re-close) the preventers.
- E. All connections to and from preventers to have a pressure rating equivalent to that of the BOP's.
- F. Manual controls to be installed before drilling cement plug.
- G. Valve to control flow through drill pipe to be located on rig floor.
- H. All chokes will be adjustable. Choke spool may be used between rams.



3M CHOKES MANIFOLD EQUIPMENT — CONFIGURATION MAY VARY