

UNITED STATES
DEPARTMENT OF THE INTERIOR
BUREAU OF LAND MANAGEMENT

APPLICATION FOR PERMIT TO DRILL OR DEEPEN

RECEIVED

1a. TYPE OF WORK

DRILL ☒

DEEPEN ☐

SEP 09 1996

b. TYPE OF WELL

Oil Well ☒

Gas Well ☐

Other

Single Zone

OIL CON. DIV.

DIST. 2

2. Name of Operator

Bass Enterprises Production Company

3. Address and Telephone No.

P.O. Box 2760, Midland, TX 79702 (915) 683-2277

4. Location of Well (Report location clearly and in accordance with any State requirements.*)

At Surface

1980' FWL & 1980' FSL, Section 25, T24S, R30E

At proposed prod. zone

Unit K

14. Distance in miles and direction from nearest town or Post Office*

15.2 miles SE from Malaga, NM

15. Distance from proposed*

Location to nearest

Property or lease line, ft. 660' from PA

(Also to nearest drlg. unit line, if any)

16. No. of acres in Lease

2495.41

17. No. of Acres assigned to this Well

40

18. Distance from proposed location*

to nearest well, drilling, completed,

or applied for, on this Lease, ft.

1320

19. Proposed Depth

8300'

20. Rotary or Cable Tools

Rotary

21. Elevations (Show whether DF, RT, GR, etc.)

3443' GR

22. Approx. date work will start*

Upon approval

23. PROPOSED CASING AND CEMENTING PROGRAM

SIZE OF HOLE	GRADE, SIZE OF CASING	WEIGHT PER FOOT	SETTING DEPTH	QUANTITY OF CEMENT
**14 3/4"	11 3/4" WC-40	42#	800'	465 sx (Circ to surface)
***11"	8 5/8" WC-50	32#	4100'	890 sx (Circ to surface)
**** 7 7/8"	5 1/2" K-55	15.5#	8300'	615 sx (Tie back to 3850')

* Previously assigned in June 1994.

** Surface casing to be set +/-100' above the salt in the Rustler Anhydrite.

***Intermediate casing to be set in the top of the Lamar Lime.

****DV Tool to be set at +/-6000', cement to tie back to 3850'.

This APD is a re-submittal of a previously approved APD for Poker Lake Unit #106. Originally, an APD was signed and approved on April 18, 1994 and an API number was assigned. Without action, the permit was allowed to expire per the BLM's Oct. 24, 1995 letter. Bass wishes to re-permit the same location using the same assigned API number. Drilling procedure, BOP diagram, anticipated tops and surface use plans attached. Also, attached is an archaeological survey dated March 11, 1994.

NOTE: This location is outside of R-111 Potash Areas.

IN ABOVE SPACE DESCRIBE PROPOSED PROGRAM: If proposal is to deepen, give data on present productive zone and proposed new productive zone. If proposal is to drill or deepen directionally, give pertinent data on subsurface locations and measured and true vertical depths. Give blowout preventer program, if any.

24.

Signed William R. Dannels W. R. Dannels

Title Division Drilling Supt.

Date Aug. 1, 1996

(This space for Federal or State office use)

Permit No. _____

Approval Date _____

Application approval does not warrant or certify that the applicant holds legal or equitable title to those rights in the subject lease which would entitle the applicant to conduct operations thereon. CONDITIONS OF APPROVAL, IF ANY:

Approved by

ORIG. SIGNED RICHARD L. MANUS

Title

Date

SEP 6 1996

*See Instruction on Reverse Side

Title 18 U.S.C., Section 1001, makes it a crime for any person knowingly and willfully to make to any department or agency of the United States any false, fictitious or fraudulent statements or representations as to any matter within its jurisdiction.

Submit to Appropriate
District Office
State Lease - 4 copies
Fee Lease - 3 copies

State of New Mexico
Energy, Minerals and Natural Resources Department

Form C-102
Revised 1-1-90

OIL CONSERVATION DIVISION

P.O. Box 2088
Santa Fe, New Mexico 87504-2088

DISTRICT I

P.O. Box 1980, Hobbs, NM 88240

DISTRICT II

P.O. Drawer DD, Artesia, NM 88210

DISTRICT III

1000 Rio Brazos Rd., Aztec, NM 87410

WELL LOCATION AND ACREAGE DEDICATION PLAT

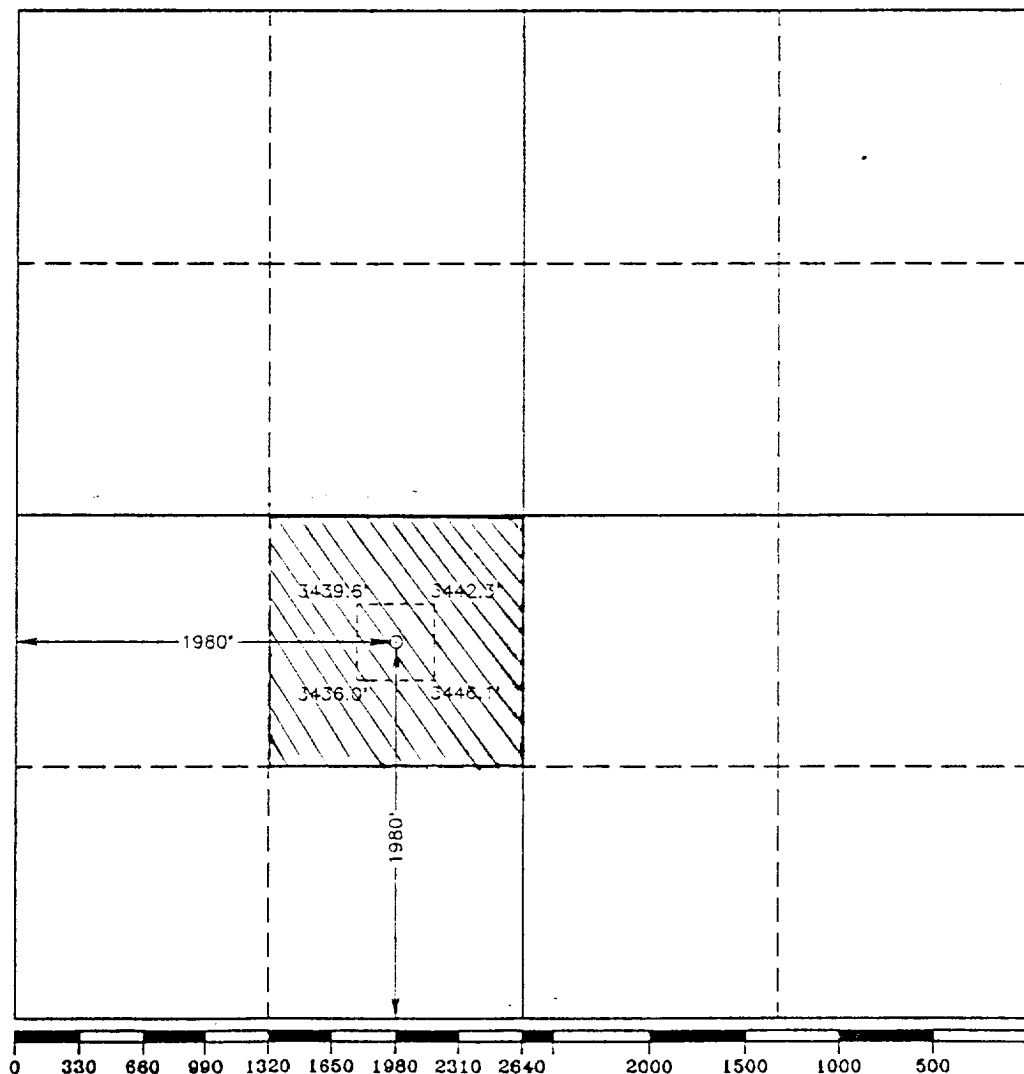
All Distances must be from the outer boundaries of the section

Operator BASS ENTERPRISES PROD. CO.		Lease POKER LAKE UNIT		Well No. 106	
Unit Letter K	Section 25	Township 24 SOUTH	Range 30 EAST	County EDDY	
Actual Footage Location of Well: 1980 feet from the SOUTH line and 1980 feet from the WEST line					
Ground Level Elev. 3443'	Producing Formation Delaware		Pool Poker Lake (Delaware)	Dedicated Acreage: 40 Acres	

- Outline the acreage dedicated to the subject well by colored pencil or hatchure marks on the plat below.
- If more than one lease is dedicated to the well, outline each and identify the ownership thereof (both as to working interest and royalty).
- If more than one lease of different ownership is dedicated to the well, have the interest of all owners been consolidated by communitization, unitization, force-pooling, etc.?
☐ Yes ☐ No If answer is "yes" type of consolidation _____

If answer is "no" list of owners and tract descriptions which have actually been consolidated. (Use reverse side of this form necessary.)

No allowable will be assigned to the well unit all interests have been consolidated (by communitization, unitization, forced-pooling, otherwise) or until a non-standard unit, eliminating such interest, has been approved by the Division.



OPERATOR CERTIFICATION

I hereby certify the information contained herein is true and complete to the best of my knowledge and belief.

Signature
William R. Dannels

Printed Name
William R. Dannels

Position
Division Drilling Supt.

Company
Bass Enterprises Prod. Co.

Date
3/24/94

SURVEYOR CERTIFICATION

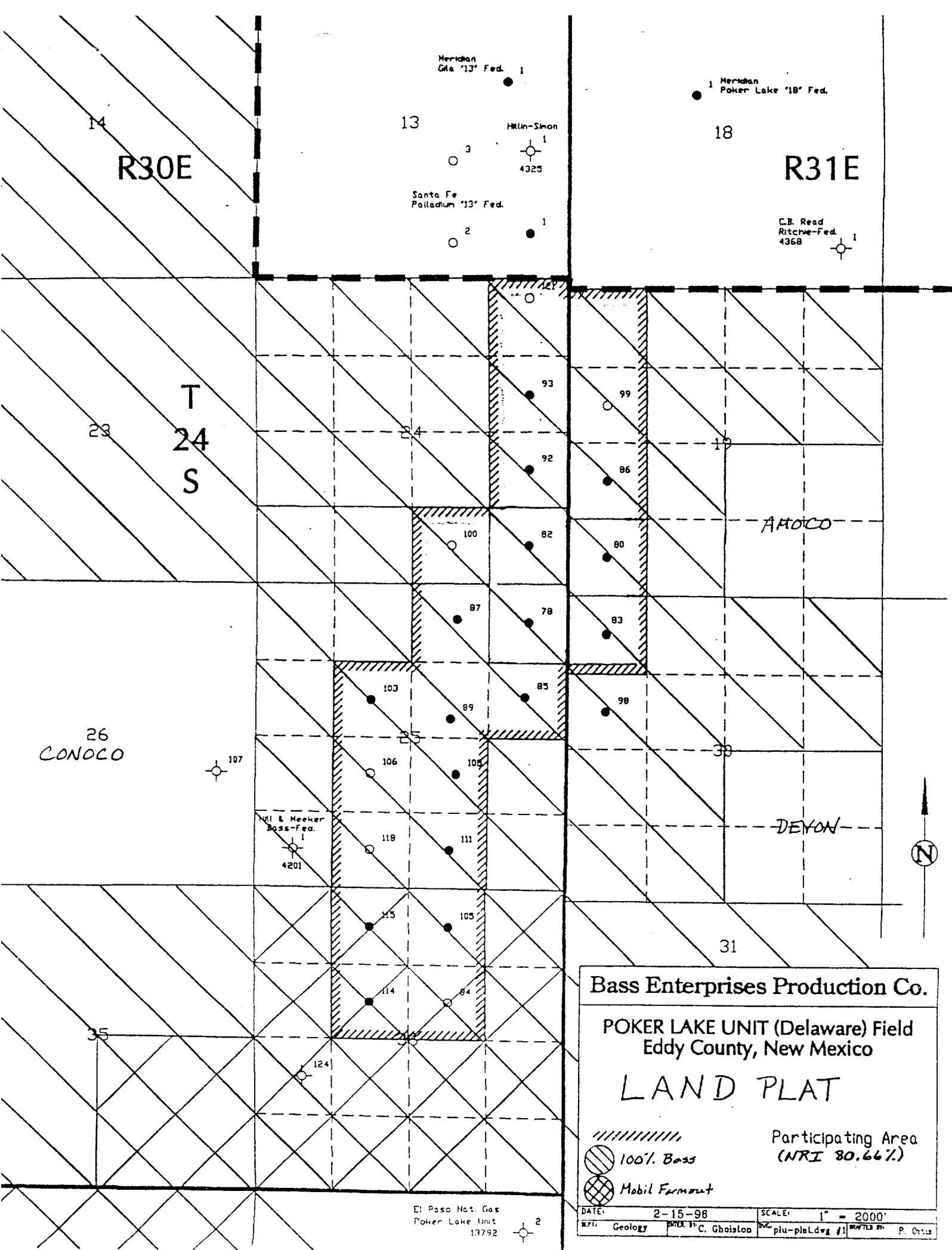
I hereby certify that the well location shown on this plat was plotted from field notes of actual surveys made by me or under my supervision, and that the same is true and correct to the best of my knowledge and belief.

Date Surveyed
FEBRUARY 23, 1994

Signature & Seal of
Professional Surveyor

NEW MEXICO
7977
GARY L. JONES, 7977
Certificate No. 675
J. EIDSON, 3219

94-11-0344



R30E

R31E

T
24
S

26
CONOCO

AMOCO

DEVON

Bass Enterprises Production Co.

POKER LAKE UNIT (Delaware) Field
Eddy County, New Mexico

LAND PLAT

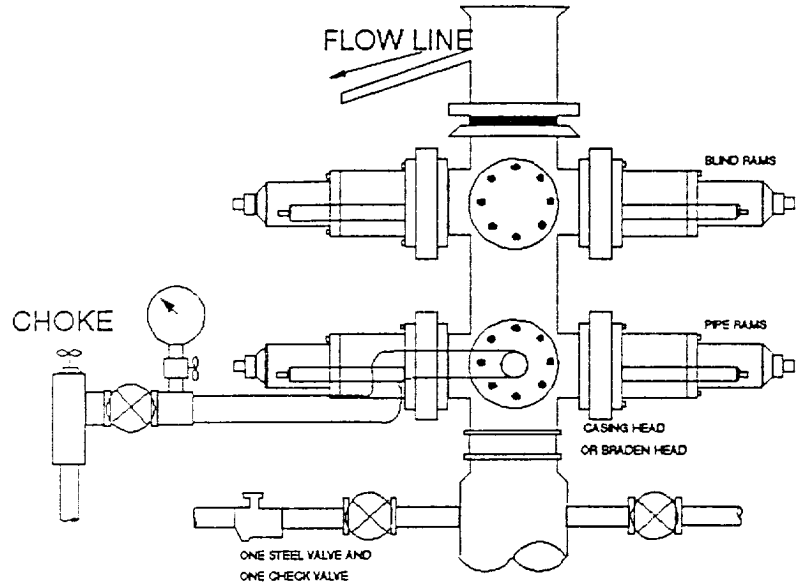
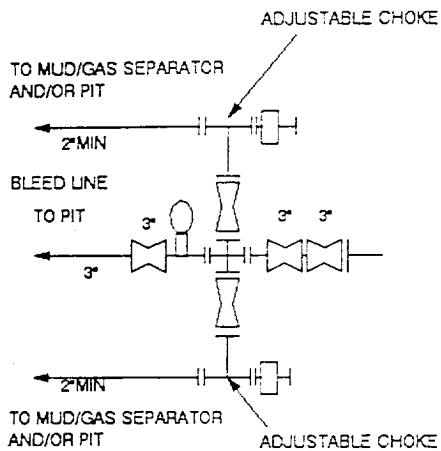
Participating Area
(NRI 80.66%)

- 100% Bass
- Mobil Farmout

DATE	2-15-98	SCALE	1" = 2000'
WFL	Geology	WFL	C. Ghoislon
WFL	plus-plat.dwg #1	WFL	P. Ortiz

E! Paso Nat. Gas
Poker Lake Unit
13792

3000 PSI WP



THE FOLLOWING CONSTITUTE MINIMUM BLOWOUT PREVENTER REQUIREMENTS

- A. One double gate blowout preventer with lower rams for pipe and upper rams blind, all hydraulically controlled.
- B. Opening on preventers between rams to be flanged, studded or clamped and at least two inches in diameter.
- C. All connections from operating manifold to preventers to be all steel hose or tube a minimum of one inch in diameter.
- D. The available closing pressure shall be at least 15% in excess of that required with sufficient volume to operate (close, open, and re-close) the preventers.
- E. All connections to and from preventers to have a pressure rating equivalent to that of the BOP's.
- F. Manual controls to be installed before drilling cement plug.
- G. Valve to control flow through drill pipe to be located on rig floor.
- H. All chokes will be adjustable. Choke spool may be used between rams.