

NM OIL AND GAS COMMISSION
DRAWER DD
ARTESIA, NEW MEXICO
DEPARTMENT OF THE INTERIOR
BUREAU OF LAND MANAGEMENT

SUBMIT IN TRIPLICATE*
RECEIVED
(Other instructions on reverse side)

Form approved.
Budget Bureau No. 1004-0136
Expires: December 31, 1991

c/sf

MAY 13 '94

APPLICATION FOR PERMIT TO DRILL OR DEEPEN

1a. TYPE OF WORK

DRILL ☒

DEEPEN ☐

O. C. D.

ARTESIA, OFFICE

b. TYPE OF WELL

OIL WELL ☒

GAS WELL ☐

OTHER

SINGLE ZONE ☒

MULTIPLE ZONE ☐

2. NAME OF OPERATOR

Bass Enterprises Production Company ✓

1801

3. ADDRESS AND TELEPHONE NO.

P.O. Box 2760, Midland, TX 79702 (915) 683-2277

4. LOCATION OF WELL (Report location clearly and in accordance with any State requirements.)

At surface 660' FSL & 1980' FEL, Section 24, T-24-S, R-30-E

At proposed prod. zone

5. LEASE DESIGNATION AND SERIAL NO.

NM 030453

6. IF INDIAN, ALLOTTEE OR TRIBE NAME

7. UNIT AGREEMENT NAME

Poker Lake Unit

8. FARMOR LEASE NAME, WELL NO.

Poker Lake Unit #100

9. API WELL NO.

30-015-27961

10. FIELD AND POOL, OR WILDCAT

Poker Lake (Delaware), SW

11. SEC. T. R. M., OR BLK. AND SURVEY OR AREA

Section 24, T-24-S, R-30-E

12. COUNTY OR PARISH

Eddy

13. STATE

New Mexico

14. DISTANCE IN MILES AND DIRECTION FROM NEAREST TOWN OR POST OFFICE*

14 miles east from Malaga, New Mexico

15. DISTANCE FROM PROPOSED*

LOCATION TO NEAREST PROPERTY OR LEASE LINE, FT. (Also to nearest drig. unit line, if any) 660

16. NO. OF ACRES IN LEASE

640

17. NO. OF ACRES ASSIGNED TO THIS WELL

40

18. DISTANCE FROM PROPOSED LOCATION*

TO NEAREST WELL, DRILLING COMPLETED, OR APPLIED FOR, ON THIS LEASE, FT. 1320

19. PROPOSED DEPTH

8300'

20. ROTARY OR CABLE TOOLS

Rotary

21. ELEVATIONS (Show whether DF, RT, GR, etc.)

3442' - GR

22. APPROX. DATE WORK WILL START*

Upon Approval

23.

PROPOSED CASING AND CEMENTING PROGRAM

SIZE OF HOLE	GRADE, SIZE OF CASING	WEIGHT PER FOOT	SETTING DEPTH	QUANTITY OF CEMENT
*14-3/4"	WC-40 11-3/4"	42#	940'	520 SX Circ. to surface
**11"	WC-50 8-5/8"	32#	4050'	755 SX Circ. to surface
*** 7-7/8"	K-55 5-1/2"	15.5#	8300'	615 SX (Tie back to int. csg @ 3850')

*Surface casing to be set + 100' above salts in the Rustler Anhydrite.

**Intermediate casing to be set in the top of the Lamar Lime.

***D.V. Tool to be set @ +6000'; Cement to tie back to 3850'.

Post ID-1
5-16-94

New Loc & API

Drilling procedure, BOP diagram, anticipated tops and surface use plans attached.

Note: This well is outside of R-111 Potash Areas.

CERTIFIED #P 237 023 593-BGH:PGC

IN ABOVE SPACE DESCRIBE PROPOSED PROGRAM: If proposal is to deepen, give data on present productive zone and proposed new productive zone. If proposal is to drill or deepen directionally, give pertinent data on subsurface locations and measured and true vertical depths. Give blowout preventer program, if any.

24.

SIGNED

William R. Hensch

TITLE Division Dirg. Supt.

DATE

4-8-94

(This space for Federal or State office use)

PERMIT NO.

APPROVAL DATE

APPROVAL SUBJECT TO
GENERAL REQUIREMENTS AND
SPECIAL STIPULATIONS
ATTACHED

Application approval does not warrant or certify that the applicant holds legal or equitable title to those rights in the subject lease which would entitle the applicant to a share of the production thereon.

CONDITIONS OF APPROVAL, IF ANY:

APPROVED BY

S/ Gary Bowers

TITLE

AREA MANAGER

DATE

5-11-94

*See Instructions On Reverse Side

State of New Mexico
Energy, Minerals and Natural Resources Department

Form C-102
Revised 1-1-89

OIL CONSERVATION DIVISION

P.O. Box 2088
Santa Fe, New Mexico 87504-2088

DISTRICT I

P.O. Box 1980, Hobbs, NM 88240

DISTRICT II

P.O. Drawer DD, Artesia, NM 88210

DISTRICT III

1008 Elc Brazos Rd., Artesia, NM 87410

WELL LOCATION AND ACREAGE DEDICATION PLAT

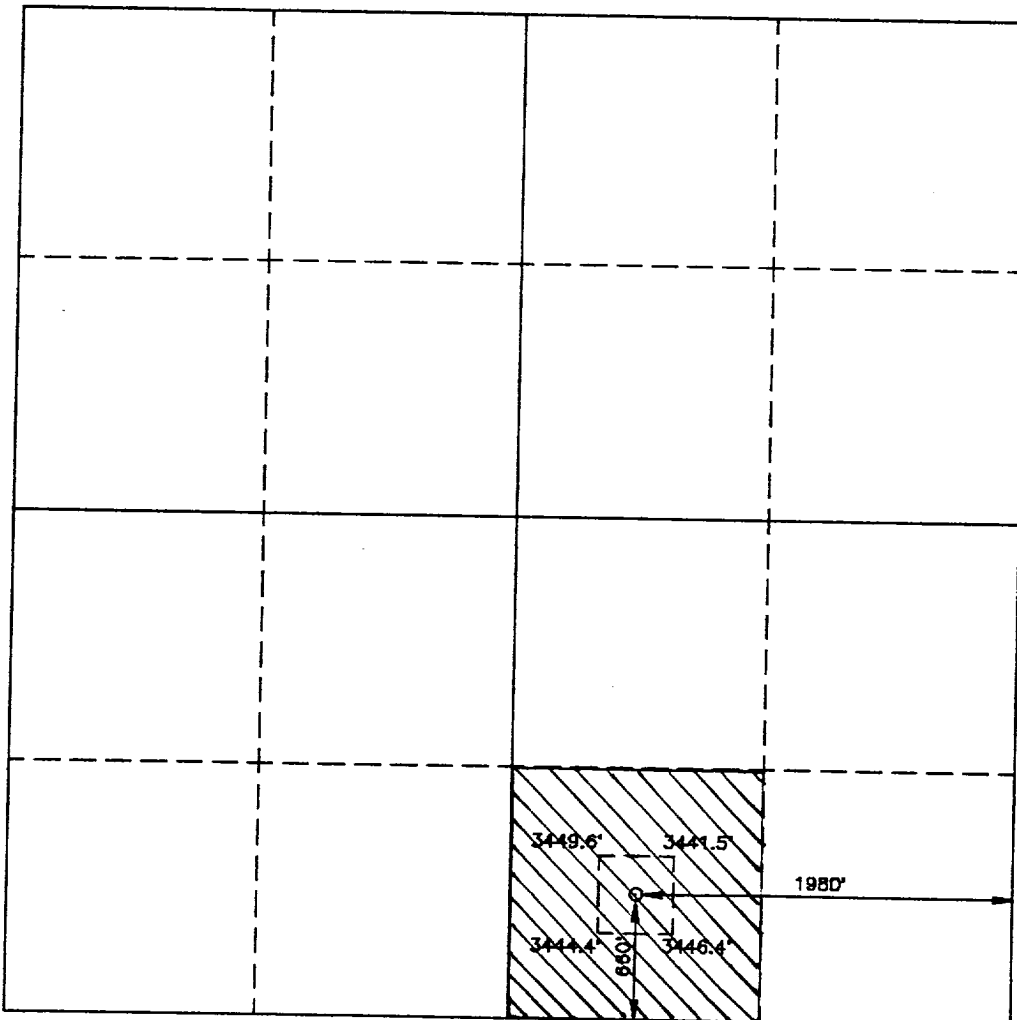
All Distances must be from the outer boundaries of the section

Operator BASS ENTERPRISES PRODUCTION COMPANY			Lease POKER LAKE UNIT		Well No. 100
Unit Letter O	Section 24	Township 24 SOUTH	Range 30 EAST	County EDDY	
Actual Footage Location of Well: 660 feet from the SOUTH line and 1980 feet from the EAST line					
Ground Level Elev. 3442'	Producing Formation Delaware		Pool Poker Lake (Delaware), SW		Dedicated Acreage: 40 Acres

1. Outline the acreage dedicated to the subject well by colored pencil or hatchure marks on the plat below.
2. If more than one lease is dedicated to the well, outline each and identify the ownership thereof (both as to working interest and royalty).
3. If more than one lease of different ownership is dedicated to the well, have the interest of all owners been consolidated by communitization, unitization, force-pooling, etc.?
☐ Yes ☐ No If answer is "yes" type of consolidation _____

If answer is "no" list of owners and tract descriptions which have actually been consolidated. (Use reverse side of this form necessary.)

No allowable will be assigned to this well unit all interests have been consolidated (by communitization, unitization, forced-pooling, otherwise) or until a non-standard unit, eliminating such interest, has been approved by the Division.



OPERATOR CERTIFICATION

I hereby certify the the information contained herein is true and complete to the best of my knowledge and belief.

Signature
William R. Dannels
Printed Name
William R. Dannels
Position
Division Dir. Supt.
Company
Bass Enterprises Prod. Co.
Date
4-8-94

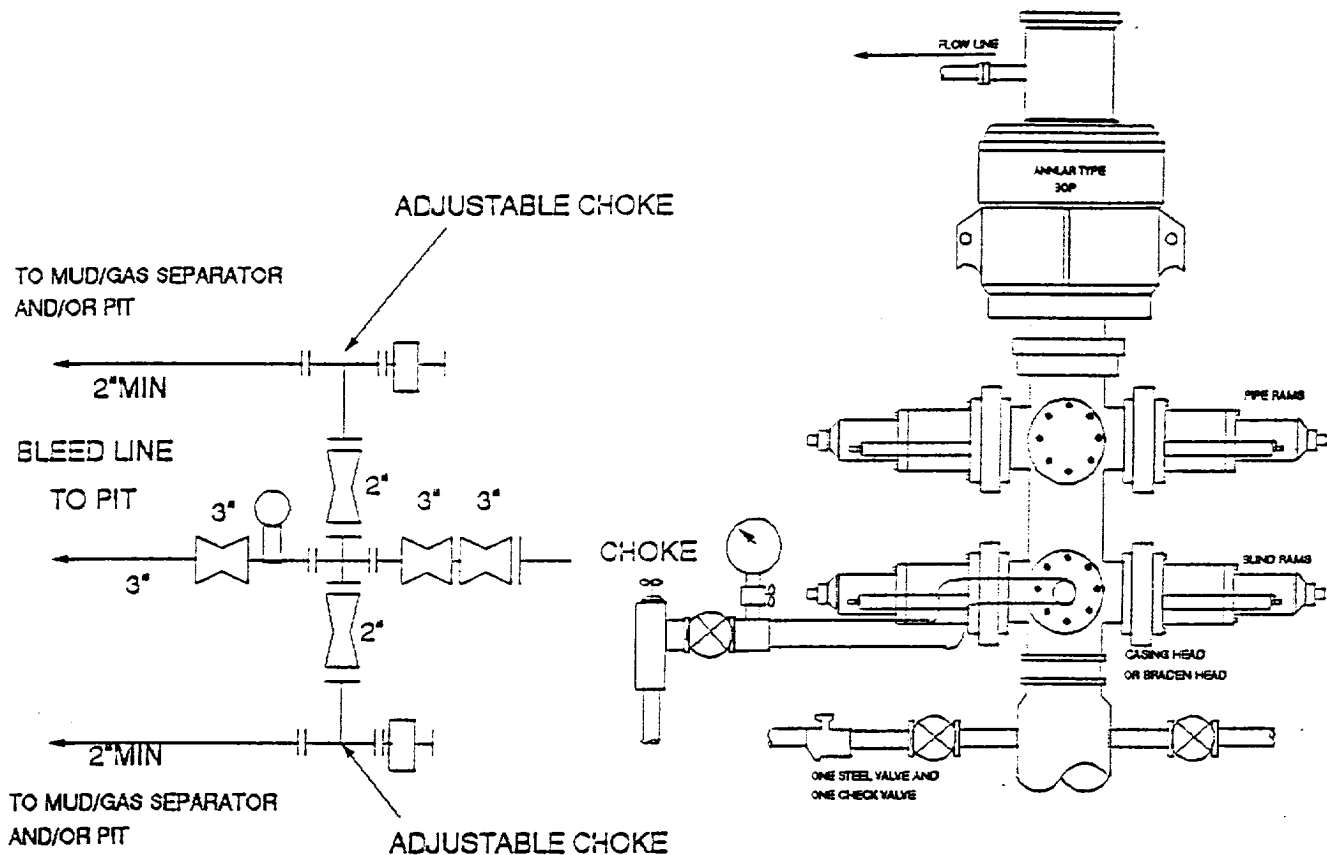
SURVEYOR CERTIFICATION

I hereby certify that the well location shown on this plat was plotted from field notes of actual surveys made by me or under my supervision, and that the same is true and correct to the best of my knowledge and belief.

Date Surveyed
MARCH 14, 1994
Signature & Seal of
Professional Surveyor
7977
Certificate No. JOHN W. WEST, 676
RONALD J. EIDSON, 3239
GARY L. JONES, 7977

94-11-0374

3000 PSI WP



THE FOLLOWING CONSTITUTE MINIMUM BLOWOUT PREVENTER REQUIREMENTS

- A. One double gate blowout preventer with lower rams for pipe and upper rams blind, all hydraulically controlled.
- B. Opening on preventers between rams to be flanged, studded or clamped and at least two inches in diameter.
- C. All connections from operating manifold to preventers to be all steel hose or tube a minimum of one inch in diameter.
- D. The available closing pressure shall be at least 15% in excess of that required with sufficient volume to operate (close, open, and re-close) the preventers.
- E. All connections to and from preventers to have a pressure rating equivalent to that of the BOP's.
- F. Manual controls to be installed before drilling cement plug.
- G. Valve to control flow through drill pipe to be located on rig floor.
- H. Choke may be either positive or adjustable. Choke spool may be used between rams.