

UNITED STATES
DEPARTMENT OF THE INTERIOR
BUREAU OF LAND MANAGEMENT

APPLICATION FOR PERMIT TO DRILL OR DEEPEN

1a. TYPE OF WORK

DRILL ☒

DEEPEN ☐

b. TYPE OF WELL

OIL
WELL ☐

GAS
WELL ☒

OTHER

SINGLE
ZONE ☒

MULTIPLE
ZONE ☐

2. NAME OF OPERATOR

BASS ENTERPRISES PRODUCTION CO.

3. ADDRESS AND TELEPHONE NO.

P. O. BOX 2760, MIDLAND, TX 79702 915-683-2277

4. LOCATION OF WELL (Report location clearly and in accordance with any State requirements.)
At surface

1980' FSL & 1980' FWL, SECTION 22, T24S, R31E
At proposed prod. zone

14. DISTANCE IN MILES AND DIRECTION FROM NEAREST TOWN OR POST OFFICE*

28 MILES SE OF CARLSBAD, NEW MEXICO

15. DISTANCE FROM PROPOSED*

LOCATION TO NEAREST
PROPERTY OR LEASE LINE, FT.
(Also to nearest drlg. unit line, if any)

660'

16. NO. OF ACRES IN LEASE

1845.12

17. NO. OF ACRES ASSIGNED
TO THIS WELL

320

18. DISTANCE FROM PROPOSED LOCATION*

TO NEAREST WELL, DRILLING, COMPLETED,
OR APPLIED FOR, ON THIS LEASE, FT.

2640'

19. PROPOSED DEPTH

15,400'

20. ROTARY OR CABLE TOOLS

ROTARY

21. ELEVATIONS (Show whether DF, RT, GR, etc.)

3523' GR

22. APPROX. DATE WORK WILL START*

UPON APPROVAL

23. PROPOSED CASING AND CEMENTING PROGRAM

SIZE OF HOLE	GRADE SIZE OF CASING	WEIGHT PER FOOT	SETTING DEPTH	QUANTITY OF CEMENT
*26"	20" H-40	94#	840'	1730 SX CIRC TO SURFACE
**17-1/2"	13-3/8" N-80	68#	4350'	3500 SX CIRC TO SURFACE
***12-1/4"	9-5/8" P-110	53.50#	12,000'	2920 SX TOP OF CMT 4150' DV TOOL 8300'
**** 8-1/2"	7-5/8" P-110	39#	14,800'	385 SX TOP OF LINER 11,700'
***** 6-1/2"	5-1/2" S95	20#	15,400'	70 SX TOP OF LINER 14,500'

- * SURFACE CASING TO BE SET $\pm 100'$ ABOVE THE SALT IN RUSTLER ANHYDRITE.
** INTERMEDIATE CASING TO BE SET JUST ABOVE THE TOP OF THE LAMAR LIME.
*** 2ND INTERMEDIATE CASING TO BE SET IN WOLFCAMP T 12,000'
**** 7-5/8" LINER ABOVE THE MIDDLE MORROW. TIE BACK INTO 9-5/8" CASING.
***** 5-1/2" LINER TO BE SET AT TD. TIEBACK INTO 7-5/8" LINER.

DRILLING PROCEDURE, BOP DIAGRAM, ANTICIPATED TOPS AND SURFACE PLANS ATTACHED

CERTIFIED #Z 112 327 675
RMN/FDC 4/13/95

OIL CON. DIV.
DIST. 2

IN ABOVE SPACE DESCRIBE PROPOSED PROGRAM: If proposal is to deepen, give data on present productive zone and proposed new productive zone. If proposal is to drill or deepen directionally, give pertinent data on subsurface locations and measured and true vertical depths. Give blowout preventer program, if any.

24.

SIGNED William R. Hanneh TITLE DIVISION DRILLING SUPT. DATE 4/13/95

(This space for Federal or State office use)

PERMIT NO. _____ APPROVAL DATE _____
APPROVAL SUBJECT TO
GENERAL REQUIREMENTS AND
SPECIAL STIPULATIONS
ATTACHED

Application approval does not warrant or certify that the applicant holds legal or equitable title to those rights in the subject lease which would enable the applicant to develop operations thereon.

CONDITIONS OF APPROVAL, IF ANY:

APPROVED BY Timothy P. O'Brien TITLE Acting AREA MANAGER DATE 5-19-95

*See Instructions On Reverse Side

ST I
x 1980, Hobbs, NM 88240

DISTRICT II
J. Drawer DD, Artesia, NM 88210

DISTRICT III
1000 Rio Brazos Rd., Aztec, NM 87410

State of New Mexico

Energy, Minerals and Natural Resources Department

Form C-102

Revised February 10, 1984

Instruction on back
Submit to Appropriate District Office

State Lease - 4 Copies
Fee Lease - 3 Copies

OIL CONSERVATION DIVISION

P.O. Box 2088

Santa Fe, New Mexico 87504-2088

☐ AMENDED REPORT

WELL LOCATION AND ACREAGE DEDICATION PLAT

API Number 30-015-28526	Pool Code 84800	Pool Name MORROW S. Sand Dunes; Lower Penn (GAS)
Property Code	Property Name POKER LAKE UNIT	Well Number 123
OGRID No.	Operator Name BASS ENTERPRISES PRODUCTION CO.	Elevation 3523

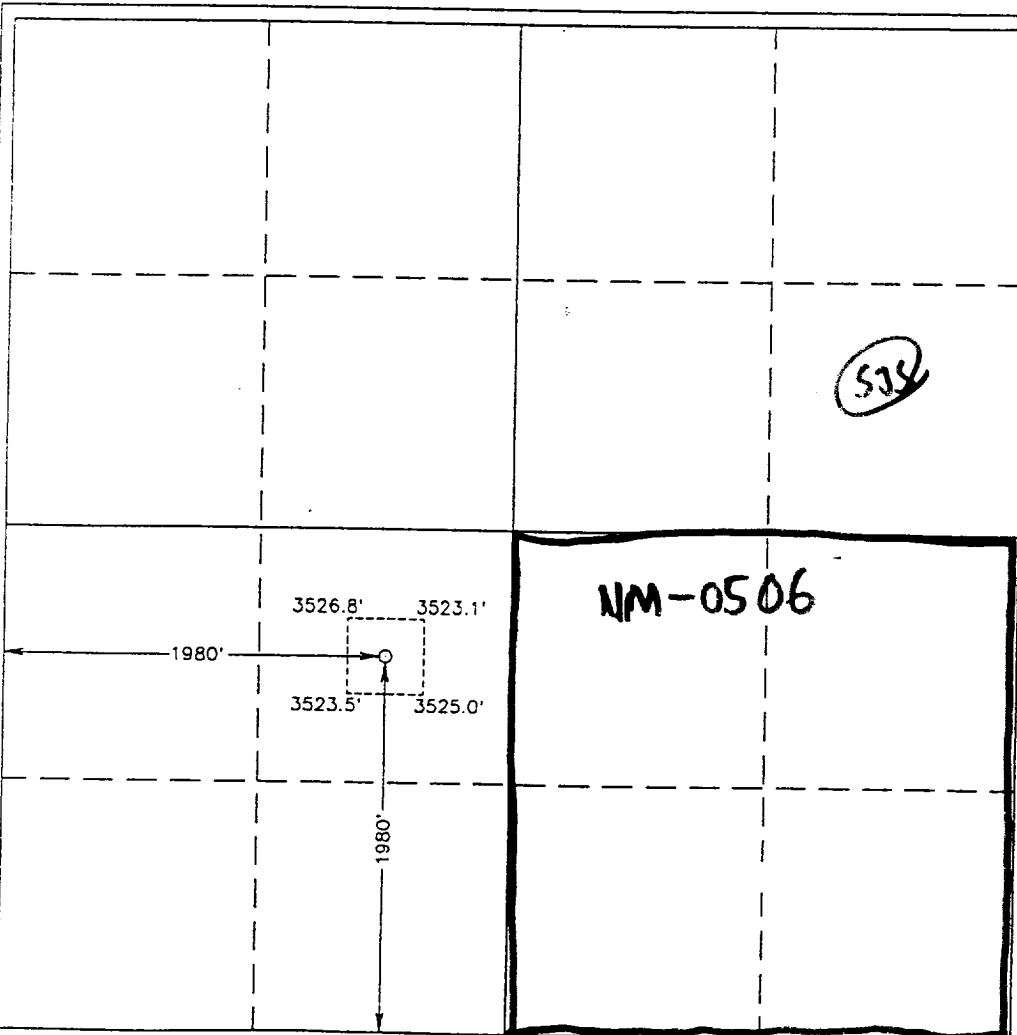
Surface Location

UL or lot No.	Section	Township	Range	Lot Idn	Feet from the	North/South line	Feet from the	East/West line	County
K	22	24 S	31 E		1980	SOUTH	1980	WEST	EDDY

Bottom Hole Location If Different From Surface

UL or lot No.	Section	Township	Range	Lot Idn	Feet from the	North/South line	Feet from the	East/West line	County
Dedicated Acres 320	Joint or Infill	Consolidation Code	Order No.						

NO ALLOWABLE WILL BE ASSIGNED TO THIS COMPLETION UNTIL ALL INTERESTS HAVE BEEN CONSOLIDATED
OR A NON-STANDARD UNIT HAS BEEN APPROVED BY THE DIVISION



OPERATOR CERTIFICATION

I hereby certify the the information
contained herein is true and complete to the
best of my knowledge and belief.

William R. Dannels
Signature

WILLIAM R. DANNELS
Printed Name

DIVISION DRILLING SUPT
Title

4/17/95
Date

SURVEYOR CERTIFICATION

I hereby certify that the well location shown
on this plat was plotted from field notes of
actual surveys made by me or under my
supervision, and that the same is true and
correct to the best of my belief.

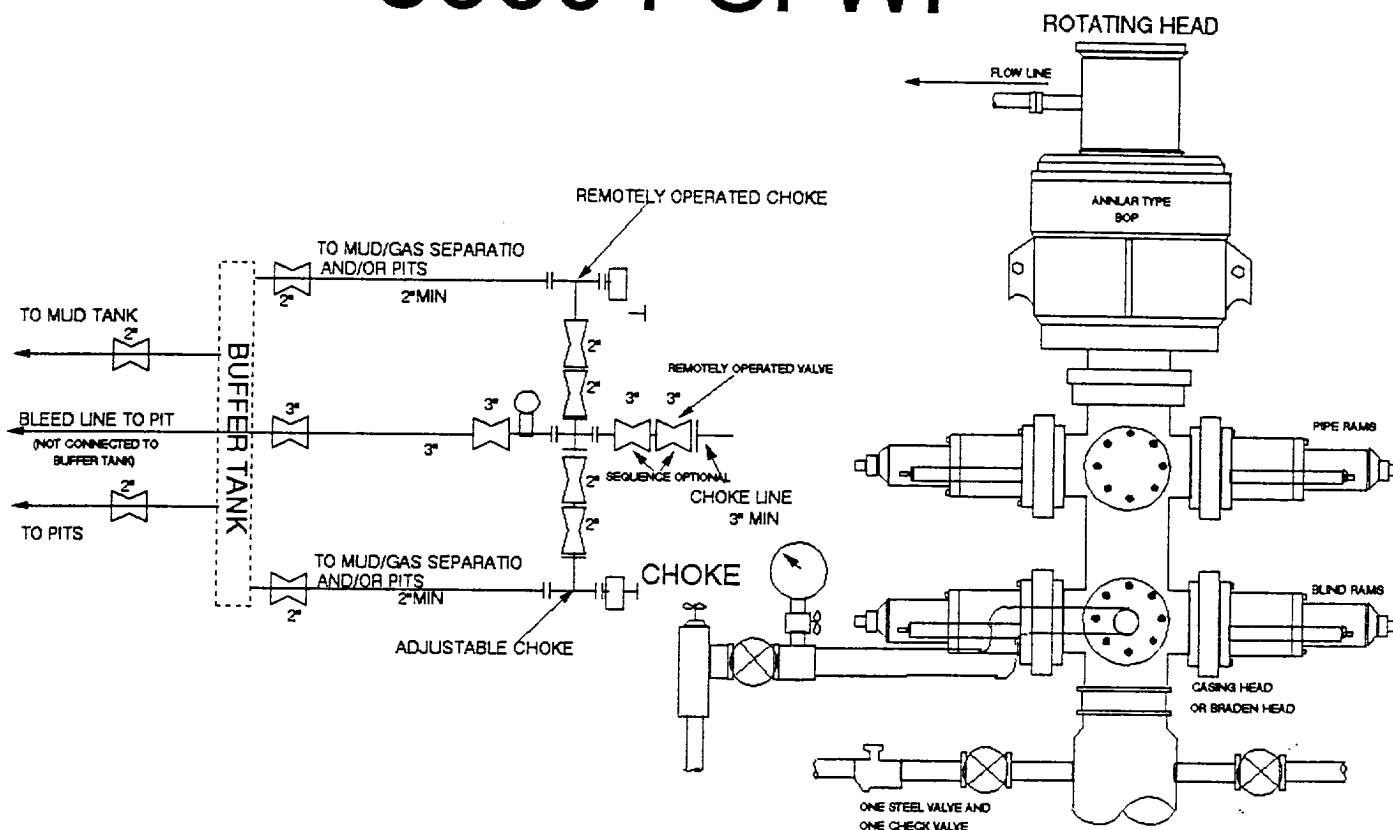
APRIL 4, 1995

Date Surveyed
Signature & Seal of
Professional Surveyor

John W. West
NEW MEXICO
SW.O. Num. 95-151-0513

Certificate No. JOHN W. WEST 676
PROFESSOR RONALD J. EIDSON 3239
GARY EIDSON 12641

5000 PSI WP

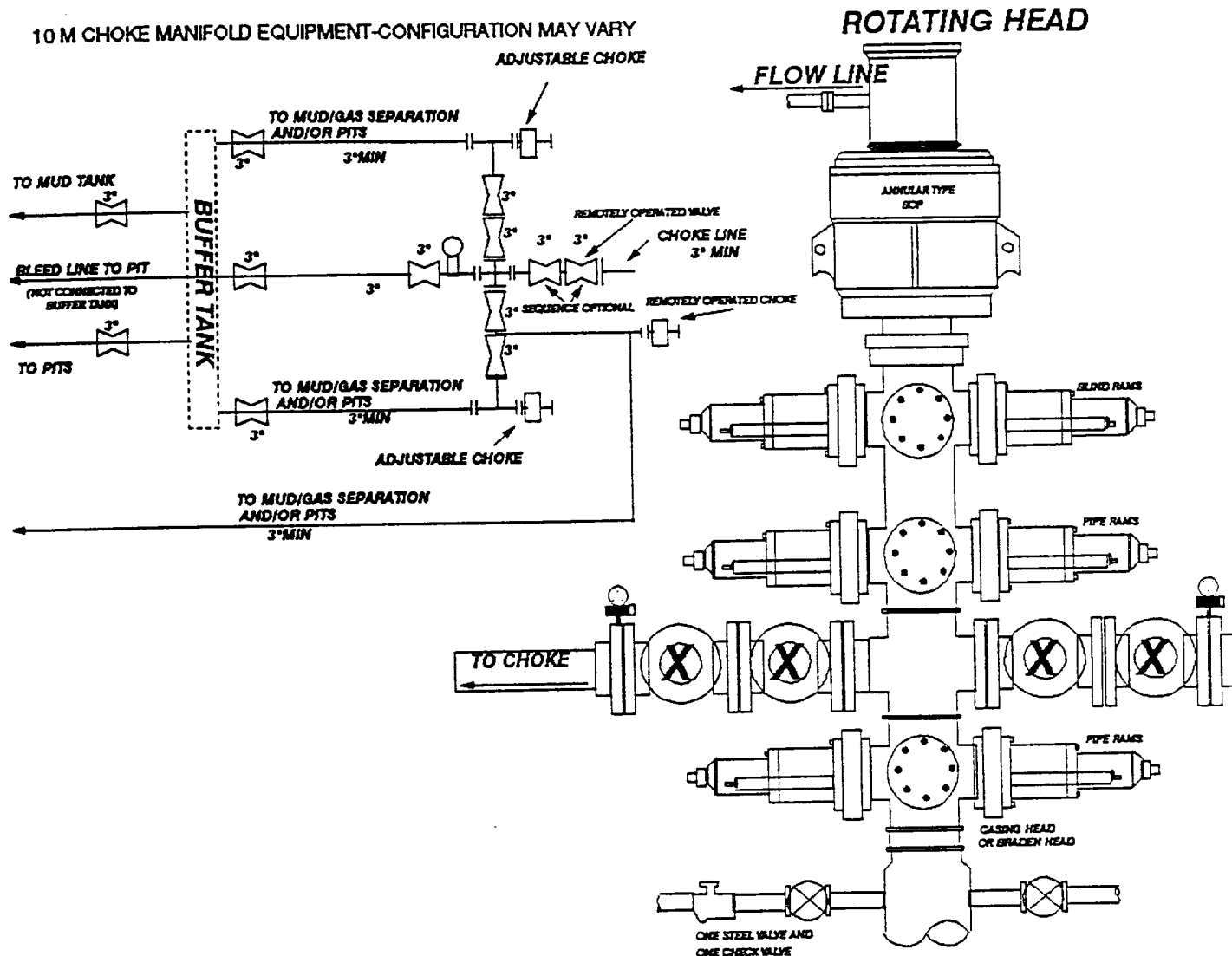


THE FOLLOWING CONSTITUTE MINIMUM BLOWOUT PREVENTER REQUIREMENTS

- A. One double gate blowout preventer with lower rams for pipe and upper rams blind, all hydraulically controlled.
- B. Opening on preventers between rams to be flanged, studded or clamped and at least two inches in diameter.
- C. All connections from operating manifold to preventers to be all steel hose or tube a minimum of one inch in diameter.
- D. The available closing pressure shall be at least 15% in excess of that required with sufficient volume to operate (close, open, and re-close) the preventers.
- E. All connections to and from preventers to have a pressure rating equivalent to that of the BOP's.
- F. Manual controls to be installed before drilling cement plug.
- G. Valve to control flow through drill pipe to be located on rig floor.
- H. All chokes will be adjustable. Choke spool may be used between rams.

DIAGRAM 1

10-M WP BOP PE WITH 10- ANNULAR



THE FOLLOWING CONSTITUTE MINIMUM BLOWOUT PREVENTER REQUIREMENTS:

- Opening between the ram to be flanged, studded, or clamped.
- All connections from operating manifolds to preventers to be all steel hose or tube a minimum of one inch diameter.
- The available closing pressure shall be at least 15% in excess of that required with sufficient volume to operate (close, open, and re-close) the preventors.
- ALL connections to and from preventer to have a pressure rating equivalent to that of the BOPs.
- Manual controls to be installed before drilling cement plug.
- Kelly cock to be installed on kelly.
- Inside blowout preventer to be available on rig floor.
- Dual operating controls: one located by drillers position and the other located a safe distance from the rig floor.
- All chokes will be adjustable.

DIAGRAM 2