

District I
PO Box 1980, Hobbs, NM 88241-1980
District II
PO Drawer DD, Artesia, NM 88211-0719
District III
1000 Rio Brazos Rd., Aztec, NM 87410
District IV
PO Box 2088, Santa Fe, NM 87504-2088

State of New Mexico
Energy, Minerals & Natural Resources Department

RECEIVED

Form C-101
Revised February 10, 1994

OIL CONSERVATION DIVISION

PO Box 2088
Santa Fe, NM 87504-2088

OIL CON. DIV.

DIST. 2 ☐ AMENDED REPORT

Instructions on back
Submit to Appropriate District Office
State Lease - 6 Copies
Fee Lease - 5 Copies

APPLICATION FOR PERMIT TO DRILL, RE-ENTER, DEEPEN, PLUGBACK, OR ADD A ZONE

Operator Name and Address: SONAT EXPLORATION COMPANY 110 WEST LOUISIANA, STE 500 MIDLAND, TEXAS 79701		OGRID Number 109487
Property Code 17914	Property Name TODD "2" STATE	API Number 30-015-78905
		Well No. 4

Surface Location

UL or lot no.	Section	Township	Range	Lot Ida	Feet from the	North/South line	Feet from the	East/West line	County
I	2	24S	31E		1980'	south	660'	east	EDDY

Proposed Bottom Hole Location If Different From Surface

UL or lot no.	Section	Township	Range	Lot Ida	Feet from the	North/South line	Feet from the	East/West line	County
Proposed Pool 1 INGLE WELLS; DELAWARE					Proposed Pool 2				
33745									

Work Type Code N	Well Type Code O	Cable/Rotary R	Lease Type Code S	Ground Level Elevation 3505'
Multiple N	Proposed Depth 8,700'	Formation DELAWARE	Contractor NA	Spud Date 05/05/96

Proposed Casing and Cement Program

Hole Size	Casing Size	Casing weight/foot	Setting Depth	Sacks of Cement	Estimated TOC
14 3/4"	11 3/4"	42# WC40	400'	sufficient to circ.	surface
11"	8 5/8"	23# M50	4400'	sufficient to circ.	surface
7 7/8"	5 1/2"	17# J55	8700'	1400 sx	4,000'

Describe the proposed program. If this application is to DEEPEN or PLUG BACK give the data on the present productive zone and proposed new productive zone. Describe the blowout prevention program, if any. Use additional sheets if necessary.

THE SUBJECT WELL IS PROPOSED TO TEST THE DELAWARE. A SCHEMATIC OF THE B.O.P. EQUIPMENT IS ATTACHED.

Post ID-1
4-5-96
New Log & API

I hereby certify that the information given above is true and complete to the best of my knowledge and belief. Signature: <i>K. Glenn Carter</i>		OIL CONSERVATION DIVISION	
Printed name: R. GLENN CARTER		Approved by: ORIGINAL SIGNED BY TIM W. GUM	
Title: SR. DRILLING & PRODUCTION ENGINEER		Title: DISTRICT II SUPERVISOR	
Date: 03/25/96		Approval Date: 3-29-96	Expiration Date: 3-29-97
Phone: (915) 684-0400		Conditions of Approval: Attached <input type="checkbox"/>	

DISTRICT I

P.O. Box 1980, Hobbs, NM 88241-1980

DISTRICT II

P.O. Drawer DD, Artesia, NM 88211-0719

DISTRICT III

1000 Rio Brazos Rd., Aztec, NM 87410

DISTRICT IV

P.O. BOX 2088, SANTA FE, N.M. 87504-2088

State of New Mexico

Energy, Minerals and Natural Resources Department

Form C-102

Revised February 10, 1994

Submit to Appropriate District Office

State Lease - 4 Copies

Fee Lease - 3 Copies

OIL CONSERVATION DIVISION

P.O. Box 2088

Santa Fe, New Mexico 87504-2088

☐ AMENDED REPORT

WELL LOCATION AND ACREAGE DEDICATION PLAT

API Number 30-015-28905	Pool Code 33745	Pool Name Ingle Wells; Delaware
Property Code 17914	Property Name TODD "2" STATE	Well Number 4
OGRID No. 109487	Operator Name SONAT EXPLORATION COMPANY	Elevation 3505

Surface Location

UL or lot No.	Section	Township	Range	Lot Idn	Feet from the	North/South line	Feet from the	East/West line	County
1	2	24 S	31 E		1980	SOUTH	660	EAST	EDDY

Bottom Hole Location If Different From Surface

UL or lot No.	Section	Township	Range	Lot Idn	Feet from the	North/South line	Feet from the	East/West line	County
Dedicated Acres 40	Joint or Infill	Consolidation Code	Order No.						

NO ALLOWABLE WILL BE ASSIGNED TO THIS COMPLETION UNTIL ALL INTERESTS HAVE BEEN CONSOLIDATED
OR A NON-STANDARD UNIT HAS BEEN APPROVED BY THE DIVISION

LOT 4	LOT 3	LOT 2	LOT 1
39.99 ACRES	39.98 ACRES	39.96 ACRES	39.95 ACRES

OPERATOR CERTIFICATION

I hereby certify that the information contained herein is true and complete to the best of my knowledge and belief.

H. Glenn Carter
Signature

K. GLENN CARTER
Printed Name

SR. DRILLING & PROD. ENGINEER
Title

3/25/96
Date

SURVEYOR CERTIFICATION

I hereby certify that the well location shown on this plat was plotted from field notes of actual surveys made by me or under my supervision, and that the same is true and correct to the best of my belief.

MARCH 15, 1996

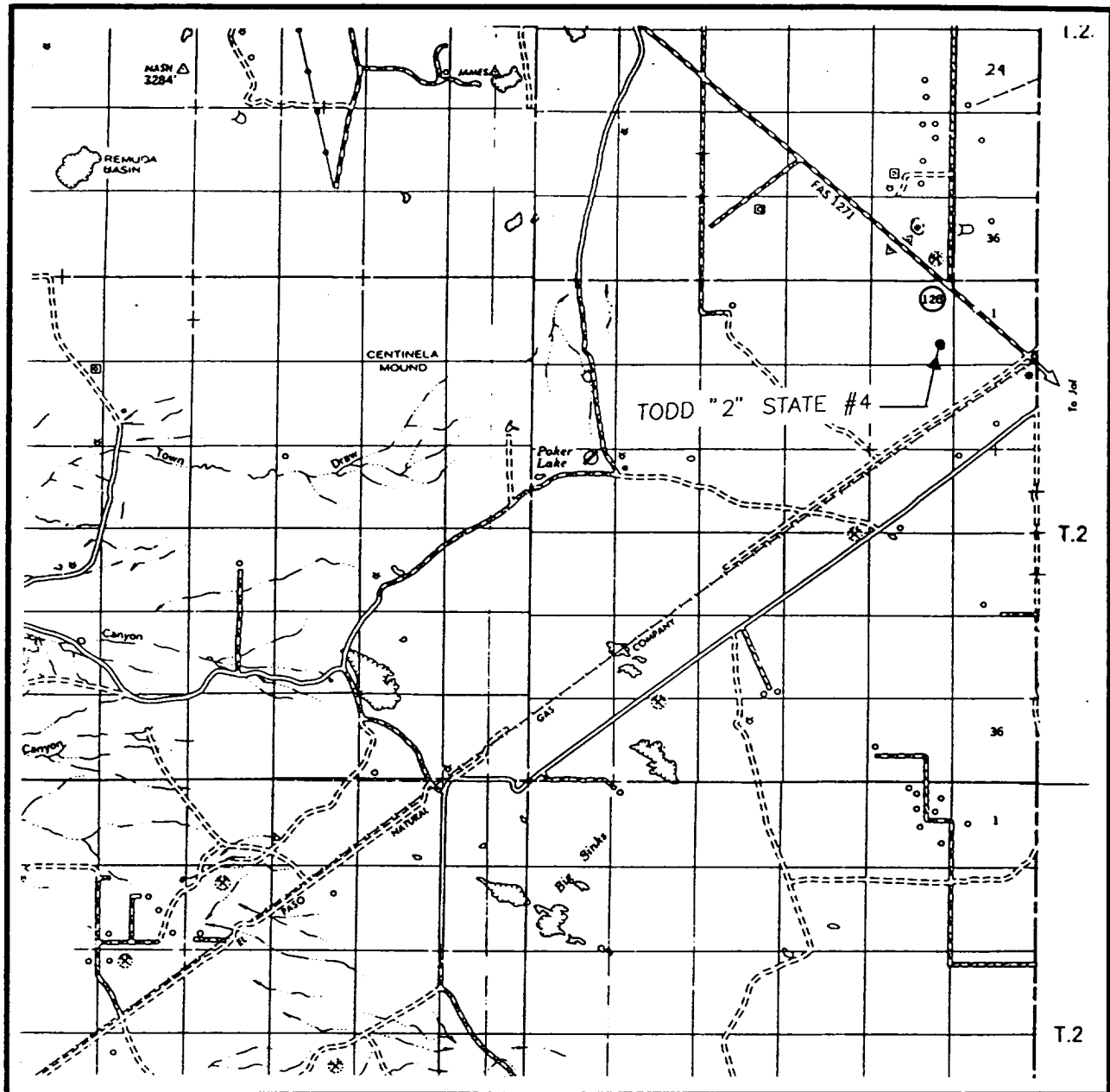
Date Surveyed _____ DMCC

Signature *John W. Eidsen*
Professional Surveyor

1239 3-20-96

Certificate No. 1239 JOHN W. EIDSON 676
3239
12641

VICINITY MAP



SCALE: 1" = 2 MILES

SEC. 2 TWP. 24-S RGE. 31-E

SURVEY N.M.P.M.

COUNTY EDDY

DESCRIPTION 1980' FSL & 660' FEL

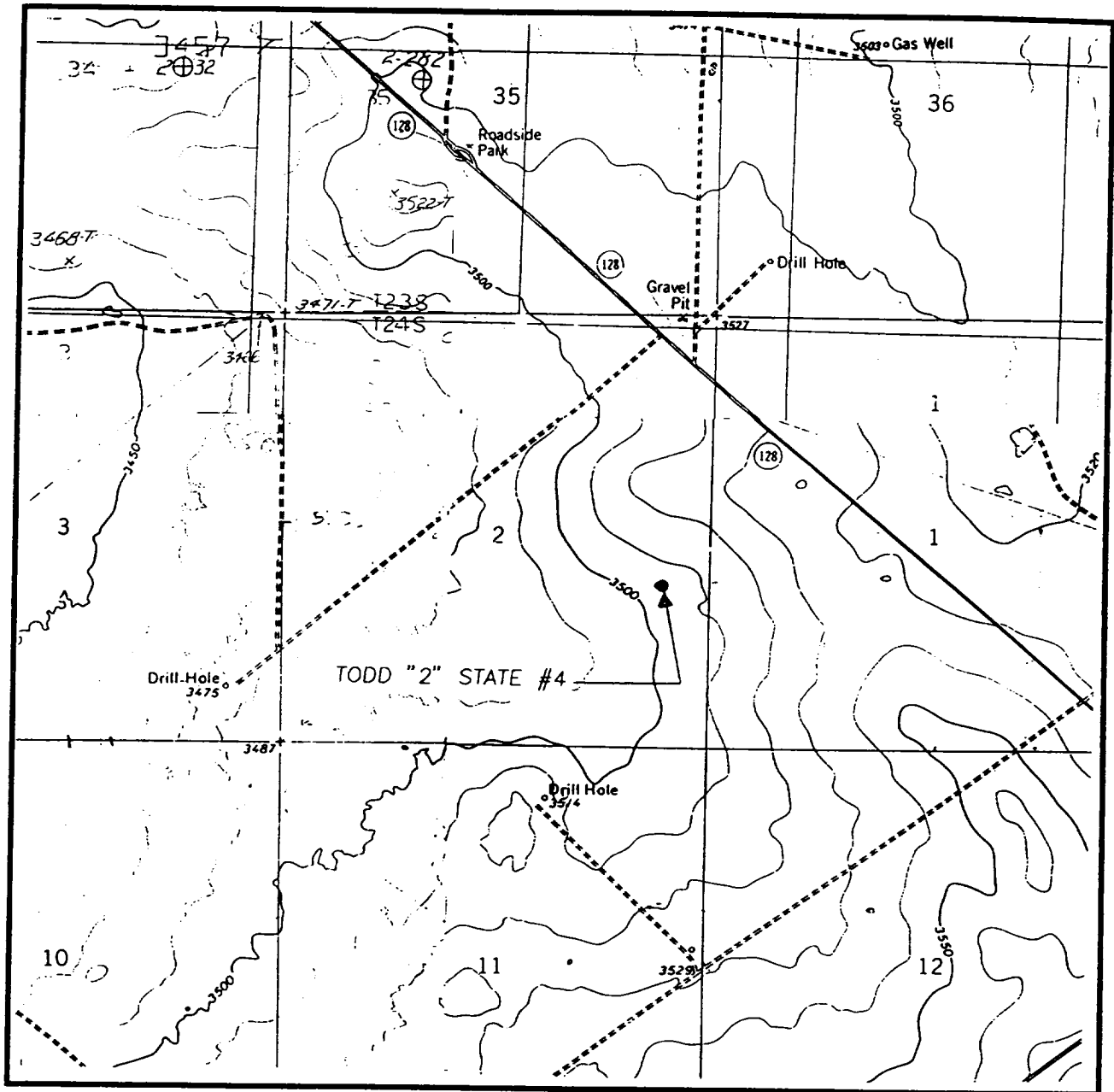
ELEVATION 3505

OPERATOR SONAT EXPLORATION CO.

LEASE TODD "2" STATE

JOHN WEST ENGINEERING
HOBBS, NEW MEXICO
(505) 393-3117

LOCATION VERIFICATION MAP



SCALE: 1" = 2000'

SEC. 2 TWP. 24-S RGE. 31-E

SURVEY N.M.P.M.

COUNTY EDDY

DESCRIPTION 1980' FSL & 660' FEL

ELEVATION 3505

OPERATOR SONAT EXPLORATION CO.

LEASE TODD "2" STATE

U.S.G.S. TOPOGRAPHIC MAP

LOS MEDANOS, BIG SINKS,

BOOTLEG RIDGE, PADUCA BREAKS, N.M.

CONTOUR INTERVAL:

BOOTLEG RIDGE - 10'

PADUCA BREAKS - 10'

LOS MEDANOS - 10'

BIG SINKS - 10'

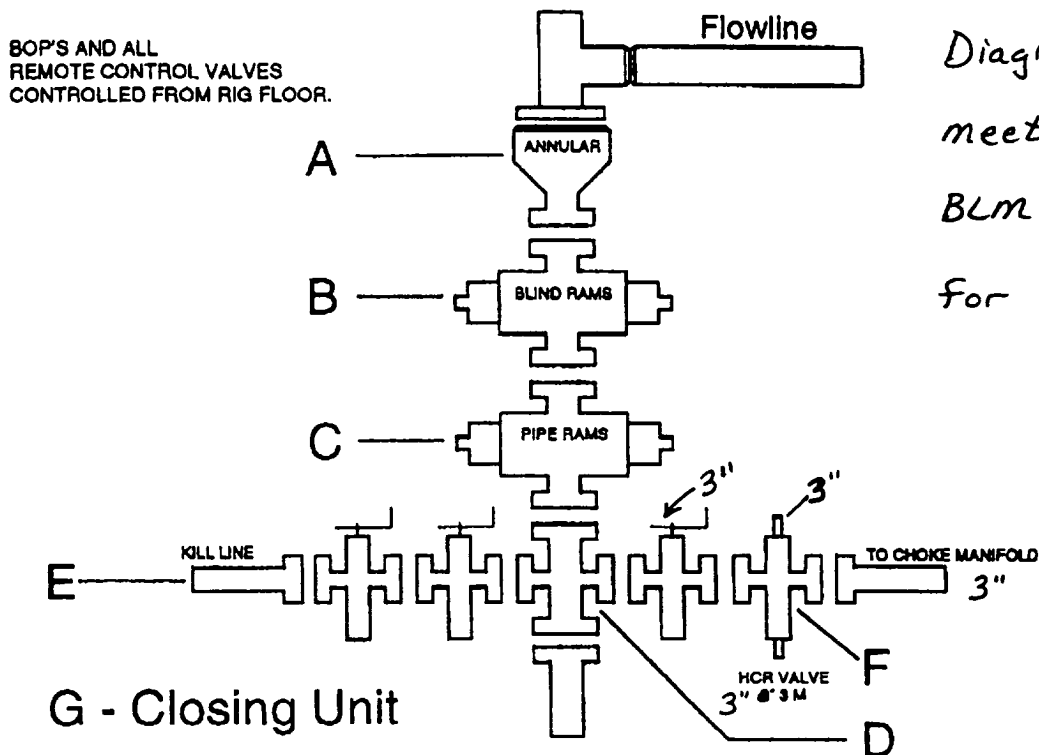
**JOHN WEST ENGINEERING
HOBBS, NEW MEXICO**

(505) 393-3117

SONAT EXPLORATION

West ~~SONAT~~ TEXAS BUSINESS UNIT

Minimum Requirements for a 3,000 psi BOP Stack Manifold & Closing System



- A. Annular BOP Must be 3000 psi Working Pressure.
- B. Blind Rams Between Annular & Pipe Rams w/ 3000 psi Working Pressure.
- C. Pipe Rams Below Blind Rams w/ 3000 psi Working Pressure.
- Note: All Rams & Spools Must Meet Required I.D. for Hole Size.
- D. Drilling Spool w/ 2 Outlets for Choke Line & Kill Line
- E. Kill Line 2" 3 M w/ 2 Manual Valves Bolted & Flanged Below Bottom Pipe Rams. Either a Drilling Spool or the Outlet on the BOP Stack can be Used to Accommodate Kill Line and Choke Line.
- F. Choke Line w/ 3" 3 M Valves. Inside Valve can be Manual but the Outside Valve Must be Hydraulic (HCR). Choke Line Must be 3" 3 M.
- G. Closing Unit (Koomey) w/ a Primary & Secondary Pressure Supply to Operate the BOP Stack. Also a N₂ Supply will be Provided as a Final Source of Operation to Close the BOP Stack. This Unit is Required to Contain a minimum of 1 1/2 Times the Needed Volume to Operate the BOP Stack at All Times. The Precharge of N₂ will be Checked Prior to Commencing Work for SONAT.

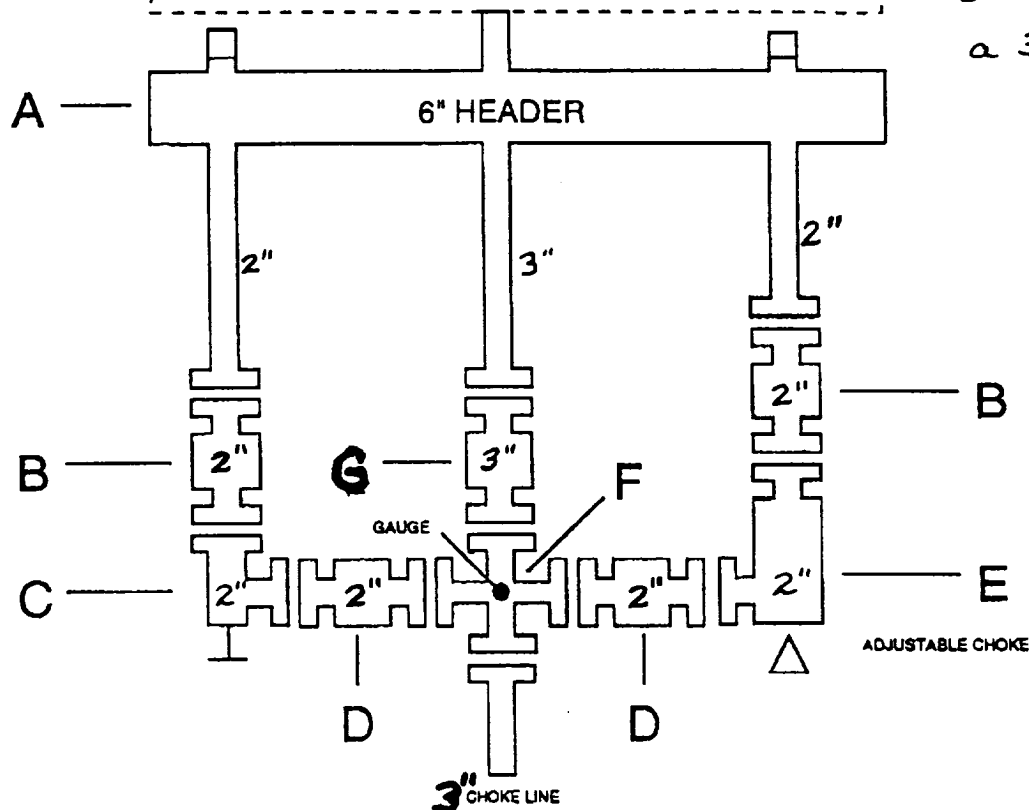
SONAT EXPLORATION

West ~~TEXAS~~ TEXAS BUSINESS UNIT

Minimum Requirements for a
3,000 psi BOP Stack Manifold

A Gas Buster is Preferred but not
Necessary on a 3,000 psi System

Diagram as shown
meets the minimum
BLM requirements for
a 3m stack.



- A. Header for Gas Expansion 6" O.D. Tube.
- B. 2" 3 M Manual Valves on Down Stream Side of Choke.
- C. 2" 3 M Manual Adjustable ~~Positive Choke~~
- D. 2" 3 M Manual Valve
- E. 2" 3 M Adjustable w/ Remote Station
- F. 3" 3 M Tee w/ Gauge in Top Side 3" Choke Line

Note: All Pipe Will be Flanged & Welded. No Screwed Connections.

G. 3" 3m Manual Valve