

Submit 3 Copies

to Appropriate

DISTRICT I

P. O. Box 1980, Hobbs, NM 88240

DISTRICT II

811 S. 1st Street, Artesia, NM 88210-283

DISTRICT III

1000 Rio Brazos Rd., Aztec, NM 87410

DISTRICT IV

P. O. Box 2088, Santa Fe, NM 87504-2088

State of New Mexico

Energy, Minerals and Natural Resources Department

Form C-101

Revised February 10, 1994

Instructions on back

OIL CONSERVATION DIVISION

P. O. Box 2088

Santa Fe, New Mexico 87504-2088

Submit to Appropriate District Office

State Lease - 6 Copies

Fee Lease - 5 Copies

AUG 14 1996

AMENDED REPORT

OIL CON. DIV.

APPLICATION FOR PERMIT TO DRILL, RE-ENTER, DEEPEN, PLUG BACK, OR ADD A ZONE

1. Operator Name and Address Bass Enterprises Production Co. P.O. Box 2760 Midland, TX 79702-2760 (915) 683-2277		2. OGRID Number 001801
		3. API Number 30-015-38103
4. Property Code B-10605 1796	5. Property Name Poker Lake Unit	6. Well No. 84

7. Surface Location

UL or lot no.	Section	Township	Range	Lot Idn	Feet from the	North/South line	Feet from the	East/West line	County
G	36	24S	30E		1980'	North	1980'	East	Eddy

8. Proposed Bottom Hole Location If Different From Surface

UL or lot no.	Section	Township	Range	Lot Idn	Feet from the	North/South line	Feet from the	East/West line	County

9. Proposed Pool 1 Poker Lake (Delaware), SW 96047	10. Proposed Pool 2
---	---------------------

11. Work Type Code N	12. Well Type Code O	13. Cable/Rotary R	14. Lease Type Code S	15. Ground Level Elevation 3447
16. Multiple NO	17. Proposed Depth 8250	18. Formation Delaware	19. Contractor Unknown	20. Spud Date Upon Approval

21. Proposed Casing and Cement Program

Hole Size	Casing Size	Casing weight/foot	Setting Depth	Sacks of Cement	Estimated TOC
1) 14 3/4"	11 3/4"	42#	700'	400	Surface
2) 11"	8 5/8"	32#	4200'	1000	Surface
3) 7 7/8"	5 1/2"	15.5	8250'	825	3900'

22. Describe the proposed program. If this application is to DEEPEN or PLUG BACK give the data on the present productive zone and proposed new productive zone. Describe the blowout prevention program, if any. Use additional sheets if necessary.

- 1) Surface casing to be set +/-75' above T/Salt in Rustler Anhydrite.
- 2) Intermediate casing to be set in the Lamar Lime.
- 3) Production casing to be tied back 300' into 8 5/8" intermediate casing.

Post ID-1
8-23-96
New Loc & API

Drilling procedure, BOP diagram, anticipated tops attached.

This well is outside the R-111 Potash Areas

23. I hereby certify that the information given above is true and complete to the of my knowledge and belief.

Signature: *William R. Dannels*

Printed Name: W.R. Dannels

Title: Division Drilling Supt.

Date: 8/9/96

Phone: (915) 683-2277

OIL CONSERVATION DIVISION

Approved by: ORIGINAL SIGNED BY TIM W. GUM
DISTRICT II SUPERVISOR

Title:

Approval Date: 8-19-96 EXPIRATION DATE

Conditions of Approval:

Attached

8-19-97

DISTRICT I
P.O. Box 1980, Hobbs, NM 88240

DISTRICT II
P.O. Drawer DD, Artesia, NM 88210

DISTRICT III
1000 Rio Brazos Rd., Aztec, NM 87410

State of New Mexico
Energy, Minerals and Natural Resources Department

Form C-102
Revised February 10, 1994
Instruction on back
Submit to Appropriate District Office
State Lease - 4 Copies
Fee Lease - 3 Copies

OIL CONSERVATION DIVISION

P.O. Box 2088
Santa Fe, New Mexico 87504-2088

☐ AMENDED REPORT

WELL LOCATION AND ACREAGE DEDICATION PLAT

API Number 30-015-29103	Pool Code 96047	Pool Name POKER LAKE (DELAWARE), SW
Property Code B-10685	Property Name Poker Lake Unit	Well Number 84
OGRID No. 001801	Operator Name Bass Enterprises Production Company	Elevation 3447'

Surface Location

UL or lot No. G	Section 36	Township 24 S	Range 30 E	Lot Idn	Feet from the 1980	North/South line North	Feet from the 1980	East/West line East	County Eddy
---------------------------	----------------------	-------------------------	----------------------	---------	------------------------------	----------------------------------	------------------------------	-------------------------------	-----------------------

Bottom Hole Location If Different From Surface

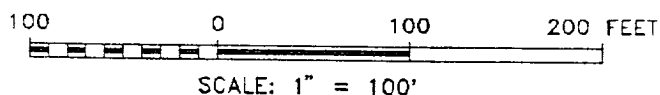
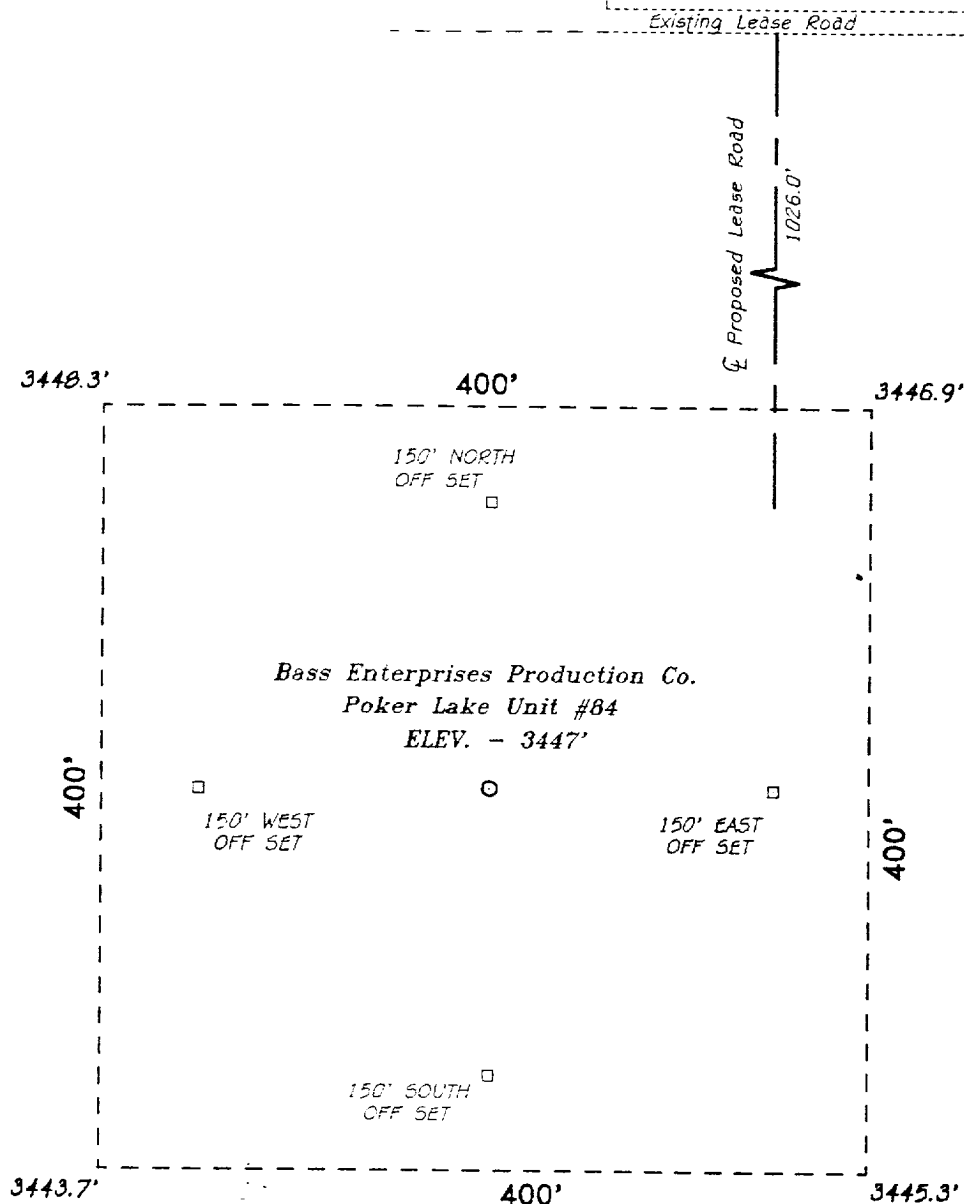
UL or lot No.	Section	Township	Range	Lot Idn	Feet from the	North/South line	Feet from the	East/West line	County
Dedicated Acres 40	Joint or Infill Infill	Consolidation Code	Order No.						

NO ALLOWABLE WILL BE ASSIGNED TO THIS COMPLETION UNTIL ALL INTERESTS HAVE BEEN CONSOLIDATED
OR A NON-STANDARD UNIT HAS BEEN APPROVED BY THE DIVISION

				<p>OPERATOR CERTIFICATION</p> <p>I hereby certify the the information contained herein is true and complete to the best of my knowledge and belief.</p> <p><i>William R. Dannels</i> Signature</p> <p><u>William R. Dannels</u> Printed Name</p> <p><u>Division Drilling Supt.</u> Title</p> <p><u>August 7, 1996</u> Date</p>	
<p>SURVEYOR CERTIFICATION</p> <p>I hereby certify that the well location shown on this plat was plotted from field notes of actual surveys made by me or under my supervision, and that the same is true and correct to the best of my belief.</p> <p><u>August 2, 1996</u> Date Surveyed</p> <p><u>GARY L. JONES</u> Signature & Seal of Professional Surveyor</p> <p><u>W.O. No. 6306b</u> Certificate No. 7977</p> <p>BASIN SURVEYS</p>					
Lot 1 - 39.11 Ac Lot 2 - 39.36 Ac Lot 3 - 39.62 Ac Lot 4 - 39.87 Ac					

SECTION 36, TOWNSHIP 24 SOUTH, RANGE 30 EAST, N.M.P.M.,
EDDY COUNTY, NEW MEXICO.

Poker Lake
Unit #105



BASS ENTERPRISES PRODUCTION CO.

REF: Poker Lake Unit No. 84 / Well Pad Topo

THE POKER LAKE UNIT No. 84 LOCATED 1980' FROM THE
NORTH LINE AND 1980' FROM THE EAST LINE OF
SECTION 36, TOWNSHIP 24 SOUTH, RANGE 30 EAST,
N.M.P.M., EDDY COUNTY, NEW MEXICO.

BASIN SURVEYS P.O. BOX 1786-HOBBS, NEW MEXICO

W.O. Number: 6306

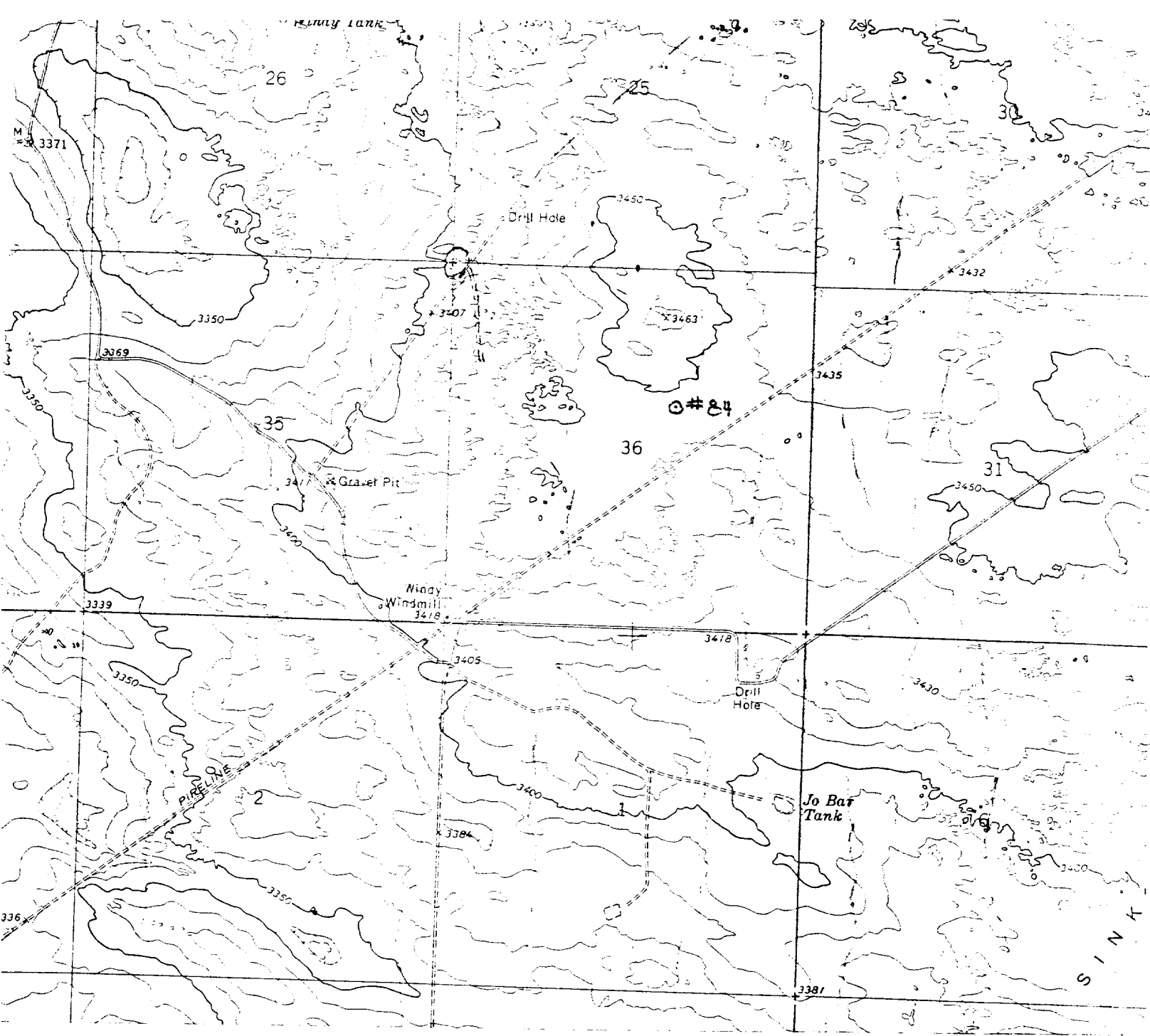
Drawn By: S.C. NICHOLS

Date: 08-05-96

Disk: SCN #30 - 6306BB.DWG

Survey Date: 08-02-96

Sheet 1 of 1 Sheets



BASS ENTERPRISES PRODUCTION CO.
 POKER LAKE UNIT #84
 1980' FNL & 1980 FEL
 Sec. 36, T-24-S, R-30-E,
 Eddy County, New Mexico.

SCALE: 1" = 2000'

2000' 0 2000' 4000 Feet

BASIN SURVEYS P.O. BOX 1786 - HOBBS, NEW MEXICO

W.O. Number: 6306	Drawn By: S.C. Nichols	Survey Date: 08-02-96	Sheet 1 of 1 Sheets
-------------------	------------------------	-----------------------	---------------------

**EIGHT POINT DRILLING PROGRAM
BASS ENTERPRISES PRODUCTION CO.**

NAME OF WELL: POKER LAKE UNIT NO. 84

LEGAL DESCRIPTION - SURFACE: 1980' FNL & 1980' FEL, Section 36, T-24-S, R-30-E, Eddy County, New Mexico.

POINT 1: ESTIMATED FORMATION TOPS

(See No. 2 Below)

POINT 2: WATER, OIL, GAS AND/OR MINERAL BEARING FORMATIONS

Anticipated Formation Tops: KB 3462' (est)
GL 3447'

<u>FORMATION</u>	<u>ESTIMATED TOP FROM KB</u>	<u>ESTIMATED SUBSEA TOP</u>	<u>BEARING</u>
T/Rustler	427'	+3035'	Barren
T/Salt	775'	+2687'	Barren
B/Salt	3963'	- 501'	Barren
T/Lamar Lime	4181'	- 719'	Oil/Gas
T/Ramsey Sand	4215'	- 753'	Oil/Gas
T/Lwr Cherry Canyon Pay	6220'	- 2758'	Oil/Gas
T/#103 Show Zone	6581'	- 3119'	Oil/Gas
T/Livingston Ridge	6674'	- 3212'	Oil/Gas
T/Lwr Brushy Canyon	7749'	- 4287'	Oil/Gas
T/Bone Spring Lime	8042'	- 4580'	Oil/Gas
TD	8250'	- 4788'	

POINT 3: CASING PROGRAM

<u>TYPE</u>	<u>INTERVALS</u>	<u>PURPOSE</u>	<u>CONDITION</u>
11-3/4", 42#, WC-40, ST&C	0' - 700'	Surface	New
8-5/8", 32#, WC-50, ST&C	0' - 4200'	Intermediate	New
5-1/2", 17# & 15.50#, K55, LT&C	0' - 8250'	Production	New

POINT 4: PRESSURE CONTROL EQUIPMENT (SEE ATTACHED DIAGRAM)

A BOP equivalent to Diagram 1 will be nipped up on the surface casing head. When testing, the BOP stack, choke, kill lines, kelly cocks, inside BOP, etc. will be hydro-tested to 70% of internal yield of the casing. In addition to the rated working pressure test, a low pressure (200 psi) test will be required. These tests will be performed:

- a) Upon installation
- b) After any component changes
- c) Twenty days after a previous test
- d) As required by well conditions

Con't...

POINT 4: PRESSURE CONTROL EQUIPMENT (SEE ATTACHED DIAGRAM)

A function test of annular, pipe and blind rams to insure that the preventers are operating correctly will be performed on each trip. A function test is required only a minimum of once every 24 hours. See the attached diagrams for the minimum criteria for the choke manifold.

POINT 5: MUD PROGRAM

<u>DEPTH</u>	<u>MUD TYPE</u>	<u>WEIGHT</u>	<u>FV</u>	<u>PV</u>	<u>YP</u>	<u>FL</u>	<u>Ph</u>
0' - 700'	FW Spud	8.4 - 9.0	38-45	NC	NC	NC	9-10
700' - 4200'	Brine	9.8 -10.2	28-32	NC	NC	NC	9-10
4200' - 6500'	FW	8.4 - 8.8	28-30	NC	NC	NC	10
6500' - 8250'	FW/Starch	8.6 - 9.0	30-32	NC	NC	<100	10

POINT 6: TECHNICAL STAGES OF OPERATION

A) TESTING

None anticipated.

B) LOGGING

GR-CNL from 4200' to surface.

GR-CNL-LDT and GR-DIL-SFL from TD to 4200'.

C) CONVENTIONAL CORING

None anticipated.

D) CEMENT

<u>INTERVAL</u> <u>SURFACE</u>	<u>AMOUNT SXS</u>	<u>FT OF</u> <u>FILL</u>	<u>TYPE</u>	<u>GALS/SX</u>	<u>PPG</u>	<u>FT³/SX</u>
0-400'	200 (100% excess circ to surface)	400	Class C + 6% gel +1/4 pps Cellophane	10.96	12.39	2.00
400-700'	200 (100% excess circ to surface)	300	Class "C" + 2% CaCl ₂	6.32	14.8	1.32
<u>INTERMEDIATE</u>						
0-3700'	800	3700	35/65 Poz C + 6% gel + 5% Salt + 1/4# Cellophane	11.84	12.4	2.14
3700-4200'	200	500	Class C	6.32	14.8	1.32
<u>PRODUCTION</u>						
<u>1st Stage</u>						
6400-8250'	325	1850	Class H + 3% D13 + 3% D44 + 1/4 gal/sk D155 + 0.05 gal/sk D604AM	9.84	14.4	1.66
<u>2nd Stage</u>						
<u>LEAD</u>						
3900-5800'	400	1900	35/65 Poz C + 6% gel+ 5% Salt + 1/4# Cellophane	11.84	12.4	2.14
<u>TAIL</u>						
5800-6400'	100	600	Class "C" Neat	6.32	14.8	1.32

E) DIRECTIONAL DRILLING

No directional services anticipated.

POINT 7: ANTICIPATED RESERVOIR CONDITIONS

Normal pressured formations are anticipated throughout this well.

POINT 8: OTHER PERTINENT INFORMATION

A) Auxiliary Equipment

Upper and lower kelly cocks. Full opening stab in valve on the rig floor.

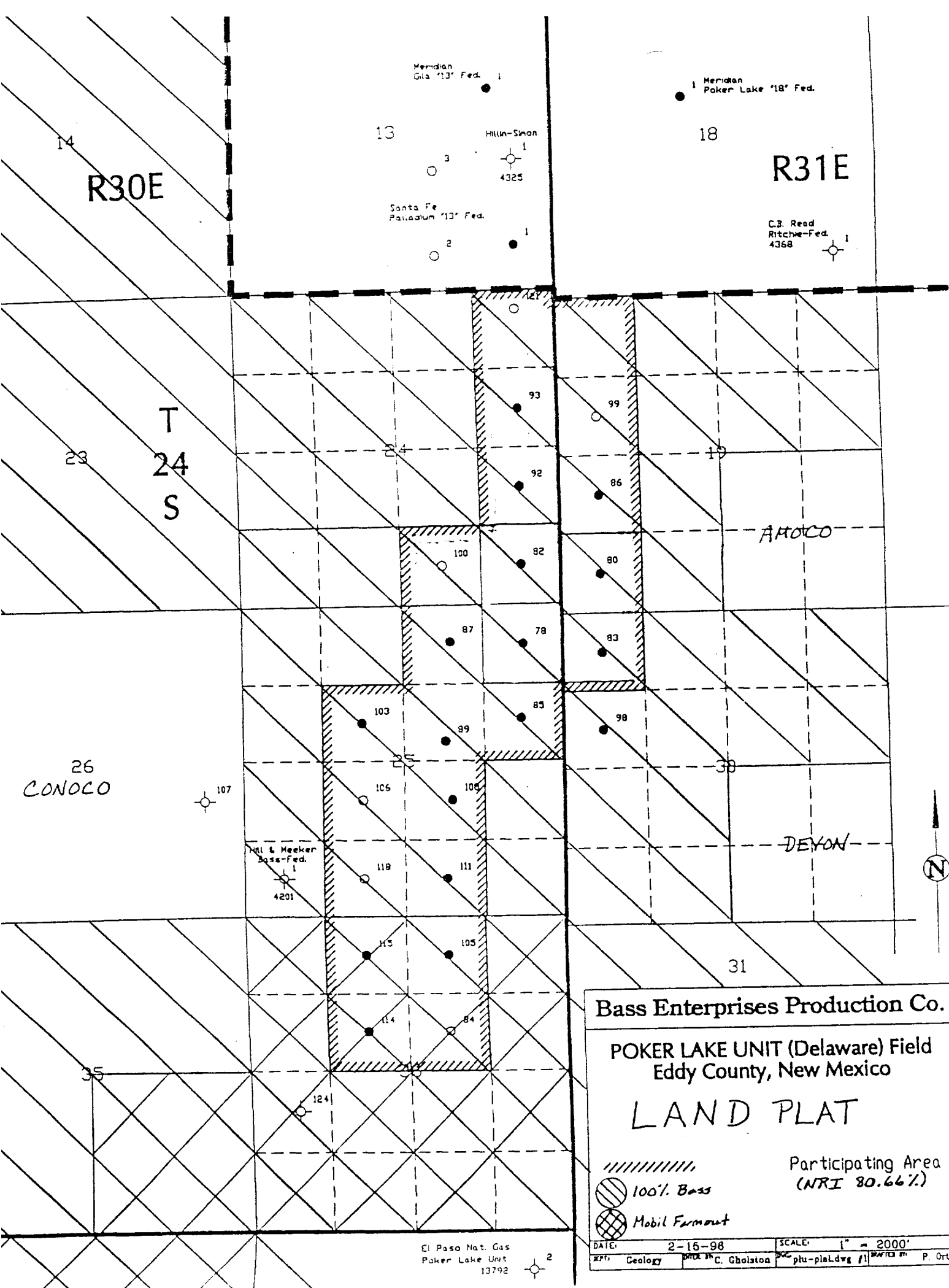
B) Anticipated Starting Date

Upon approval

16 days drilling operations

6 days completion operations

FDC/rgh
8-07-96



Meridian
Gls '13' Fed. 1

1 Meridian
Poker Lake '18' Fed.

13

Hill-Simon

1

4325

Santa Fe
Palladium '13' Fed.

2

1

18

R31E

C.S. Read
Ritchie-Fed.
4368

1

T
24
S

23

24

19

AMOCO

26
CONOCO

107

Hill & Meeker
Bass-Fed.

4201

25

25

30

DEYON

N

31

35

124

El Paso Nat. Gas
Poker Lake Unit
13792

2

Bass Enterprises Production Co.

POKER LAKE UNIT (Delaware) Field
Eddy County, New Mexico

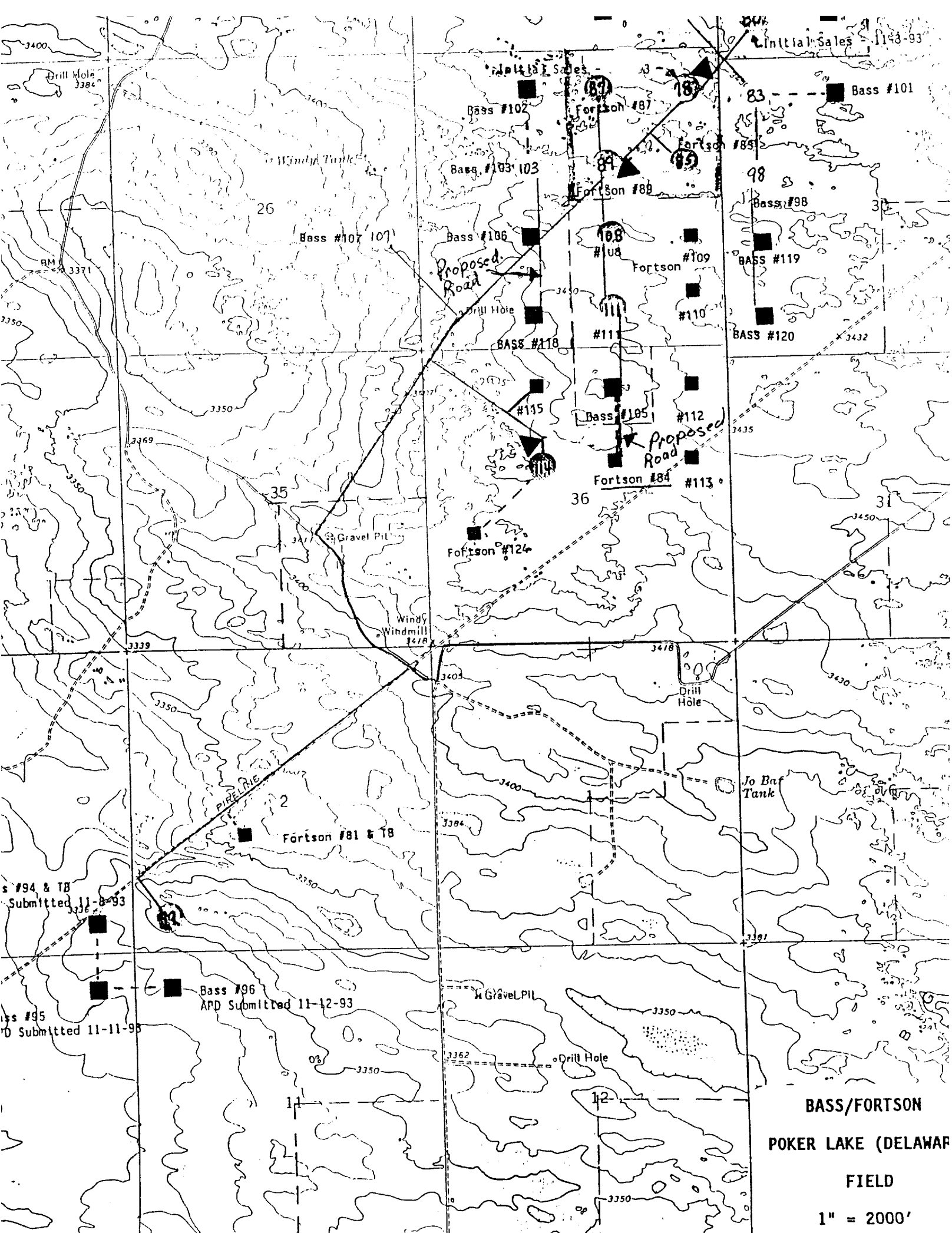
LAND PLAT

100% Bass

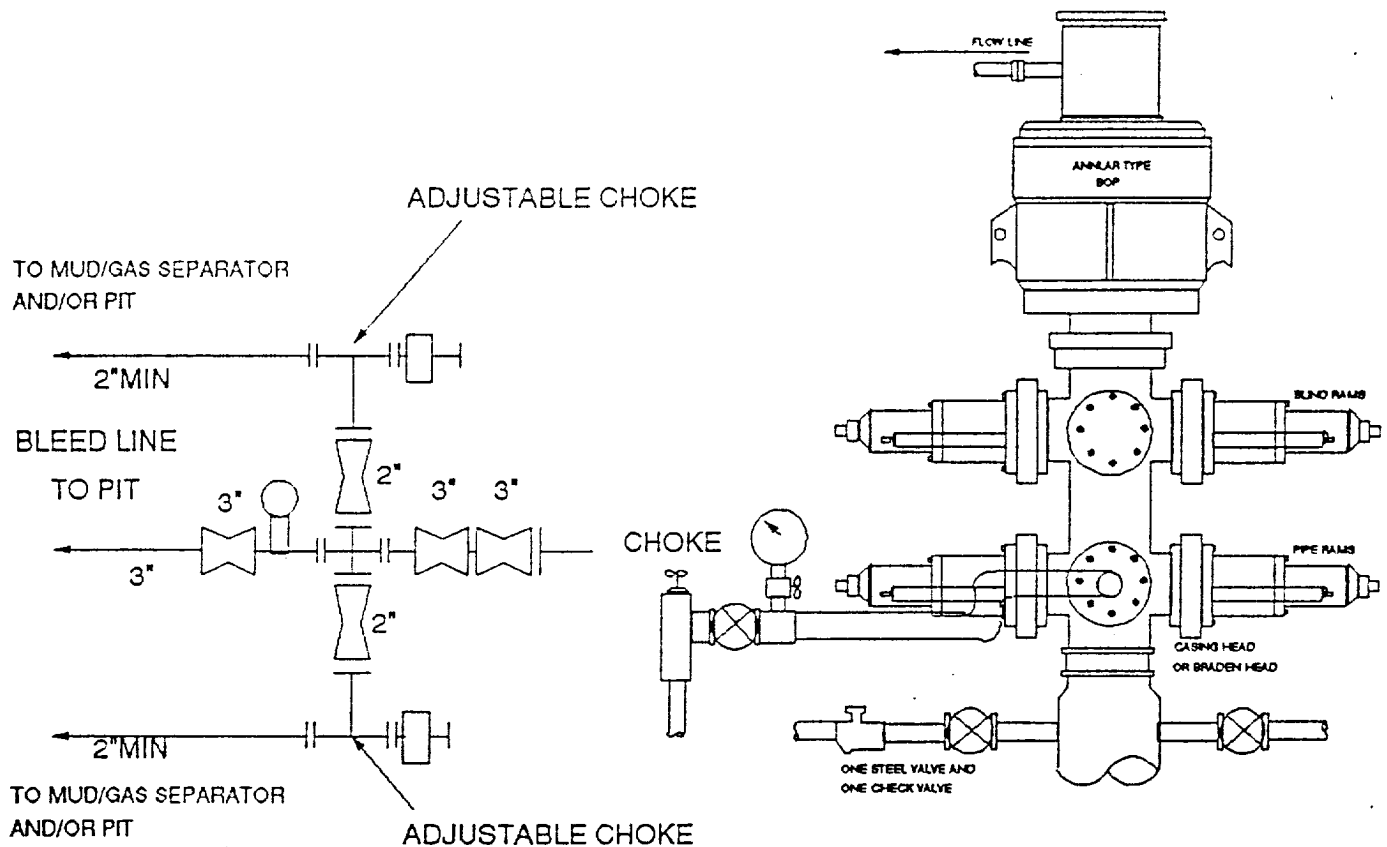
Mobil Farmout

Participating Area
(NRI 80.66%)

DATE: 2-15-98 SCALE: 1" = 2000'
GEOLOGY: C. Gholston P. Ortiz



3000 PSI WP



THE FOLLOWING CONSTITUTE MINIMUM BLOWOUT PREVENTER REQUIREMENTS

- A. One double gate blowout preventer with lower rams for pipe and upper rams blind, all hydraulically controlled.
- B. Opening on preventers between rams to be flanged, studded or clamped and at least two inches in diameter.
- C. All connections from operating manifold to preventers to be all steel hose or tube a minimum of one inch in diameter.
- D. The available closing pressure shall be at least 15% in excess of that required with sufficient volume to operate (close, open, and re-close) the preventers.
- E. All connections to and from preventers to have a pressure rating equivalent to that of the BOP's.
- F. Manual controls to be installed before drilling cement plug.
- G. Valve to control flow through drill pipe to be located on rig floor.
- H. All chokes will be adjustable. Choke spool may be used between rams.

DIAGRAM 1