

UNITED STATES
DEPARTMENT OF THE INTERIOR
BUREAU OF LAND MANAGEMENT

OIL CONSERVATION DIV

811 S. 1st ST.
ARTESIA, NM 88210-2834

FORM APPROVED

Budget Bureau No. 1004-0136
Expires: December 31, 1991

SUBMIT IN TRIPLICATE

10117
1014151617181920
DEC 1997
OCD - ARTESIA

APPLICATION FOR PERMIT TO DRILL OR DEEPEN

1a. Type of Work DRILL ☒ DEEPEN ☐
1b. Type of Well
OIL WELL ☐ GAS WELL ☒ OTHER ☐
SINGLE ZONE ☒
MULTIPLE ZONE ☐

2. Name of Operator TEXACO EXPLORATION & PRODUCTION INC.

3. Address and Telephone No. P.O. Box 3109, Midland Texas 79702 688-4606

4. Location of Well (Report location clearly and in accordance with any State requirements. *)
At Surface
Unit Letter L : 1650 Feet From The SOUTH Line and 660 Feet From The WEST Line
At proposed prod. zone
SAME

5. Lease Designation and Serial No. NM 0503

6. If Indian, Allottee or Tribe Name

7. If Unit or CA, Agreement Designation COTTON DRAW UNIT

8. Well Name and Number COTTON DRAW UNIT

9. API Well No. 31-115-29252

10. Field and Pool, Exploratory Area PADUCA DEVONIAN/ PADUCA MORROW 82480

11. SEC., T., R., M., or BLK. and Survey or Area
Sec. 1, Township 25-S, Range 31-E

12. County or Parish EDDY

13. State NEW MEXICO

14. Distance in Miles and Direction from Nearest Town or Post Office*
32 MILE SE OF LOVING, NM

15. Distance From Proposed* Location to Nearest Property or Lease Line, Ft. (also to nearest drig. unit line, if any) 660'

16. No. of Acres in Lease 2360.8

17. No. of Acres Assigned To This Well 320.6

18. Distance From Proposed Location* to Nearest Well, Drilling, Completed or Applied For, On This Lease, Ft. 3131'

19. Proposed Depth 16800'

20. Rotary or Cable Tools ROTARY

21. Elevations (Show whether DF, RT, GR, etc.) GR-3457 Secretary's Potash

22. Approx. Date Work Will Start* 9/15/96

23. PROPOSED CASING AND CEMENT PROGRAM				
SIZE OF HOLE	GRADE, SIZE OF CASING	WEIGHT PER FOOT	SETTING DEPTH	QUANTITY OF CEMENT
26	J55, 20	94#	700'	1575 SACKS - CIRCULATE
17 1/2	N80, 13 3/8	68#	4500'	3250 SACKS - CIRCULATE
12 1/4	P110, 9 5/8	47 & 53.5#	12000'	3700 SACKS - TOC @ 3000'
8 1/2	P110, 7	29#	16000' TOP OF LINER @ 11700'	1000 SACKS - TOC @ 11700
6 1/8	P110, 5	18#	16800' TOP OF LINER @ 15800'	300 SACKS - TOC @ 15800'

SEE ATTACHED DRILLING PLAN FOR CASING DETAILS AND CEMENTING PROGRAM.

120 DAYS TO DRILL. 30 DAYS TO COMPLETE.

THERE ARE NO OTHER OPERATORS IN THIS QUARTER QUARTER SECTION.

Subject to
General Requirements and
Special stipulations
Attached

In Above Space Describe Proposed Program: If proposal is to deepen, give data on present productive zone and proposed new productive zone. If proposal is to drill or deepen directionally, give pertinent data on subsurface locations and measured true verticle depths. Give blowout preventer program, if any.

24. I hereby certify that the foregoing is true and correct

SIGNATURE C. Wade Howard TITLE Eng. Assistant DATE 8/7/96
TYPE OR PRINT NAME C. Wade Howard

(This space for Federal or State office use)

PERMIT NO. APPROVAL DATE

Application approval does not warrant or certify that the applicant holds legal or equitable title to those rights in the subject lease which would entitle the applicant to conduct operations thereon.

APPROVED BY Gilbert J. Lucero TITLE Acting State Director DATE 10-8-96
CONDITIONS OF APPROVAL, IF ANY:

Title 18 U.S.C. Section 1001, makes it a crime for any person knowingly and willfully to make to any department or agency of the United States any false, fictitious or fraudulent statements or representations as to any matter within its jurisdiction.

DISTRICT 1
P. O. Box 1980, Hobbs, NM 88240

DISTRICT II
P. O. Drawer DD, Artesia, NM 88210

DISTRICT III
1000 Rio Brazos Rd., Aztec, NM 87410

DISTRICT IV
P. O. Box 2088, Santa Fe, NM 87504-2088

State of New Mexico
Energy, Minerals and Natural Resources Department

Form C-102
Revised February 10, 1994

Instructions on back

OIL CONSERVATION DIVISION

PO Box 2088
Santa Fe, NM 87504-2088

Submit to Appropriate District Office

State Lease-4 copies
Fee Lease-3 copies

☐ AMENDED REPORT

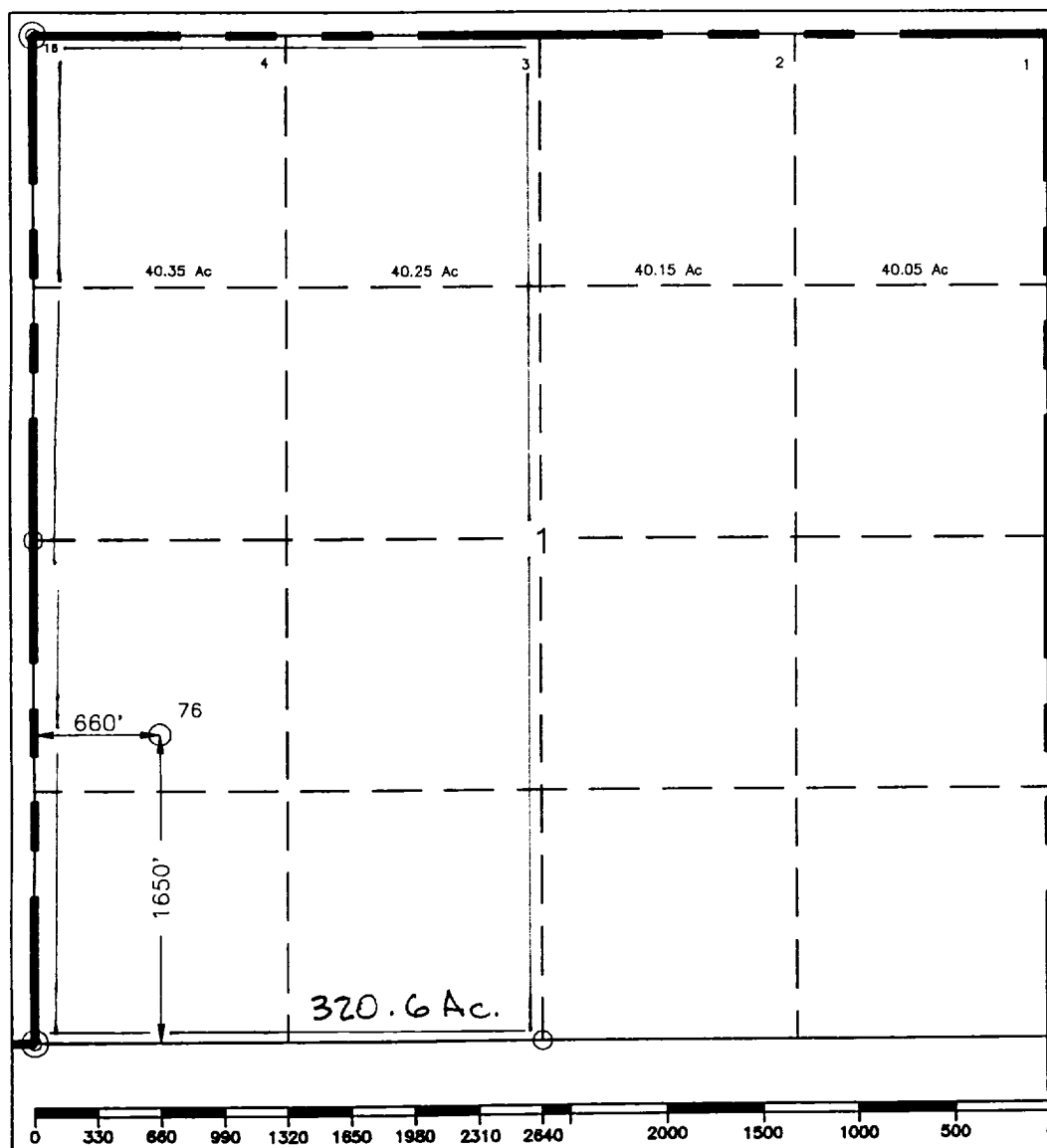
WELL LOCATION AND ACREAGE DEDICATION PLAT

¹ API Number 30-015-29920	² Pool Code 82480	³ Pool Name Paduca Devonian, Paduca Morrow ✓
⁴ Property Code 10920	⁵ Property Name Cotton Draw Unit	⁶ Well Number 76
⁷ OGRID No. 22351	⁸ Operator Name TEXACO EXPLORATION & PRODUCTION, INC.	⁹ Elevation 3457'

¹⁰ Surface Location									
UL or lot no. L	Section 1	Township 25-S	Range 31-E	Lot Idn	Feet from the 1650'	North/South line South	Feet from the 660'	East/West line West	⁷ County Eddy

¹¹ Bottom Hole Location If Different From Surface									
UL or lot no.	Section	Township	Range	Lot Idn	Feet from the	North/South line	Feet from the	East/West line	⁷ County
¹² Dedicated Acres 320.6		¹³ Joint or Infill		¹⁴ Consolidation Code		¹⁵ Order No.			

NO ALLOWABLE WILL BE ASSIGNED TO THIS COMPLETION UNTIL ALL INTERESTS HAVE BEEN CONSOLIDATED
OR A NON-STANDARD UNIT HAS BEEN APPROVED BY THE DIVISION.

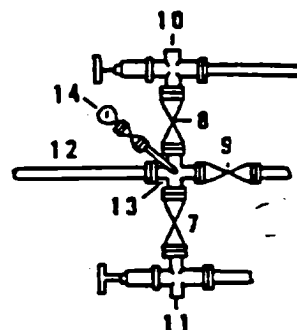
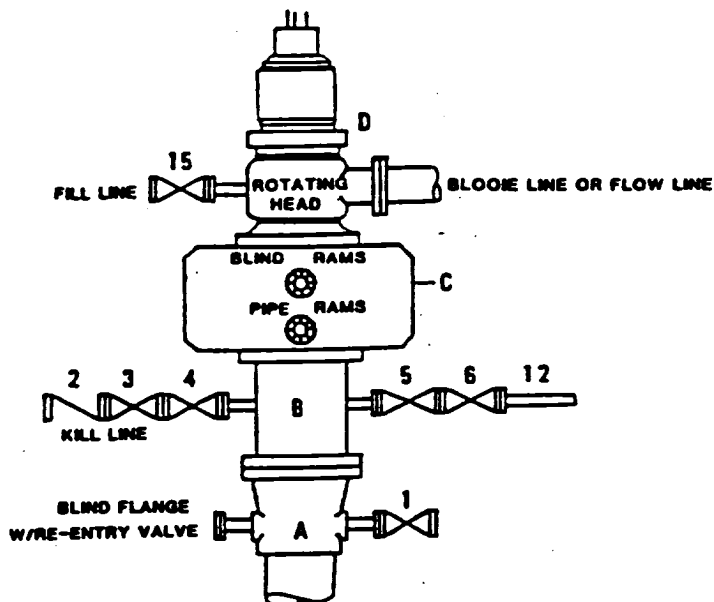


¹⁰ OPERATOR CERTIFICATION I hereby certify that the information contained herein is true and complete to the best of my knowledge and belief. C Signature <i>C. Wade Howard</i> Printed Name C. Wade Howard Position Engineer's Assistant Company Texaco Expl. & Prod. Inc. Date August 7, 1996
¹⁶ SURVEYOR CERTIFICATION I hereby certify that the well location shown on this plat was plotted from field notes of actual surveys made by me or under my supervision, and that the same is true and correct to the best of my knowledge and belief. Date Surveyed August 5, 1996 Signature & Seal of Professional Surveyor <i>John S. Piper</i> Certificate No. 7254 John S. Piper
Sheet 8 of 8

○ = Staked Location ● = Producing Well = Injection Well ◇ = Water Supply Well ◆ = Plugged & Abandon Well

**DRILLING CONTROL
CONDITION II-B 3000 WP
FOR AIR DRILLING OR
WHERE NITROGEN OR AIR BLOWS ARE EXPECTED**

H₂S TRIM REQUIRED
YES X NO



**DRILLING CONTROL
MATERIAL LIST - CONDITION II - B**

- | | |
|----------------|---|
| A | Texaco Wellhead |
| B | 3000# W.P. drilling spool with a 2" minimum flanged outlet for kill line and 3" minimum flanged outlet for choke line. |
| C | 3000# W.P. Dual ram type preventer, hydraulic operated with 1" steel, 3000# W.P. control lines (where sub-structure height is adequate, 2 - 3000# W.P. single ram type preventers may be utilized). |
| D | Rotating Head with fill up outlet and extended Bloode Line. |
| 1,3,4,
7,8, | 2" minimum 3000# W.P. flanged full opening steel gate valve, or Halliburton Lo Torc Plug valve. |
| 2 | 2" minimum 3000# W.P. back pressure valve. |
| 5,6,9 | 3" minimum 3000# W.P. flanged full opening steel gate valve, or Halliburton Lo Torc Plug valve. |
| 12 | 3" minimum schedule 80, Grade "B", seamless line pipe. |
| 13 | 2" minimum x 3" minimum 3000# W.P. flanged cross. |
| 10,11 | 2" minimum 3000# W.P. adjustable choke bodies. |
| 14 | Cameron Mud Gauge or equivalent (location optional in choke line). |
| 15 | 2" minimum 3000# W.P. flanged or threaded full opening steel gate valve, or Halliburton Lo Torc Plug valve. |



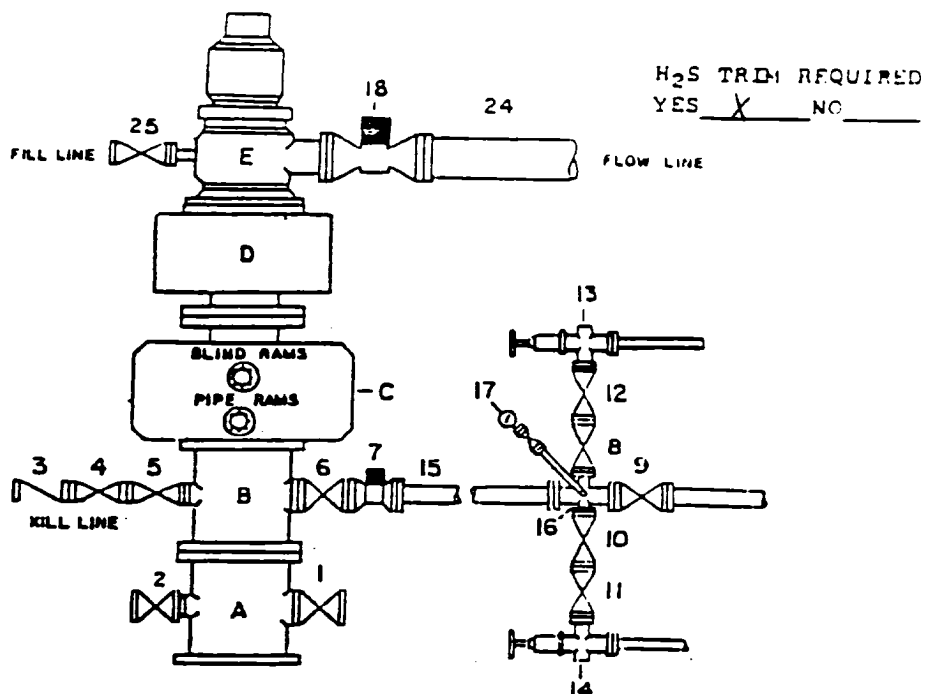
TEXACO, INC.
MIDLAND DIVISION
MIDLAND, TEXAS



SCALE	DATE	EST NO	DWG NO
DRAWN BY			
CHECKED BY			
APPROVED BY			

EXHIBIT C

DRILLING CONTROL CONDITION IV-B-5000 PSI WP



DRILLING CONTROL MATERIAL LIST - CONDITION IV - B

- A Texaco Wellhead
- B 5000# W.P. drilling spool with a minimum 2" flanged outlet for kill line and 3" minimum flanged outlet for choke line.
- C 5000# W.P. Dual ram type preventer, hydraulic operated with 1" steel, 5000# W.P. control lines.
- D 5000# W.P. Annular preventer, hydraulic operated with 1" steel, 5000# W.P. control lines.
- E Rotating Head with fill up outlet and extended Blooie line.
- 1,2,4,5, 8,10,11, 12 2" minimum 5000# W.P. flanged full opening steel gate valve, or Halliburton Lo Torc Plug valve.
- 3 2" minimum 5000# W.P. back pressure valve.
- 6,9 3" minimum 5000# W.P. flanged full opening steel gate valve, or Halliburton Lo Torc Plug valve.
- 7 3" minimum 5000# W.P. flanged hydraulic valve
- 15 3" minimum Schedule 160, Grade B, seamless line pipe
- 16 2" minimum x 3" 5000# W.P. flanged cross
- 13,14 2" minimum 5000# W.P. adjustable chokes with carbide trim.
- 17 Cameron Mud Gauge or equivalent (location in choke line optional).
- 18 6" minimum 1000# hydraulic flanged valve.
- 24 8" minimum steel flow line.
- 25 2" minimum 3000# W.P. flanged or threaded full opening steel gate valve, or Halliburton Lo Torc Plug valve.



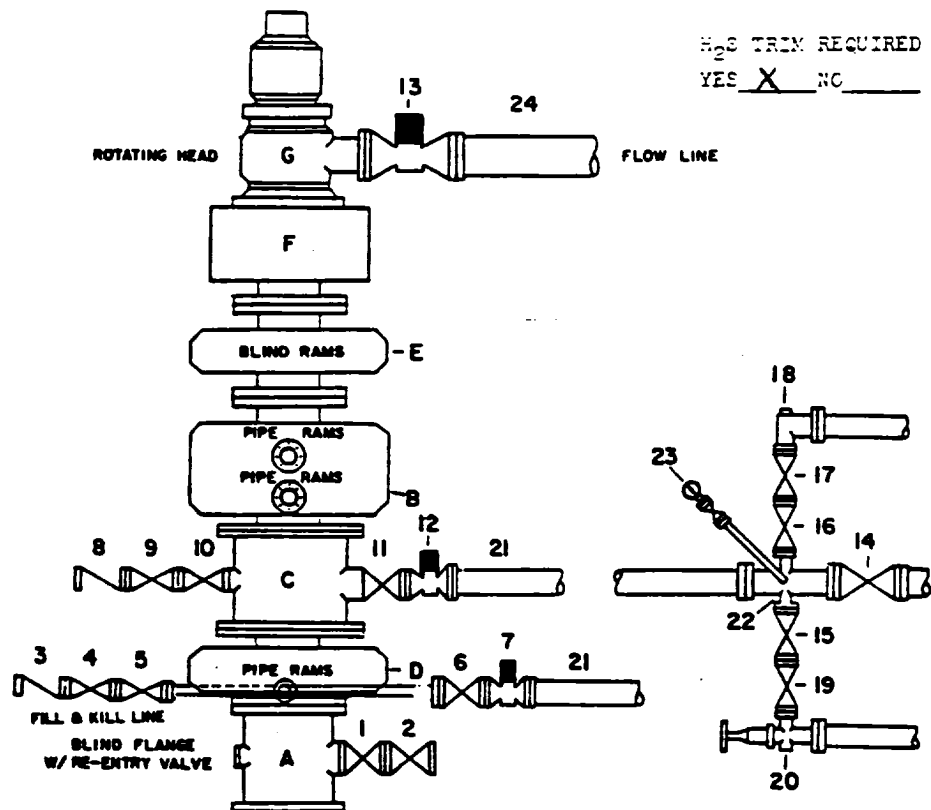
TEXACO, INC
MIDLAND DIVISION
MIDLAND, TEXAS



SCALE	DATE	EST NO	DRG NO
DRAWN BY			
CHECKED BY			
APPROVED BY			

EXHIBIT F-1

DRILLING CONTROL CONDITION V-10,000 PSI WP



H₂S TRIM REQUIRED
YES ☒ NO ☐

DRILLING CONTROL

MATERIAL LIST - CONDITION V

- | | |
|-----------------------------------|---|
| A | Texaco Wellhead |
| B | 10,000# W.P. Dual Ram Type preventer, hydraulic operated with 1" steel, 5000# W.P. control lines |
| C | 10,000# W.P. Drilling Spool with a minimum 2" flanged outlet for kill line and 4" minimum flanged outlet for choke line |
| D, E | 10,000# W.P. Single Ram type preventer, hydraulic operated with 1" steel, 5000# W.P. control lines or double ram type. |
| F | 10,000# W.P. Annular Preventer, hydraulic operated with 1" steel, 5000# W.P. control lines |
| G | When Required - Rotating Head |
| 1, 2, 4, 5, 9, 10, 15, 16, 17, 19 | 2" minimum 10,000# W.P. flanged full opening steel gate valve, or Halliburton Lo Torc Plug valve |
| 3, 8 | 2" minimum 10,000# W.P. back pressure valve |
| 6, 11, 14 | 4" minimum 10,000# W.P. flanged full opening steel gate valve |
| 7, 12 | 4" minimum 10,000# W.P. flanged full opening hydraulic valve |
| 13 | When Required - 10" minimum 1000# W.P. flanged full opening hydraulic valve |
| 21 | 4" minimum 10,000# W.P. 4130 mechanical tubing with flanged ends, or equivalent |
| 22 | 2" minimum x 4" minimum 10,000# W.P. flanged cross |
| 18 | 2" minimum 10,000# W.P. automatic choke |
| 20 | 2" minimum 10,000# W.P. adjustable choke equipped with carbide trim |
| 23 | Cameron Mud Gauge or equivalent (location in choke line optional) |
| 24 | When Required - 10" steel flow line |



TEXACO, INC.
MIDLAND DIVISION
MIDLAND, TEXAS



SCALE:	DATE:	EST. NO.:	DRG. NO.:
DRAWN BY:			
CHECKED BY:			

EXHIBIT G