

District I
PO Box 1980, Hobbs, NM 88241-1980
District II
811 S. 1st Street, Artesia, NM 88210-2834
District III
1000 Rio Brazos Rd., Aztec, NM 87410
District IV
2040 South Pacheco, Santa Fe, NM 87505

State of New Mexico
Energy, Minerals & Natural Resources Department

OIL CONSERVATION DIVISION
2040 South Pacheco
Santa Fe, NM 87505

C15F

Form C-10
Revised October 18, 199
Instructions on back
Submit to Appropriate District Office
State Lease - 4 Copies
Fee Lease - 3 Copies

☐ AMENDED REPORT

WELL LOCATION AND ACREAGE DEDICATION PLAT

¹ API Number 30-015-29307		² Pool Code 84330		³ Pool Name ROSS DRAW WOLFCAMP (GAS)	
⁴ Property Code 14828		⁵ Property Name EL PASO 23 FEDERAL			⁶ Well Number
⁷ OGRID No. 26485		⁸ Operator Name BURLINGTON RESOURCES OIL & GAS CO.			⁹ Elevation 3101'

¹⁰ Surface Location

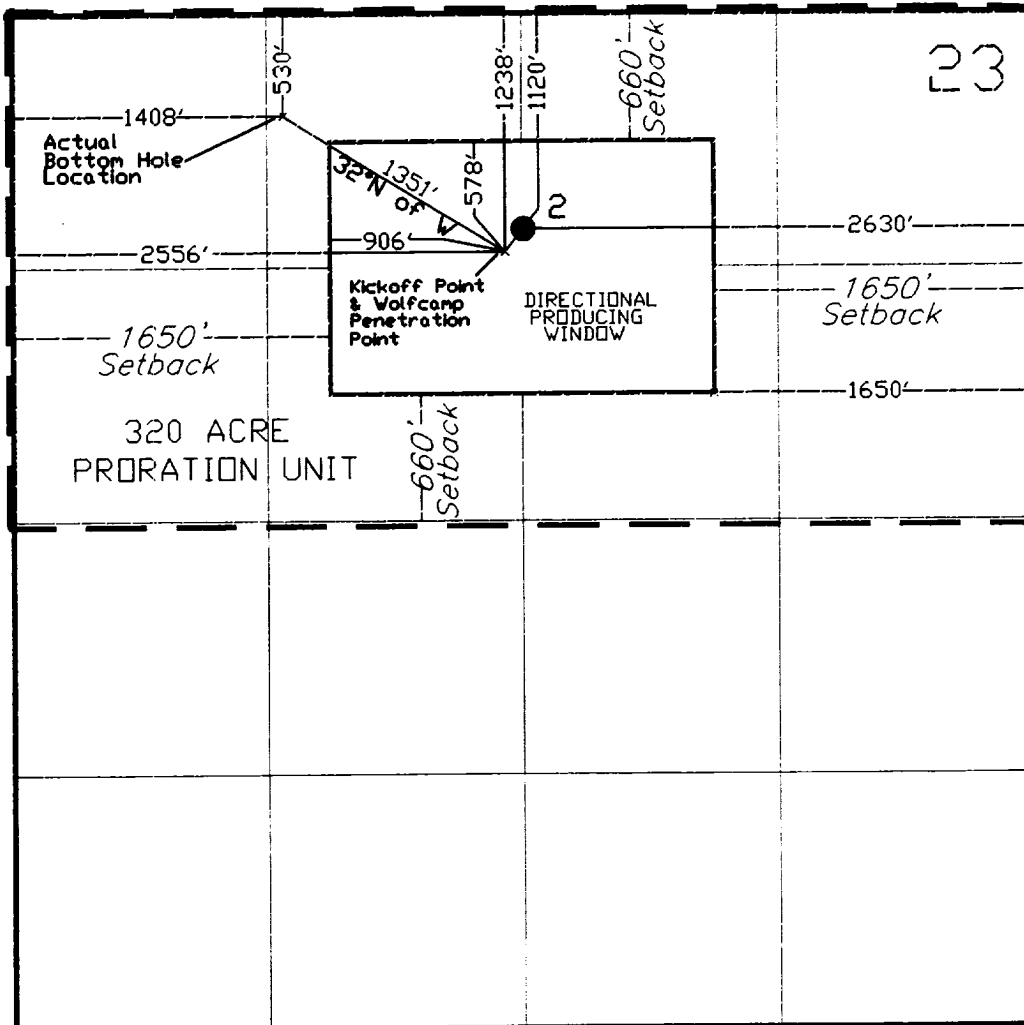
UL or lot no. B	Section 23	Township 26S	Range 30E	Lot. Idn	Feet from the 1120	North/South Line NORTH	Feet from the 2630	East/West line EAST	County EDDY
--------------------	---------------	-----------------	--------------	----------	-----------------------	---------------------------	-----------------------	------------------------	----------------

¹¹ Bottom Hole Location If Different From Surface

UL or lot no. C	Section 23	Township 26S	Range 30E	Lot. Idn	Feet from the 530	North/South Line NORTH	Feet from the 1408	East/West line WEST	County EDDY
--------------------	---------------	-----------------	--------------	----------	----------------------	---------------------------	-----------------------	------------------------	----------------

¹² Dedicated Acres 320	¹³ Joint or Infill	¹⁴ Consolidation Code	¹⁵ Order No.
--------------------------------------	-------------------------------	----------------------------------	-------------------------

NO ALLOWABLE WILL BE ASSIGNED TO THIS COMPLETION UNTIL ALL INTERESTS HAVE BEEN CONSOLIDATED
OR A NON-STANDARD UNIT HAS BEEN APPROVED BY THE DIVISION



¹⁷ OPERATOR CERTIFICATION

I hereby certify that the information contained herein is true and complete to the best of my knowledge and belief.

Maria L. Perez
Signature
MARIA L. PEREZ
Printed Name
REGULATORY REPRESENTATIVE
Title
3-30-98
Date

¹⁸ SURVEYOR CERTIFICATION

I hereby certify that the well location shown on this plat was plotted from field notes of actual surveys made by me or under my supervision, and that the same is true and correct to the best of my belief.

Date of Survey
Signature and Seal of Professional Surveyer:
Certificate Number