

DISTRICT I
P. O. Box 1980, Hobbs, NM 88240

DISTRICT II
P. O. Drawer DD, Artesia, NM 88210

DISTRICT III
1000 Rio Brazos Rd., Aztec, NM 87410

DISTRICT IV
P. O. Box 2088, Santa Fe, NM 87504-2088

State of New Mexico
Energy, Minerals and Natural Resources Department

OIL CONSERVATION DIVISION
PO Box 2088
Santa Fe, NM 87504-2088

Form C-102
Revised February 10, 1994

Instructions on back

Submit to Appropriate District Office

State Lease-4 copies
Fee Lease-3 copies

☐ AMENDED REPORT

WELL LOCATION AND ACREAGE DEDICATION PLAT

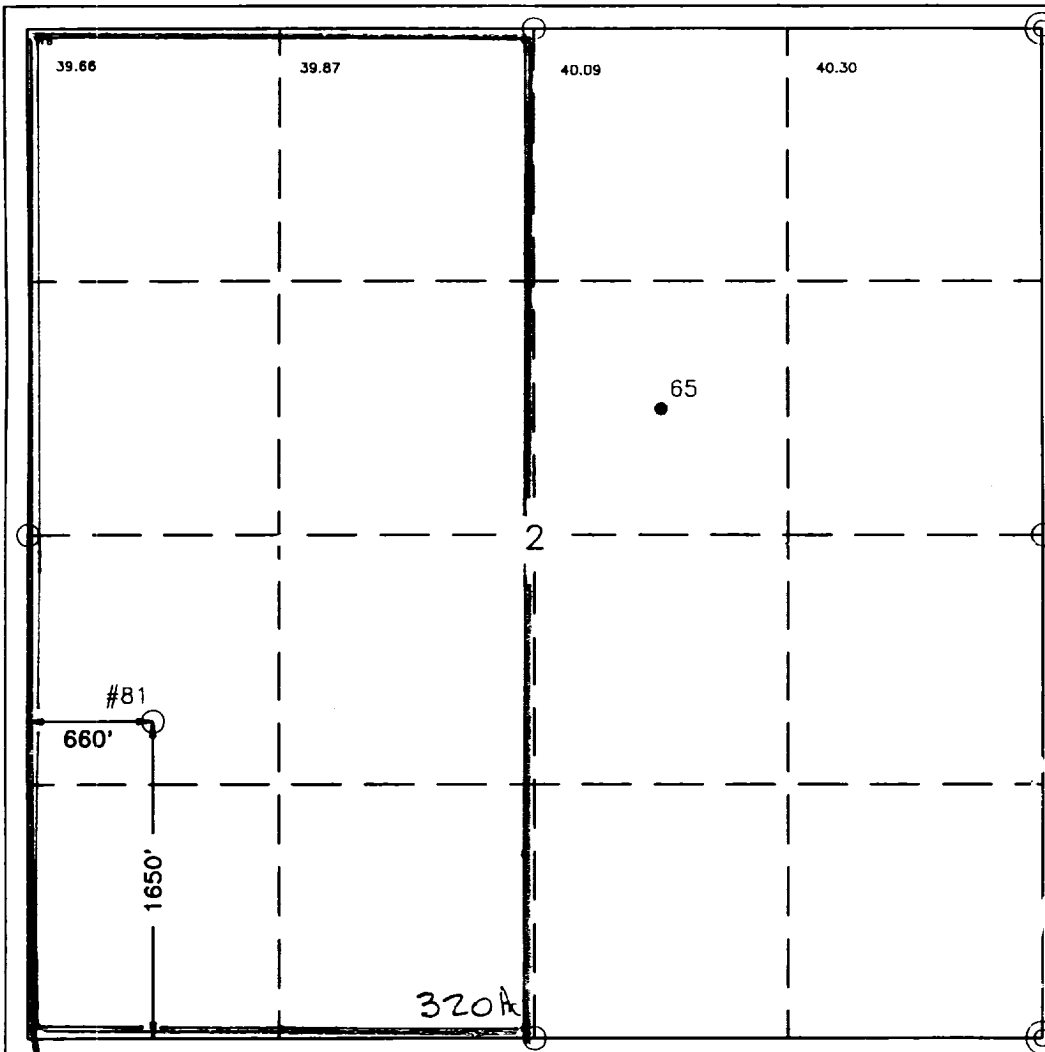
¹ API Number 30-015-29345		² Pool Code 82520		³ Pool Name Wolfcamp Lime, Wildcat	
⁴ Property Code 10920		⁵ Property Name Cotton Draw Unit			⁶ Well Number 81
⁷ GRID No. 22351		⁸ Operator Name TEXACO EXPLORATION & PRODUCTION, INC.			⁹ Elevation 3437

¹⁰ Surface Location									
UL or lot no. L	Section 2	Township 25-S	Range 31-E	Lot Idn	Feet from the 1650'	North/South line South	Feet from the 660'	East/West line West	⁷ County Eddy

¹¹ Bottom Hole Location If Different From Surface									
UL or lot no.	Section	Township	Range	Lot Idn	Feet from the	North/South line	Feet from the	East/West line	⁷ County

¹² Dedicated Acres 320	¹³ Joint or Infill	¹⁴ Consolidation Code	¹⁵ Order No.
--------------------------------------	-------------------------------	----------------------------------	-------------------------

NO ALLOWABLE WILL BE ASSIGNED TO THIS COMPLETION UNTIL ALL INTERESTS HAVE BEEN CONSOLIDATED
OR A NON-STANDARD UNIT HAS BEEN APPROVED BY THE DIVISION.



¹⁶ OPERATOR CERTIFICATION	
I hereby certify that the information contained herein is true and complete to the best of my knowledge and belief.	
Signature <i>C. Wade Howard</i>	
Printed Name C. Wade Howard	
Position Engineer's Assistant	
Company Texaco Expl. & Prod. Inc.	
Date January 17, 1997	
¹⁷ SURVEYOR CERTIFICATION	
I hereby certify that the well location shown on this plat was plotted from field notes of actual surveys made by me or under my supervision, and that the same is true and correct to the best of my knowledge and belief.	
Date Surveyed January 15, 1997	
Signature & Seal of Professional Surveyor <i>John S. Piper</i>	
Certificate No. 7254 John S. Piper	
Sheet 8 of 8	