

## WELL LOCATION AND ACREAGE DEDICATION PLAT

Supersedes  
Effective

All distances must be from the outer boundaries of the Section

Bettis, Boyle & Stovall			Lessee		Sotol Federal		Well No. -2-	
Letter K	Section 1	Township 24 South	Range 31 East	County Eddy				

1. Section Location of Well:

1980 feet from the south line and	1980 feet from the west line	Dedicated Acreage
3532'	Wildcat-Delaware	40

Outline the acreage dedicated to the subject well by colored pencil or hatchure marks on the plat below.

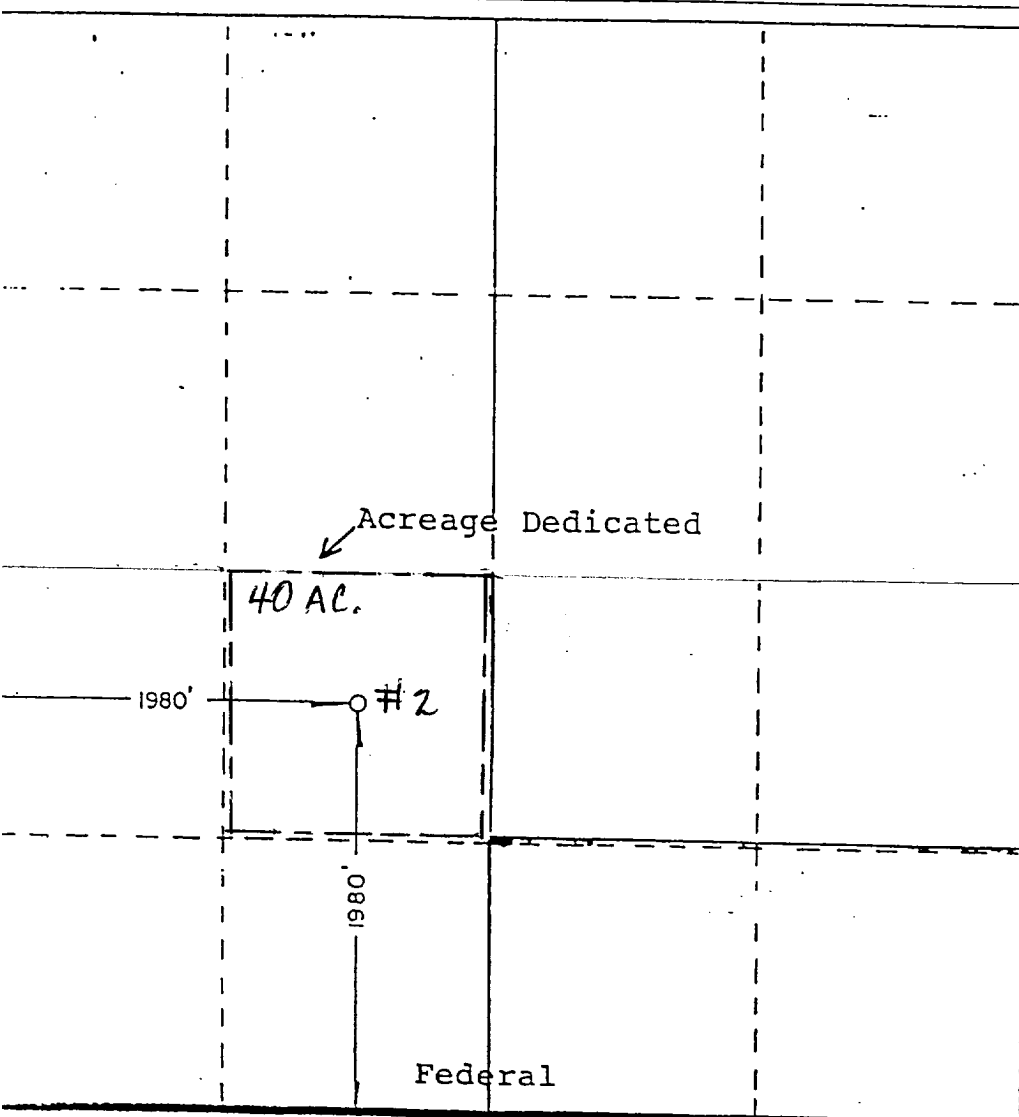
If more than one lease is dedicated to the well, outline each and identify the ownership thereof (both as to working interest and royalty).

If more than one lease of different ownership is dedicated to the well, have the interests of all owners been consolidated by communitization, unitization, force-pooling, etc?

☐ Yes ☒ No If answer is "yes," type of consolidation

If answer is "no," list the owners and tract descriptions which have actually been consolidated. (Use reverse side of this form if necessary.)

No allowable will be assigned to the well until all interests have been consolidated (by communitization, unitization, forced-pooling, or otherwise) or until a non-standard unit, eliminating such interests, has been approved by the Commission.



## CERTIFICATION

I hereby certify that the information contained herein is true and complete to the best of my knowledge and belief.

Name  
G. Bannantine  
Position  
Regulatory Group Mgr.  
Company  
The Superior Oil Co.  
Date  
October 19, 1981

I hereby certify that the well location shown on this plat was plotted from field notes of actual surveys made by me under my supervision, and that the same is true and correct to the best of my knowledge and belief.

Date Surveyed

10 - 7 - 81

Registered Professional Engineer  
and/or Land Surveyor

Certificate No. JGHM N. 1000  
DARRICK E. H. 1000