

Submit 3 Copies
to Appropriate
DISTRICT I

P. O. Box 1980, Hobbs, NM 88240

DISTRICT II

811 S. 1st Street, Artesia, NM 88210-283

DISTRICT III

1000 Rio Brazos Rd., Aztec, NM 87410

DISTRICT IV

P. O. Box 2088, Santa Fe, NM 87504-2088

State of New Mexico
Energy, Minerals and Natural Resources Department

OIL CONSERVATION DIVISION

P. O. Box 2088
Santa Fe, New Mexico 87504-2088

Form C-101
Revised February 10, 1994

Instructions on back

Submit to Appropriate District Office

State Lease - 6 Copies

Fee Lease - 5 Copies

JUN 24 1997

☐ AMENDED REPORT

APPLICATION FOR PERMIT TO DRILL, RE-ENTER, DEEPEN, PLUGBACK, OR ADD A ZONE

1. Operator Name and Address Bass Enterprises Production Co. P O Box 2760 Midland, Texas 79702-2760 915-683-2277		2. OGRID Number 001801
3. API Number 30-015-29675		
4. Property Code 8-40685 1796	5. Property Name Poker Lake Unit	6. Well No. 128

7. Surface Location

UL or lot no.	Section	Township	Range	Lot Idn	Feet from the	North/South line	Feet from the	East/West line	County
K	36	24S	30E		1980	South	1980	West	Eddy

8. Proposed Bottom Hole Location If Different From Surface

UL or lot no.	Section	Township	Range	Lot Idn	Feet from the	North/South line	Feet from the	East/West line	County

9. Proposed Pool 1 Poker Lake (Delaware), SW	96047	10. Proposed Pool 2
---	-------	---------------------

11. Work Type Code N	12. Well Type Code O	13. Cable/Rotary R	14. Lease Type Code S	15. Ground Level Elevation 3448
16. Multiple No	17. Proposed Depth 8350	18. Formation Delaware	19. Contractor Lakota	20. Spud Date Upon Approval

21. Proposed Casing and Cement Program

Hole Size	Casing Size	Casing weight/foot	Setting Depth	Sacks of Cement	Estimated TOC
1) 14-3/4"	11-3/4"	42#	850'	500	Surface
2) 11"	8-5/8"	28# & 32#	4180'	1000	650'
3) 7-7/8"	5-1/2"	15.50# & 17#	8350'	450	5700' (Est)

22. Described the proposed program. If this application is to DEEPEN or PLUG BACK give the data on the present productive zone and proposed new productive zone. Describe the blowout prevention program, if any. Use additional sheets if necessary.

18 Hours WOC for 11 3/4" & 8 5/8" casing.

- 1) Surface casing to be set \pm 100' above T/Salt in Rustler Anhydrite.
- 2) Intermediate casing to be set in the Lamar Lime. An attempt will be made to cement to surface. If cement is not circulated to surface, a temperature survey will be run to locate the TOC. No remedial operations will be conducted if a minimum of 200' fill inside 11-3/4" X 8-5/8" annulus.
- 3) Production casing to be cemented 500' above the upper most payzone.

Drilling procedure, BOP diagram, anticipated tops attached.

This well is outside the R-111 Potash Areas.

23. I hereby certify that the information given above is true and complete to the of my knowledge and belief.

Signature: *William R. Dannels*

Printed Name: William R. Dannels

Title: Division Drilling Supt.

Date: 6/18/97

Phone: 915-683-2277

OIL CONSERVATION DIVISION

Approved by: *Jim W. Burns* BGA

Title: *District Supervisor*

Approval Date: *6-24-97* / expires *6-24-98*

Conditions of Approval:

Attached

RECEIVED
JUN 20 A 9:58
OFFICE OF LAND MANAGEMENT
SANTA FE, NEW MEXICO

*Posted ID-1
NL & API
7-27-97*

2895-210-02

2895

2895-210-02

2895

DISTRICT I
P.O. Box 1980, Hobbs, NM 88240

State of New Mexico
Energy, Minerals and Natural Resources Department

Form C-102
Revised February 10, 1994
Instruction on back
Submit to Appropriate District Office
State Lease - 4 Copies
Fee Lease - 3 Copies

DISTRICT II
P.O. Drawer DD, Artesia, NM 88210

DISTRICT III
1000 Rio Brazos Rd., Aztec, NM 87410

OIL CONSERVATION DIVISION

P.O. Box 2088
Santa Fe, New Mexico 87504-2088

☐ AMENDED REPORT

WELL LOCATION AND ACREAGE DEDICATION PLAT

API Number	Pool Code	Pool Name
		Poker Lake (Delaware), SW
Property Code B-10685	Property Name Poker Lake Unit	Well Number 128
OGRID No. 001801	Operator Name Bass Enterprises Production Company	Elevation 3448'

Surface Location

UL or lot No.	Section	Township	Range	Lot Idn	Feet from the	North/South line	Feet from the	East/West line	County
K	36	24 S	30 E		1980	South	1980	West	Eddy

Bottom Hole Location If Different From Surface

UL or lot No.	Section	Township	Range	Lot Idn	Feet from the	North/South line	Feet from the	East/West line	County
Dedicated Acres 40	Joint or Infill Infill	Consolidation Code	Order No.						

NO ALLOWABLE WILL BE ASSIGNED TO THIS COMPLETION UNTIL ALL INTERESTS HAVE BEEN CONSOLIDATED
OR A NON-STANDARD UNIT HAS BEEN APPROVED BY THE DIVISION

	<p>OPERATOR CERTIFICATION</p> <p>I hereby certify the the information contained herein is true and complete to the best of my knowledge and belief.</p> <p>Signature</p> <p>William R. Dannels</p> <p>Printed Name</p> <p>Division Drilling Supt.</p> <p>Title</p> <p>June 12, 1997</p> <p>Date</p>
	<p>SURVEYOR CERTIFICATION</p> <p>I hereby certify that the well location shown on this plat was plotted from field notes of actual surveys made by me or under my supervision and that the same is true and correct to the best of my belief.</p> <p>June 10, 1997</p> <p>Date Surveyed</p> <p>Signature & Seal of Professional Surveyor</p> <p>W.O. No. 7343a</p> <p>Certificate No. Gary L. Jones 7977</p> <p>BASIN SURVEYORS</p>

SECTION 36, TOWNSHIP 24 SOUTH, RANGE 30 EAST, N.M.P.M.,
EDDY COUNTY, NEW MEXICO.

Poker Lake
Unit #114

Proposed Lease Road
1034'

3450.0'

400'

3447.6'

FENCE

100' NORTH
OFF SET

Bass Enterprises Production Co.
Poker Lake Unit #128
ELEV. - 3448'

100' WEST
OFF SET

100' EAST
OFF SET

100' SOUTH
OFF SET

400'

400'

3446.4'

400'

3445.6'

100 0 100 200 FEET

SCALE: 1" = 100'

BASS ENTERPRISES PRODUCTION CO.

REF: Poker Lake Unit No. 128 / Well Pad Top

THE POKER LAKE UNIT No. 128 LOCATED 1980' FROM THE
SOUTH LINE AND 1980' FROM THE WEST LINE OF
SECTION 36, TOWNSHIP 24 SOUTH, RANGE 30 EAST,
N.M.P.M., EDDY COUNTY, NEW MEXICO.

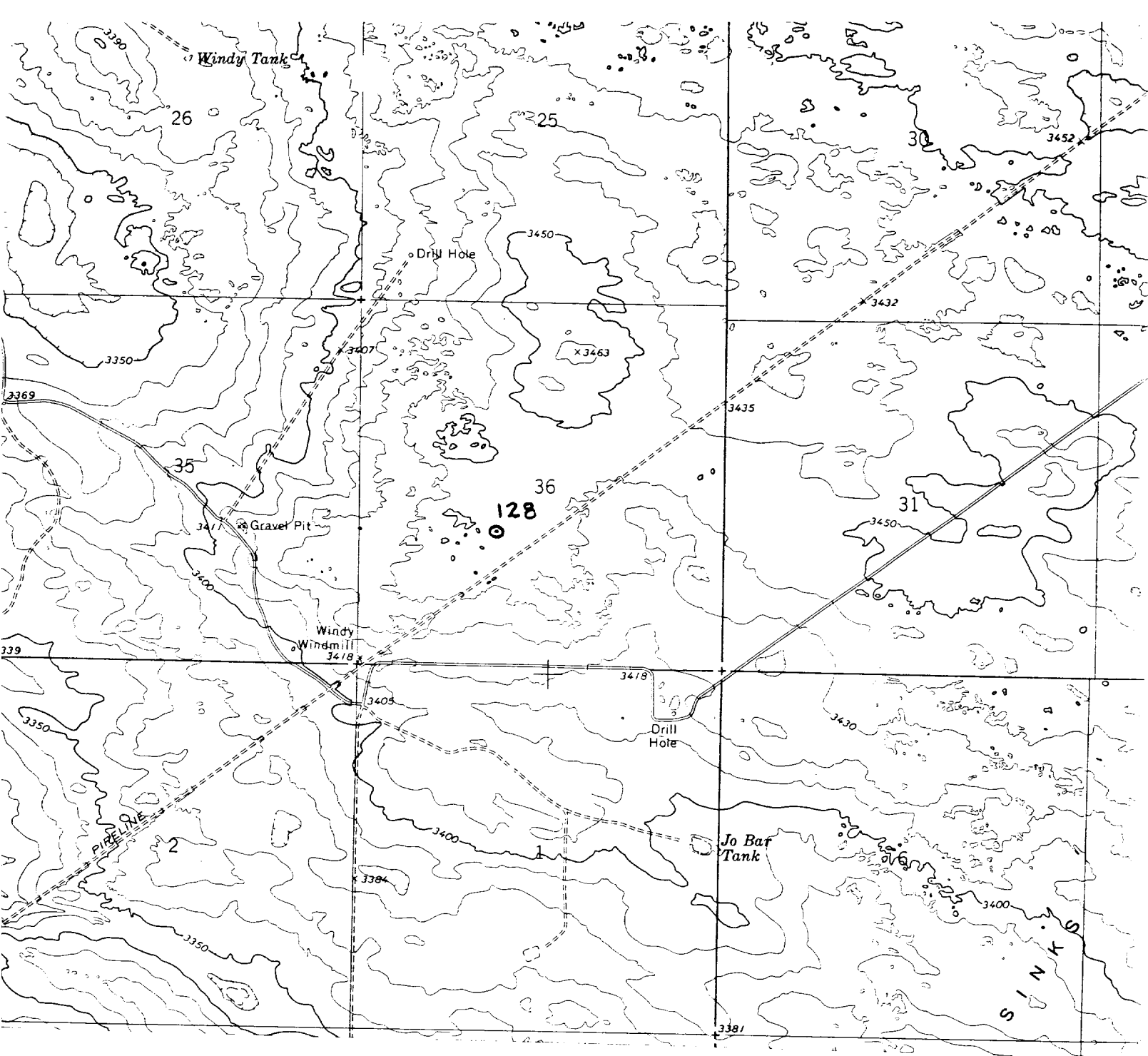
BASIN SURVEYS P.O. BOX 1786-HOBBS, NEW MEXICO

W.O. Number: 7343 Drawn By: S.C. NICHOLS

Date: 06-11-97 Disk: SCN #35 - 7343AA.DWG

Survey Date: 06-10-97

Sheet 1 of 1 Sheets



Bass Enterprises Production Company
Poker Lake Unit No. 128
 1980' FSL & 1980' FWL
 Sec. 36, T-24-S, R-30-E,
 Eddy County, New Mexico.



SCALE: 1"=2000'

BASIN SURVEYS P.O. BOX 1786-HOBBS, NEW MEXICO

2000' 0 2000' 4000 Feet

W.O. Number: 7343	Drawn By: S.C. Nichols	Survey Date: 06-10-97	Sheet 1 of 1 Sheets
-------------------	------------------------	-----------------------	---------------------

**EIGHT POINT DRILLING PROGRAM
BASS ENTERPRISES PRODUCTION CO.**

NAME OF WELL: POKER LAKE UNIT NO. 128

LEGAL DESCRIPTION - SURFACE: 1980' FSL & 1980' FWL, Section 36, T-24-S, R-30-E, Eddy County, New Mexico.

POINT 1: ESTIMATED FORMATION TOPS

(See No. 2 Below)

POINT 2: WATER, OIL, GAS AND/OR MINERAL BEARING FORMATIONS

Anticipated Formation Tops: KB 3464' (est)
GL 3448'

<u>FORMATION</u>	<u>ESTIMATED TOP FROM KB</u>	<u>ESTIMATED SUBSEA TOP</u>	<u>BEARING</u>
T/Rustler	664'	+2800'	Barren
T/Salt	954'	+2510'	Barren
B/Salt	3944'	- 480'	Barren
T/Lamar Lime	4169'	- 705'	Oil/Gas
T/Ramsey Sand	4204'	- 740'	Oil/Gas
T/Lwr Cherry Canyon Pay	6241'	- 2777'	Oil/Gas
T/#103 Show Zone	6564'	- 3100'	Oil/Gas
T/Livingston Ridge	6608'	- 3144'	Oil/Gas
T/JRU #13 Zone	6727'	- 3263'	Oil/Gas
T/Lwr Brushy Canyon	7741'	- 4277'	Oil/Gas
T/Bone Spring Lime	8023'	- 4559'	Oil/Gas
TD	8350'	- 4889'	

POINT 3: CASING PROGRAM

<u>TYPE</u>	<u>INTERVALS</u>	<u>PURPOSE</u>	<u>CONDITION</u>
11-3/4", 42#, WC-40, ST&C	0' - 850'	Surface	New
8-5/8", 28# & 32#, WC-50, ST&C	0' - 4180'	Intermediate	New
5-1/2", 17# & 15.50#, K55, LT&C	0' - 8350'	Production	New

POINT 4: PRESSURE CONTROL EQUIPMENT (SEE ATTACHED DIAGRAM)

A BOP equivalent to Diagram 1 will be nipped up on the surface casing head. When testing, the BOP stack, choke, kill lines, kelly cocks, inside BOP, etc. will be hydro-tested to 70% of internal yield of the casing. In addition to the rated working pressure test, a low pressure (200 psi) test will be required. These tests will be performed:

- a) Upon installation
- b) After any component changes
- c) Twenty days after a previous test
- d) As required by well conditions

Con't...

POINT 4: PRESSURE CONTROL EQUIPMENT (SEE ATTACHED DIAGRAM)

A function test of pipe and blind rams to insure that the preventers are operating correctly will be performed on each trip. A function test is required only a minimum of once every 24 hours. See the attached diagrams for the minimum criteria for the choke manifold.

POINT 5: MUD PROGRAM

DEPTH	MUD TYPE	WEIGHT	FV	PV	YP	FL	Ph
0' - 850'	FW Spud	8.4 - 9.0	38-45	NC	NC	NC	9-10
850' - 4180'	Brine	9.8 - 10.2	28-32	NC	NC	NC	9-10
4180' - 6100'	FW	8.4 - 8.8	28-30	NC	NC	NC	10
6100' - 8350'	FW/Starch	8.6 - 9.0	30-32	NC	NC	<100	10

POINT 6: TECHNICAL STAGES OF OPERATION

A) TESTING

None anticipated.

B) LOGGING

GR-CNL from 4180' to surface.
Platform Express/AIT from TD to 4180'.

C) CONVENTIONAL CORING

None anticipated.

D) CEMENT

INTERVAL SURFACE	AMOUNT SXS	FT OF FILL	TYPE	GALS/SX	PPG	FT ³ /SX
0-500'	220 (100% excess circ to surface)	500	Class C + 6% gel + 1/4 pps Cellophane	10.96	12.39	2.00
500-850'	280 (100% excess circ to surface)	350	Class "C" + 2% CaCl ₂	6.32	14.8	1.32
INTERMEDIATE						
0-3700'	800	3700	35/65 Poz C + 6% gel + 5% Salt + 1/4# Cellophane	11.84	12.4	2.14
3700-4180'	200	480	Class C	6.32	14.8	1.32
PRODUCTION						
1st Stage						
7000-8350'	225	1350	Class H + 0.3% D13 + 3% D44 + 1/4 gal/sk D155 + 0.05 gal/sk D604AM	8.80	14.0	1.66
2nd Stage						
TAIL						
5700-7000'	250	1300	Class "H" + 0.3% D13 + 3% D44 + 1/4 gals/sx D155 + 0.05 gals/sx D604AM	8.80	14.0	1.66

E) **DIRECTIONAL DRILLING**

No directional services anticipated.

POINT 7: ANTICIPATED RESERVOIR CONDITIONS

Normal pressured formations are anticipated throughout this well.

POINT 8: OTHER PERTINENT INFORMATION

A) **Auxiliary Equipment**

Upper and lower kelly cocks. Full opening stab in valve on the rig floor.

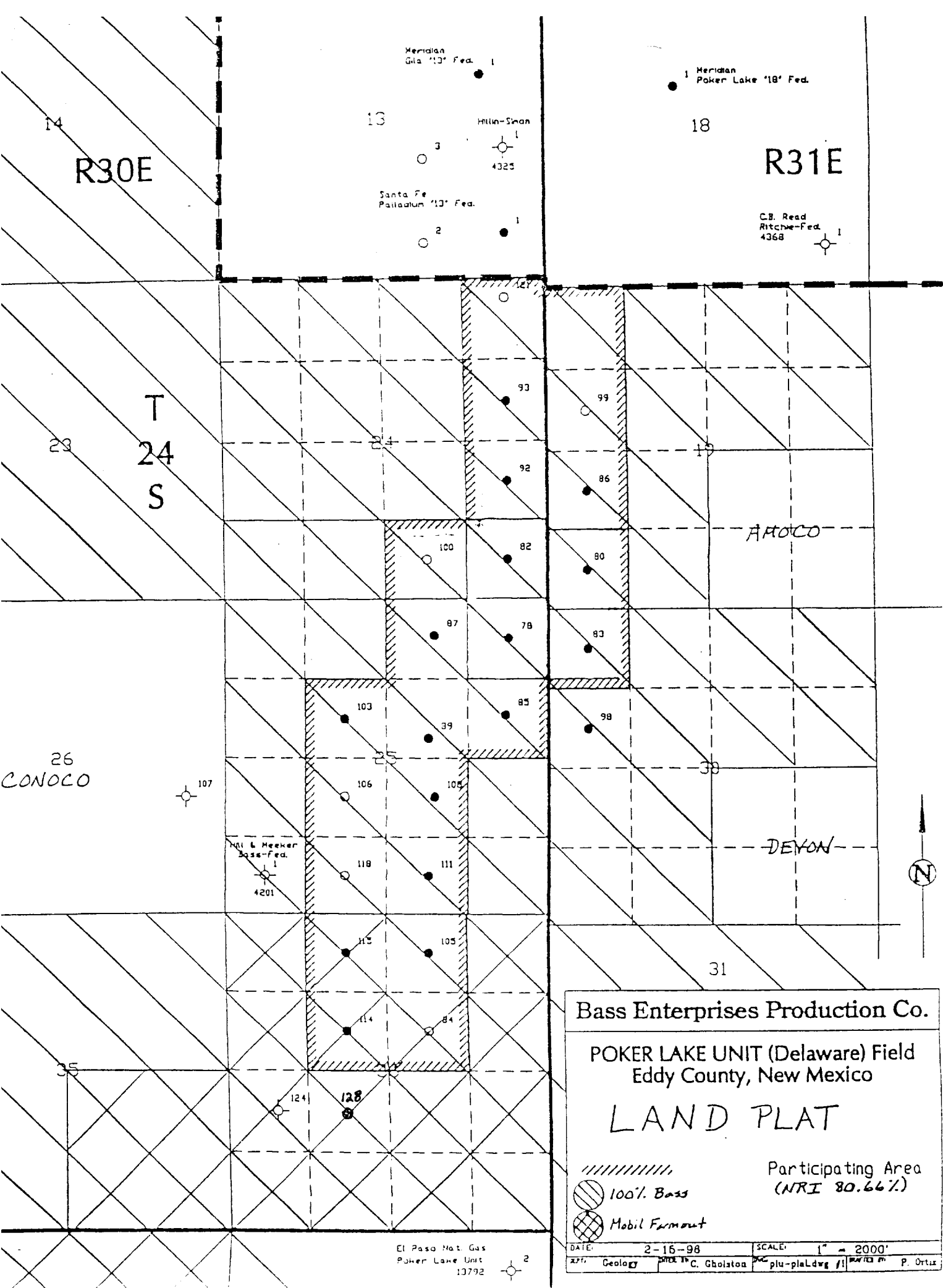
B) **Anticipated Starting Date**

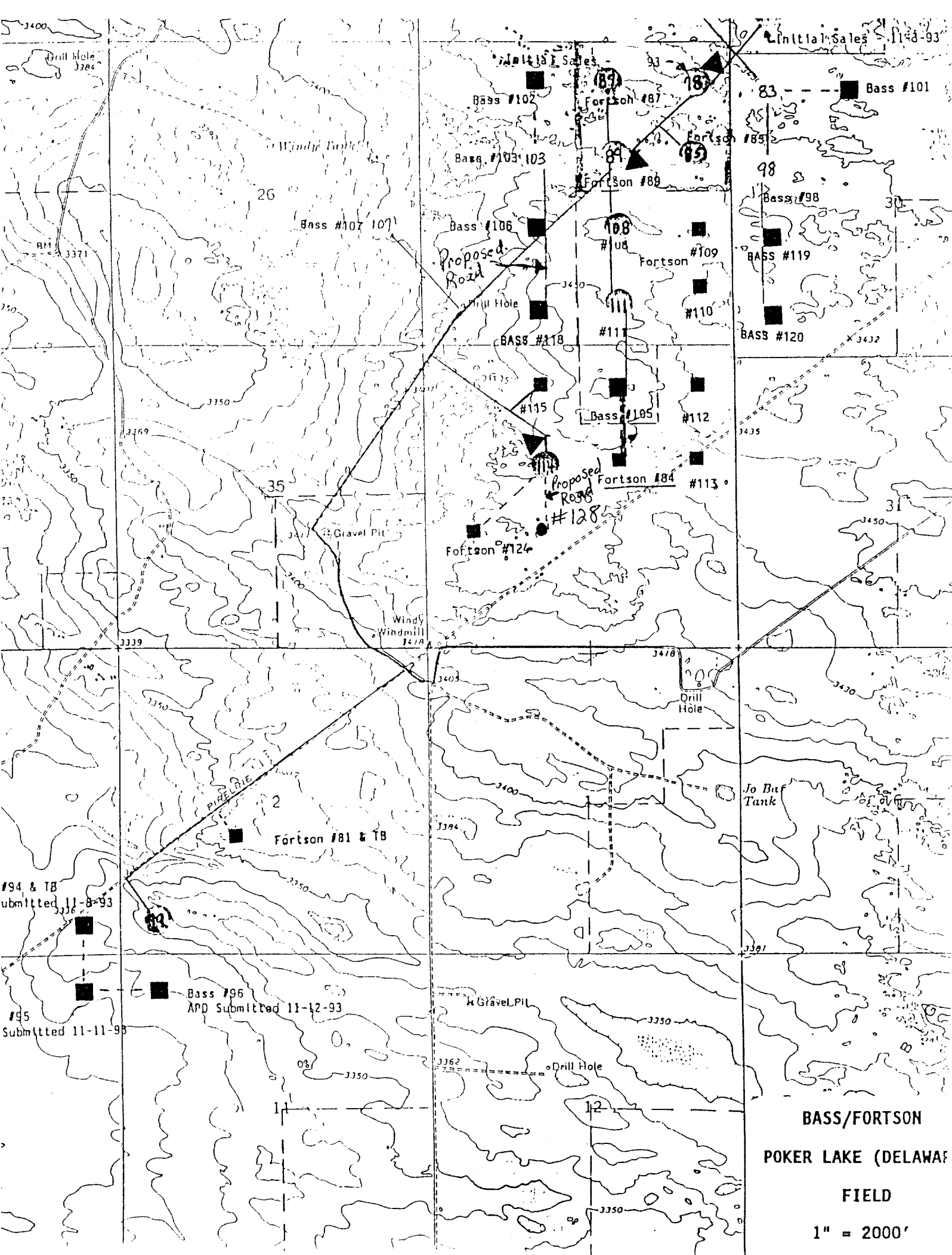
Upon approval

16 days drilling operations

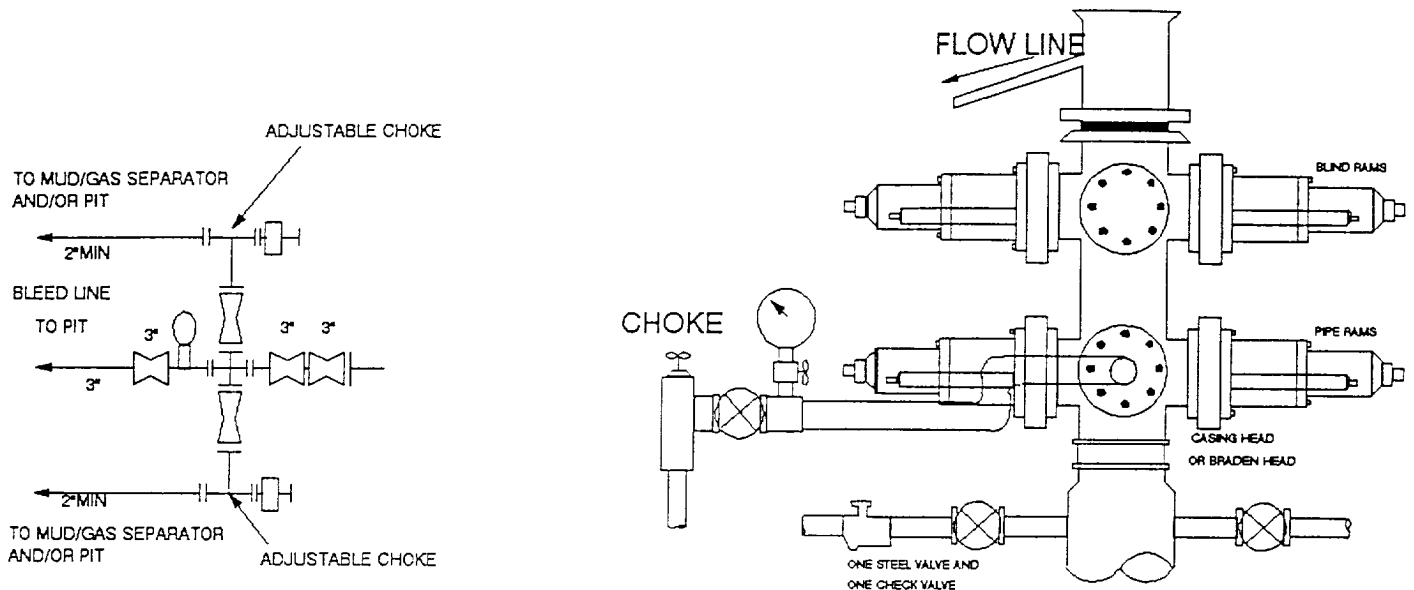
6 days completion operations

FDC/mac
06/18/97





3000 PSI WP



THE FOLLOWING CONSTITUTE MINIMUM BLOWOUT PREVENTER REQUIREMENTS

- A. One double gate blowout preventer with lower rams for pipe and upper rams blind, all hydraulically controlled.
- B. Opening on preventers between rams to be flanged, studded or clamped and at least two inches in diameter.
- C. All connections from operating manifold to preventers to be all steel hose or tube a minimum of one inch in diameter.
- D. The available closing pressure shall be at least 15% in excess of that required with sufficient volume to operate (close, open, and re-close) the preventers.
- E. All connections to and from preventers to have a pressure rating equivalent to that of the BOP's.
- F. Manual controls to be installed before drilling cement plug.
- G. Valve to control flow through drill pipe to be located on rig floor.
- H. All chokes will be adjustable. Choke spool may be used between rams.