

Submit 3 Copies

to Appropriate

DISTRICT I

P. O. Box 1980, Hobbs, NM 88240

DISTRICT II

811 S. 1st Street, Artesia, NM 88210-283

DISTRICT III

1000 Rio Brazos Rd., Aztec, NM 87410

DISTRICT IV

P. O. Box 2088, Santa Fe, NM 87504-2088

State of New Mexico
Energy, Minerals and Natural Resources Department

OIL CONSERVATION DIVISION

P. O. Box 2088
Santa Fe, New Mexico 87504-2088

Form C-101

Revised February 10, 1994

Instructions on back

Submit to Appropriate District Office

State Lease - 6 Copies

Fee Lease - 5 Copies

FEB 10 1998
RECEIVED
OCD - ARTESIA

AMENDED REPORT**APPLICATION FOR PERMIT TO DRILL, RE-ENTER, DEEPEN, PLUGBACK, OR ADD A ZONE**

1. Operator Name and Address Bass Enterprises Production Co. P O Box 2760 Midland, Texas 79702-2760 915-683-2277		2. OGRID Number 001801
4. Property Code 1796		3. API Number 30-015-30059
5. Property Name Poker Lake Unit		6. Well No. 143

7. Surface Location

UL or lot no.	Section	Township	Range	Lot Idn	Feet from the	North/South line	Feet from the	East/West line	County
J	36	24S	30E		1980	South	1980	East	Eddy

8. Proposed Bottom Hole Location If Different From Surface

UL or lot no.	Section	Township	Range	Lot Idn	Feet from the	North/South line	Feet from the	East/West line	County

9. Proposed Pool 1 Poker Lake (Delaware), SW	10. Proposed Pool 2
---	---------------------

11. Work Type Code N	12. Well Type Code O	13. Cable/Rotary R	14. Lease Type Code State	15. Ground Level Elevation 3440'
16. Multiple N	17. Proposed Depth 8300'	18. Formation Bone Spring	19. Contractor Lakota Drilling	20. Spud Date March 24, 1998

21. Proposed Casing and Cement Program

Hole Size	Casing Size	Casing weight/foot	Setting Depth	Sacks of Cement	Estimated TOC
11"	8-5/8"	28#	850'	280	Surface
7-7/8"	5-1/2"	15.5# & 17#	8300'	445	TOC @ 5650' (500' above the upper most hydrocarbon bearing zone)

22. Describe the proposed program. If this application is to DEEPEN or PLUG BACK give the data on the present productive zone and proposed new productive zone. Describe the blowout prevention program, if any. Use additional sheets if necessary.

This well is outside the R-111-P Potash Area.

The surface casing will be set into the Rustler below all fresh water sands.

Cement will be placed 500' above the upper most hydrocarbon bearing zone.

Post ID-1
2-6-98
API & LAC

23. I hereby certify that the information given above is true and complete to the best of my knowledge and belief.

Signature: *William R. Dannel*

Printed Name: William R. Dannels

Title: Division Drilling Supt.

Date: January 28, 1998

Phone: (915) 683-2277

OIL CONSERVATION DIVISION

Approved by: **ORIGINAL SIGNED BY TIM W. GUM**
Title: **DISTRICT II SUPERVISOR**

Approval Date: **FEB 4 1998**

Conditions of Approval:

Attached **EXPIRES 2-4-1999**

DISTRICT I
P.O. Box 1980, Hobbs, NM 88240

DISTRICT II
P.O. Drawer DD, Artesia, NM 88210

DISTRICT III
1000 Rio Brazos Rd., Aztec, NM 87410

State of New Mexico
Energy, Minerals and Natural Resources Department

Form C-102
Revised February 10, 1994
Instruction on back
Submit to Appropriate District Office
State Lease - 4 Copies
Fee Lease - 3 Copies

OIL CONSERVATION DIVISION

P.O. Box 2088
Santa Fe, New Mexico 87504-2088

☐ AMENDED REPORT

WELL LOCATION AND ACREAGE DEDICATION PLAT

API Number	Pool Code	Pool Name
		Poker Lake (Delaware), SW
Property Code 1796	Property Name Poker Lake Unit	Well Number 143
OGRID No. 001801	Operator Name Bass Enterprises Production Company	Elevation 3440'

Surface Location

UL or lot No.	Section	Township	Range	Lot Idn	Feet from the	North/South line	Feet from the	East/West line	County
J	36	24 S	30 E		1980	South	1980	East	Eddy

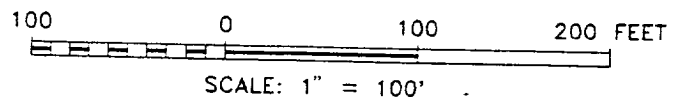
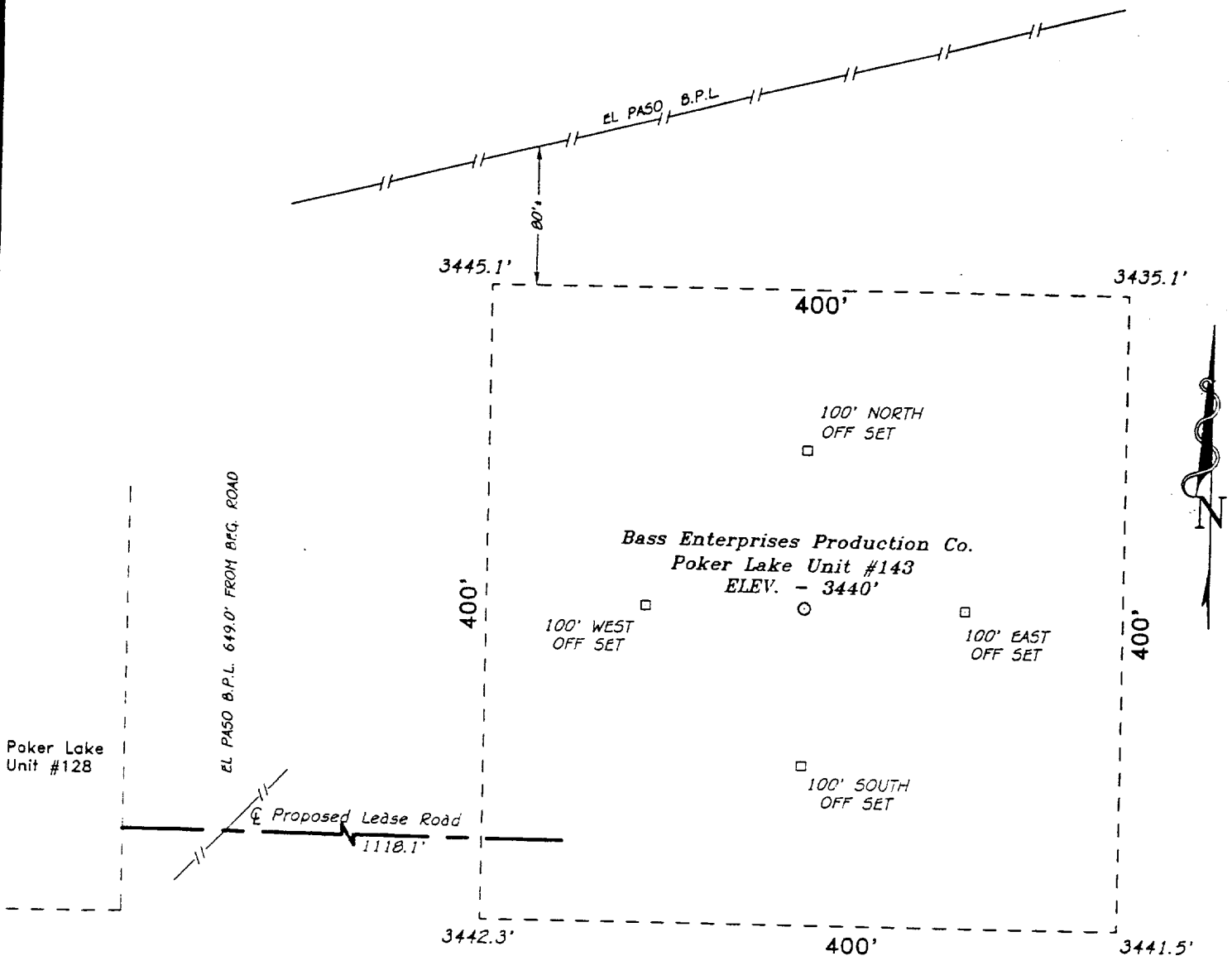
Bottom Hole Location If Different From Surface

UL or lot No.	Section	Township	Range	Lot Idn	Feet from the	North/South line	Feet from the	East/West line	County
Dedicated Acres 40	Joint or Infill N	Consolidation Code	Order No.						

NO ALLOWABLE WILL BE ASSIGNED TO THIS COMPLETION UNTIL ALL INTERESTS HAVE BEEN CONSOLIDATED
OR A NON-STANDARD UNIT HAS BEEN APPROVED BY THE DIVISION

				OPERATOR CERTIFICATION I hereby certify the the information contained herein is true and complete to the best of my knowledge and belief. <u>William R. Dannels</u> Signature William R. Dannels Printed Name Division Drlg. Supt. Title 1-28-98 Date	
				SURVEYOR CERTIFICATION I hereby certify that the well location shown on this plat was plotted from field notes of actual surveys made by me or under my supervision and that the same is true and correct to the best of my belief. January 19, 1998 Date Surveyed Signature & Seal of Professional Surveyor 7977 Certificate No. 8023 Professional Surveyor BASIN SURVEYS	

SECTION 36, TOWN 24 SOUTH, RANGE 30 EAST, N.M.P.M.,
EDDY COUNTY, NEW MEXICO.



Bass Enterprises Production Co.

REF: Poker Lake Unit #143/ Well Pad Topo

THE POKER LAKE UNIT No. 143 LOCATED 1980' FROM
THE SOUTH LINE AND 1980' FROM THE EAST LINE OF
SECTION 36, TOWNSHIP 24 SOUTH, RANGE 30 EAST,
N.M.P.M., EDDY COUNTY, NEW MEXICO.

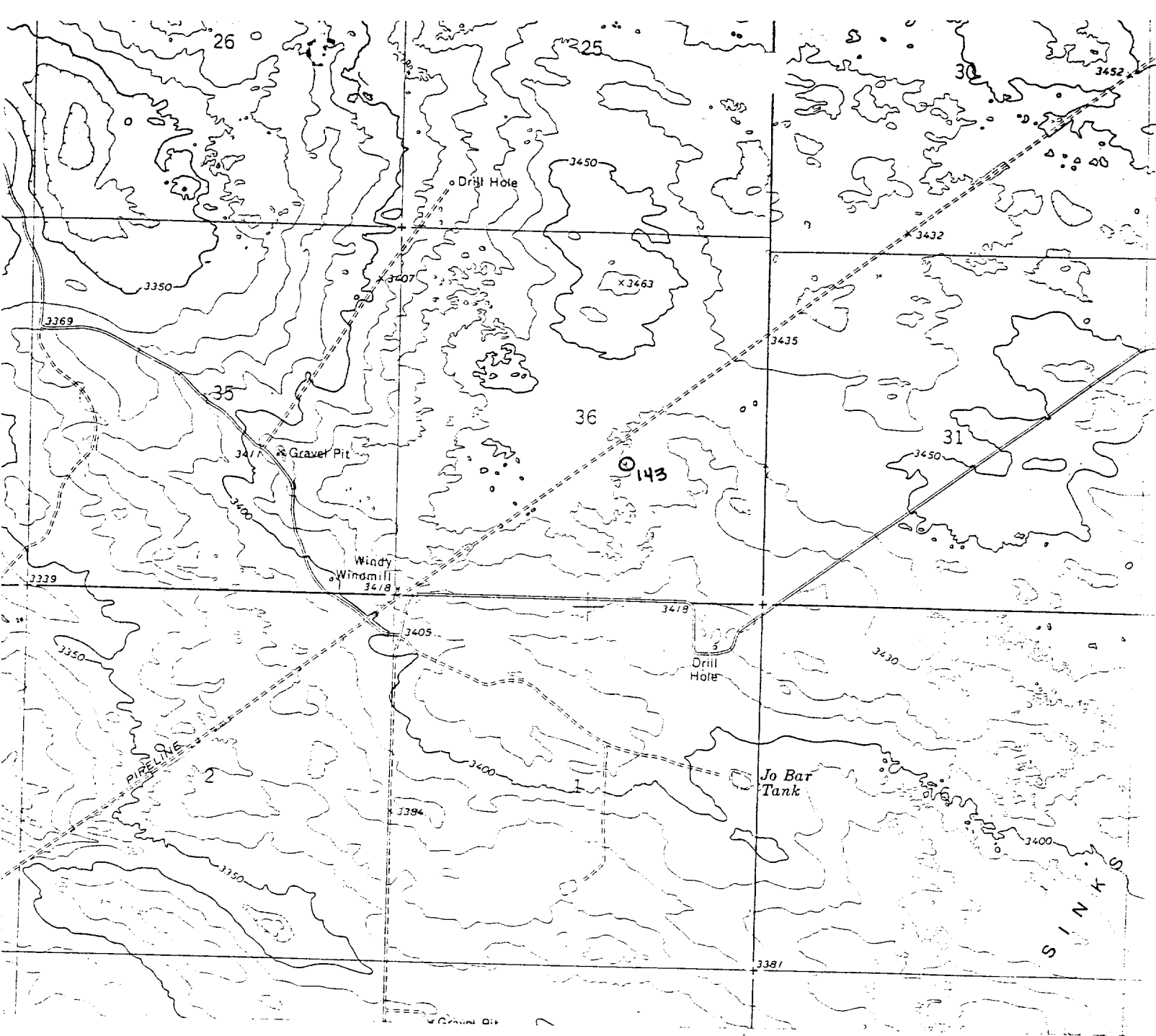
BASIN SURVEYS P.O. BOX 1786-HOBBS, NEW MEXICO

N.O. Number: 8023 Drawn By: S.C. NICHOLS

Date: 01-20-98 Disk: SCN #39 - 8023AA.DWG

Survey Date: 01-19-98

Sheet 1 of 1 Sheets



Bass Enterprises Production Co.
 Poker Lake Unit No. 143
 1980' FSL & 1980' FEL
 Sec. 36, T-24-S, R-30-E,
 Eddy County, New Mexico.

SCALE: 1"=2000'

BASIN SURVEYS

P.O. BOX 1786-HOBBS, NEW MEXICO



N.O. Number: 8023	Drawn By: S.C. Nichols	Survey Date: 01-19-98	Sheet 1 of 1 Sheets
-------------------	------------------------	-----------------------	---------------------

**EIGHT POINT DRILLING PROGRAM
BASS ENTERPRISES PRODUCTION CO.**

NAME OF WELL: POKER LAKE UNIT #143

LEGAL DESCRIPTION - SURFACE: 1980' FSL & 1980' FEL, Section 36, T-24-S, R-30-E, Eddy County, New Mexico.

POINT 1: ESTIMATED FORMATION TOPS

(See No. 2 Below)

POINT 2: WATER, OIL, GAS AND/OR MINERAL BEARING FORMATIONS

Anticipated Formation Tops: KB 3456' (est)
GL 3440'

<u>FORMATION</u>	<u>ESTIMATED TOP FROM KB</u>	<u>ESTIMATED SUBSEA TOP</u>	<u>BEARING</u>
T/Rustler	546'	+2910'	Barren
T/Salt	896'	+2560'	Barren
B/Salt	3962'	- 506'	Barren
T/Lamar Lime	4186'	- 730'	Barren
T/Ramsey Sand	4221'	- 765'	Oil/Gas
T/Lwr Cherry Canyon	6250'	- 2794'	Oil/Gas
T/PLU 103 Show	6581'	- 3125'	Oil/Gas
T/Livingston Ridge A	6597'	- 3141'	Oil/Gas
T/JRU 13	6702'	- 3246'	Oil/Gas
T/Lwr Brushy Canyon	7741'	- 4285'	Oil/Gas
T/Bone Spring Lime	8029'	- 4575'	Oil/Gas
TD	8300'	- 4844'	

POINT 3: CASING PROGRAM

<u>TYPE</u>	<u>INTERVALS</u>	<u>PURPOSE</u>	<u>CONDITION</u>
8-5/8", 24#, J-55, ST&C	0' - 850'	Surface	New
5-1/2", 15.50# & 17#, K-55, LT&C	0' - 8300'	Production	New

POINT 4: PRESSURE CONTROL EQUIPMENT (SEE ATTACHED DIAGRAM)

A BOP equivalent to Diagram 1 will be nipped up on the surface casing head. When testing, the BOP stack, choke, kill lines, kelly cocks, inside BOP, etc. will be hydro-tested to the lowest rated working pressure of the equipment being tested. In addition to the rated working pressure test, a low pressure (200 psi) test will be required. These tests will be performed:

- a) Upon installation
- b) After any component changes
- c) Fifteen days after a previous test
- d) As required by well conditions

Con't... **POINT 6: TECHNICAL STAGES OF OPERATION**

E) **DIRECTIONAL DRILLING**

No directional services anticipated.

POINT 7: ANTICIPATED RESERVOIR CONDITIONS

Normal pressured formations are anticipated throughout this well. No H₂S is expected.

POINT 8: OTHER PERTINENT INFORMATION

A) **Auxiliary Equipment**

Upper and lower kelly cocks. Full opening stab in valve on the rig floor.

B) **Anticipated Starting Date**

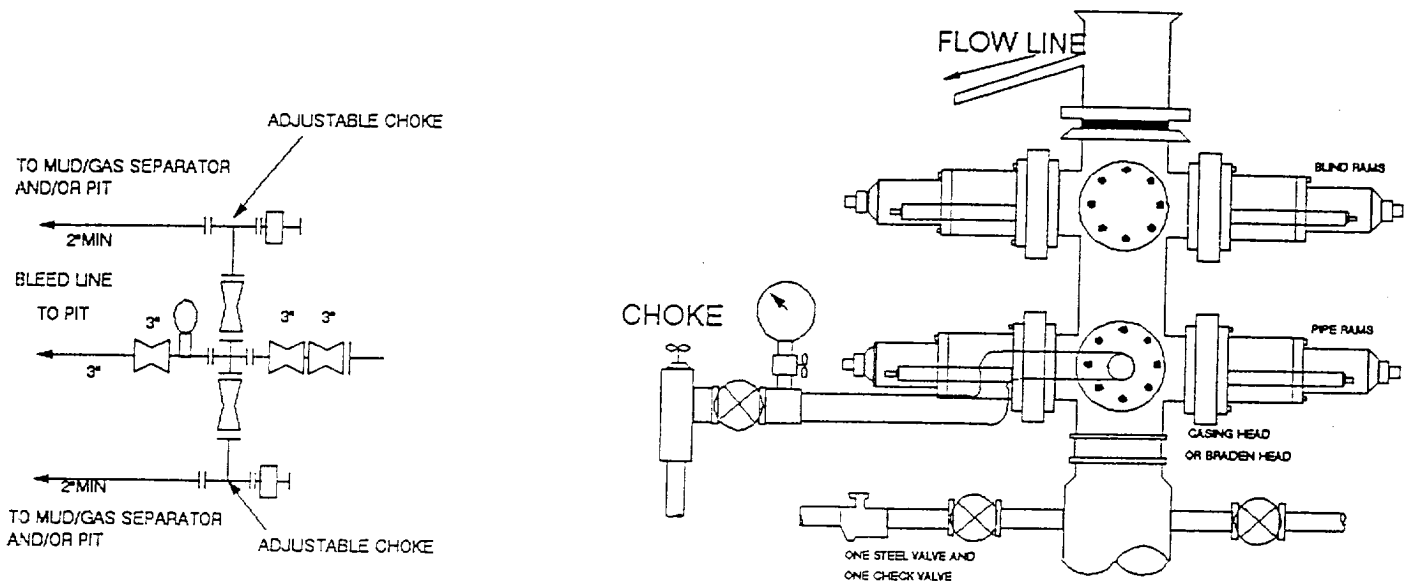
Upon approval

17 days drilling operations

14 days completion operations

FDC/mac
1/28/98

3000 PSI WP



THE FOLLOWING CONSTITUTE MINIMUM BLOWOUT PREVENTER REQUIREMENTS

- A. One double gate blowout preventer with lower rams for pipe and upper rams blind, all hydraulically controlled.
- B. Opening on preventers between rams to be flanged, studded or clamped and at least two inches in diameter.
- C. All connections from operating manifold to preventers to be all steel hose or tube a minimum of one inch in diameter.
- D. The available closing pressure shall be at least 15% in excess of that required with sufficient volume to operate (close, open, and re-close) the preventers.
- E. All connections to and from preventers to have a pressure rating equivalent to that of the BOP's.
- F. Manual controls to be installed before drilling cement plug.
- G. Valve to control flow through drill pipe to be located on rig floor.
- H. All chokes will be adjustable. Choke spool may be used between rams.