

N. M. Oil Cons. Division

Form 3160-3
(July 1992)

811 S. 1ST ST.

SUBMIT IN TRIPLICATE
(Other instructions on reverse side)

FORM APPROVED
OMB NO. 1004-0136
Expires: February 28, 1995

UNITED STATES DEPARTMENT OF THE INTERIOR BUREAU OF LAND MANAGEMENT

APPLICATION FOR PERMIT TO DRILL OR DEEPEN

1a. TYPE OF WORK

DRILL ☒

DEEPEN ☐

b. TYPE OF WELL

OIL WELL ☒

GAS WELL ☐

OTHER

SINGLE ZONE ☒

MULTIPLE ZONE ☐

2. NAME OF OPERATOR

Pogo Producing Company

17891

3. ADDRESS AND TELEPHONE NO.

P.O.Box 10340, Midland, Texas 79702

4. LOCATION OF WELL (Report location clearly and in accordance with any State requirements*)

At surface

2130' FSL & 1830' FEL of Section 1

At proposed prod. zone

Same

14. DISTANCE IN MILES AND DIRECTION FROM NEAREST TOWN OR POST OFFICE*

20 miles east of Loving, N.M.

15. DISTANCE FROM PROPOSED* LOCATION TO NEAREST PROPERTY OR LEASE LINE, FT. (Also to nearest drlg. unit line, if any)

1830'

16. NO. OF ACRES IN LEASE

640

17. NO. OF ACRES ASSIGNED TO THIS WELL

40

18. DISTANCE FROM PROPOSED LOCATION* TO NEAREST WELL, DRILLING, COMPLETED, OR APPLIED FOR, ON THIS LEASE, FT.

1320'

19. PROPOSED DEPTH

8,750'

20. ROTARY OR CABLE TOOLS

Rotary

21. ELEVATIONS (Show whether DF, RT, GR, etc.)

3524' Ground Level

22. APPROX. DATE WORK WILL START*

Upon Approval

23. PROPOSED CASING AND CEMENTING PROGRAM

SIZE OF HOLE	GRADE SIZE OF CASING	WEIGHT PER FOOT	SETTING DEPTH	QUANTITY OF CEMENT
17-1/2"	13-3/8"	54.50# J-55	550'	500 sx (circ)
11"	8-5/8"	24,32# J-55	4100'	1200 sx (circ)
7-7/8"	5-1/2"	5.50#, 17# J-55, N-80	8750'	1200 sx (1900')

The operator proposes to drill to a depth sufficient to test the Delaware and the Bone Springs formation for oil & gas. Specific programs are outlined in the following attachments:

DRILLING PROGRAM

SURFACE USE AND OPERATING PLAN

EXHIBIT A - ROAD MAP

EXHIBIT B - EXISTING WELL MAP

EXHIBIT C - LOCATION AND ACREAGE DEDICATION PLAT

EXHIBIT C-1 TOPO MAP

EXHIBIT D - DRILLING AND RIG LAYOUT

EXHIBIT E - 3M BOP EQUIPMENT

APPROVAL SUBJECT TO
GENERAL REQUIREMENTS AND
SPECIAL STIPULATIONS
ATTACHED

RECEIVED

MAR 11 97

BLM
ROSWELL, NM

IN ABOVE SPACE DESCRIBE PROPOSED PROGRAM: If proposal is to deepen, give data on present productive zone and proposed new productive zone. If proposal is to drill or deepen directionally, give pertinent data on subsurface locations and measured and true vertical depths. Give blowout preventer program, if any.

24.

SIGNED

John M. C. Rutledge

TITLE

Agent

DATE

03/08/97

(This space for Federal or State office use)

PERMIT NO.

APPROVAL DATE

Application approval does not warrant or certify that the applicant holds legal or equitable title to those rights in the subject lease which would entitle the applicant to conduct operations thereon.
CONDITIONS OF APPROVAL, IF ANY:

APPROVED BY

/s/ M J Chavez

TITLE

STATE Director

DATE

1-23-98

*See Instructions On Reverse Side

Title 18 U.S.C. Section 1001, makes it a crime for any person knowingly and willfully to make to any department or agency of the United States any false statement.

DISTRICT I
P.O. Box 1980, Hobbs, NM 88241-1980

DISTRICT II
P.O. Drawer DD, Artesia, NM 88211-0719

DISTRICT III
1000 Rio Brazos Rd., Aztec, NM 87410

DISTRICT IV
P.O. BOX 2088, SANTA FE, N.M. 87504-2088

State of New Mexico
Energy, Minerals and Natural Resources Department

Form C-102
Revised February 10, 1994
Submit to Appropriate District Office
State Lease - 4 Copies
Fee Lease - 3 Copies

OIL CONSERVATION DIVISION

P.O. Box 2088
Santa Fe, New Mexico 87504-2088

☐ AMENDED REPORT

WELL LOCATION AND ACREAGE DEDICATION PLAT

API Number		Pool Code	Pool Name
			Undesignated (Bone Springs)
Property Code	Property Name		Well Number
	SUNDANCE 1 FEDERAL		7
OGRID No.	Operator Name		Elevation
017891	POGO PRODUCING COMPANY		3524

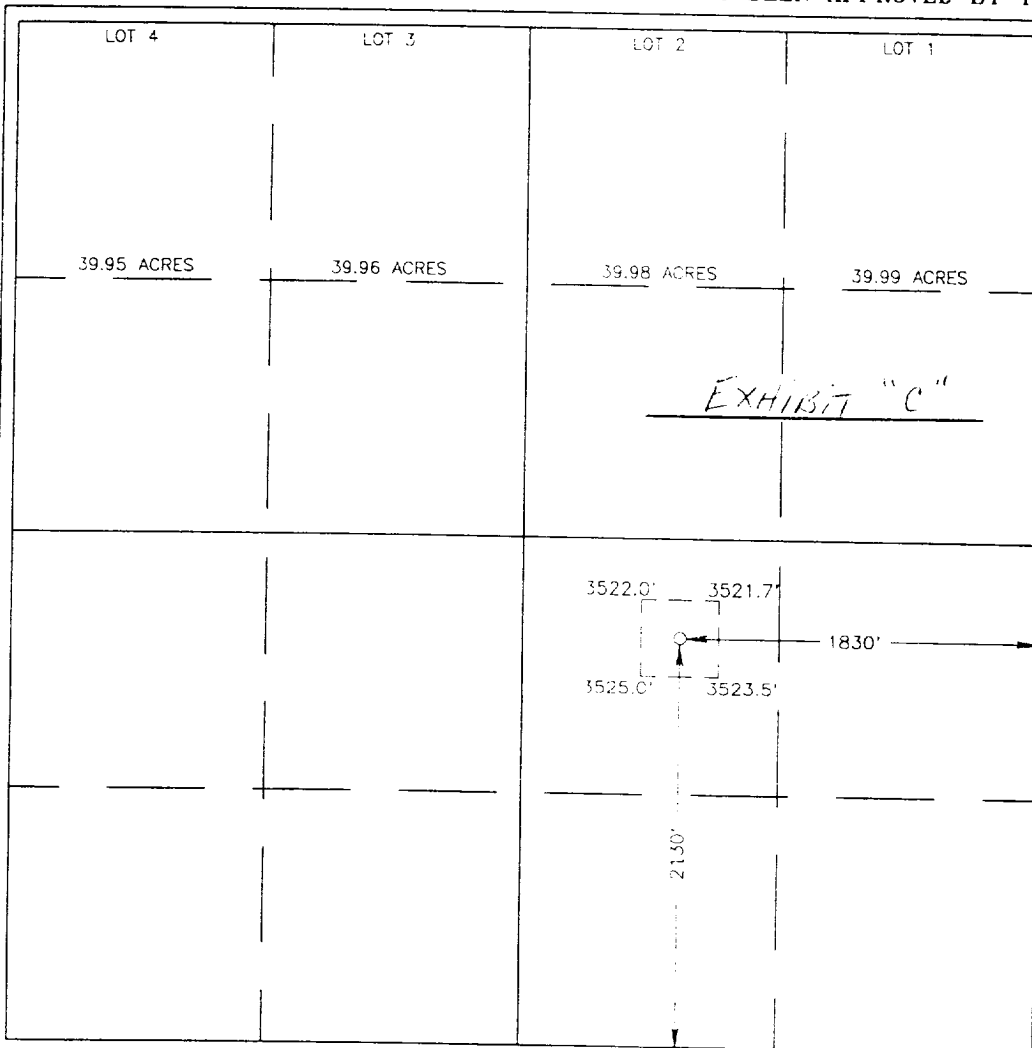
Surface Location

UL or lot No.	Section	Township	Range	Lot Idn	Feet from the	North/South line	Feet from the	East/West line	County
J	1	24 S	31 E		2130	SOUTH	1830	EAST	EDDY

Bottom Hole Location If Different From Surface

UL or lot No.	Section	Township	Range	Lot Idn	Feet from the	North/South line	Feet from the	East/West line	County
Dedicated Acres		Joint or Infill	Consolidation Code	Order No.					

NO ALLOWABLE WILL BE ASSIGNED TO THIS COMPLETION UNTIL ALL INTERESTS HAVE BEEN CONSOLIDATED
OR A NON-STANDARD UNIT HAS BEEN APPROVED BY THE DIVISION



OPERATOR CERTIFICATION

I hereby certify the the information
contained herein is true and complete to the
best of my knowledge and belief.

James M.C. Ritchie, Jr.
Signature
James M.C. Ritchie, Jr.
Printed Name
Agent
Title
03/08/97
Date

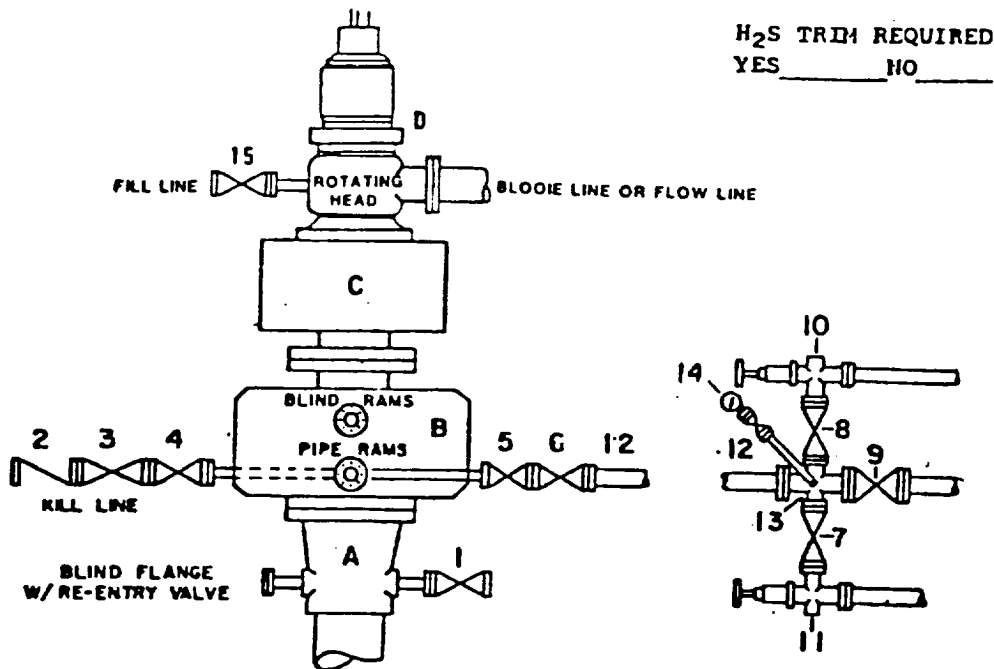
SURVEYOR CERTIFICATION

I hereby certify that the well location shown
on this plat was plotted from field notes of
actual surveys made by me or under my
supervision, and that the same is true and
correct to the best of my belief.

FEB. 28, 1997

Date Surveyed J. EIDSON DMCC
Signature & Seal of
Professional Surveyor
Ronald J. Eidson
3-03-97
197-11-0297
Certificate No. JOHN W. WEST 676
RONALD J. EIDSON 3239
PROFESSARY EIDSON 12641

DRILLING CONTROL **CONDITION III-B 3000 PSI WP**



DRILLING CONTROL

MATERIAL LIST - CONDITION III - B

- | | |
|----------------|---|
| A | Wellhead |
| B | 3000# W.P. Dual ram type preventer, hydraulic operated with 1" steel, 3000# W.P. control lines (where sub-structure height is adequate, 2 - 3000# W.P. single ram preventers may be utilized with 3000# W.P. drilling spool with 2" minimum flanged outlet for kill line and 3" minimum flanged outlet for choke line. The drilling spool is to be installed below the single ram type preventers). |
| C | 3000# W.P. Annular Preventer with 1" steel, 3000# W.P. control lines. |
| D | Rotating Head with fill up outlet and extended Blooie line. |
| 1,3,4,
7,8, | 2" minimum 3000# W.P. flanged full opening steel gate valve, or Halliburton Lo Torc Plug valve. |
| 2 | 2" minimum 3000# W.P. back pressure valve. |
| 5,6,9 | 3" minimum 3000# W.P. flanged full opening steel gate valve, or Halliburton Lo Torc Plug valve. |
| 12 | 3" minimum Schedule 80, Grade B, seamless line pipe. |
| 13 | 2" minimum x 3" minimum 3000# W.P. flanged cross. |
| 10,11 | 2" minimum 3000# W.P. adjustable choke bodies. |
| 14 | Cameron Mud Gauge or equivalent (location optional in Choke line). |
| 15 | 2" minimum 3000# W.P. flanged or threaded full opening steel gate valve, or Halliburton Lo Torc Plug valve. |

SCALE	DATE	EST. NO	ORG. NO
DRAWN BY			
CHECKED BY			
APPROVED BY			

EXHIBIT E