

District I  
PO Box 1980, Hobbs, NM 88241-1980  
District II  
PO Drawer DD, Artesia, NM 88211-0719  
District III  
1000 Rio Brazos Rd., Aztec, NM 87410  
District IV  
PO Box 2088, Santa Fe, NM 87504-2088

State of New Mexico  
Energy, Minerals & Natural Resources Department

OIL CONSERVATION DIVISION  
PO Box 2088  
Santa Fe, NM 87504-2088

Form C-101  
Revised February 10, 1994  
Instructions on back  
Submit to Appropriate District Office  
State Lease - 6 Copies  
Fee Lease - 5 Copies

☐ AMENDED REPORT

APPLICATION FOR PERMIT TO DRILL, RE-ENTER, DEEPEN, PLUGBACK, OR ADD A ZONE

Operator Name and Address. Sonat Exploration Co. - Midland 110 W. Louisiana, Suite 500 Midland, Tx 79701		OGRID Number 109487
		API Number 30-015-31023
Property Code 17914	Property Name Todd "2" State	Well No. 7

Surface Location

UL or lot no.	Section	Township	Range	Lot Idn	Feet from the	North/South line	Feet from the	East/West line	County
M	2	24S	31E		660	south	660	west	Eddy

Proposed Bottom Hole Location If Different From Surface

UL or lot no.	Section	Township	Range	Lot Idn	Feet from the	North/South line	Feet from the	East/West line	County
Proposed Pool 1 Ingle Wells; Delaware 33745					Proposed Pool 2				

Work Type Code N	Well Type Code O	Cable/Rotary R	Lease Type Code S	Ground Level Elevation 3489
Multiple N	Proposed Depth 8,700'	Formation Delaware	Contractor n/a	Spud Date 1st Qtr 1998

Proposed Casing and Cement Program

Hole Size	Casing Size	Casing weight/foot	Setting Depth	Sacks of Cement	Estimated TOC
14-3/4"	11-3/4"	42# WC-40	670'	Suff to circ	surface
11"	8-5/8"	24# J55	4,300'	Suff to circ	surface
7-7/8"	5-1/2"	17# J55	8,700	2100 sx	500'

Describe the proposed program. If this application is to DEEPEN or PLUG BACK give the data on the present productive zone and proposed new productive zone. Describe the blowout prevention program, if any. Use additional sheets if necessary.

This proposed well is a Delaware test.

B. O. P. sketch is attached.

FEB 1998  
RECEIVED  
OCD - ARTESIA

I hereby certify that the information given above is true and complete to the best of my knowledge and belief. Signature: <i>Laura Clepper</i>		OIL CONSERVATION DIVISION	
Printed name: Laura Clepper		Approved by: <i>[Signature]</i>	
Title: Engineering Technician		Title: DISTRICT II SUPERVISOR	
Date: 2/6/98		Approval Date: FEB 18 1998 Expiration Date: 2-18-99	
Phone: 915/684-0400		Conditions of Approval: Attached <input type="checkbox"/>	

DISTRICT III  
1000 Rio Brazos Rd., Aztec, NM 87410

## OIL CONSERVATION DIVISION

P.O. Box 2088  
Santa Fe, New Mexico 87504-2088

DISTRICT IV  
P.O. Box 2088, Santa Fe, NM 87504-2088

☐ AMENDED REPORT

## WELL LOCATION AND ACREAGE DEDICATION PLAT

API Number	Pool Code 33745	Pool Name Ingle Wells; Delaware
Property Code 17914	Property Name TODD "2" STATE	Well Number 7
OGRID No. 109487	Operator Name SONAT EXPLORATION COMPANY	Elevation 3489

## Surface Location

UL or lot No.	Section	Township	Range	Lot Idn	Feet from the	North/South line	Feet from the	East/West line	County
M	2	24 S	31 E		660	SOUTH	660	WEST	EDDY

## Bottom Hole Location If Different From Surface

UL or lot No.	Section	Township	Range	Lot Idn	Feet from the	North/South line	Feet from the	East/West line	County

Dedicated Acres 40	Joint or Infill	Consolidation Code	Order No.
-----------------------	-----------------	--------------------	-----------

NO ALLOWABLE WILL BE ASSIGNED TO THIS COMPLETION UNTIL ALL INTERESTS HAVE BEEN CONSOLIDATED  
OR A NON-STANDARD UNIT HAS BEEN APPROVED BY THE DIVISION

LOT 4 39.99 AC.	LOT 3 39.98 AC.	LOT 2 39.96 AC.	LOT 1 39.95 AC.

**OPERATOR CERTIFICATION**

I hereby certify the the information contained herein is true and complete to the best of my knowledge and belief.

*Laura Clepper*  
Signature

Laura Clepper  
Printed Name

Engineering Technician  
Title

2/6/98  
Date

**SURVEYOR CERTIFICATION**

I hereby certify that the well location shown on this plat was plotted from field notes of actual surveys made by me or under my supervision, and that the same is true and correct to the best of my belief.

JANUARY 30, 1998

Date Surveyed

Signature & Seal of Professional Surveyor

*Ronald J. Gibson*  
RONALD J. GIBSON  
WFO, Num. 98-11-847

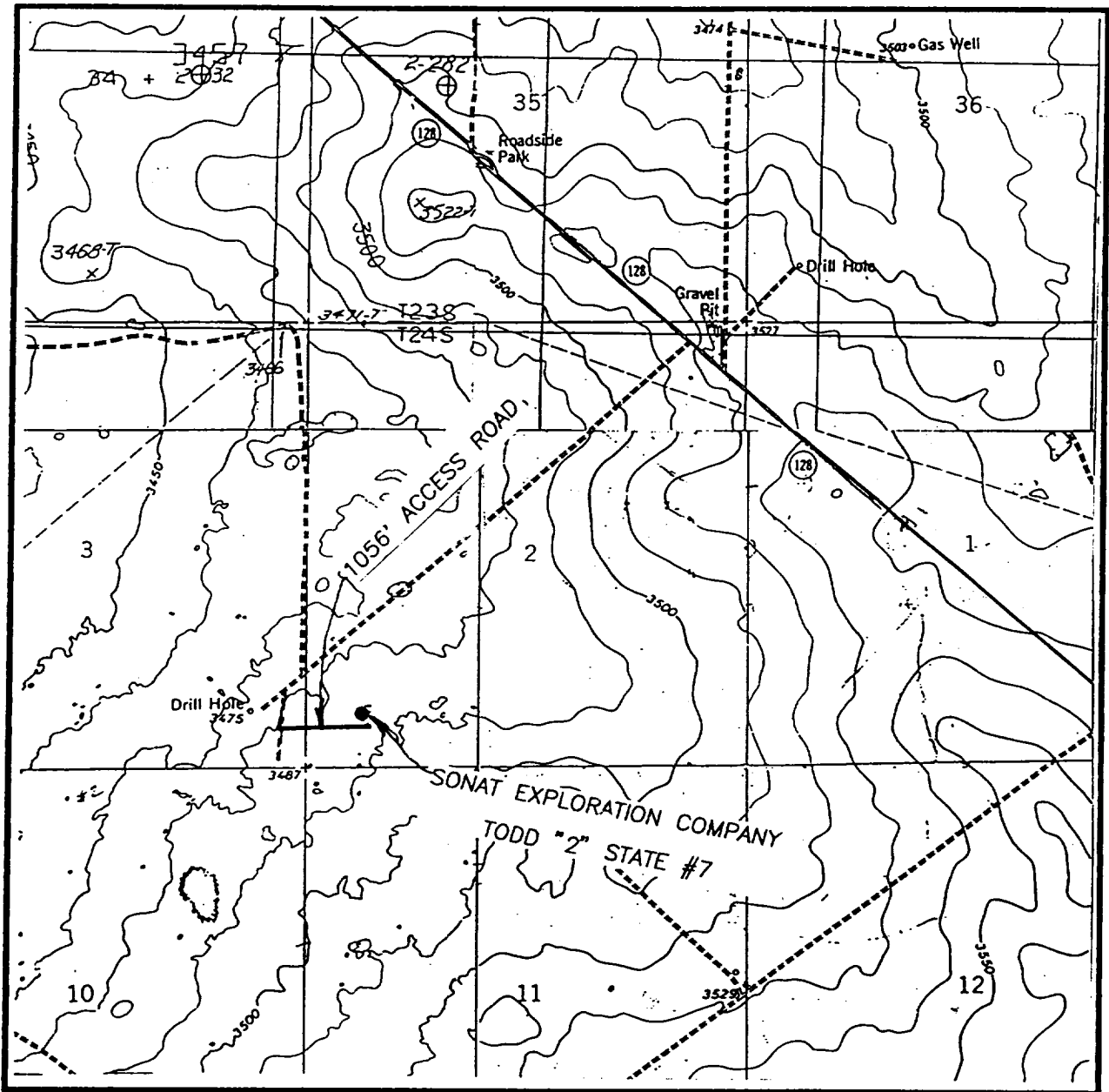
Certificate No. RONALD J. GIBSON, 3239  
GARY G. GIBSON, 12841  
MACON McDONALD, 12185

Map showing the Sonat Exploration Company's Todd "2" State #7. The map includes a grid system with labels T.24 S. and T.25 S. on the right side. Key features include:

- Centinela Mound**: A prominent feature in the upper left quadrant.
- Remuda Basin**: Located in the upper left, near the Centinela Mound.
- Canyon**: A feature in the lower left quadrant.
- Shale**: A geological feature in the lower right quadrant.
- 15-121**: A dashed line running diagonally across the upper right quadrant.
- 15-126**: A solid line running diagonally across the lower right quadrant.
- Numbered points**: Points 1 through 13 are marked on the map, with point 13 being a large black dot.
- Other labels**: "NASH 3284" in the top left, "TOWN" and "DOW" in the middle left, and "15-126" in the bottom left.

(505) 393-3117

# LOCATION VERIFICATION MAP



SCALE: 1" = 2000'

CONTOUR INTERVAL - 10'

SEC. 2 TWP. 24-S RGE. 31-E

SURVEY N.M.P.M.

COUNTY EDDY

DESCRIPTION 660' FSL & 660' FWL

ELEVATION 3489'

OPERATOR SONAT EXPLORATION COMPANY

LEASE TODD #2 STATE

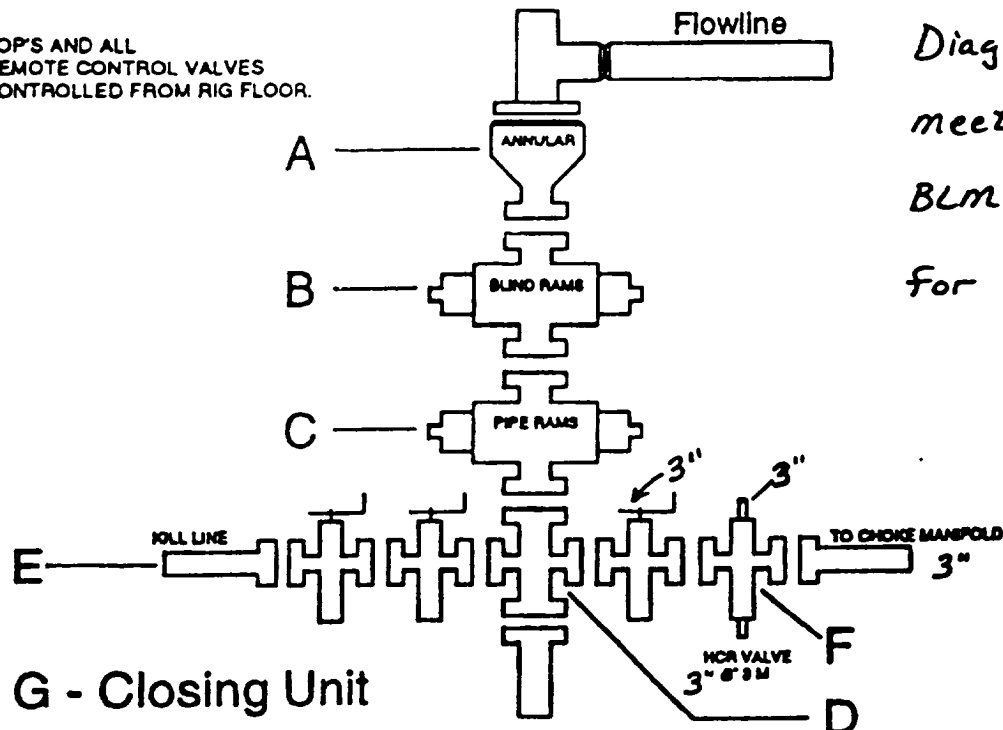
U.S.G.S. TOPOGRAPHIC MAP

PADUCA BREAKS NW, HAT MESA, NASH DRAW, BIG SINKS, N.M.

**JOHN WEST ENGINEERING**  
**HOBBS, NEW MEXICO**  
**(505) 393-3117**

**SONAT EXPLORATION****West ~~SONAT~~ TEXAS BUSINESS UNIT****Minimum Requirements for a 3,000 psi BOP  
Stack Manifold & Closing System**

BOP'S AND ALL  
REMOTE CONTROL VALVES  
CONTROLLED FROM RIG FLOOR.



*Diagram as shown  
meets the minimum  
BLM requirements  
for a 3M stack.*

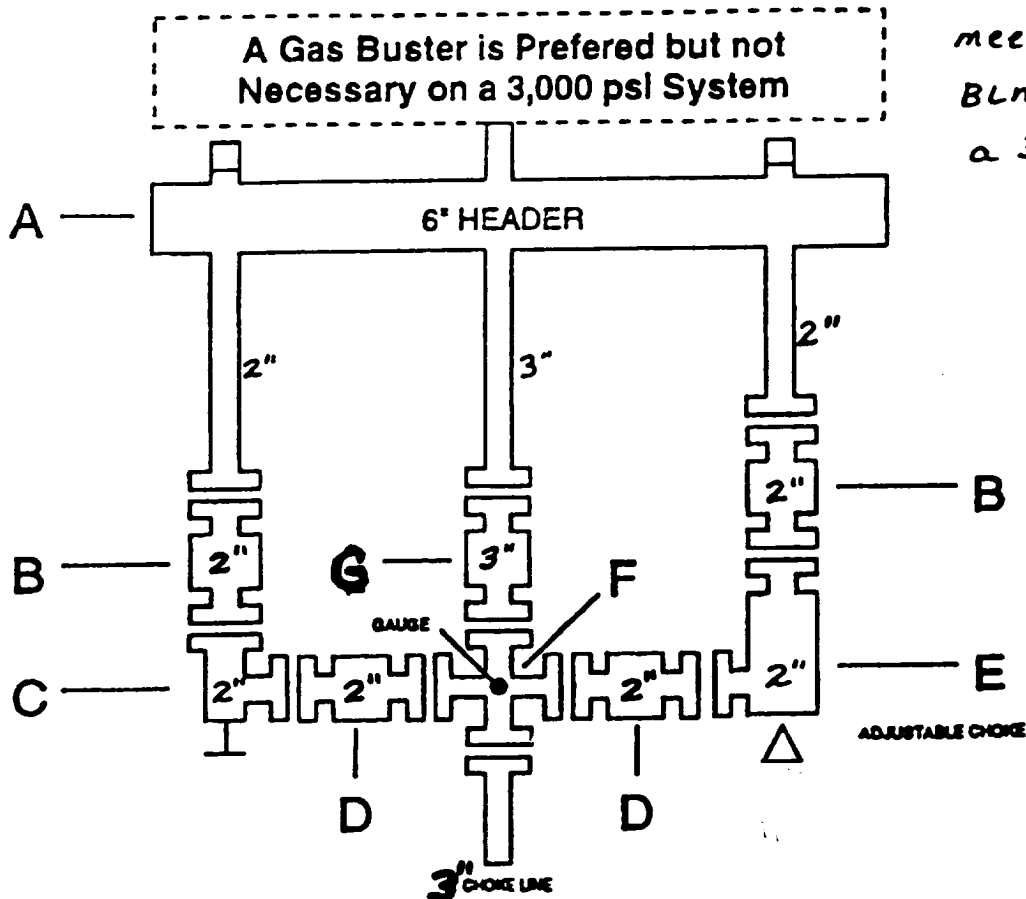
- G - Closing Unit**
- A. Annular BOP Must be 3000 psi Working Pressure.
  - B. Blind Rams Between Annular & Pipe Rams w/ 3000 psi Working Pressure.
  - C. Pipe Rams Below Blind Rams w/ 3000 psi Working Pressure.
  - Note: All Rams & Spools Must Meet Required I.D. for Hole Size.
  - D. Drilling Spool w/ 2 Outlets for Choke Line & Kill Line
  - E. Kill Line 2" 3 M w/ 2 Manual Valves Bolted & Flanged Below Bottom Pipe Rams. Either a Drilling Spool or the Outlet on the BOP Stack can be Used to Accommodate Kill Line and Choke Line.
  - F. Choke Line w/ 3" 3 M Valves. Inside Valve can be Manual but the Outside Valve Must be Hydraulic (HCR). Choke Line Must be 3" 3 M.
  - G. Closing Unit (Kookey) w/ a Primary & Secondary Pressure Supply to Operate the BOP Stack. Also a N<sub>2</sub> Supply will be Provided as a Final Source of Operation to Close the BOP Stack. This Unit is Required to Contain a minimum of 1 1/2 Times the Needed Volume to Operate the BOP Stack at All Times. The Precharge of N<sub>2</sub> will be Checked Prior to Commencing Work for SONAT.

**SONAT EXPLORATION****West ██████████ TEXAS BUSINESS UNIT**

Minimum Requirements for a  
3,000 psi BOP Stack Manifold

A Gas Buster is Preferred but not  
Necessary on a 3,000 psi System

Diagram as shown  
meets the minimum  
BLM requirements +  
a 3m stack.



- A. Header for Gas Expansion 6" O.D. Tube.
- B. 2" 3 M Manual Valves on Down Stream Side of Choke.
- C. 2" 3 M Manual Adjustable or Positive Choke.
- D. 2" 3 M Manual Valve
- E. 2" 3 M Adjustable w/ Remote Station
- F. 3" 3 M Tee w/ Gauge in Top-Side 3" Choke Line

Note: All Pipe Will be Flanged & Welded. No Screwed Connections.

G. 3" 3m Manual Valve