

District I
PO Box 1980, Hobbs, NM 88241-1980
District II
811 S. 1st Street, Artesia, NM 88210-2834
District III
1000 Rio Brazos Rd., Aztec, NM 87410
District IV
2040 South Pacheco, Santa Fe, NM 87505

State of New Mexico
Energy, Minerals & Natural Resources Department

OIL CONSERVATION DIVISION
2040 South Pacheco
Santa Fe, NM 87505

Form C-102
Revised October 18, 1994
Instructions on back
Submit to Appropriate District Office
State Lease - 4 Copies
Fee Lease - 3 Copies

☐ AMENDED REPORT

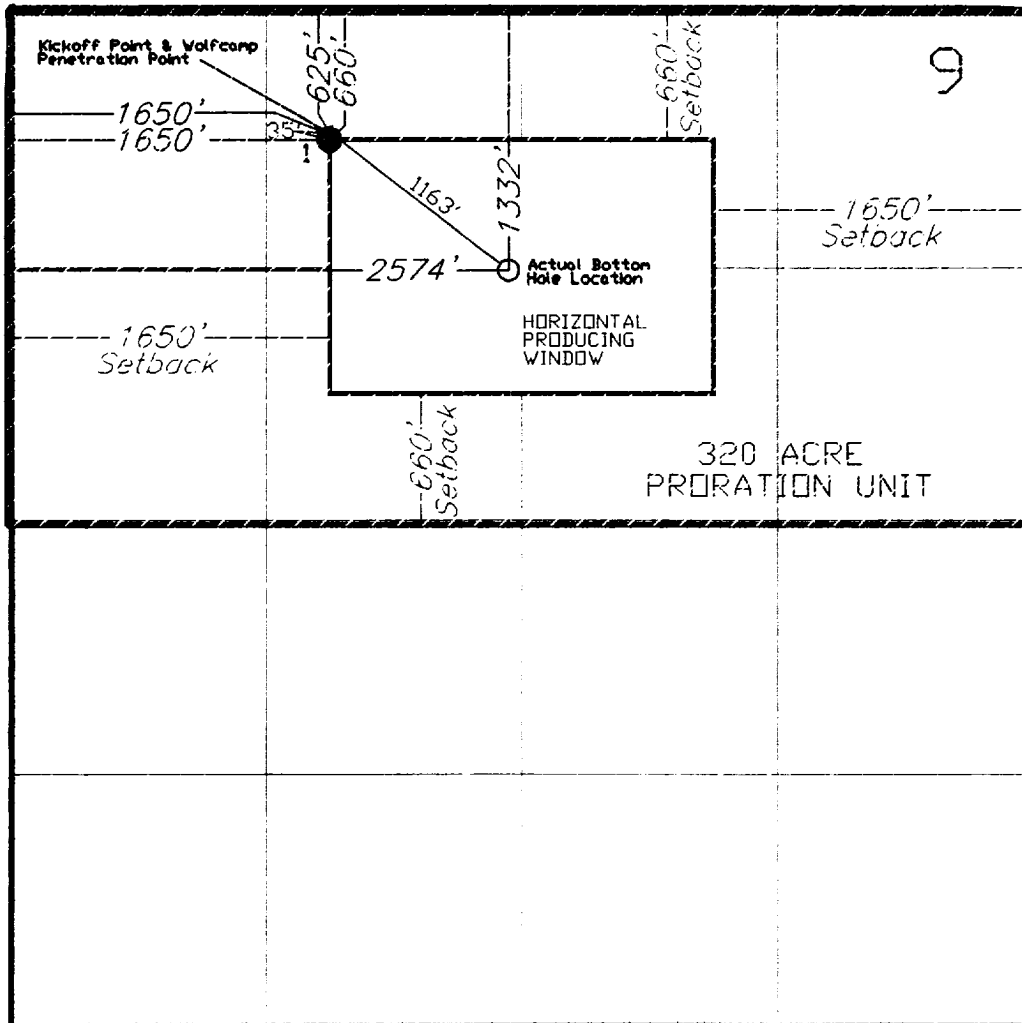
WELL LOCATION AND ACREAGE DEDICATION PLAT

¹ API Number 30-015-30201	² Pool Code 84330	³ Pool Name CORRAL DRAW WOLFCAMP GAS
⁴ Property Code 23149	⁵ Property Name CORRAL DRAW 9 FEDERAL	⁶ Well Number 1
⁷ OGRID No. 26485	⁸ Operator Name BURLINGTON RESOURCES OIL & GAS COMPANY	⁹ Elevation 2941' GR

¹⁰ Surface Location									
UL or lot no. C	Section 9	Township 25S	Range 29E	Lot. Idn	Feet from the 660	North/South Line NORTH	Feet from the 1650	East/West line WEST	County EDDY

¹¹ Bottom Hole Location If Different From Surface									
UL or lot no. F	Section 9	Township 25S	Range 29E	Lot. Idn	Feet from the 1332	North/South Line NORTH	Feet from the 2574	East/West line WEST	County EDDY
¹² Dedicated Acres 320	¹³ Joint or Infill	¹⁴ Consolidation Code	¹⁵ Order No. NSL-3985(BHL) FOR VERTICAL PORTION OF HOLE						

NO ALLOWABLE WILL BE ASSIGNED TO THIS COMPLETION UNTIL ALL INTERESTS HAVE BEEN CONSOLIDATED
OR A NON--STANDARD UNIT HAS BEEN APPROVED BY THE DIVISION



¹⁷ OPERATOR CERTIFICATION I hereby certify that the information contained herein is true and complete to the best of my knowledge and belief. <i>Maria L. Perez</i> Signature MARIA L. PEREZ Printed Name REGULATORY REPRESENTATIVE Title 9-29-98 Date
¹⁸ SURVEYOR CERTIFICATION I hereby certify that the well location shown on this plat was plotted from field notes of actual surveys made by me or under my supervision, and that the same is true and correct to the best of my belief. Date of Survey Signature and Seal of Professional Surveyer: Certificate Number