

DISTRICT I
P.O. Box 1950, Hobbs, NM 88241-1950

DISTRICT II
P.O. Drawer DD, Artesia, NM 88211-0719

DISTRICT III
1000 Rio Brazos Rd., Aztec, NM 87410

DISTRICT IV
P.O. BOX 2088, SANTA FE, N.M. 87504-2088

State of New Mexico

Energy, Minerals and Natural Resources Department

JUN 1 1998

Form C-102
Revised February 10, 1994
Submit to Appropriate District Office
State Lease - 4 Copies
Fee Lease - 3 Copies

OIL CONSERVATION DIVISION

P.O. Box 2088
Santa Fe, New Mexico 87504-2088

☐ AMENDED REPORT

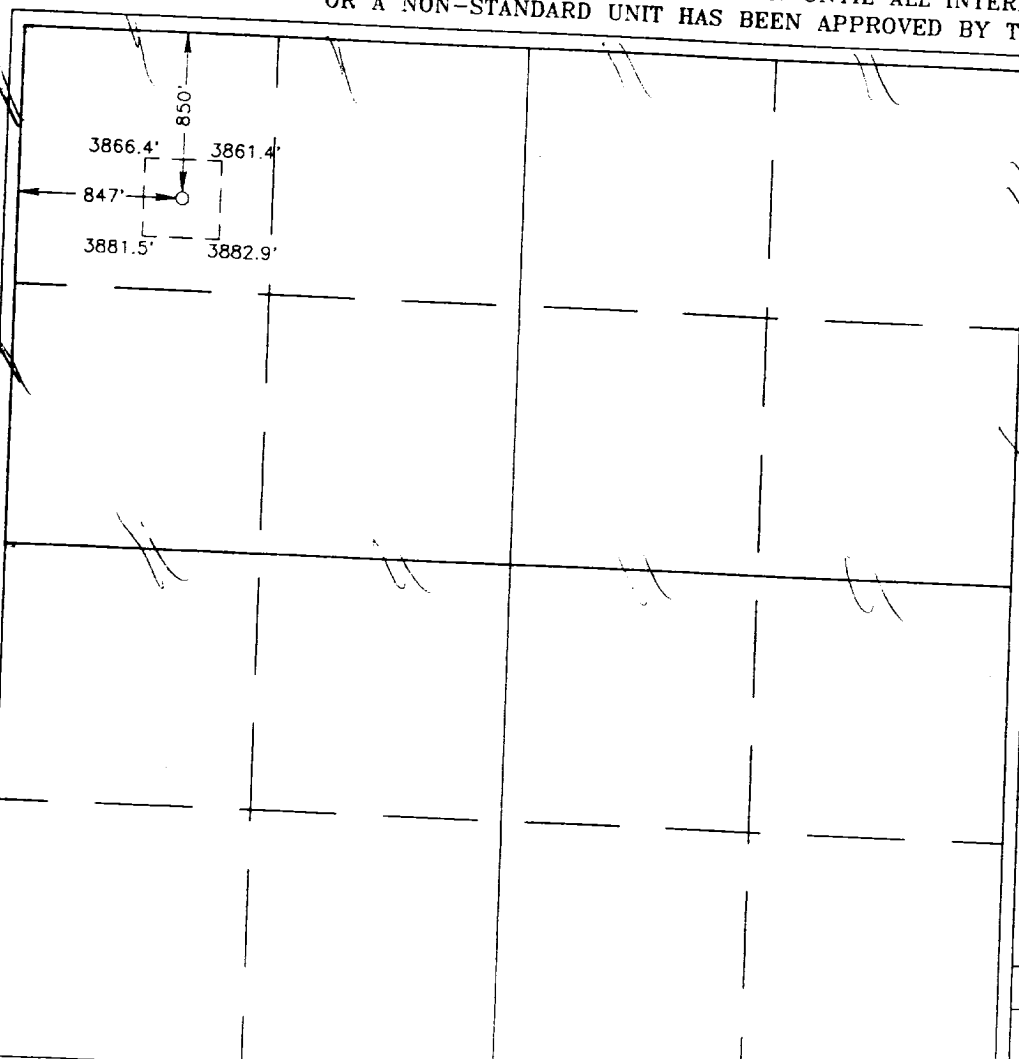
WELL LOCATION AND ACREAGE DEDICATION PLAT

| | | |
|---------------|---------------------------|-------------|
| API Number | Pool Code | Pool Name |
| Property Code | Property Name | WILDCAT |
| OGRID No. | PRIMERO FEDERAL | Well Number |
| 14049 | Operator Name | 1 |
| | MARBOB ENERGY CORPORATION | Elevation |
| | | 3873 |

| Surface Location | | | | | | | | | |
|------------------|---------|----------|-------|---------|---------------|------------------|---------------|----------------|--------|
| UL or lot No. | Section | Township | Range | Lot Idn | Feet from the | North/South line | Feet from the | East/West line | County |
| D | 23 | 26 S | 24 E | | 850 | NORTH | 847 | WEST | EDDY |

| Bottom Hole Location If Different From Surface | | | | | | | | | |
|--|-----------------|--------------------|-----------|---------|---------------|------------------|---------------|----------------|--------|
| UL or lot No. | Section | Township | Range | Lot Idn | Feet from the | North/South line | Feet from the | East/West line | County |
| | | | | | | | | | |
| Dedicated Acres | Joint or Infill | Consolidation Code | Order No. | | | | | | |
| 320 | | | | | | | | | |

NO ALLOWABLE WILL BE ASSIGNED TO THIS COMPLETION UNTIL ALL INTERESTS HAVE BEEN CONSOLIDATED
OR A NON-STANDARD UNIT HAS BEEN APPROVED BY THE DIVISION



OPERATOR CERTIFICATION

I hereby certify the the information
contained herein is true and complete to the
best of my knowledge and belief.

Rhonda Nelson
Signature

RHONDA NELSON
Printed Name

PRODUCTION ANALYST
Title

10/5/98
Date

SURVEYOR CERTIFICATION

I hereby certify that the well location shown
on this plat was plotted from field notes of
actual surveys made by me or under my
supervision, and that the same is true and
correct to the best of my belief.

MAY 22, 1998

Date Surveyed

DMCC

Signature & Seal of
Professional Surveyor

Ronald J. Stinson
RONALD J. STINSON
198-11-08345
5-28-98

Certificate No. RONALD J. STINSON 3239
GARY P. STINSON