

District I
PO Box 1960, Hobbs, NM 88241-1960
District II
PO Drawer DD, Artesia, NM 88211-0719
District III
1000 Rio Brazos Rd., Aztec, NM 87410
District IV
PO Box 2088, Santa Fe, NM 87504-2088

State of New Mexico
Energy, Minerals & Natural Resources Department

OIL CONSERVATION DIVISION
PO Box 2088
Santa Fe, NM 87504-2088

Form C-102
Revised February 21, 1994
Instructions on back
Submit to Appropriate District Office
State Lease - 4 Copies
Fee Lease - 3 Copies
☐ AMENDED REPORT

WELL LOCATION AND ACREAGE DEDICATION PLAT

'API Number	'Pool Code 84330	'Pool Name Ross Draw (Wolfcamp)
'Property Code	'Property Name ROSS DRAW UNIT NO. 21	'Well Number 21
'OGRID No. 7377	'Operator Name ENRON OIL & GAS COMPANY	'Elevation 3043'

¹⁰Surface Location

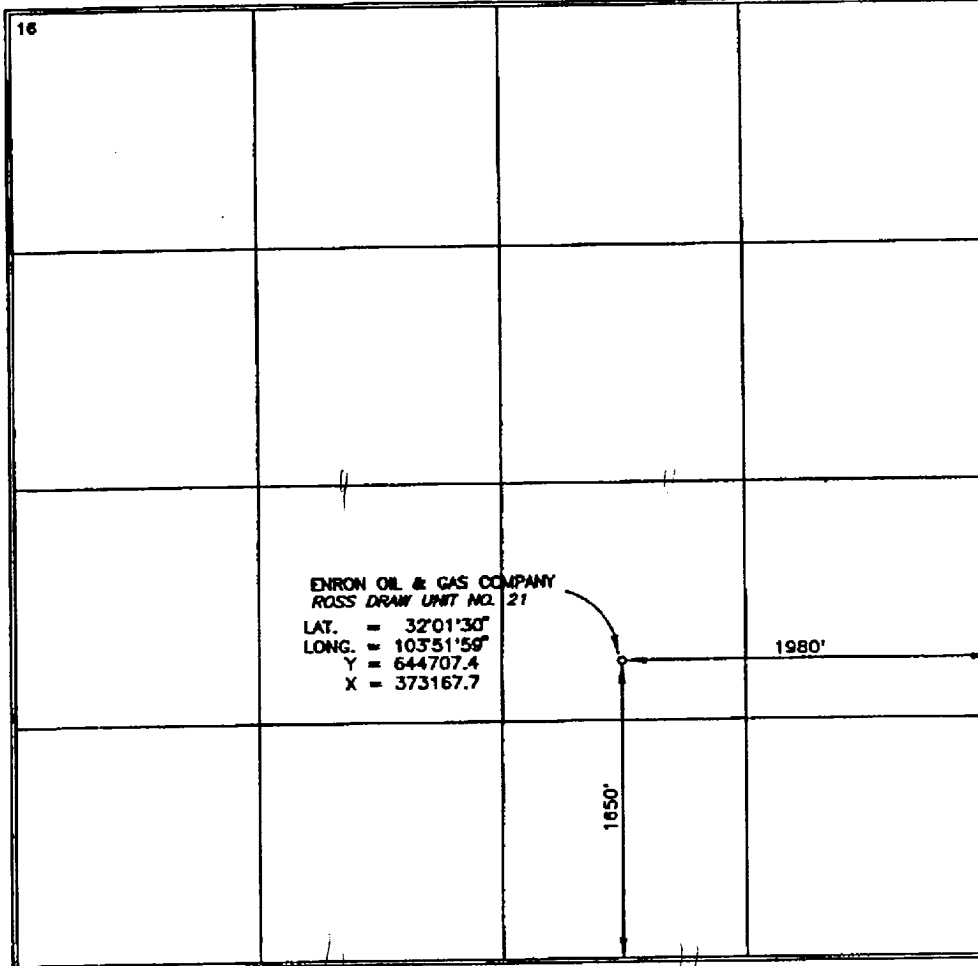
UL or lot no.	Section	Township	Range	Lot Idn	Feet from the	North/South line	Feet from the	East/West line	County
J	22	26-S	30-E		1650	SOUTH	1980	EAST	EDDY

¹¹Bottom Hole Location If Different From Surface

UL or lot no.	Section	Township	Range	Lot Idn	Feet from the	North/South line	Feet from the	East/West line	County

'Dedicated Acres 320	'Joint or Infill	'Consolidation Code	'Order No.
-------------------------	------------------	---------------------	------------

NO ALLOWABLE WILL BE ASSIGNED TO THIS COMPLETION UNTIL ALL INTERESTS HAVE BEEN CONSOLIDATED
OR A NON-STANDARD UNIT HAS BEEN APPROVED BY THE DIVISION



¹⁷ OPERATOR CERTIFICATION

I hereby certify that the information contained herein is true and complete to the best of my knowledge and belief.

Mike Francis
Signature
Mike Francis
Printed Name
Agent
Title
2-3-99
Date

¹⁸ SURVEYOR CERTIFICATION

I hereby certify that the well location shown on this plat was plotted from field notes of actual surveys made by me or under my supervision, and that the same is true and correct to best of my belief.

FEBRUARY 1999
Date of Survey
Signature and Seal of Commission Surveyor
8278
Certificate Number
8278