

DISTRICT I
P.O. Box 1980, Hobbs, NM 88241-1980

State of New Mexico

Energy, Minerals and Natural Resources Department

Form C-100
Revised February 10, 1994
Submit to Appropriate District Office
State Lease - 4 Copies
Fee Lease - 3 Copies

DISTRICT II
P.O. Drawer DD, Artesia, NM 88211-0719

DISTRICT III
1000 Rio Brazos Rd., Aztec, NM 87410

DISTRICT IV
P.O. BOX 2088, SANTA FE, N.M. 87504-2088

OIL CONSERVATION DIVISION

P.O. Box 2088

Santa Fe, New Mexico 87504-2088

☐ AMENDED REPORT

WELL LOCATION AND ACREAGE DEDICATION PLAT

| | | |
|--------------------|--|----------------------|
| API Number | Pool Code | Pool Name WILDCAT |
| Property Code | Property Name PRIMERO WHITE 14 FEDERAL | Well Number 1 |
| OGRID No. 14049 | Operator Name MARBOB ENERGY CORPORATION | Elevation 3872 |

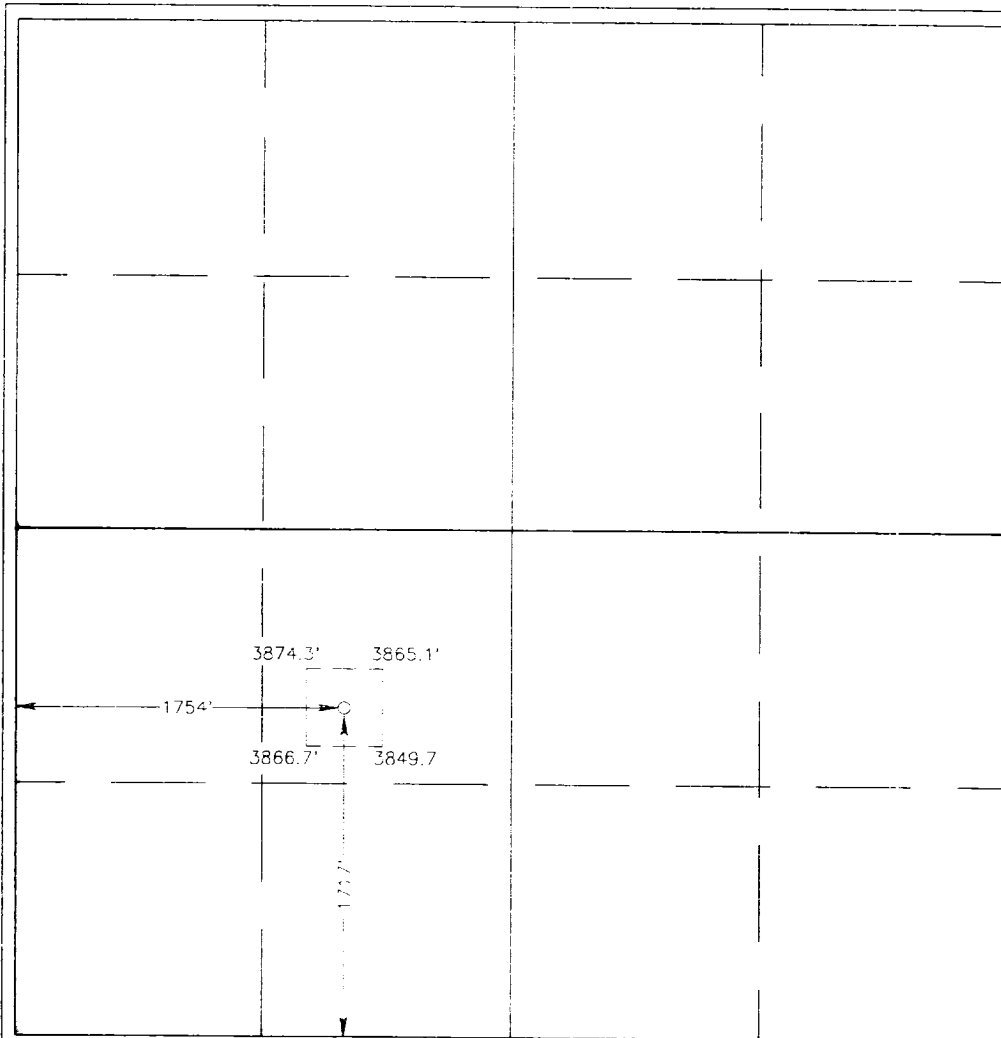
Surface Location

| | | | | | | | | | |
|--------------------|---------------|------------------|---------------|---------|-----------------------|---------------------------|-----------------------|------------------------|--------|
| UL or lot No. K | Section 14 | Township 26 S | Range 24 E | Lot Idn | Feet from the 1717 | North/South line SOUTH | Feet from the 1754 | East/West line WEST | County |
|--------------------|---------------|------------------|---------------|---------|-----------------------|---------------------------|-----------------------|------------------------|--------|

Bottom Hole Location If Different From Surface

| | | | | | | | | | |
|------------------------|-----------------|--------------------|-----------|---------|---------------|------------------|---------------|----------------|--------|
| UL or lot No. | Section | Township | Range | Lot Idn | Feet from the | North/South line | Feet from the | East/West line | County |
| Dedicated Acres 320 | Joint or Infill | Consolidation Code | Order No. | | | | | | |

NO ALLOWABLE WILL BE ASSIGNED TO THIS COMPLETION UNTIL ALL INTERESTS HAVE BEEN CONSOLIDATED
OR A NON-STANDARD UNIT HAS BEEN APPROVED BY THE DIVISION



OPERATOR CERTIFICATION

I hereby certify the the information
contained herein is true and complete to the
best of my knowledge and belief.

Robin Cockrum
Signature

ROBIN COCKRUM

Printed Name
PRODUCTION ANALYST

Title
2/9/99

Date

SURVEYOR CERTIFICATION

I hereby certify that the well location shown
on this plat was plotted from field notes of
actual surveys made by me or under my
supervision, and that the same is true and
correct to the best of my belief.

FEBRUARY 3, 1999

Date Surveyed
Signature & Seal of
Professional Surveyor

Ronald J. Eidson 02-08-97
48-11-0026

Certificate No. RONALD J. EIDSON 3236
GARY EIDSON 1284
MACON McDONALD 1278