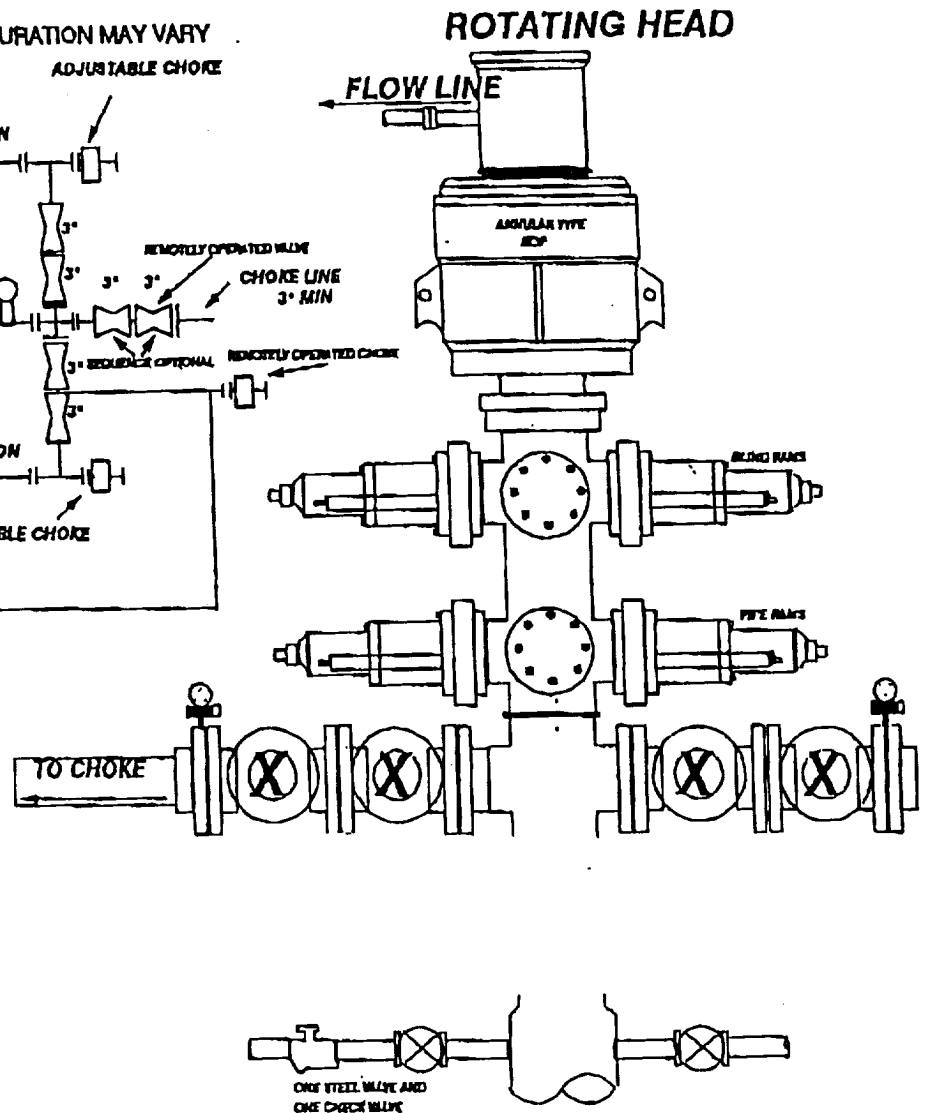
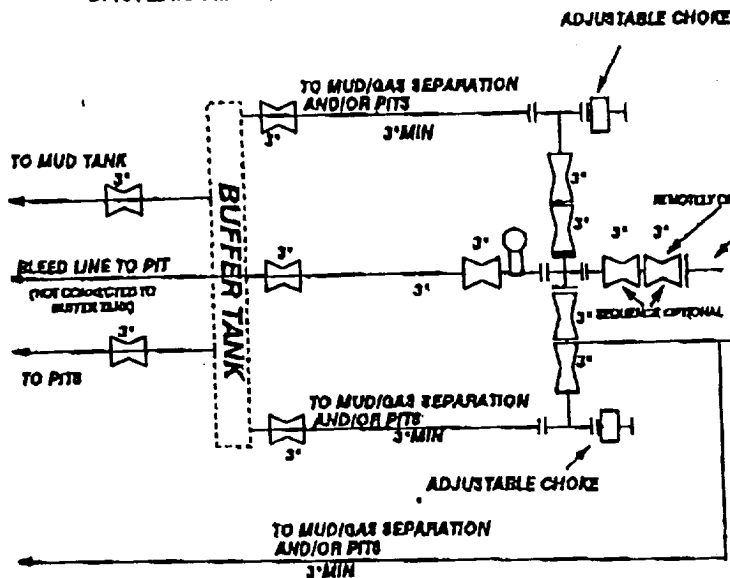


3000# WP BOPE WITH 3000# WP ANNULAR

CHOKE MANIFOLD EQUIPMENT-CONFIGURATION MAY VARY



THE FOLLOWING CONSTITUTE MINIMUM BLOWOUT PREVENTER REQUIREMENTS:

- A. Opening between the ram to be flanged, studded, or clamped.
- B. All connections from operating manifolds to preventers to be all steel hose or tube a minimum of one inch diameter.
- C. The available closing pressure shall be at least 15% in excess of that required with sufficient volume to operate (close, open, and re-close) the preventors.
- D. ALL connections to and from preventer to have a pressure rating equivalent to that of the BOPs.
- E. Manual controls to be installed before drilling cement plug.
- F. Kelly cock to be installed on kelly.
- G. Inside blowout preventer to be available on rig floor.
- H. Dual operating controls: one located by drillers position and the other located a safe distance from the rig floor.
- I. All chokes will be adjustable.

EXHIBIT NO. 1