

DISTRICT I
1825 N. French Dr., Hobbs, NM 88240
DISTRICT II
811 South First, Artesia, NM 88210
DISTRICT III
1000 Rio Brazos Rd., Aztec, NM 87410
DISTRICT IV
2040 South Pacheco, Santa Fe, NM 87505

State of New Mexico
Energy, Minerals and Natural Resources Department

Form C-102
Revised March 17, 1999

Submit to Appropriate District Office
State Lease - 4 Copies
Lease - 3 Copies

OIL CONSERVATION DIVISION

2040 South Pacheco
Santa Fe, New Mexico 87504-2088

☐ AMENDED REPORT

WELL LOCATION AND ACREAGE DEDICATION PLAT

API Number 30-015-31177	Pool Code 72122	Pool Name Big Sinks (Wolfcamp)
Property Code 001796	Property Name POKER LAKE UNIT	Well Number 147
OGRID No. 001801	Operator Name BASS ENTERPRISES PRODUCTION COMPANY	Elevation 3437'

Surface Location

UL or lot No.	Section	Township	Range	Lot Idn	Feet from the	North/South line	Feet from the	East/West line	County
LOT 2	5	25 S	31 E		660	NORTH	1650	EAST	EDDY

Bottom Hole Location If Different From Surface

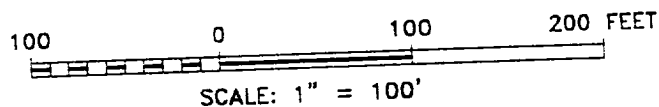
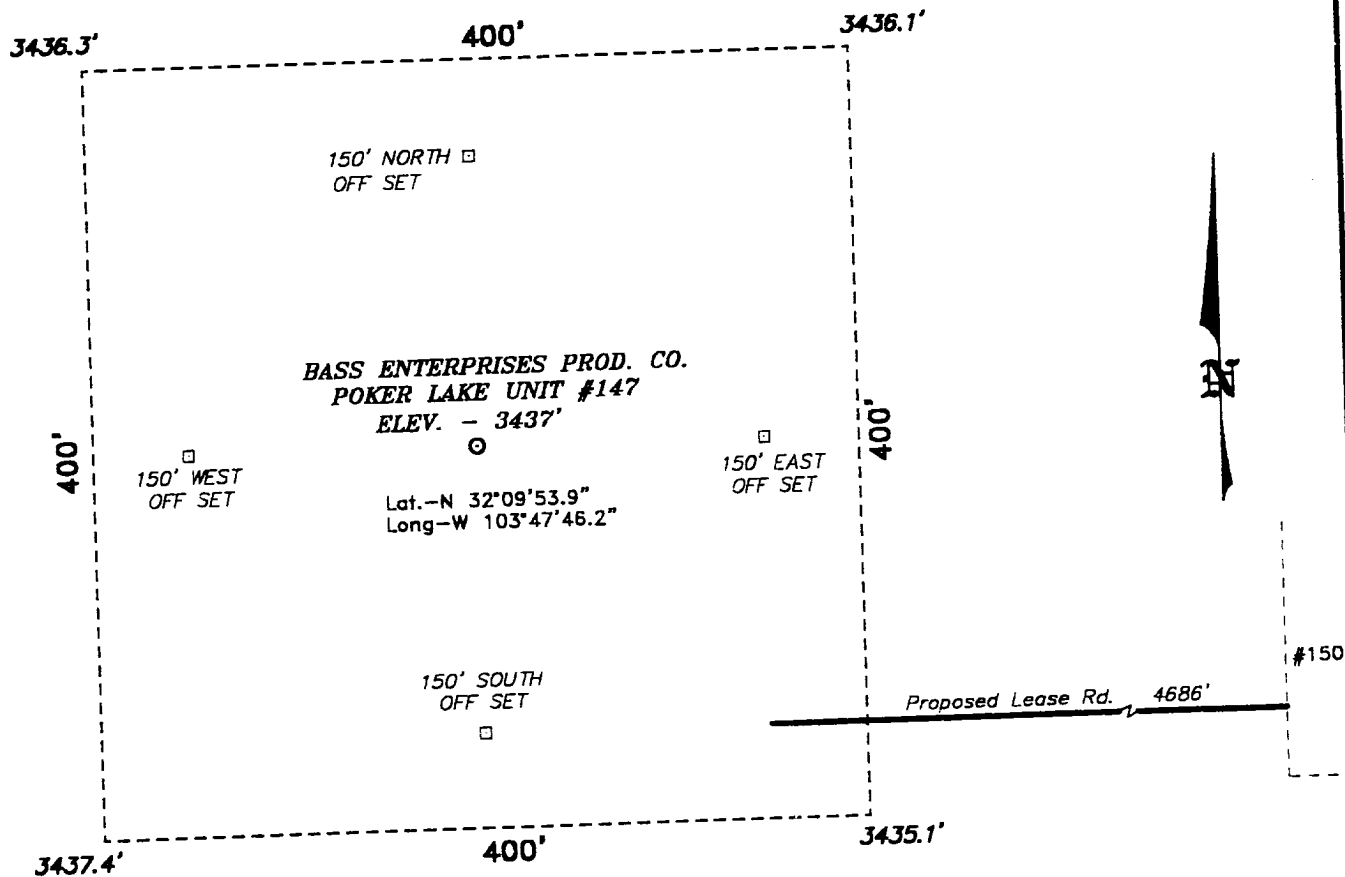
UL or lot No.	Section	Township	Range	Lot Idn	Feet from the	North/South line	Feet from the	East/West line	County
Dedicated Acres 40	Joint or Infill	Consolidation Code	Order No.						

NO ALLOWABLE WILL BE ASSIGNED TO THIS COMPLETION UNTIL ALL INTERESTS HAVE BEEN CONSOLIDATED
OR A NON-STANDARD UNIT HAS BEEN APPROVED BY THE DIVISION

	<p>OPERATOR CERTIFICATION</p> <p>I hereby certify the the information contained herein is true and complete to the best of my knowledge and belief.</p> <p><u>Tami Wilber</u> Signature Tami Wilber Printed Name Production Clerk Title 11/21/00 Date</p>
	<p>SURVEYOR CERTIFICATION</p> <p>I hereby certify that the well location shown on this plat was plotted from field notes of actual surveys made by me or under my supervision, and that the same is true and correct to the best of my belief.</p> <p>March 25, 2008 Date Surveyed Signature & Seal of Professional Surveyor Certificate No. 01834 7977</p> <p>BASIN SURVEYS</p>

SECTION 5, TOWNSHIP 25 SOUTH, RANGE 31 EAST, N.M.P.M.,
EDDY COUNTY, NEW MEXICO.

CONFIDENTIAL



DIRECTIONS TO LOCATION:

FROM THE JUNCTION OF STATE HWY 128 AND CO. RD. 786, GO SOUTHWEST ON CO. RD. 786 APPROX. 5 MILES TO CO. RD. 791; THENCE SOUTH ON CO. RD. 791 APPROX. 2 MILES TO A POINT WHICH LIES APPROX. 1 MILE EAST OF THE PROPOSED WELL LOCATION.

BASS ENTERPRISES PRODUCTION CO.

REF: Poker Lake Unit No. 147 / Well Pad Topo

THE POKER LAKE UNIT No. 147 LOCATED 660' FROM THE NORTH LINE AND 1650' FROM THE EAST LINE OF SECTION 5, TOWNSHIP 25 SOUTH, RANGE 31 EAST,

N.M.P.M., EDDY COUNTY, NEW MEXICO.

Basin Surveys P.O. BOX 1786-HOBBS, NEW MEXICO

W.O. Number: 0183

Drawn By: K. GOAD

Date: 03-27-2000

Disk: KJG #122 - 0183A.DWG

Survey Date: 03-25-2000

Sheet 1 of 1 Sheets