

DISTRICT I *OCID-F-11*
P.O. Box 1380, Hobbs, NM 88241-1980
DISTRICT II
P.O. Box Drawer DD, Artesia, NM 88211-0719
DISTRICT III
1000 Rio Brazos Rd., Aztec, NM 87410
DISTRICT IV
P.O. Box 2088, Santa Fe, NM 87504-2088

State of New Mexico
Energy, Minerals and Natural Resources Department

Form C-10 *2*
Revised February 10, 199
Instructions on back
Submit to Appropriate District Office
State Lease - 4 Copie
Fee Lease - 3 Copie
☐ AMENDED REPORT

OIL CONSERVATION DIVISION

P.O. Box 2088
Santa Fe, New Mexico 87504-2088

WELL LOCATION AND ACREAGE DEDICATION PLAT

¹ API Number 30-015-31499	² Pool Code 97136	³ Pool Name BRUSHY DRAW WOLFCAMP OIL
⁴ Property Code	⁵ Property Name YATES FEDERAL '8'	⁶ Well No. 2
⁷ OGRID Number 022351	⁸ Operator Name TEXACO EXPLORATION & PRODUCTION INC. <i>/</i>	⁹ Elevation GR-3067'

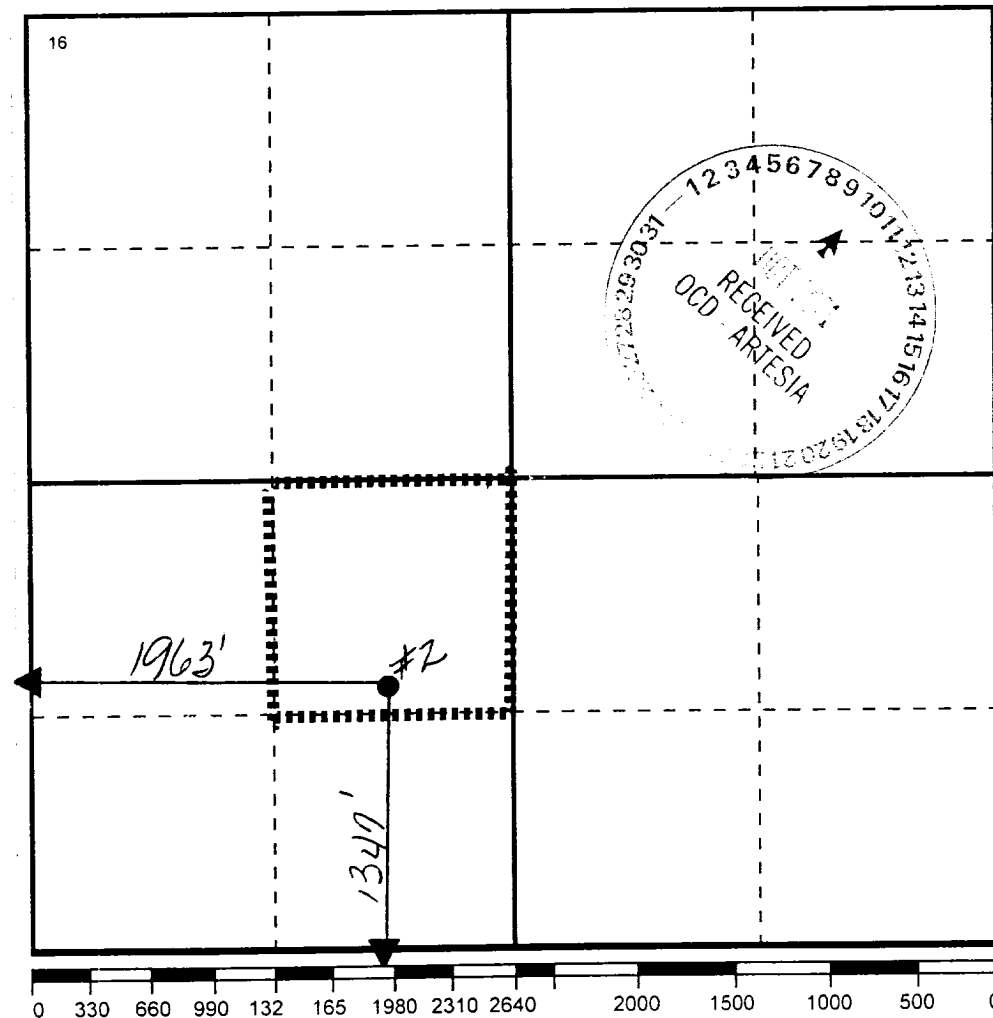
¹⁰ Surface Location

Ul or lot no	Section	Township	Range	Lot.Idn	Feet From The	North/South Line	Feet From The	East/West Line	County
K	8	26-S	30-E		1347	SOUTH	1963	WEST	EDDY

¹¹ Bottom Hole Location If Different From Surface

Ul or lot no	Section	Township	Range	Lot.Idn	Feet From The	North/South Line	Feet From The	East/West Line	County
¹² Dedicated Acre 40	¹³ Joint or Infill No	¹⁴ Consolidation Code	¹⁵ Order No.						

NO ALLOWABLE WILL BE ASSIGNED TO THIS COMPLETION UNTIL ALL INTERESTS HAVE BEEN CONSOLIDATED
OR A NON-STANDARD UNIT HAS BEEN APPROVED BY THE DIVISION



¹⁷ OPERATOR CERTIFICATION I hereby certify that the information contained herein is true and complete to the best of my knowledge and belief
Signature <i>J. Denise Leake</i> Printed Name J. Denise Leake
Positio Engineering Assistant
Date 10/5/01
¹⁸ SURVEYOR CERTIFICATION I hereby certify that the well location shown on this plat was plotted from field notes of actual surveys made by me or under my supervision, and that the same is true and correct to the best of my knowledge and belief.
Date Surveyed
Signature & Seal of Professional Surveyor
Certificate No.