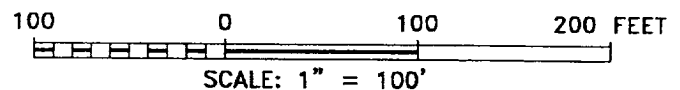
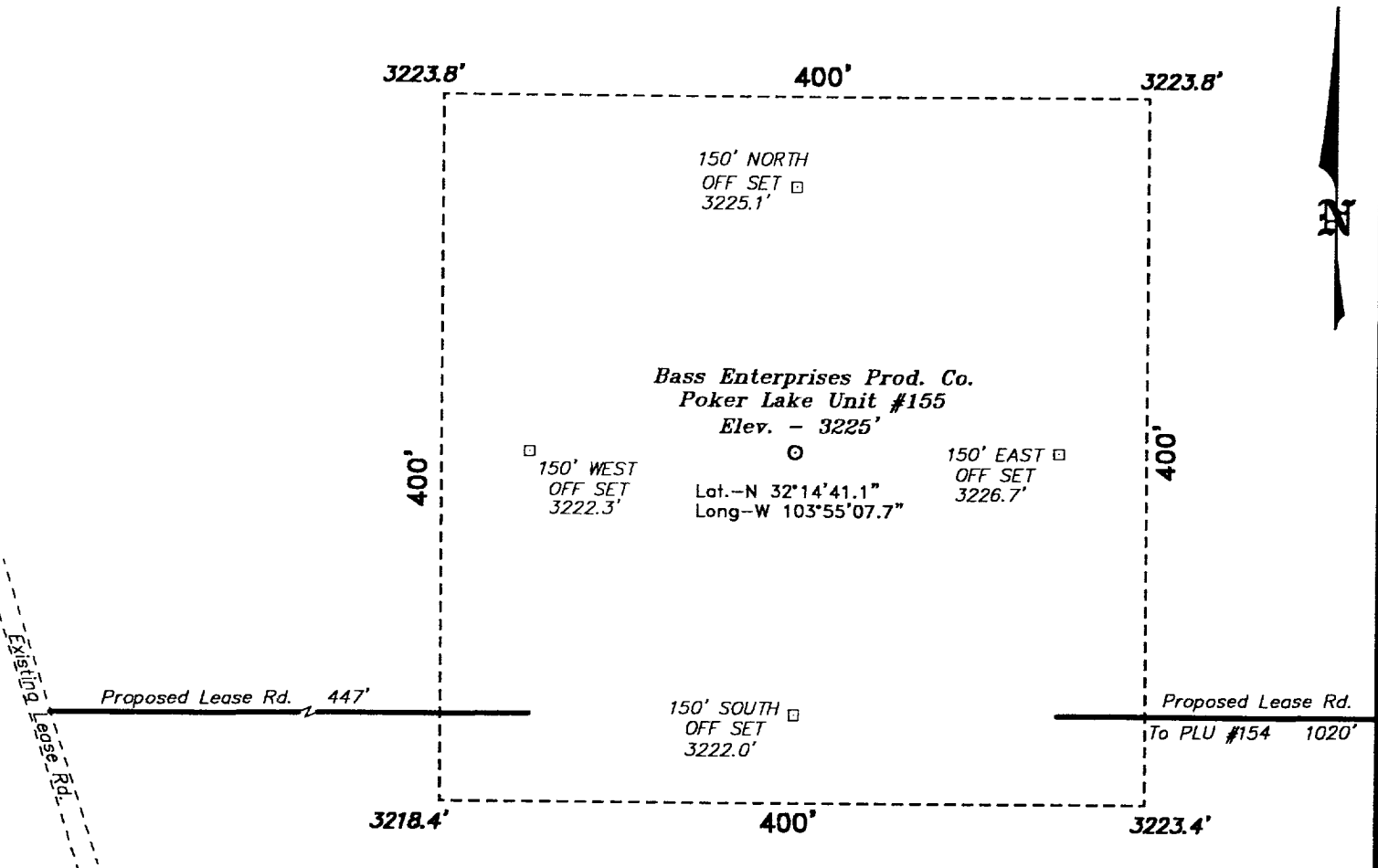


SECTION 6, TOWNS P 24 SOUTH, RANGE
EDDY COUNTY,

EAST, N.M.P.M.,
NEW MEXICO.



DIRECTIONS TO LOCATION:

FROM THE JUNCTION OF STATE HWY 128 & CO. RD. 793, GO SOUTH AND WEST ON CO. RD. 793 APPROX. 4.0 MILES TO A LEASE ROAD; THENCE SOUTH ON LEASE ROAD APPROX. 4.0 MILES TO A PROPOSED LEASE ROAD WHICH LIES 447 FEET WEST OF THE PROPOSED WELL LOCATION.

BASIN SURVEYS P.O. BOX 1786 - HOBBS, NEW MEXICO

W.O. Number: 0448 Drawn By: **K. GOAD**
Date: 08-23-2000 Disk: KJG #122 - 0448A.DWG

BASS ENTERPRISES PRODUCTION CO.

REF: Poker Lake Unit No. 155 / Well Pad Topo

THE POKER LAKE UNIT No. 155 LOCATED 1980' FROM
THE SOUTH LINE AND 1980' FROM THE EAST LINE OF
SECTION 6, TOWNSHIP 24 SOUTH, RANGE 30 EAST,
N.M.P.M., EDDY COUNTY, NEW MEXICO.

Survey Date: 08-21-2000 Sheet 1 of 1 Sheets