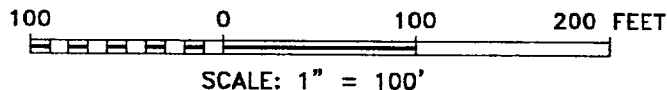
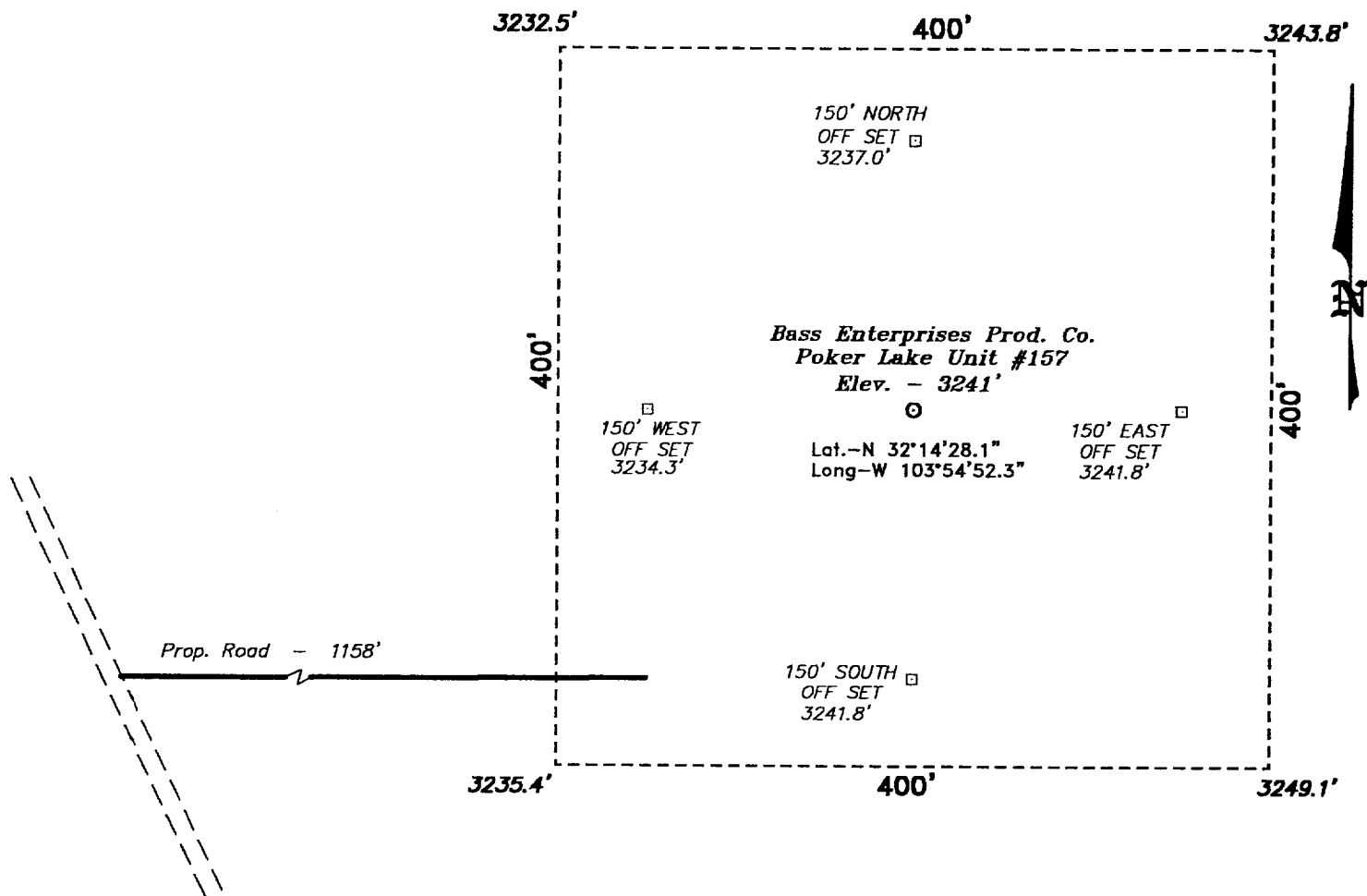


SECTION 6, TOWNSHIP 24 SOUTH, RANGE 30 EAST, N.M.P.M.,
EDDY COUNTY, NEW MEXICO.



DIRECTIONS TO LOCATION:

FROM THE JUNCTION OF STATE HWY 128 & CO. RD. 793, GO SOUTH AND WEST ON CO. RD. 793 APPROX. 4.0 MILES TO A LEASE ROAD; THENCE SOUTH ON LEASE ROAD APPROX. 4 MILES TO A POINT ON THE PROPOSED PLU #156 WELL PAD WHICH LIES 1158 FEET FROM THE THE PROPOSED WELL LOCATION.

BASS ENTERPRISES PRODUCTION CO.

REF: Poker Lake Unit No. 157 / Well Pad Topo

THE POKER LAKE UNIT No. 157 LOCATED 660' FROM
THE SOUTH LINE AND 660' FROM THE EAST LINE OF
SECTION 6, TOWNSHIP 24 SOUTH, RANGE 30 EAST,
N.M.P.M., EDDY COUNTY, NEW MEXICO.

BASIN SURVEYS P.O. BOX 1786-HOBBS, NEW MEXICO

W.O. Number: 0450

Drawn By: **K. GOAD**

Date: 08-17-2000

Disk: KJG #122 - 0450A.DWG

Survey Date: 08-15-2000

Sheet 1 of 1 Sheets