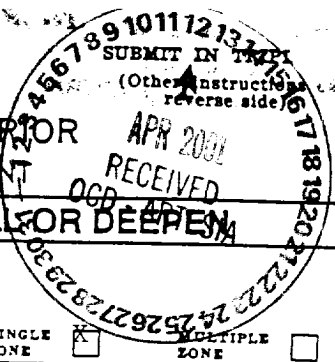


UNITED STATES
DEPARTMENT OF THE INTERIOR
BUREAU OF LAND MANAGEMENT

APPLICATION FOR PERMIT TO DRILL OR DEEPEN



358. *clsf*
FORM APPROVED
OMB NO. 1004-0136
Expires: February 28, 1995

1a. TYPE OF WORK

DRILL ☒

DEEPEN ☐

b. TYPE OF WELL

OIL
WELL ☒

GAS
WELL ☐

OTHER

SINGLE
ZONE ☒

MULTIPLE
ZONE ☐

2. NAME OF OPERATOR

POGO PRODUCING COMPANY

(RICHARD WRIGHT 915-685-8140)

3. ADDRESS AND TELEPHONE NO.

P.O. BOX 10340 MIDLAND, TEXAS 79702-7340 (915-695-8100)

4. LOCATION OF WELL (Report location clearly and in accordance with any State requirements.)*
At surface

660' FNL & 1980' FEL SEC. 13 T25S-R29E EDDY CO. NM

At proposed prod. zone SAME

Unit B

14. DISTANCE IN MILES AND DIRECTION FROM NEAREST TOWN OR POST OFFICE*

Approximately 15 miles Southeast of Loving New Mexico

15. DISTANCE FROM PROPOSED*

LOCATION TO NEAREST
PROPERTY OR LEASE LINE, FT.
(Also to nearest drlg. unit lde, if any)

660'

16. NO. OF ACRES IN LEASE

640

17. NO. OF ACRES ASSIGNED
TO THIS WELL

40

18. DISTANCE FROM PROPOSED LOCATION*
TO NEAREST WELL, DRILLING, COMPLETED,
OR APPLIED FOR, ON THIS LEASE, FT.

1900'

19. PROPOSED DEPTH

8600'

20. ROTARY OR CABLE TOOLS

ROTARY

21. ELEVATIONS (Show whether DF, RT, GR, etc.)

3136' GR.

22. APPROX. DATE WORK WILL START*
WHEN APPROVED

PROPOSED CASING AND CEMENTING PROGRAM

SIZE OF HOLE	GRADE SIZE OF CASING	WEIGHT PER FOOT	SETTING DEPTH	QUANTITY OF CEMENT
24"	Conductor	NA	40'	Cement to surface with Redi-mix.
17½"	H-40 13 3/8"	48	550'	600 Sx. circulate cement to surface
11"	J-55 8 5/8"	32	3100'	1200 Sx " " " "
7 7/8"	J-55 5½"	17 & 15.5	8600'	1350 Sx. Estimate top cement 2000'

1. Drill 24" hole to 40'. Set 40' of 20" conductor pipe and cement to surface with Redi-mix.

2. Drill 17½" hole to 550'. Run and set 550' of 13 3/8" 48# H-40 ST&C casing. Cement with 600 Sx. of Class "C" cement + 2% CaCl + ½# Flocele/Sx. circulate cement to surface.

3. Drill 11" hole to 3100'. Run and set 3100' of 8 5/8" 32# J-55 ST&C casing. Cement with 1200 Sx. of Class "C" cement + 2% CaCl + ½# Flacele/Sx., circulate cement to surface.

4. Drill 7 7/8" hole to 8600'. Run and set 8600' of 5½" casing as follows: 2600' of 5½" 17# J-55 LT&C, 5000' of 5½" 15.5# J-55 LT&C, 1000' of 5½" 17# J-55 LT&C. Cement in two stages DV tool at 5000'. CEment 1st stage with 550 Sx. of Class "H" cement + additives, cement 2nd stage with 800 Sx. of Class "C" cement + additives, estimate top of cement 2000' from surface.

ABOVE SPACE DESCRIBE PROPOSED PROGRAM: If proposal is to deepen, give data on present productive zone and proposed new productive zone. If proposal is to drill or open directionally, give pertinent data on subsurface locations and measured and true vertical depths. Give blowout preventer program, if any.

SIGNED *Jose J. Garcia* TITLE Agent

DATE 01/22/01

(This space for Federal or State office use)

PERMIT NO. _____ APPROVAL DATE _____

Application approval does not warrant or certify that the applicant holds legal or equitable title to those rights in the subject lease which would entitle the applicant to conduct operations thereon.
CONDITIONS OF APPROVAL, IF ANY:

APPROVED
ATTACHED

APPROVED BY *S/ Nery J. Gonzalez* TITLE _____

DATE _____

*See Instructions On Reverse Side

DISTRICT I
P.O. Box 1880, Hobbs, NM 88241-1880

DISTRICT II
P.O. Drawer DD, Artesia, NM 88211-0719

DISTRICT III
1000 Rio Brazos Rd., Aztec, NM 87410

DISTRICT IV
P.O. BOX 2088, SANTA FE, N.M. 87504-2088

State of New Mexico
Energy, Minerals and Natural Resources Department

Form C-102
Revised February 10, 1994
Submit to Appropriate District Office
State Lease - 4 Copies
Fee Lease - 3 Copies

OIL CONSERVATION DIVISION
P.O. Box 2088
Santa Fe, New Mexico 87504-2088

☐ AMENDED REPORT

WELL LOCATION AND ACREAGE DEDICATION PLAT

API Number		Pool Code	Pool Name WILDCAT-BONE SPRING
Property Code 19954	Property Name BRADLEY 13 FEDERAL		Well Number 4
OGRI No. 17891	Operator Name POGO PRODUCING COMPANY		Elevation 3136

Surface Location

UL or lot No. B	Section 13	Township 25-S	Range 29-E	Lot Idn	Feet from the 660	North/South line NORTH	Feet from the 1980	East/West line EAST	County EDDY
--------------------	---------------	------------------	---------------	---------	----------------------	---------------------------	-----------------------	------------------------	----------------

Bottom Hole Location If Different From Surface

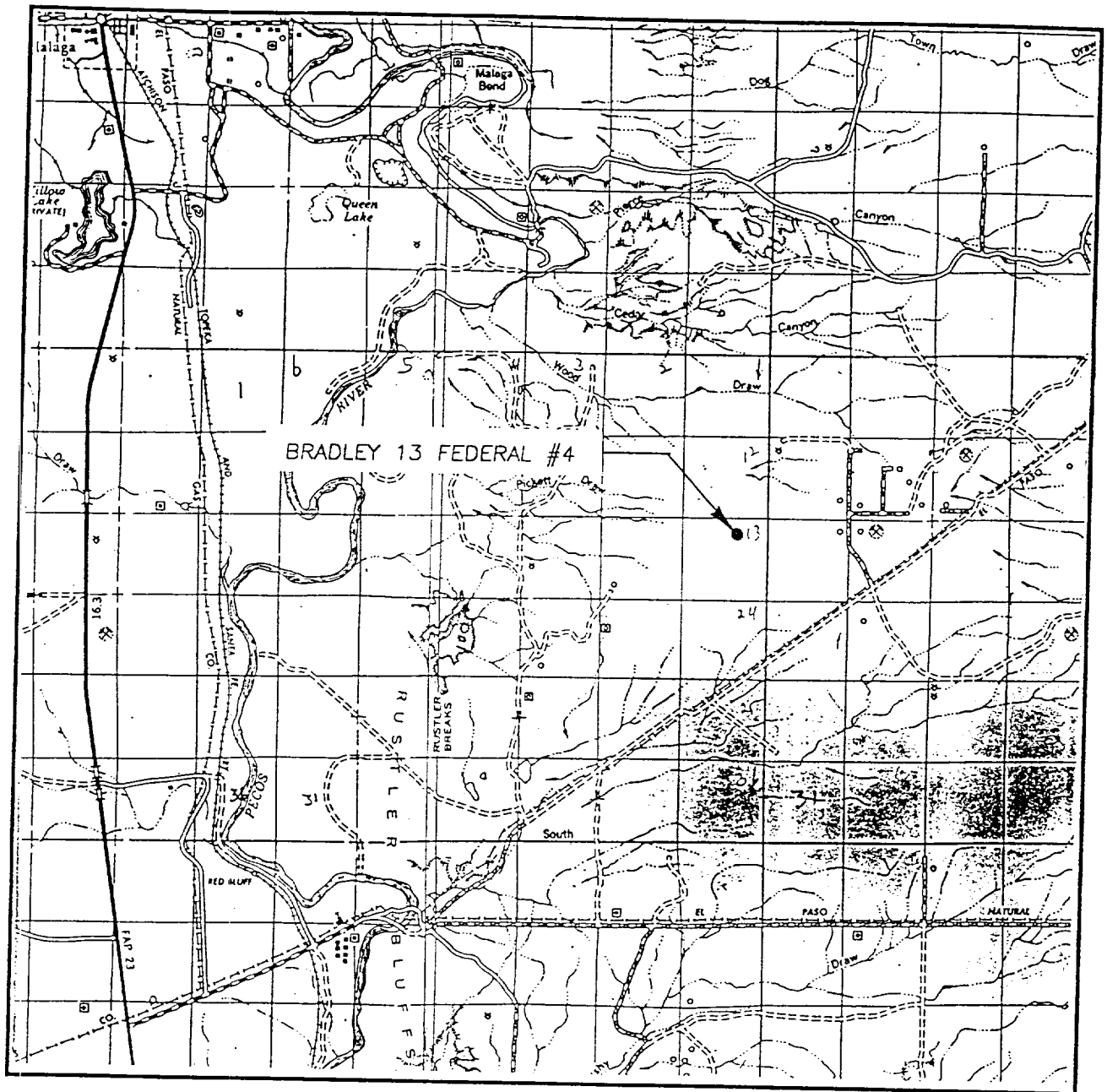
UL or lot No.	Section	Township	Range	Lot Idn	Feet from the	North/South line	Feet from the	East/West line	County
Dedicated Acres 40	Joint or Infill	Consolidation Code	Order No.						

NO ALLOWABLE WILL BE ASSIGNED TO THIS COMPLETION UNTIL ALL INTERESTS HAVE BEEN CONSOLIDATED
OR A NON-STANDARD UNIT HAS BEEN APPROVED BY THE DIVISION

		OPERATOR CERTIFICATION I hereby certify the the information contained herein is true and complete to the best of my knowledge and belief. Signature Joe T. Janica Printed Name Agent Title 01/22/01 Date	
		SURVEYOR CERTIFICATION I hereby certify that the well location shown on this plat was plotted from field notes of actual surveys made by me or under my supervision, and that the same is true and correct to the best of my belief. JANUARY 08, 2001 Date Surveyed Signature & Seal of Professional Surveyor 01-11-1629 Certificate No. RONALD J. EIDSON 3239 GARY EIDSON 12841	

EXHIBIT "A"

VICINITY MAP



SCALE: 1" = 2 MILES

SEC. 13 TWP. 25-S RGE. 29-E

SURVEY N.M.P.M.

COUNTY EDDY

DESCRIPTION 660'FNL & 1980'FEL

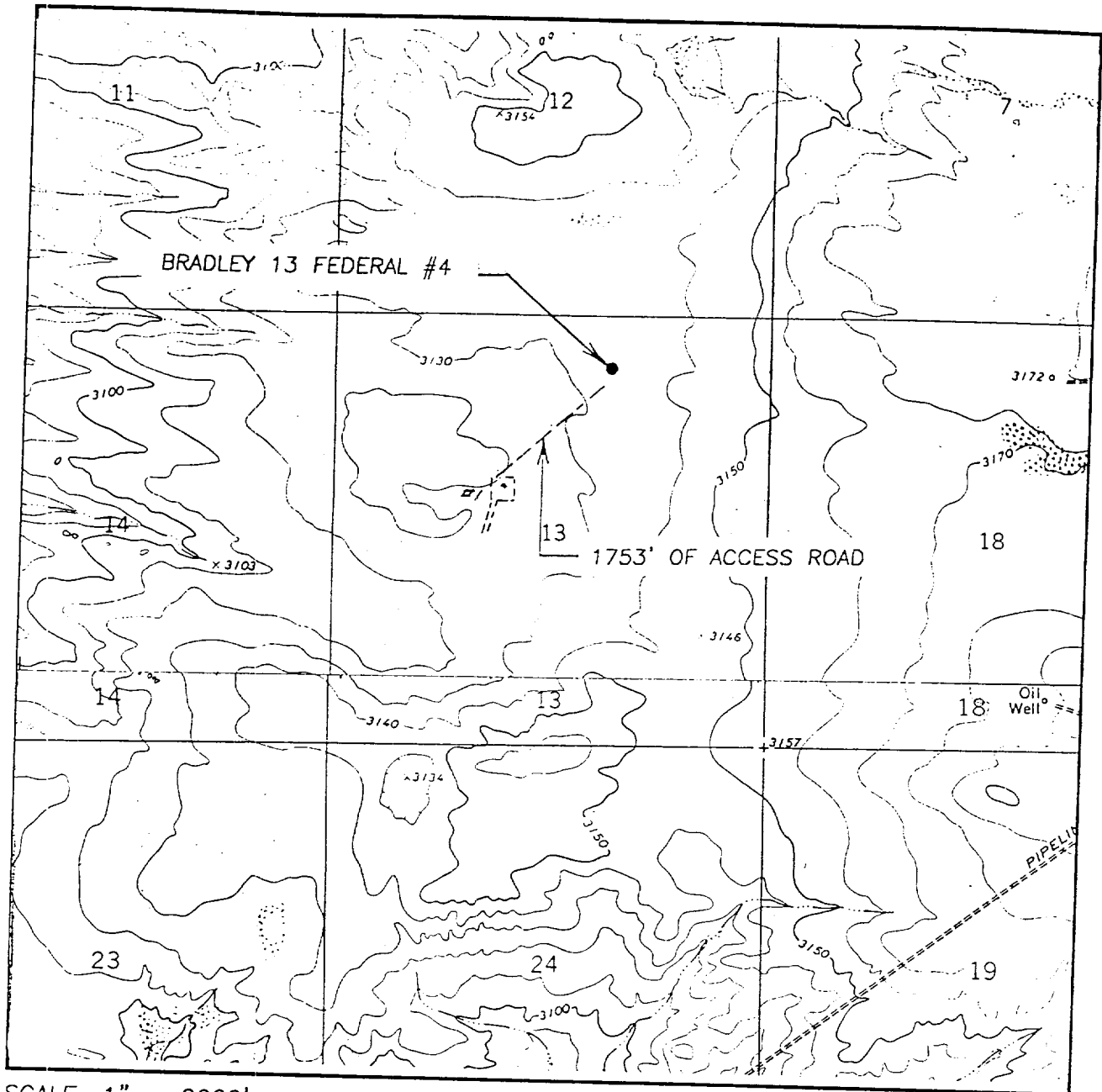
ELEVATION 3136

OPERATOR POGO PRODUCING COMPANY

LEASE BRADLEY 13 FEDERAL

JOHN WEST SURVEYING
HOBBS, NEW MEXICO
(505) 393-3117

LOCATION VERIFICATION MAP



SCALE: 1" = 2000'

CONTOUR INTERVAL: 10'
PIERCE CANYON NW N.M.

SEC. 13 TWP. 25-S RGE. 29-E

SURVEY N.M.P.M.

COUNTY EDDY

DESCRIPTION 660'FNL & 1980'FEL

ELEVATION 3136

OPERATOR POGO PRODUCING COMPANY

LEASE BRADLEY 13 FEDERAL

U.S.G.S. TOPOGRAPHIC MAP
PIERCE CANYON NW N.M.

JOHN WEST SURVEYING
HOBBS, NEW MEXICO
(505) 393-3117

APPLICATION TO DRILL

POGO PRODUCING COMPANY
 BRADLEY "13" FEDERAL # 4
 UNIT "B" SECTION 13
 T25S-R29E EDDY CO. NM

In response to questions asked under Section II of Bulletin NTL-6 the following information on the above well is provided for your consideration.

1. Location: 660' FNL & 1980' FEL SEC. 13 T25S-R29E EDDY CO. NM
2. Elevation above Sea Level: 3136' GR.
3. Geologic name of surface formation: Quaternary Aeolian Deposits.
4. Drilling tools and associated equipment: Conventional rotary drilling rig using drilling mud as a circulating medium for solids removal from hole.
5. Proposed drilling depth: 8600'
6. Estimated tops of geological markers:

Anhydrite	500'	Cherry Canyon	4237'
Delaware Lime	3312'	Brushy Canyon	5481'
Bell Canyon	3344'	Bone Spring	7980'
7. Possible mineral bearing formations:

Possible fresh water in Permian	250'±		
Brushy Canyon	Oil	Bone Spring	Oil
8. Casing program:

Hole size	Interval	OD of casing	Weight	Thread	Collar	Grade
24"	0-40	20"	NA	NA	NA	Conductor
17½"	0-550'	13 3/8"	48	8-R	ST&C	H-40
11"	0-3100'	8 5/8"	32	8-R	ST&C	J-55
7 7/8"	0-8600'	5½"	15.5 17	8-R	LT&C	J-55

ATTENTION TO BUREAU

POGO PRODUCING COMPANY
BRADLEY "13" FEDERAL # 4
UNIT "B" SECTION 13
T25S-R29E EDDY CO. NM

9. CEMENTING & SETTING DEPTH:

20"	Conductor	Set 40' of 20" conductor pipe and cement to surface with Radi-mix.
13 3/8"	Surface	Set 550' of 13 3/8" 48# H-40 ST&C casing. Cement with 600 Sx. of Class "C" cement + 2% CaCl + 1/4# Flocele/Sx circulate cement to surface.
8 5/8"	Intermediate	Set 3100' of 8 5/8" 32# J-55 ST&C casing. Cement with 1200 Sx. of Class "C" cement + additives circulate cement.
5 1/2"	Production	Set 8600' of 5 1/2" casing as follows: 2600' of 5 1/2" 17# LT&C 5000' of 5 1/2" 15.5# J-55 LT&C, 1000' of 5 1/2" 17# J-55 LT&C. Cement in 2 stages: 1st stage 550 Sx. of Class "H" + additives 2nd stage 800 Sx. of Class "C" + additives, estimate top of cement 2000' from surface.

10. PRESSURE CONTROL EQUIPMENT: Exhibit "E". A Series 900 3000 PSI working pressure B.O.P. consting of a double ram type preventor with a bag type annular preventor. The B.O.P. unit will be hydraulically operated. Exhibit "E-1". Choke manifold and closing unit. The B.O.P. will be nipped up on 13 3/8" casing and will be operated at least once each 24 hour period while drilling and blind rams will be operated when out of hole on trips. Full opening stabbing valve and upper kelly cock will be utilized. No abnormal pressure or temperature is expected while drilling.

11. PROPOSED MUD CIRCULATING SYSTEM:

Depth	Mud Wt.	Visc.	Fluid Loss	Type Mud System
40-550'	8.4-8.6	29-34	NC	Fresh water Spud Mud add paper control seepage
550-3100'	10.1-10.3	29-36	NC	Brine water add paper to control seepage and high viscosity sweeps to clean hole.
3100'-8600'	10.1-10.4	32-38	NC	Same as above if water loss control is required use a polymer system to reduce water loss when desired.

Sufficient mud materials will be kept on location at all times in order to combat lost circulation, or unexpected kicks. In order to run DST's, open hole logs, and casing the viscosity and/or water loss may have to be adjusted to meet these needs.

APPLICATION TO DRILL

POGO PRODUCING COMPANY
BRADLEY "13" FEDERAL # 4
UNIT "B" SECTION 13
T25S-R29E EDDY CO. NM

12. TESTING, LOGGING, & COREING PROGRAM:

- A. Open hole logs: Run Dual Laterolog CNL, LDT, Gamma Ray, Caliper from TD to 3100'. Run Gamma Ray, Neutron from 3100' to surface.
- B. No cores or DST's are planned at this time but may be run or taken as shows dictate.
- C. A mud logger may be rigged up on hole at 3100' and remain on hole to TD.

13. POTENTIAL HAZARDS:

No abnormal pressures or temperatures are expected. Hydrogen Sulfide gas may be encountered, H₂S detectors will be in place to detect any presence of unsafe levels of H₂S. No lost circulation is expected to occur. All personnel will be familiar with all aspects of safe operations of all equipment that will be used. Estimated BHP 4250 PSI & estimated BHT 175°.

14. ANTICIPATED STARTING DATE AND DURATION OF OPERATION:

Roads and location construction will begin after the BLM approves the APD. Anticipated spud date will be as soon as pad & road construction has been completed. Drilling time for the well is estimated to take 28 days. If production casing is run an additional 30 days will be required to complete well and construct surface facilities.

15. OTHER FACETS OF OPERATION:

After running production casing, cased hole Gamma-Neutron & Collar logs will be run over all possible pay intervals. If commercial production from the Bone Spring pay is indicated it will be perforated and stimulated. Then if necessary the pay will be swab tested and completed as an oil well.

HYDROGEN SULFIDE DRILLING OPERATIONS PLAN

1. All Company and Contract personnel admitted on location must be trained by a qualified H₂S safety instructor to the following:
 - A. Characteristics of H₂S
 - B. Physical effects and hazards
 - C. Proper use of safety equipment and life support systems.
 - D. Principle and operation of H₂S detectors, warning system and briefing areas.
 - E. Evacuation procedure, routes and first aid.
 - F. Proper use of 30 minute pressure demand air pack.
2. H₂S Detection and Alarm Systems
 - A. H₂S detectors and audio alarm system to be located at bell nipple, end of blooie line (mud pit) and on derrick floor or doghouse.
3. Windsock and/or wind streamers
 - A. Windsock at mudpit area should be high enough to be visible.
 - B. Windsock at briefing area should be high enough to be visible.
 - C. There should be a windsock at entrance to location.
4. Condition Flags and Signs
 - A. Warning sign on access road to location.
 - B. Flags to be displayed on sign at entrance to location. Green flag, normal safe condition. Yellow flag indicates potential pressure and danger. Red flag, danger, H₂S present in dangerous concentration. Only emergency personnel admitted to location.
5. Well control equipment
 - A. See exhibit "E"
6. Communication
 - A. While working under masks chalkboards will be used for communication.
 - B. Hand signals will be used where chalk board is inappropriate.
 - C. Two way radio will be used to communicate off location in case of emergency help is required. In most cases cellular telephoned will be available at most drilling foreman's trailer or living quarters.
7. Drillstem Testing
 - A. Exhausts will be watered.
 - B. Flare line will be equipped with an electric ignitor or a propane pilot light in case gas reaches the surface.
 - C. If location is near any dwelling a closed D.S.T. will be performed.

HYDROGEN SULFIDE DRILLING OPERATIONS PLAN

8. Drilling contractor supervisor will be required to be familiar with the effects H_2S has on tubular goods and other mechanical equipment.
9. If H_2S is encountered, mud system will be altered if necessary to maintain control of formation. A mud gas separator will be brought into service along with H_2S scavengers if necessary.

SURFACE USE PLAN

POGO PRODUCING COMPANY
BRADLEY "13" FEDERAL # 4
UNIT "B" SECTION 13
T25S-R29E EDDY CO. NM

1. EXISTING ROADS. Area map, Exhibit "B" is a reproduction of the New Mexico General Hi-way Co. Map. Exhibit "C" is a reproduction of a topographic map. Existing roads and proposed roads are shown on each exhibit. All roads will be maintained in a condition equal to or better than existed prior to start of construction.

A. Exhibit "A" shows the proposed developement well as staked.

B. From Malaga New Mexico take U.S. Hi-way 285 South for approximately 12.8 miles to CR-725, turn Left on CR-725 go 4± miles cross Pecos River follow road to the Elpaso Pipeline road turn Left follow Pipeline Road 1.8 miles turn Left follow road 2.2 miles turn Right follow road 4± miles to BRADLEY "13" Fed. # 1 well # 4 is 1750' Northeast of well # 1.

C. Flow lines will be laid along road from well # 4 to Tank Battery located at well # 1.

2. PLANNED ACCESS ROADS - Approximately 1750' of new road will be constructed.

A. the access road will be crowned and ditched to a 12'00" wide travel surface with a 40' right-of-way.

B. Gradient on all roads will be less tha 5.00%.

C. Turn outs will be constreted where required.

D. If needed, road will be surfaced with a minimum of 4" of caliche. This material will be obtained from a local source.

E. Centerline for the new access road has been flagged. Earthwork will be as required by field conditions.

F. Culverts in the access road will not be used. The road will be constructed to utilize low water crossings for drainage as required by the Lopography.

3. LOCATION OF EXISTING WELLS IN A ONE-MILE RADIUS EXHIBIT "A-1"

A. Water wells - Wind mill approximately ½ mile Northeast.

B. Disposal wells - None known

C. Drilling wells - None known

D. Producing wells - As shown on Exhibit "A-1"

E. Abandoned wells - As shown on Exhibit "A-1"

SURFACE USE PLAN

POGO PRODUCING COMPANY
BRADLEY "13" FEDERAL # 4
UNIT "B" SECTION 13
T25S-R29E EDDY CO. NM

4. If, upon completion this well is a producer, POGO PRODUCING COMPANY will furnish maps and/or plats showing on site facilities or off site facilities if needed. This will be accompanied with a Sundry Notice. See Exhibit "F" for flowline from # 4 to tank battery at # 1.

5. LOCATION AND TYPE OF WATER SUPPLY

Water will be purchased locally from a private source and trucked over the access roads or piped in flexible lines laid on top of the ground.

6. SOURCE OF CONSTRUCTION MATERIALS

If needed, construction materials will be obtained from the drill site's excavations or from a local source. These materials will be transported over the access route as shown on Exhibit "A".

7. METHODS FOR HANDLING WASTE DISPOSAL

- A.
1. Drill cuttings will be disposed of in the reserve pit.
 2. Trash, waste paper, and garbage will either be contained in a fenced trash trailer or in a trash pit, fenced with mesh wire to prevent wind-scattering during storage. When the rig moves out, all trash and debris left at the site will be contained to prevent scattering and will be buried at least 36" deep within a reasonable period of time. *Handwritten: NO Hand off*
 3. Salts remaining after completion of the well will be picked up by the supplier, including broken sacks.
 4. Sewage from trailer houses will drain into holes with minimum depth of 10'00". These holes will be covered during drilling and backfilled upon completion. A "porta John" will be provided for the rig crews. This will be properly maintained during the drilling operations and removed upon completion of the well.
- B.
- Remaining drilling fluids will be allowed to evaporate in the reserve pit until the pit is dry enough for backfilling. In the event drilling fluids will not evaporate in a reasonable period of time they will be transported by tank truck to a state approved disposal site.

Water produced during testing of the well will be disposed of in the reserve pit. Oil produced during testing of the well will be stored in test tanks until sold and hauled from the site.

8. ANCILLARY FACILITIES

No camps or airstrips will be constructed.

SURFACE USE PLAN

POGO PRODUCING COMPANY
BRADLEY "13" FEDERAL # 4
UNIT "B" SECTION 13
T25S-R29E EDDY CO. NM

9. WELL SITE LAYOUT:

- A. Exhibit "D" shows the proposed well site layout.
- B. This exhibit indicated proposed location of reserve and sump pits and living facilities.
- C. Mud pits in the active circulating system will be steel pits & the reserve pit is proposed to be unlined unless subsurface condition encountered during pit construction indicate that lining is needed for lateral containment of fluids.
- D. If needed, the reserve pit is to be lined with polyethelene. The pit liner will be 6 mils thick. Pit liner will extend a minimum of 2'00" over the reserve pits dikes where the liner will be anchored down.
- E. The reserve pit will be fenced on three sides with four strands of barbed wire during drilling and completion phases. The fourth side will be fenced after all drilling operations have ceased. If the well is a producer, the reserve pit fence will be torn down. The reserve pit and those areas of the location not essential to production facilities will be reclaimed and seeded per BLM requirements.

10. PLANS FOR RESTORATION OF SURFACE:

Rehabilitation of the location and reserve pit will start in a timely manner after all drilling operations cease. The type of reclamation will depend on whether the well is a producer or a dry hole.

However, in either event, the reserve pit will be allowed to dry properly, and fluid removed and disposed of in accordance with Article 7.B as previously noted. The pit area will then be leveled and contoured to conform to the original and surrounding area. Drainage systems, if any, will be reshaped to the original configuration with provisions made to alleviate erosion. These may need to be modified in certain circumstances to prevent inundation of the location's pad and surface facilities. After the area has been shaped and contoured, topsoil from the spoil pile will be placed over the disturbed area to the extent possible. Revegetation procedures will comply with BLM standards.

If the well is a dry hole, the pad and road area will be contoured to match the existing terrain. Topsoil will be spread to the extent possible. Revegetation will comply with BLM standards.

Should the well be a producer, the previously noted procedures will apply to those areas which are not required for production facilities.

SURFACE USE PLAN

POGO PRODUCING COMPANY
BRADLEY "13" FEDERAL # 4
UNIT "B" SECTION 13
T25S-R29E EDDY CO. NM

11. OTHER INFORMATION:

- A. Topography consists of sand dunes with a slight dip toward the West. Deep sandy soil supports native grasses, mesquite, and shinnery Oak.
- B. Surface is owned by the Bureau of Land Management U.S. Department of Interior. Surface is used for grazing of livestock and is leased to ranchers for this purpose.
- C. An Archaeological survey has been conducted on this location and has been filed with the Carlsbad Field Office. (NMCRIS # 59326)
- D. There are no dwellings or habitation within three miles of this location.

12. OPERATORS REPRESENTATIVE:

Before construction:

TIERRA EXPLORATION INC.
P.O. BOX 2188
HOBBS, NEW MEXICO 88241
OFFICE PHONE 505-391-8503
JOE T. JANICA

During and after construction:

POGO PRODUCING COMPANY
P.O. BOX 10340
MIDLAND, TEXAS 79702-7340
OFFICE PHONE 915-685-8100
MR. RICHARD WRIGHT 915-685-8140

13. CERTIFICATION: - I hereby certify that I, or persons under my direct supervision, have inspected the proposed drill site and access route; that I am familiar with the conditions which currently exist; that the statements made in this plan are to the best of my knowledge, true and correct; and that the work associated with the operations proposed herein will be performed by Pogo Producing company, its contractors/subcontractors is in the conformity with this plan and the terms and conditions under which it is approved. This statement is subject to the provision of U.S.C. 1001 for the filing of a false statement.

NAME

:

Joe T. Janica

DATE

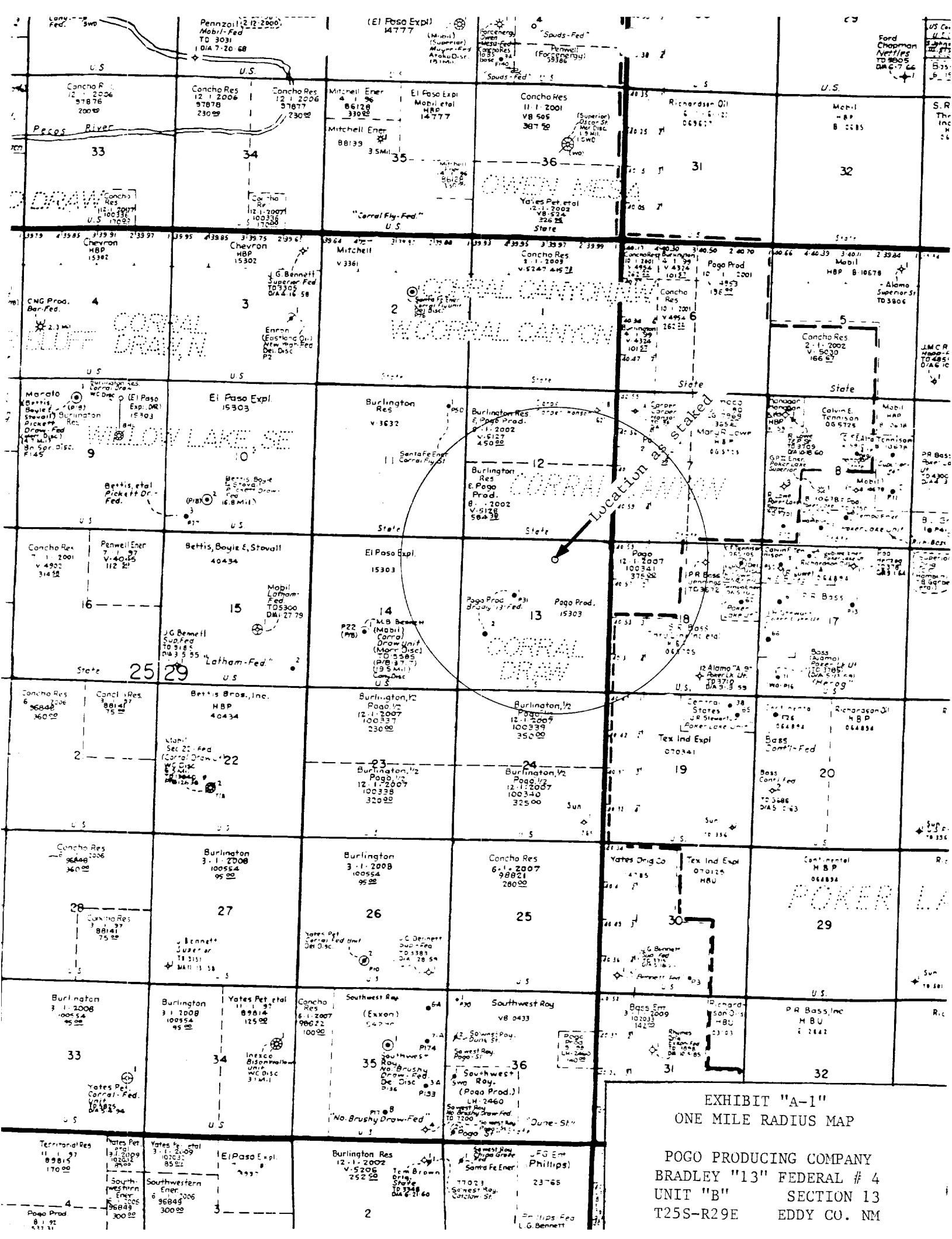
:

01/22/01

TITLE

:

Agent



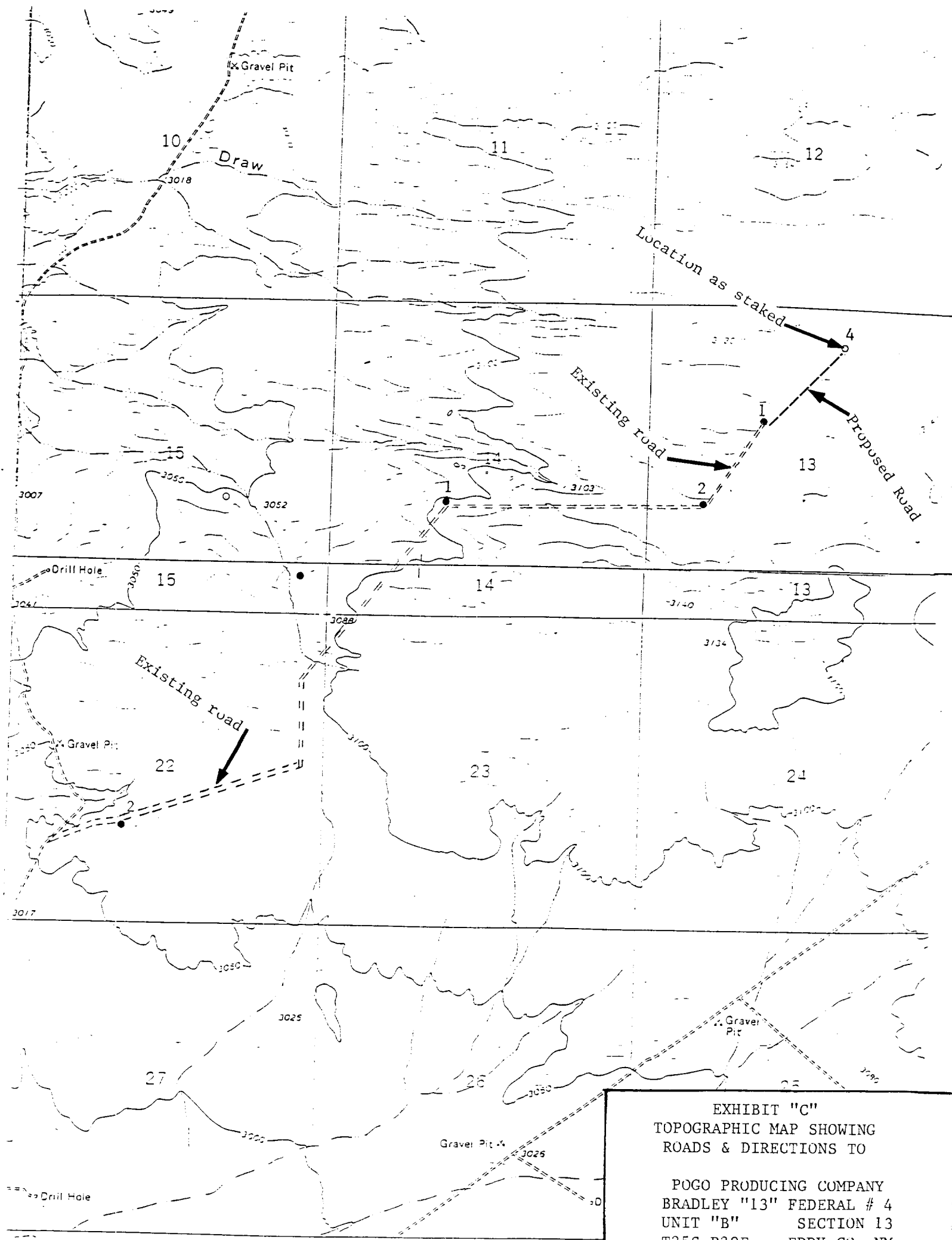
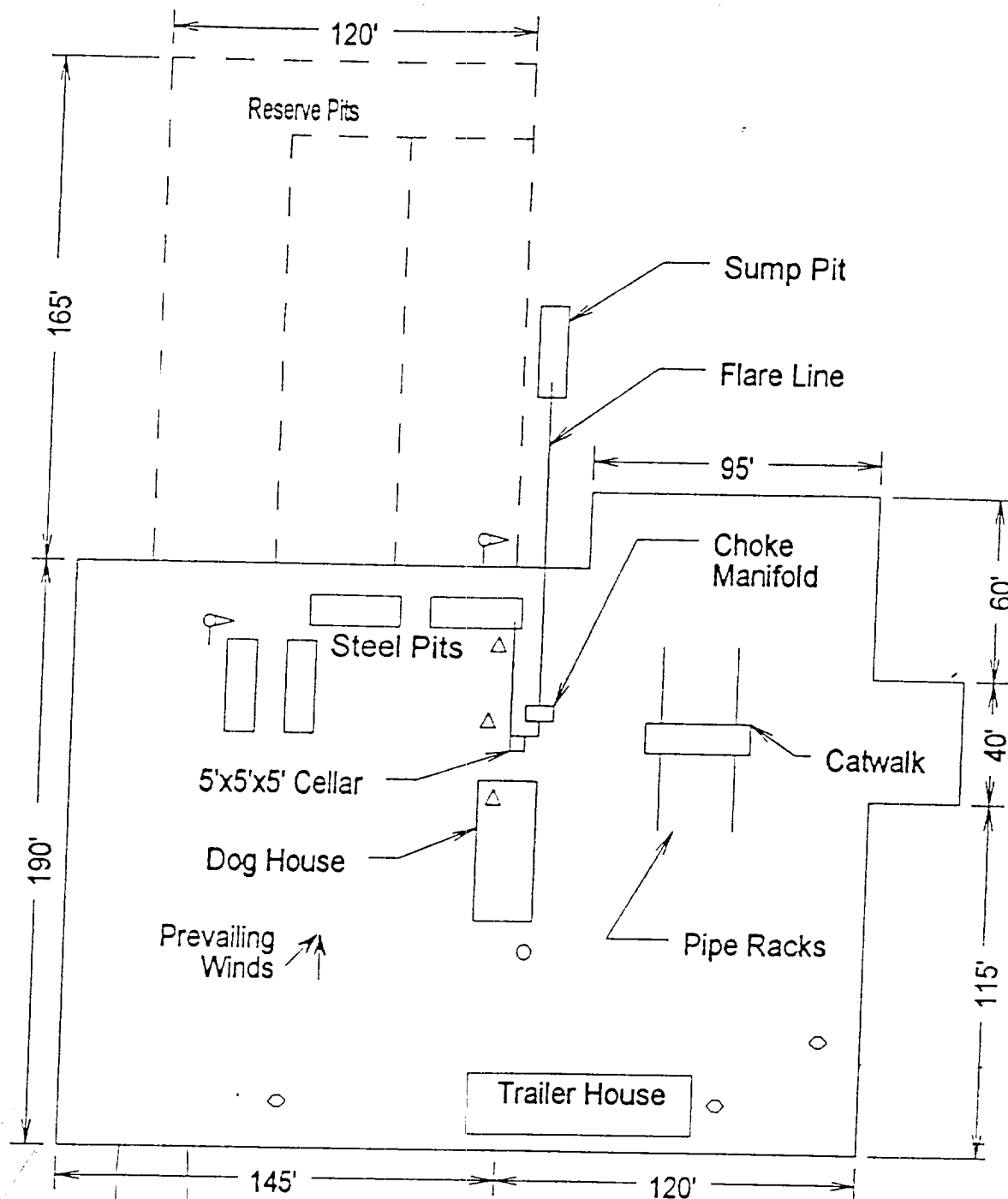


EXHIBIT "C"
TOPOGRAPHIC MAP SHOWING
ROADS & DIRECTIONS TO

POGO PRODUCING COMPANY
BRADLEY "13" FEDERAL # 4
UNIT "B" SECTION 13
T25C-D200 EDDY CO. NM



- Wind Direction Indicators (wind sock or streamers)
- △ H2S Monitors (alarms at bell nipple and shale shaker)
- Briefing Areas
- Remote BOP Closing Unit
- Sign and Condition Flags

EXHIBIT "D"
RIG LAY OUT PLAT

POGO PRODUCING COMPANY
BRADLEY "13" FEDERAL # 4
UNIT "B" SECTION 13
T25S-R29E EDDY CO. NM

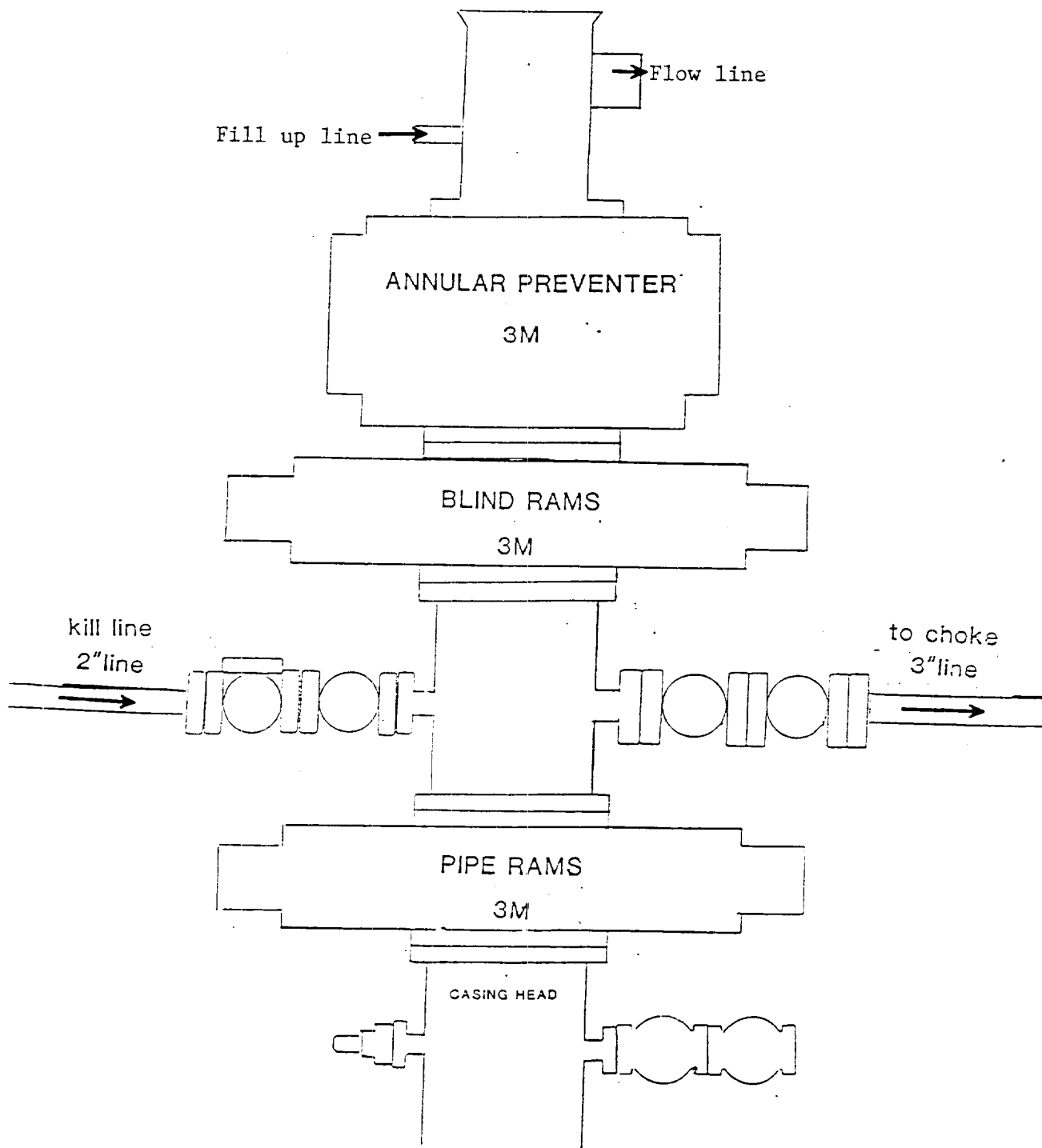
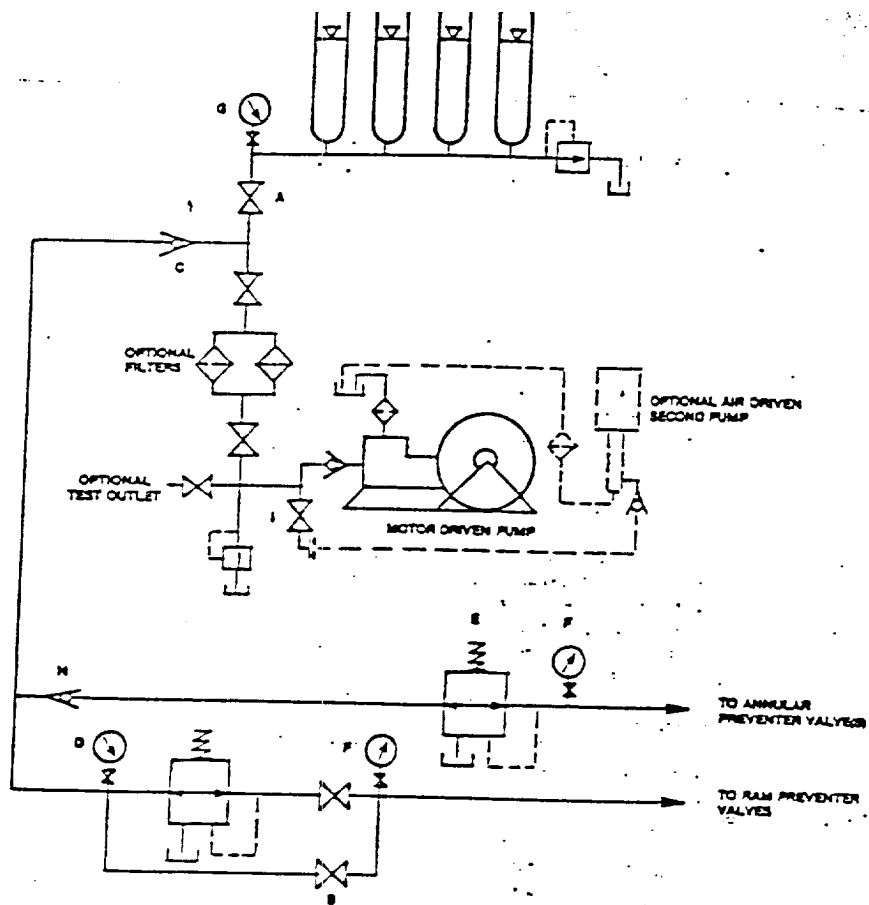


EXHIBIT "E"
SKETCH OF B.O.P. TO BE USED ON

POGO PRODUCING COMPANY
BRADLEY "13" FEDERAL # 4
UNIT "B" SECTION 13
T25S-R29E EDDY CO. NM



HAND ADJUSTABLE CHOKE

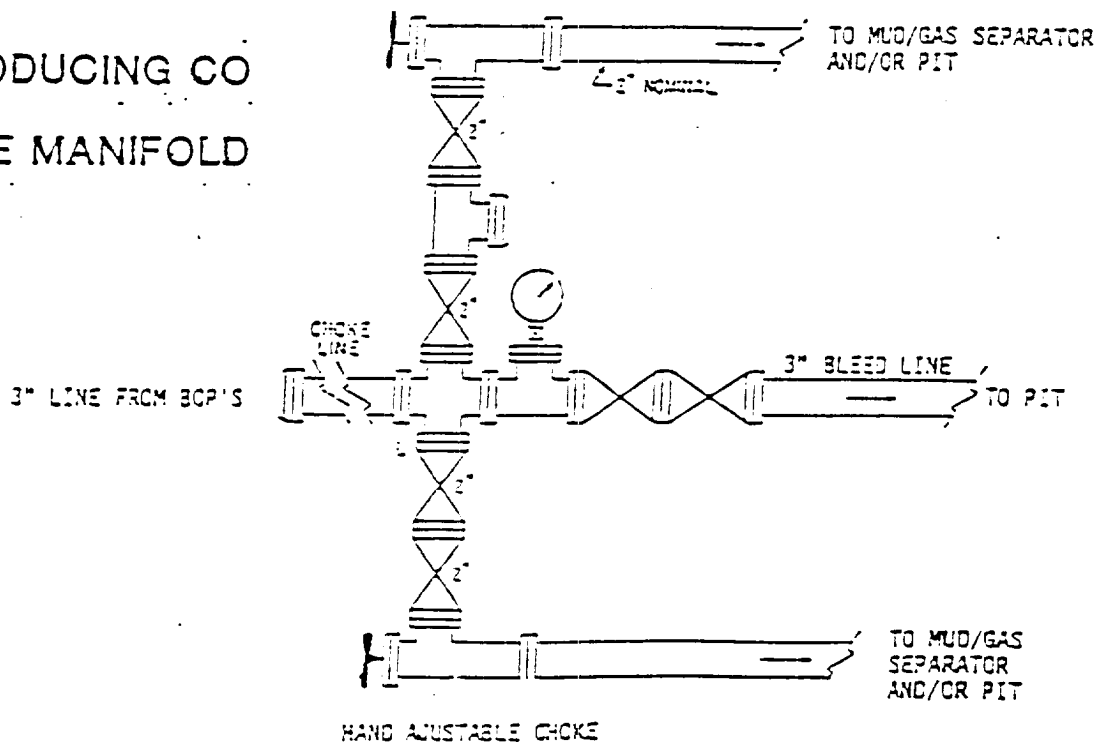


EXHIBIT "E-1"
CHOKE MANIFOLD & CLOSING UNIT

POGO PRODUCING COMPANY
BRADLEY "13" FEDERAL # 4
UNIT "B" SECTION 13
T25S-R29E EDDY CO. NM

POGO PRODUCING CO
3M CHOKE MANIFOLD

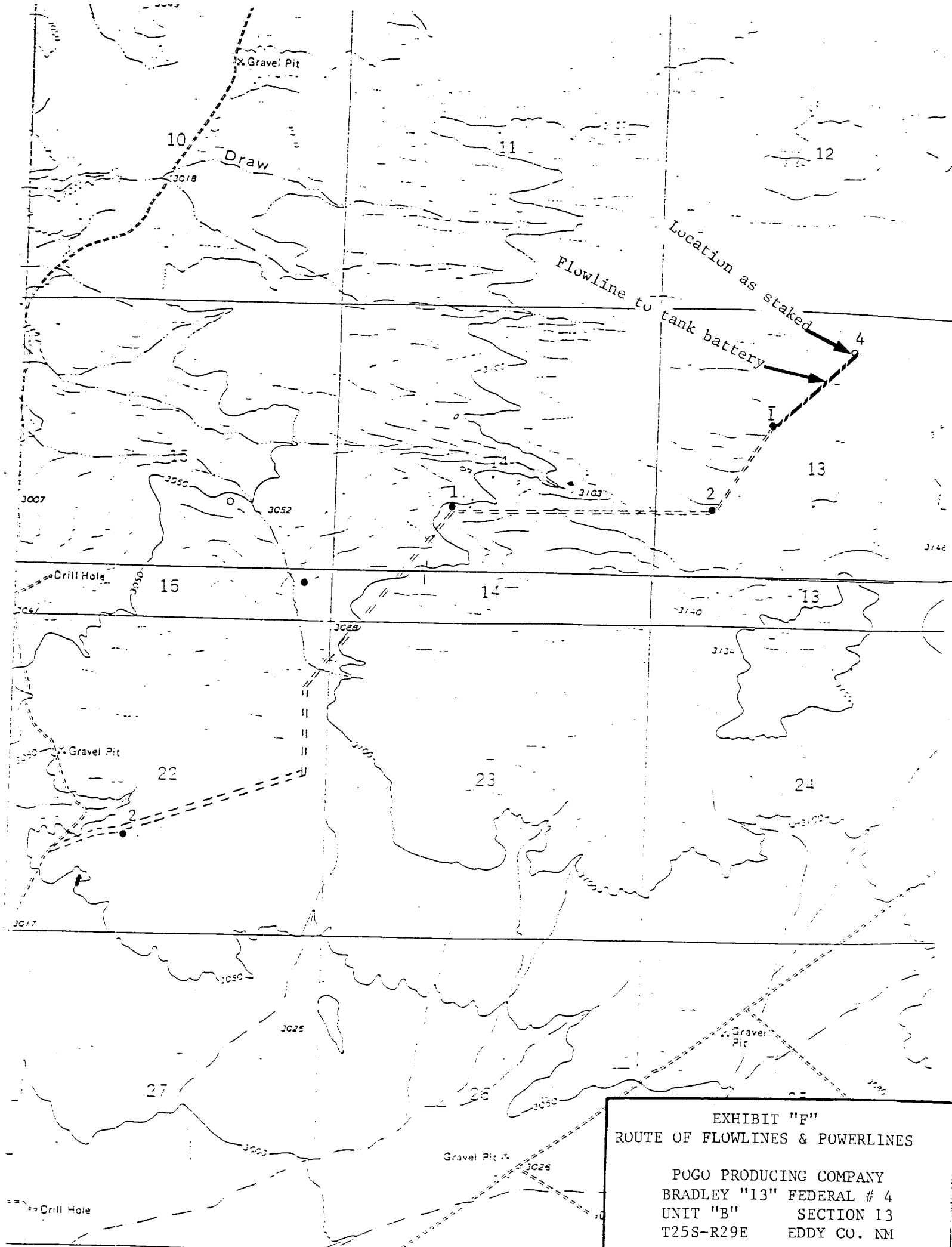


EXHIBIT "F"
ROUTE OF FLOWLINES & POWERLINES

POGO PRODUCING COMPANY
BRADLEY "13" FEDERAL # 4
UNIT "B" SECTION 13
T25S-R29E EDDY CO. NM