

District I  
1625 N. French Dr., Hobbs, NM 88240  
District II  
811 S. 1st Street, Artesia, NM 88210  
District III  
1000 Rio Brazos Rd., Aztec, NM 87410  
District IV  
2040 South Pacheco, Santa Fe, NM 87505

State of New Mexico  
Energy, Minerals & Natural Resources

Oil Conservation Division  
2040 South Pacheco  
Santa Fe, NM 87505

Form C-101

Revised March 17, 1999

Submit to appropriate District Office  
State Lease - 6 Copies  
Fee Lease - 5 Copies

☐ AMENDED REPORT

APPLICATION FOR PERMIT TO DRILL, RE-ENTER, DEEPEN, PLUG BACK, OR ADD A ZONE

<sup>1</sup> Operator Name and Address Texaco Exploration & Production 500 N. Loraine Midland, Texas 79702		<sup>2</sup> OGRID Number 022351
<sup>4</sup> Property Code 10300	<sup>3</sup> Property Name COTTON DRAW UNIT	<sup>5</sup> API Number 30- OIS - 31889
		<sup>6</sup> Well No. 90

<sup>7</sup> Surface Location

Tract or lot no.	Section	Township	Range	Lot Idn	Feet from the	North South Line	Feet from the	East/West line	County
D	36	24-S	31-E		660'	NORTH	660'	WEST	EDDY

<sup>8</sup> Proposed Bottom Hole Location If Different From Surface

Tract or lot no.	Section	Township	Range	Lot Idn	Feet from the	North South Line	Feet from the	East/West line	County

<sup>9</sup> Proposed Pool 1

PADUCA; MORROW

<sup>10</sup> Proposed Pool 2

<sup>11</sup> Work Type Code N	<sup>12</sup> Well Type Code G	<sup>13</sup> Cable/Rotary ROTARY	<sup>14</sup> Lease Type Code S	<sup>15</sup> Ground Level Elevation 3498'
<sup>16</sup> Multiple NO	<sup>17</sup> Proposed Depth 15200'	<sup>18</sup> Formation MORROW	<sup>19</sup> Contractor	<sup>20</sup> Spud Date 7/15/01

<sup>21</sup> Proposed Casing and Cement Program

Hole Size	Casing Size	Casing weight/foot	Setting Depth	Sacks of Cement	Estimated TOC
17 1/2"	13 3/8"	48#	700'	910	CIRCULATE
12 1/4"	9 5/8"	36#	4300'	1940	CIRCULATE
8 1/2"	7"	29#	12800'	6290	CIRCULATE
6"	5"	18#	15200'	360	CIRCULATE

<sup>22</sup> Describe the proposed program. If this application is to DEEPEN or PLUG BACK, give the data on the present productive zone and proposed new productive zone.

Describe the blowout prevention program, if any. Use additional sheets if necessary.

CEMENTING PROGRAM:

SURFACE CASING: 910 sacks Class C w/2% Gel, 2% CaCl<sub>2</sub> (14.8 PPG, 1.34 CF/S, 6.40 GW/S).

INTERMEDIATE CASING 1: 1410 sacks 35/65 Poz Class H w/6% Gel, 5% Salt, 1/4# FC (12.8 PPG, 1.94 CF/S, 10.46 GW/S). F/B 530 sacks Class H (15.6 PPG, 1.18 CF/S, 5.20 GW/S).

INTERMEDIATE CASING 2: 1060 sacks 50/50 Poz Class H w/2% Gel, 5% Salt, 1/4# FC (14.2 PPG, 1.35 CF/S, 6.30 GW/S). F/B 270 sacks Class H (15.6 PPG, 1.18 CF/S, 5.20 GW/S). F/B 4380 sacks 35/65 Poz Class H w/6% Gel, 5% Salt, 1/4# FC (12.4 PPG, 2.14 CF/S, 10.46 GW/S).

PRODUCTION CASING: 360 sacks Gas Block (16.4 PPG, 1.09 CF/S, 5.81 GW/S). F/B 580 sack Class H (15.6 PPG, 1.18 CF/S, 5.20 GW/S).

<sup>23</sup> I hereby certify that the information given above is true and complete to the best of my knowledge and belief.

Signature:

*A. Phil Ryan*

Printed name: A. Phil Ryan

Title: Commission Coordinator

Date:

6/25/01

Phone:

(915) 688-4606

BK OIL CONSERVATION DIVISION

Approved by: *ORIGINAL SIGNED BY TIM W. GUM*  
DISTRICT 4 SUPERVISOR

Title:

Approval Date: JUL 22 2001

Expiration Date: JUL 22 2002

Conditions of Approval:

Attached ☐

DISTRICT I  
P. O. Box 1980, Hobbs, NM 88240

DISTRICT II  
P. O. Drawer DD, Artesia, NM 88210

DISTRICT III  
1000 Rio Brazos Rd., Aztec, NM 87410

DISTRICT IV  
P. O. Box 2088, Santa Fe, NM 87504-2088

State of New Mexico  
Energy, Minerals and Natural Resources Department

Form C-102  
Revised February 10, 1994  
Instructions on back

OIL CONSERVATION DIVISION  
PO Box 2088  
Santa Fe, NM 87504-2088

Submit to Appropriate District Office

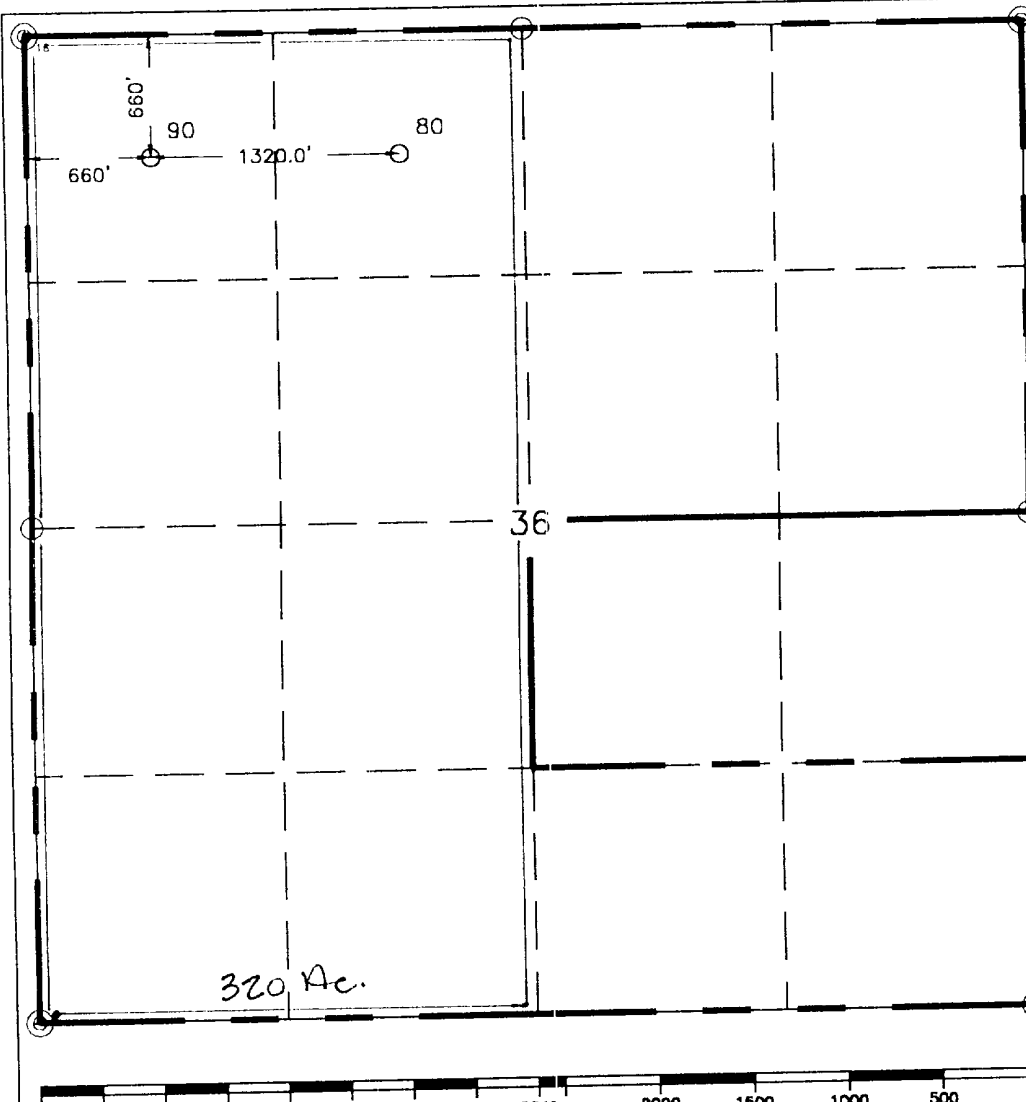
State Lease-4 copies  
Fee Lease-3 copies

☐ AMENDED REPORT

WELL LOCATION AND ACREAGE DEDICATION PLAT

1 API Number		2 Pool Code		3 Pool Name Paduca Morrow					
4 Property Code		5 Property Name Cotton Draw Unit						6 Well Number 90	
7 GGRID No. 22351		8 Operator Name TEXACO EXPLORATION & PRODUCTION, INC.						9 Elevation 3498'	
10 Surface Location									
UL or lot no. D	Section 36	Township 24-S	Range 31-E	Lot Idn	Feet from the 660'	North/South line North	Feet from the 660'	East/West line West	7 County Eddy
11 Bottom Hole Location If Different From Surface									
UL or lot no.	Section	Township	Range	Lot Idn	Feet from the	North/South line	Feet from the	East/West line	7 County
12 Dedicated Acres 320		13 Joint or Infill		14 Consolidation Code		15 Order No.			

NO ALLOWABLE WILL BE ASSIGNED TO THIS COMPLETION UNTIL ALL INTERESTS HAVE BEEN CONSOLIDATED  
OR A NON-STANDARD UNIT HAS BEEN APPROVED BY THE DIVISION.

	16 OPERATOR CERTIFICATION	
	I hereby certify that the information contained herein is true and complete to the best of my knowledge and belief.	
	Signature <i>A. Phil Ryan</i>	
	Printed Name A. Phil Ryan	
	Position Commissioner Coordinator	
Company Texaco Expl. & Prod. Inc.		
Date June 14, 2001		
17 SURVEYOR CERTIFICATION		
I hereby certify that the well location shown on this plat was plotted from field notes of actual surveys made by me or under my supervision, and that the same is true and correct to the best of my knowledge and belief.		
Date Surveyed June 11, 2001		
Signature & Seal of Professional Surveyor <i>John S. Piper</i>		
Certificate No. 7254 John S. Piper		
Sheet		

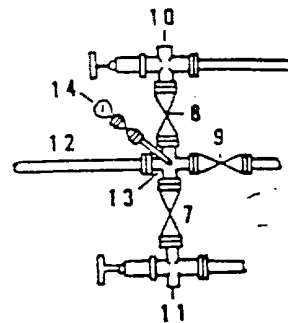
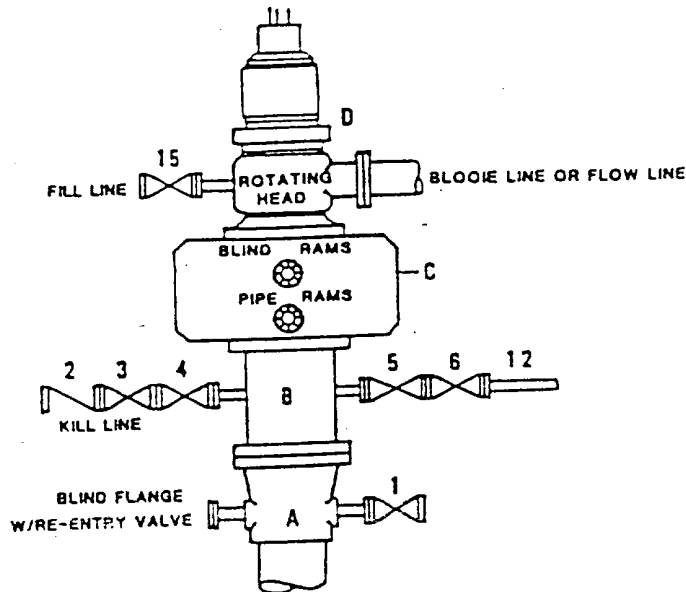
○ = Staked Location   ● = Producing Well   = Injection Well   ⊕ = Water Supply Well   ⊛ = Plugged & Abandon Well  
⊙ = Found Section Corner, 2 or 3" Iron Pipe & GLO B.C.   ○ = Found 1/4 Section Corner, 1" Iron Pipe & GLO B.C.

ADDITIONAL INFORMATION ON THE LOCATION

State Plane Coordinates		Easting 684367.78	
Northing 429404.62		Longitude 103°44'14.753"	
Latitude 32°10'44.928"		Combined Grid Factor	
Zone North American Datum		Coordinate File	
East 1927		0.99978179 Cotton27.cr5	
Drawing File		Field Book	
CDU_90.dwg		Eddy County 8, Pg. 44	

**DRILLING CONTROL  
CONDITION II-B 3000 WP  
FOR AIR DRILLING OR  
WHERE NITROGEN OR AIR BLOWS ARE EXPECTED**

H<sub>2</sub>S TRIM REQUIRED  
YES \_\_\_\_\_ NO X



DRILLING CONTROL

MATERIAL LIST - CONDITION II - B

- |                   |   |
|-------------------|---|
| A                 | Texaco Wellhead   |
| B                 | 3000# W.P. drilling spool with a 2" minimum flanged outlet for kill line and 3" minimum flanged outlet for choke line.  |
| C                 | 3000# W.P. Dual ram type preventer, hydraulic operated with 1" steel, 3000# W.P. control lines (where sub-structure height is adequate, 2 - 3000# W.P. single ram type preventers may be utilized). |
| D                 | Rotating Head with fill up outlet and extended Blooe Line.  |
| 1, 3, 4,<br>7, 8, | 2" minimum 3000# W.P. flanged full opening steel gate valve, or Halliburton Lo Torc Plug valve.   |
| 2                 | 2" minimum 3000# W.P. back pressure valve.  |
| 5, 6, 9           | 3" minimum 3000# W.P. flanged full opening steel gate valve, or Halliburton Lo Torc Plug valve.   |
| 12                | 3" minimum schedule 80, Grade "B", seamless line pipe.  |
| 13                | 2" minimum x 3" minimum 3000# W.P. flanged cross.   |
| 10, 11            | 2" minimum 3000# W.P. adjustable choke bodies.  |
| 14                | Cameron Mud Gauge or equivalent (location optional in choke line).  |
| 15                | 2" minimum 3000# W.P. flanged or threaded full opening steel gate valve, or Halliburton Lo Torc Plug valve.   |



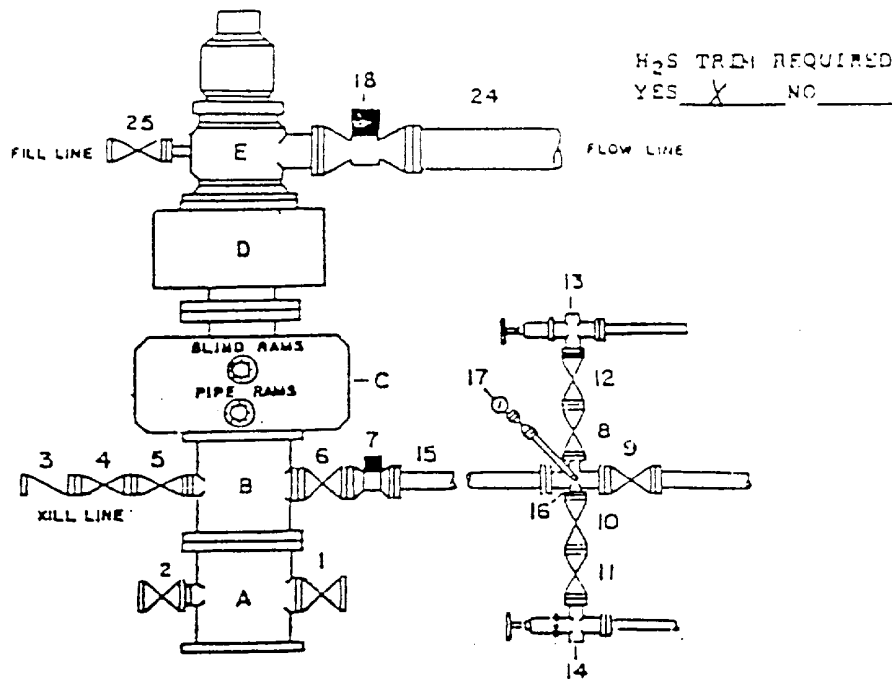
TEXACO, INC.  
MIDLAND DIVISION  
MIDLAND, TEXAS



SCALE	DATE	EST. NO.	DWG. NO.
DRAWN BY			
CHECKED BY			
APPROVED BY			

EXHIBIT C

DRILLING CONTROL  
CONDITION IV-B-5000 PSI WP



DRILLING CONTROL  
MATERIAL LIST - CONDITION IV - B

- A      Texaco Wellhead
- B      5000# W.P. drilling spool with a minimum 1" flanged outlet for kill line and 1" minimum flanged outlet for choke line.
- C      5000# W.P. Dual ram type preventer, hydraulic operated with 1" steel, 5000# W.P. control lines.
- D      5000# W.P. Annular preventer, hydraulic operated with 1" steel, 5000# W.P. control lines.
- E      Rotating Head with fill up outlet and extended Slooie line.
- 1,2,4,5, 8,10,11, 12      2" minimum 5000# W.P. flanged full opening steel gate valve, or Halliburton Lo Torc Plug valve.
- 3      2" minimum 5000# W.P. back pressure valve.
- 6,9      3" minimum 5000# W.P. flanged full opening steel gate valve, or Halliburton Lo Torc Plug valve.
- 7      3" minimum 5000# W.P. flanged hydraulic valve
- 15      3" minimum Schedule 160, Grade B, seamless line pipe
- 14      2" minimum x 3" 5000# W.P. flanged cross
- 13,14      2" minimum 5000# W.P. adjustable chokes with carbide trim.
- 17      Cameron Mud Gauge or equivalent (location in choke line optional).
- 14      6" minimum 1000# hydraulic flanged valve.
- 24      8" minimum steel flow line.
- 25      2" minimum 1000# W.P. flanged or threaded full opening steel gate valve, or Halliburton Lo Torc Plug valve.



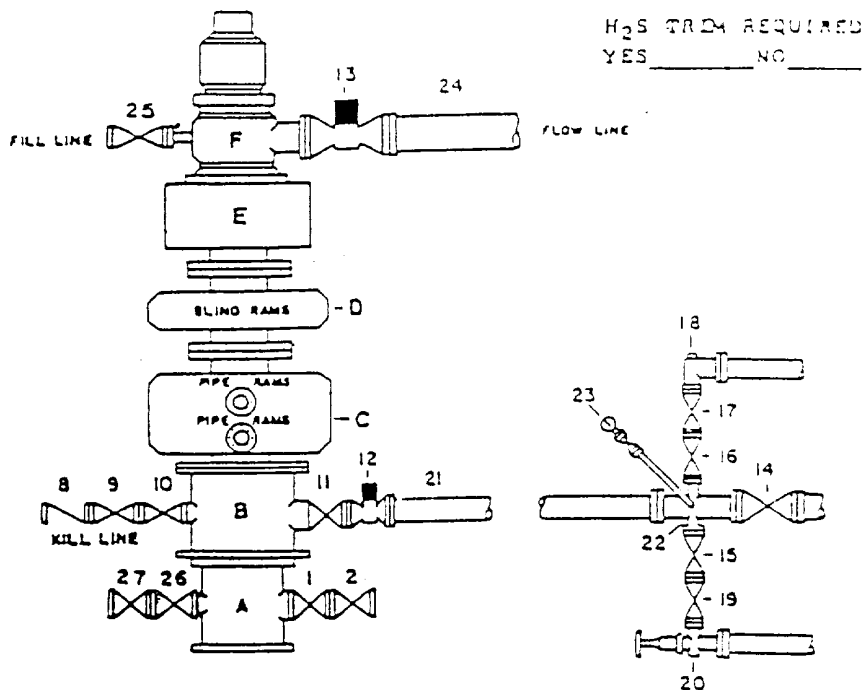
TEXACO, INC.  
HULLING STATION  
HULLING TEXAS



SCALE	DATE	EST NO	DRU NO
DRAWN BY			
CHECKED BY			
APPROVED BY			

EXHIBIT F-1

# DRILLING CONTROL CONDITION V-B - 10,000 PSI WP



H<sub>2</sub>S FROM REQUIRED  
YES \_\_\_\_\_ NO \_\_\_\_\_

## DRILLING CONTROL

### MATERIAL LIST - CONDITION V-B

- |                            |  |
|----------------------------|--|
| A                          | Texaco Wellhead  |
| B                          | 10,000 W.P. Drilling Spool with a minimum 1" flanged outlet for Kill line and 4" minimum flanged outlet for choke line |
| C                          | 10,000 W.P. Dual Variable Ram Type preventer, hydraulic operated with 1" steel, 10000 W.P. control line                |
| D                          | 10,000 W.P. Single Ram Type preventer, hydraulic operated with 1" steel, 10000 W.P. control lines                      |
| E                          | 10,000 W.P. Annular preventer, hydraulic operated with 1" steel, 10000 W.P. control lines                              |
| F                          | When required - Rotating Head with fill up outlet and extended choke line  |
| 1,2,9,10,13,14,17,19,24,27 | 2" minimum 10,000 W.P. flanged full opening steel gate valve, or Halliburton Lo Tarc Plug valve                        |
| 8                          | 2" minimum 10,000 W.P. back pressure valve   |
| 11,14                      | 4" minimum 10,000 W.P. flanged full opening steel gate valve   |
| 12                         | 4" minimum 10,000 W.P. flanged full opening hydraulic valve  |
| 13                         | When required - 10" minimum 10000 W.P. flanged full opening hydraulic valve  |
| 21                         | 4" minimum 10,000 W.P. 4130 mechanical tubing with flanged ends, or equivalent   |
| 22                         | 2" minimum X 4" minimum 10,000 W.P. flanged cross  |
| 18                         | 2" minimum 10,000 W.P. automatic choke   |
| 20                         | 2" minimum 10,000 W.P. adjustable choke equipped with carbide trim   |
| 23                         | Cameron Mud Gauge or equivalent (location in choke line optional)  |
| 24                         | When required - 10" steel flow line  |
| 25                         | 2" minimum 10000 W.P. flanged or threaded full opening steel gate valve or Halliburton Lo Tarc plug valve              |



TEXACO, INC.  
MIDLAND DIVISION  
MIDLAND, TEXAS



SCALE	DATE	EST. NO.	DRG. NO.
DRAWN BY			
CHECKED BY			
APPROVED BY			

EXHIBIT G-1



# NEW MEXICO ENERGY, MINERALS and NATURAL RESOURCES DEPARTMENT

GARY E. JOHNSON

Governor

Jennifer A. Salisbury

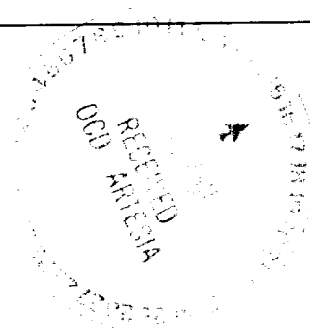
Cabinet Secretary

Lori Wrotenbery

Director

Oil Conservation Division

Bureau of Land Management  
620 East Green Street  
Carlsbad, NM 88220-6292  
Attn: Craig Cranston



**RE: APPLICATION FOR PERMIT TO DRILL IN POTASH AREA**

**OPERATOR:** Texaco Exploration and Production  
**LEASE NAME:** Cotton Draw Unit # 90  
**LOCATION:** SEC. 36, TOWNSHIP 24 SOUTH, RANGE 31 EAST,  
660' FNL & 660' FWL, Surface Location  
EDDY COUNTY, NM, NMPM

**PROPOSED DEPTH:** 11,500'

Dear Craig or To Whom It May Concern,

The application for permit to drill identified above has been filed with this office of the New Mexico Oil Conservation Division. Pursuit to the provisions of Oil Conservation Division Order R-111-P, please advise this office whether or not this application is within an established Life-of-Mine Reserve area filed with and approved by your office. If not, please advise whether it is within the buffer zone established by this order.

Thank you for your assistance.

Sincerely,

Bryan G. Arant

PES, District II Artesia NMOCD

In LMR

Yes \_\_\_\_\_

No ☒

In Buffer Zone

Yes \_\_\_\_\_

No ☒

Comments:

Signature: [Signature]

Date: 7-9-01



# NEW MEXICO ENERGY, MINERALS and NATURAL RESOURCES DEPARTMENT

GARY E. JOHNSON  
Governor  
Jennifer A. Salisbury  
Cabinet Secretary

Lori Wrotenbery  
Director  
Oil Conservation Division

New Mexico State Land Office  
PO Box 1148  
Santa Fe, MN 87405  
Attn: Joe Mraz or To Whom It May Concern



**RE: APPLICATION FOR PERMIT TO DRILL IN POTASH AREA**

**OPERATOR:** Texaco Exploration and Production  
**LEASE NAME:** Cotton Draw Unit # 90  
**LOCATION:** SEC. 36, TOWNSHIP 24 SOUTH, RANGE 31 EAST,  
660' FNL & 660' FWL, Surface Location  
EDDY COUNTY, NM, NMPM

**PROPOSED DEPTH:** 11,500'  
Dear Craig or To Whom It May Concern,

The application for permit to drill identified above has been filed with this office of the New Mexico Oil Conservation Division. Pursuit to the provisions of Oil Conservation Division Order R-111-P, please advise this office whether or not this application is within an established Life-of Mine Reserve area filed with and approved by your office. If not, please advise whether it is within the buffer zone established by this order.  
Thank you for your assistance.

Sincerely,

Bryan G. Arrant  
PES, District II Artesia NMOCD

In LMR	Yes _____	No <u>X</u>
In Buffer Zone	Yes _____	No <u>X</u>

J.R. mraz 7-12-01

Comments:

Signature: Date: 7/12/01