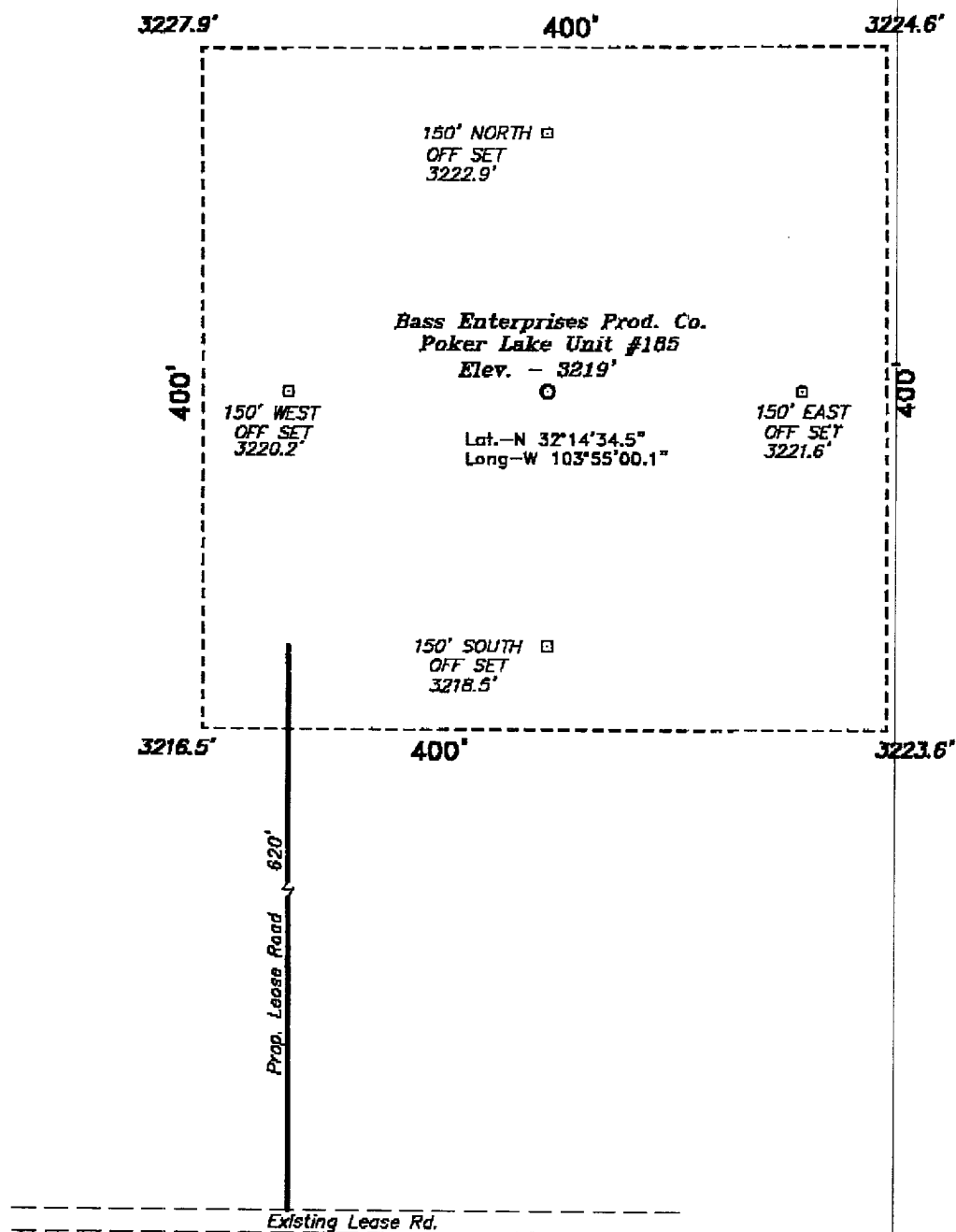
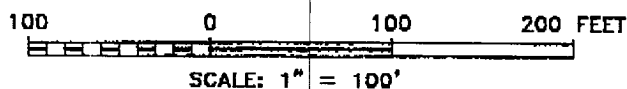


# SECTION 6, TOWNSHIP 24 SOUTH, RANGE 30 EAST, N.M.P.M., EDDY COUNTY, NEW MEXICO.



## DIRECTIONS TO LOCATION:

FROM THE JUNCTION OF STATE HWY 128 & CO. RD. 793, GO SOUTH AND WEST ON CO. RD. 793 APPROX. 4.0 MILES TO A LEASE ROAD; THENCE SOUTH ON LEASE ROAD APPROX. 3.5 MILES TO A PROPOSED LEASE ROAD.



**BASIN SURVEYS** P.O. BOX 1786—HOBBS, NEW MEXICO

W.O. Number: 1810

Drawn By: K. GOAD

Date: 08-28-2001

Disk: KJG CD#5 — 1810A.DWG

## BASS ENTERPRISES PRODUCTION CO.

REF: Poker Lake Unit No. 185 / Well Pad Topo

THE POKER LAKE UNIT No. 185 LOCATED 1310' FROM  
THE SOUTH LINE AND 1330' FROM THE EAST LINE OF  
SECTION 6, TOWNSHIP 24 SOUTH, RANGE 30 EAST,  
N.M.P.M., EDDY COUNTY, NEW MEXICO.

Survey Date: 08-23-2001

Sheet 1 of 1 Sheets