

DISTRICT I  
P. O. Box 1980, Hobbs, NM 88240

DISTRICT II  
P. O. Drawer DD, Artesia, NM 88210

DISTRICT III  
1000 Rio Brazos Rd., Aztec, NM 87410

DISTRICT IV  
P. O. Box 2088, Santa Fe, NM 87504-2088

State of New Mexico  
Energy, Minerals and Natural Resources Department

OIL CONSERVATION DIVISION  
PO Box 2088  
Santa Fe, NM 87504-2088

Form C-102  
Revised February 10, 1994

Instructions on back

Submit to Appropriate District Office

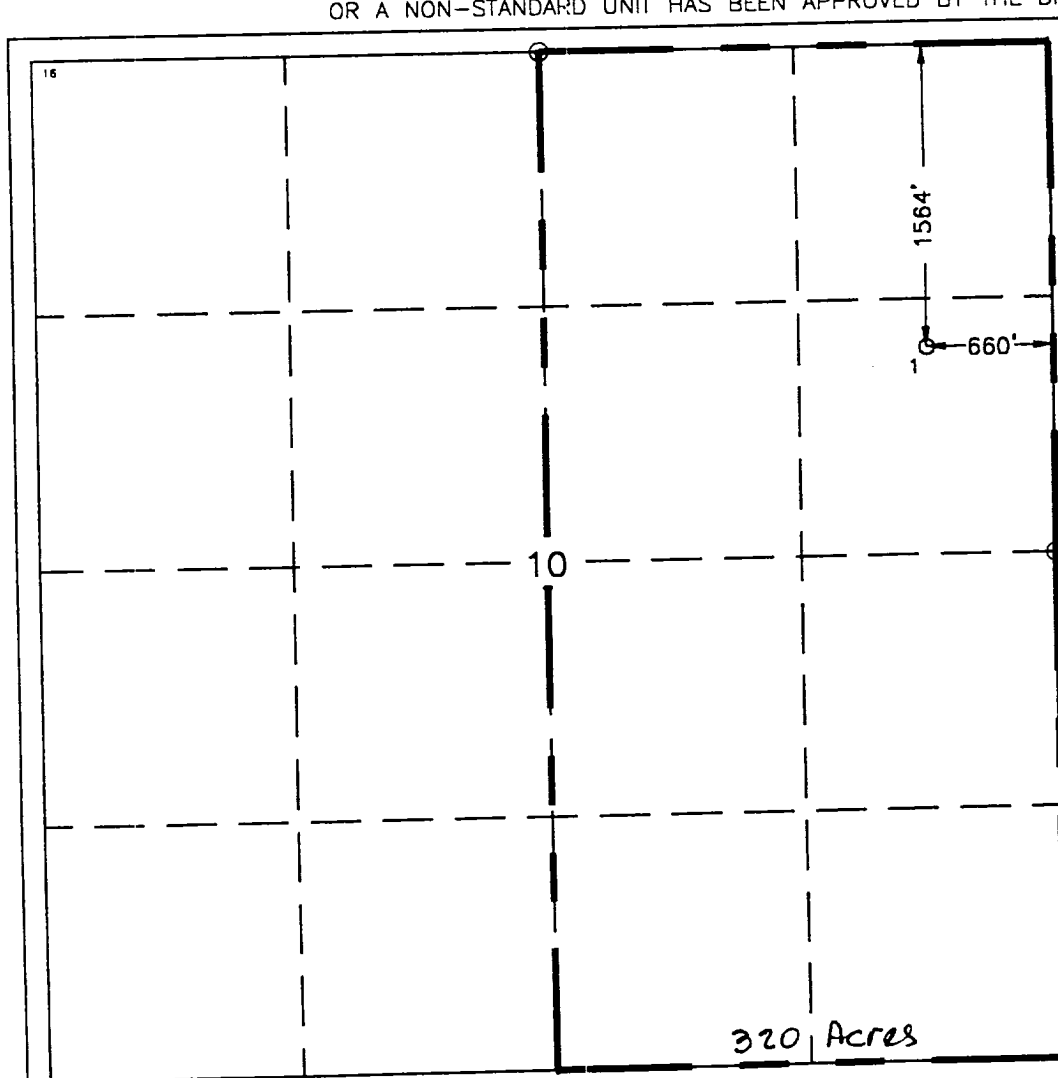
State Lease-4 copies  
Fee Lease-3 copies

☐ AMENDED REPORT

WELL LOCATION AND ACREAGE DEDICATION PLAT

<sup>1</sup> API Number		<sup>2</sup> Pool Code		<sup>3</sup> Pool Name Paduca South, Wolfcamp					
<sup>4</sup> Property Code		<sup>5</sup> Property Name Cotton Draw 10 Fed. Com						<sup>6</sup> Well Number 1	
<sup>7</sup> OGRID No. 22351		<sup>8</sup> Operator Name TEXACO EXPLORATION & PRODUCTION, INC.						<sup>9</sup> Elevation 3411'	
<sup>10</sup> Surface Location									
UL or lot no. H	Section 10	Township 25-S	Range 31-E	Lot Idn	Feet from the 1564'	North/South line North	Feet from the 660'	East/West line East	<sup>7</sup> County Eddy
<sup>11</sup> Bottom Hole Location if Different From Surface									
UL or lot no.	Section	Township	Range	Lot Idn	Feet from the	North/South line	Feet from the	East/West line	<sup>7</sup> County
<sup>12</sup> Dedicated Acres 320		<sup>13</sup> Joint or Infill		<sup>14</sup> Consolidation Code		<sup>15</sup> Order No.			

NO ALLOWABLE WILL BE ASSIGNED TO THIS COMPLETION UNTIL ALL INTERESTS HAVE BEEN CONSOLIDATED  
OR A NON-STANDARD UNIT HAS BEEN APPROVED BY THE DIVISION.



<sup>16</sup> OPERATOR CERTIFICATION  
I hereby certify that the information contained herein is true and complete to the best of my knowledge and belief.

Signature

*A. Phil Ryan*

Printed Name

A. Phil Ryan

Position

Commissioner Coordinator

Company

Texaco Expl. & Prod. Inc.

Date

April 18, 2001

<sup>17</sup> SURVEYOR CERTIFICATION

I hereby certify that the well location shown on this plat was plotted from field notes of actual surveys made by me or under my supervision, and that the same is true and correct to the best of my knowledge and belief.

Date Surveyed

April 16, 2001

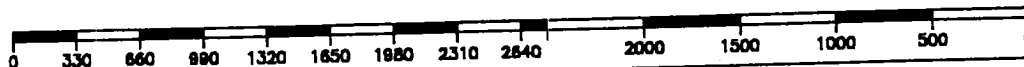
Signature & Seal of  
Professional Surveyor

*John S. Piper*

Certificate No.

7254 John S. Piper

Sheet 1 of 1



Water Supply Well = Plugged & Abandon Well