

DISTRICT I  
P.O. Box 1980, Hobbs, NM 88241-1980

DISTRICT II  
P.O. Drawer DD, Arizola, NM 88211-0719

DISTRICT III  
1000 Rio Brazos Rd., Aztec, NM 87410

DISTRICT IV  
P.O. Box 2088, Santa Fe, N.M. 87504-2088

OIL CONSERVATION DIVISION  
P.O. Box 2088  
Santa Fe, New Mexico 87504-2088

Form C-102  
Revised February 10, 1994  
Submit to Appropriate District Office  
State Lease - 4 Copies  
Fee Lease - 3 Copies

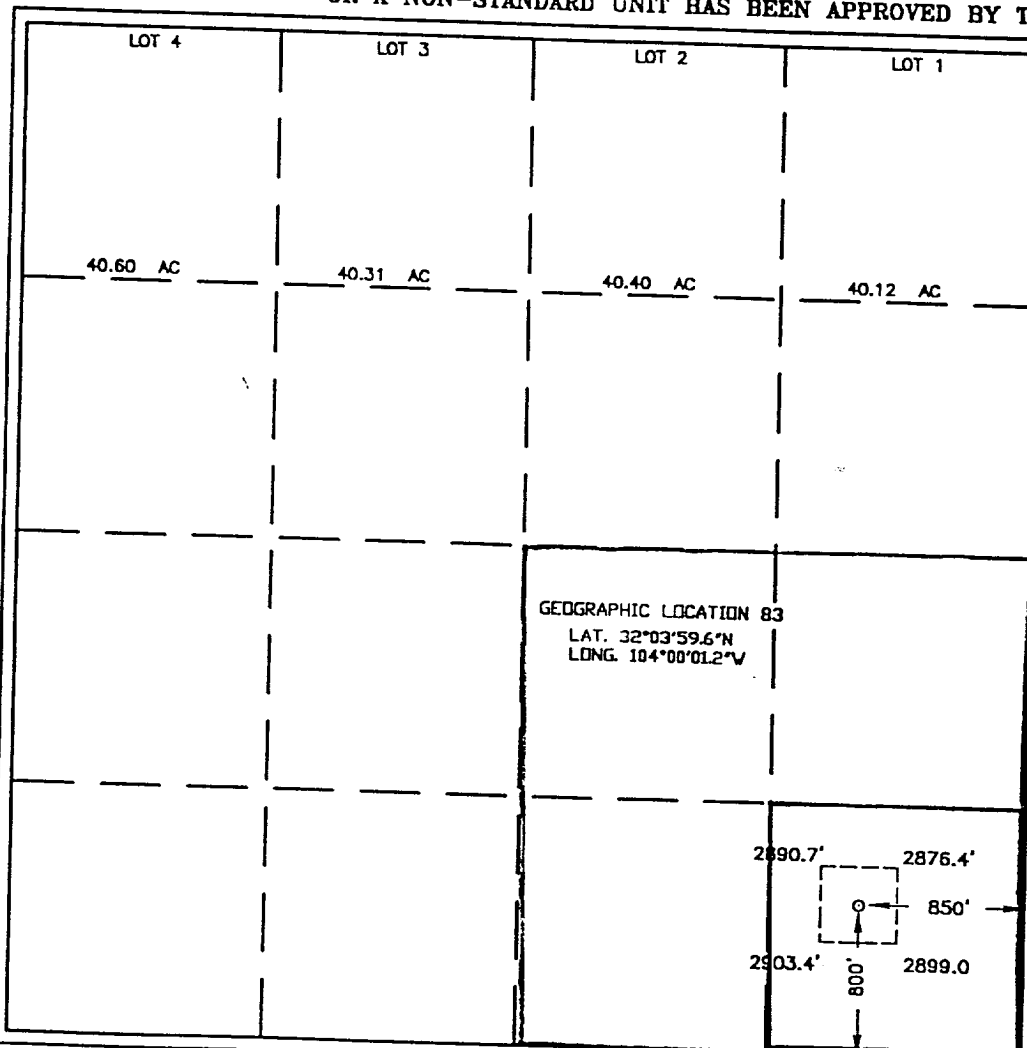
WELL LOCATION AND ACREAGE DEDICATION PLAT

API Number 30-015-31869	Pool Code	Pool Name Brushy Draw Delaware	<input type="checkbox"/> AMENDED REPORT
Property Code NM101108	Property Name WEST BRUSHY FEDERAL "5"		Well Number 5
OGRD No. 00996	Operator Name ARCO PERMIAN		Elevation 2884'

Surface Location									
UL or lot No. P	Section 5	Township 26-S	Range 29-E	Lot Idn	Feet from the 800	North/South line SOUTH	Feet from the 850	East/West line EAST	County EDDY

Bottom Hole Location If Different From Surface									
UL or lot No.	Section	Township	Range	Lot Idn	Feet from the	North/South line	Feet from the	East/West line	County
Dedicated Acres 40	Joint or Infill	Consolidation Code	Order No.						

NO ALLOWABLE WILL BE ASSIGNED TO THIS COMPLETION UNTIL ALL INTERESTS HAVE BEEN CONSOLIDATED  
OR A NON-STANDARD UNIT HAS BEEN APPROVED BY THE DIVISION



<b>OPERATOR CERTIFICATION</b>	
I hereby certify the the information contained herein is true and complete to the best of my knowledge and belief.	
Signature <i>Amy Spang</i>	
Printed Name Amy Spang	
Title Regulatory Comp. Analyst	
Date 11/28/01	
<b>SURVEYOR CERTIFICATION</b>	
I hereby certify that the well location shown on this plat was plotted from field notes of actual surveys made by me or under my supervision, and that the same is true and correct to the best of my belief.	
JUNE 14, 2001	
Date Surveyed	AWB
Signature & Seal of Professional Surveyor <i>Ronald J. Edson</i>	
Certificate No. RONALD J. EDSON 3239 GARY KIDSON 12641	