

State of New Mexico

Energy, Minerals and Natural Resources Department

DISTRICT I

P.O. Box 1922, Hobbs, NM 88241-1922

DISTRICT II

P.O. Drawer 80, Artesia, NM 88211-0719

DISTRICT III

1000 Rio Brazos Rd., Artec, NM 87410

DISTRICT IV

P.O. Box 2088, Santa Fe, N.M. 87504-2088

OIL CONSERVATION DIVISION

P.O. Box 2088

Santa Fe, New Mexico 87504-2088

Form C-102

Revised February 10, 1994

Submit to Appropriate District Office

State Lease - 4 Copies

Fee Lease - 3 Copies

WELL LOCATION AND ACREAGE DEDICATION PLAT

☐ AMENDED REPORT

API Number 30-05-3186	Pool Code 8080	Pool Name Brushy Draw Delaware
Property Code NM 101108	Property Name WEST BRUSHY '8' Federal	
OGRID No. 000990	Operator Name ARCO PERMIAN	Well Number 2
		Elevation 2922'

Surface Location

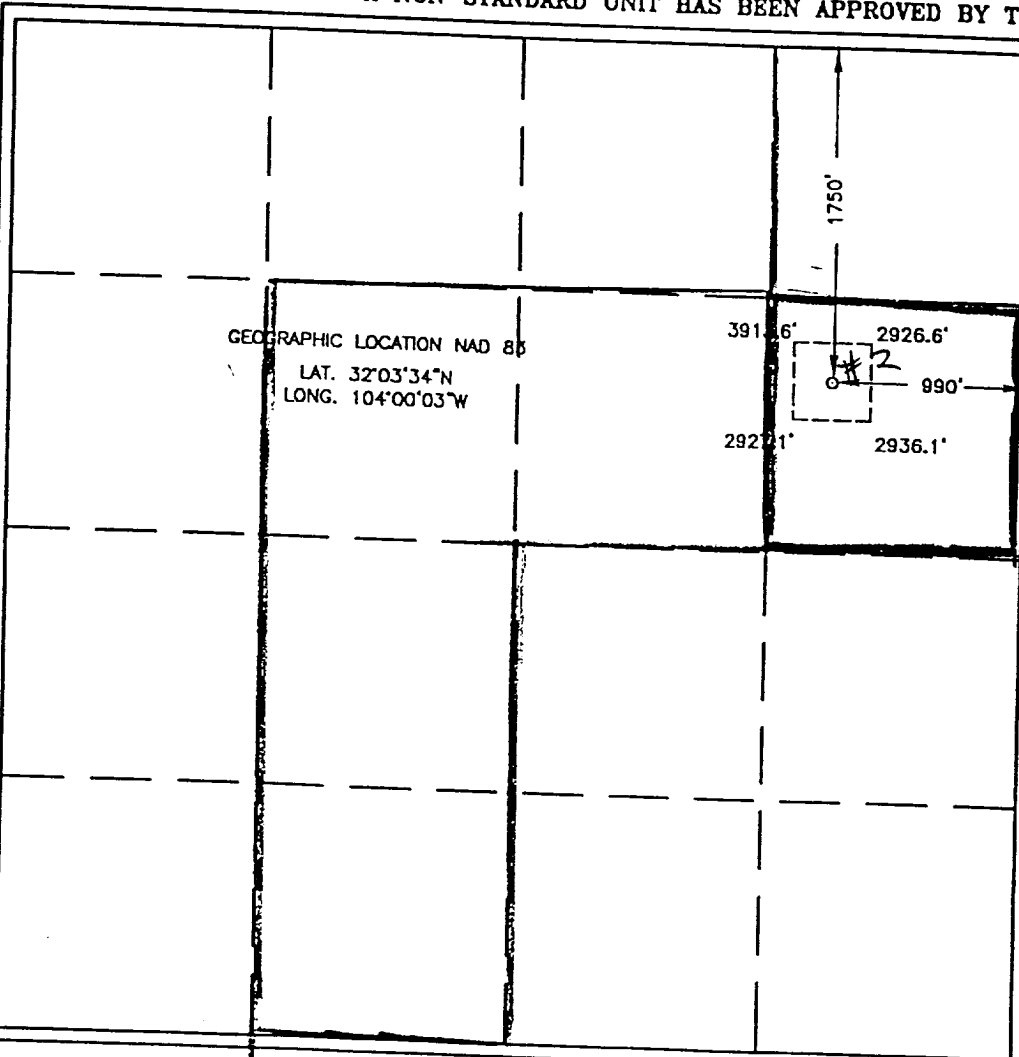
UL or lot No.	Section	Township	Range	Lot Idn	Feet from the	North/South line	Feet from the	East/West line	County
H	8	26-S	29-E		1750	NORTH	990	EAST	EDDY

Bottom Hole Location If Different From Surface

UL or lot No.	Section	Township	Range	Lot Idn	Feet from the	North/South line	Feet from the	East/West line	County

Dedicated Acres 40	Joint or Infill	Consolidation Code	Order No.
------------------------------	-----------------	--------------------	-----------

NO ALLOWABLE WILL BE ASSIGNED TO THIS COMPLETION UNTIL ALL INTERESTS HAVE BEEN CONSOLIDATED OR A NON-STANDARD UNIT HAS BEEN APPROVED BY THE DIVISION



OPERATOR CERTIFICATION

I hereby certify the the information contained herein is true and complete to the best of my knowledge and belief.

Amy Spang
Signature

Amy Spang
Printed Name

Reg. Analyst
Title

10/26/01
Date

SURVEYOR CERTIFICATION

I hereby certify that the well location shown on this plat was plotted from field notes of actual surveys made by me or under my supervision, and that the same is true and correct to the best of my belief.

JUNE 14, 2001

Date Surveyed **AWB**

Signature **AWB**
Professional Surveyor

RONALD J. ELDSON
6/18/01
01-11-0726

Certificate No. **RONALD J. ELDSON 3239**
GARY KIDSON 12641