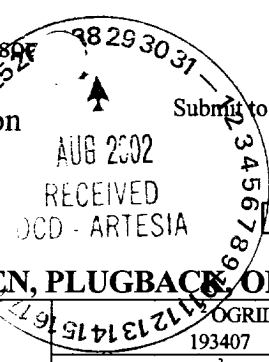


District I
1625 N. French Dr., Hobbs, NM 88240
District II
815 South First, Artesia, NM 88210
District III
1000 Rio Brazos Road, Aztec, NM 87410
District IV
2040 South Pacheco, Santa Fe, NM 87505

State of New Mexico
Energy Minerals and Natural Resources
Oil Conservation Division
2040 South Pacheco
Santa Fe, NM 87505



Form C-101
Revised March 17, 1999
Submit to appropriate District Office
State Lease - 6 Copies
Fee Lease - 3 Copies
 AMENDED REPORT

APPLICATION FOR PERMIT TO DRILL, RE-ENTER, DEEPEN, PLUGBACK, OR ADD A ZONE

¹ Operator Name and Address CONCHO OIL & GAS CORP. 110 W. LOUISIAN STE 410 MIDLAND, TX 79701		² OGRID Number 193407
³ Property Code 30474		³ API Number 30 - 015 - 32416
⁵ Property Name Todd '2' State		⁶ Well No. 12

⁷ Surface Location

UL or lot no.	Section	Township	Range	Lot Idn	Feet from the	North/South line	Feet from the	East/West line	County
K	2	24S	31E		1980	SOUTH	1980	WEST	Eddy

⁸ Proposed Bottom Hole Location If Different From Surface

UL or lot no.	Section	Township	Range	Lot Idn	Feet from the	North/South line	Feet from the	East/West line	County
⁹ Proposed Pool 1 Ingle Wells, Delaware					¹⁰ Proposed Pool 2				

¹¹ Work Type Code N	¹² Well Type Code O	¹³ Cable/Rotary R	¹⁴ Lease Type Code S	¹⁵ Ground Level Elevation 3526'
¹⁶ Multiple No	¹⁷ Proposed Depth 8,500	¹⁸ Formation Delaware	¹⁹ Contractor Unknown	²⁰ Spud Date 9-20-02

²¹ Proposed Casing and Cement Program

Hole Size	Casing Size	Casing weight/foot	Setting Depth	Sacks of Cement	Estimated TOC
17-1/2"	13-3/8"	48#	675'	600 sx	SURF
11"	8-5/8"	32#	4300'	1100 sx	SURF
7-7/8"	5-1/2"	17#	8500'	1000 sx	4000

²² Describe the proposed program. If this application is to DEEPEN or PLUG BACK, give the data on the present productive zone and proposed new productive zone. Describe the blowout prevention program, if any. Use additional sheets if necessary.

- Drill 17-1/2" hole to 675'. Run & set 675' of 13-3/8" 48# H-40 casing. Cmt w/ 600 sx Cl C w/ additives.
- Drill 11" hole to 4300'. Run & set 4300' of 8-5/8" 32# J-55 casing. Cmt w/ 700 sx light cmt. Tailed in w/ 400 sx Cl C w/ additives.
- Drill 7-7/8" hole to 8500'. Run & set 8500' of 8-5/8" 17# casing as follows: 8000' of J-55 then 500' of N-80 Cmt w/ 700 sx Cl H light & 300 sx Cl H w/ additives.

²³ I hereby certify that the information given above is true and complete to the best of my knowledge and belief. Signature: <i>Greg Wilkes</i>		OIL CONSERVATION DIVISION	
Printed name: Greg Wilkes		Approved by: ORIGINAL SIGNED BY TIM W. GUM DISTRICT II SUPERVISOR	
Title: Sr. Op. Engineer		Title:	
Date: 8/27/02		Approval Date: AUG 29 2002	Expiration Date: AUG 29 2003
Phone: (915) 683-7443		Conditions of Approval:	
		Attached <input type="checkbox"/>	

DISTRICT I
1625 N. French Dr., Hobbs, NM 88240

DISTRICT II
811 South First, Artesia, NM 88210

DISTRICT III
1000 Rio Brazos Rd., Aztec, NM 87410

DISTRICT IV
2040 South Pacheco, Santa Fe, NM 87505

State of New Mexico
Energy, Minerals and Natural Resources Department

Form C-102
Revised March 17, 1999

Submit to Appropriate District Office
State Lease - 4 Copies
Fee Lease - 3 Copies

OIL CONSERVATION DIVISION

2040 South Pacheco
Santa Fe, New Mexico 87505

AMENDED REPORT

WELL LOCATION AND ACREAGE DEDICATION PLAT

API Number	Pool Code	Pool Name Ingle Wells, Delaware
Property Code	Property Name TODD "2" STATE	Well Number 12
OGRID No. 193407	Operator Name CONCHO OIL & GAS CORP.	Elevation 3481'

Surface Location

UL or lot No.	Section	Township	Range	Lot Idn	Feet from the	North/South line	Feet from the	East/West line	County
K	2	24 S	31 E		1980	SOUTH	1980	WEST	EDDY

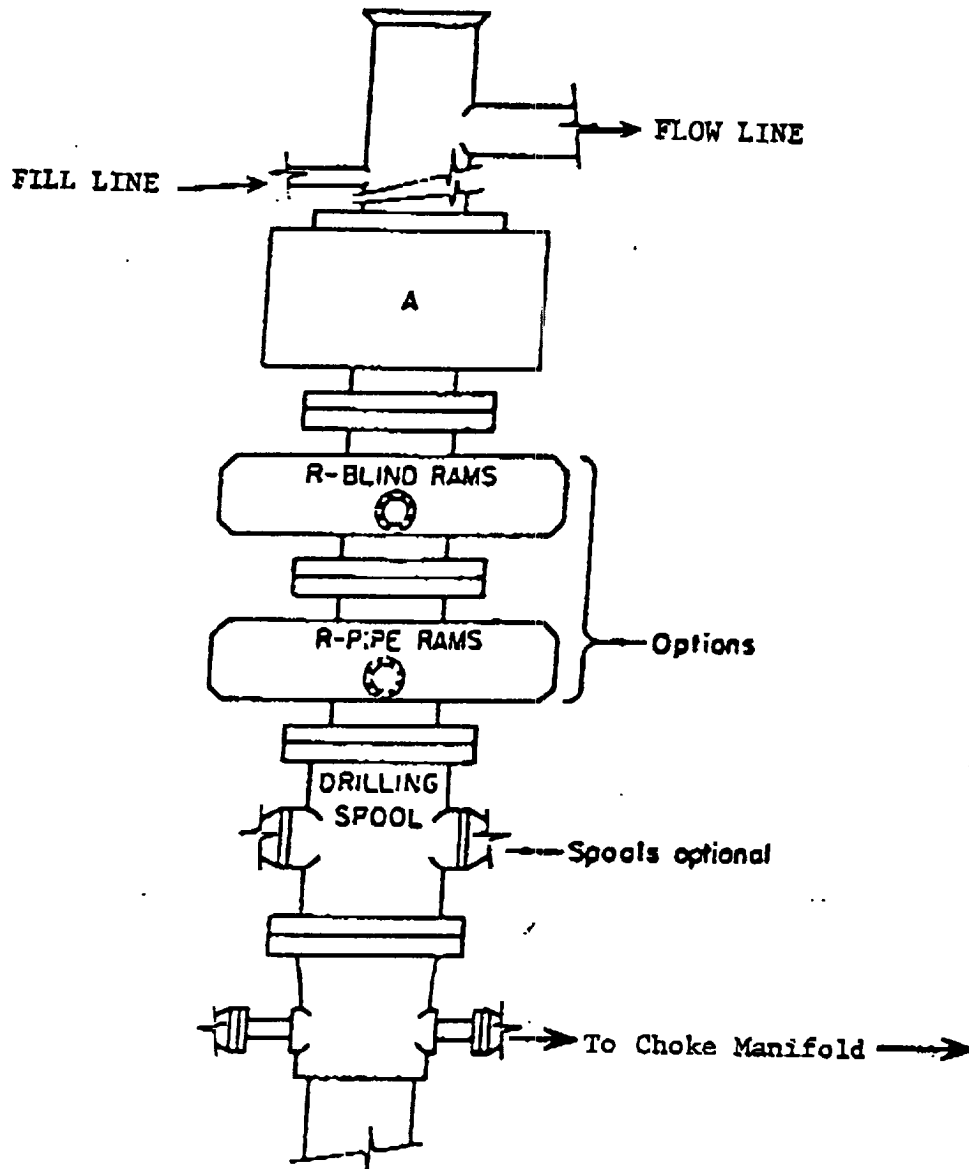
Bottom Hole Location If Different From Surface

UL or lot No.	Section	Township	Range	Lot Idn	Feet from the	North/South line	Feet from the	East/West line	County

Dedicated Acres	Joint or Infill	Consolidation Code	Order No.

NO ALLOWABLE WILL BE ASSIGNED TO THIS COMPLETION UNTIL ALL INTERESTS HAVE BEEN CONSOLIDATED OR A NON-STANDARD UNIT HAS BEEN APPROVED BY THE DIVISION

LOT 4 - 39.99 AC.	LOT 3 - 39.98 AC.	LOT 2 - 39.96 AC.	LOT 1 - 39.95 AC.	<p>OPERATOR CERTIFICATION</p> <p>I hereby certify the the information contained herein is true and complete to the best of my knowledge and belief.</p> <p><i>Phyllis A. Edwards</i> Signature</p> <p>Phyllis A. Edwards Printed Name</p> <p>Operations Secretary Title</p> <p>8/27/02 Date</p>
<p>LAT-N32°14'40.5" LONG-W103°45'02.7"</p>				<p>SURVEYOR CERTIFICATION</p> <p>I hereby certify that the well location shown on this plat was plotted from field notes of actual surveys made by me or under my supervision and that the same is true and correct to the best of my belief.</p> <p>AUGUST 7, 2002 Date Surveyed</p> <p><i>Gary L. Jones</i> Signature & Seal of Professional Surveyor</p> <p>W.O. No. 2678A</p> <p>Certificate No. Gary L. Jones 7977</p> <p>BASIN SURVEYS</p>



ARRANGEMENT SRRA

5000 PSI

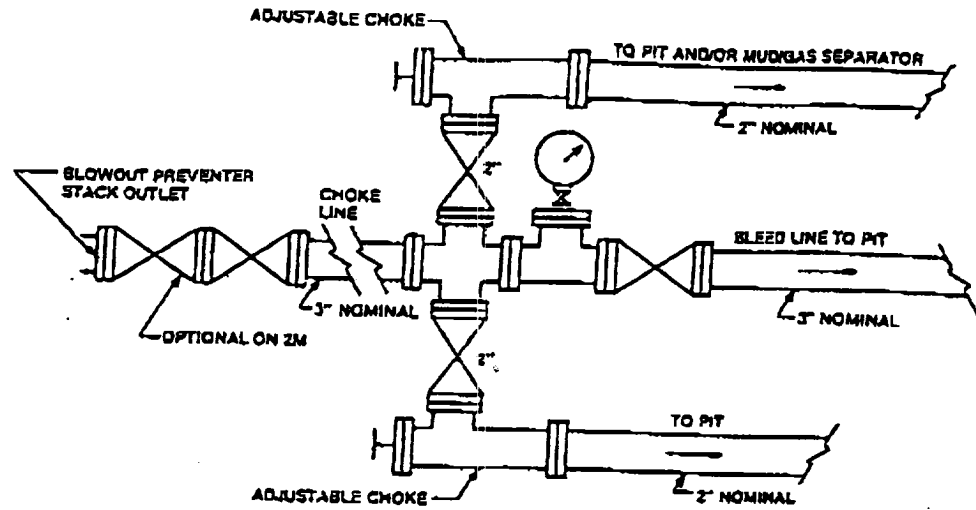


FIGURE K4-1. Typical choke manifold assembly for 2M and 3M rated working pressure service — surface installation.

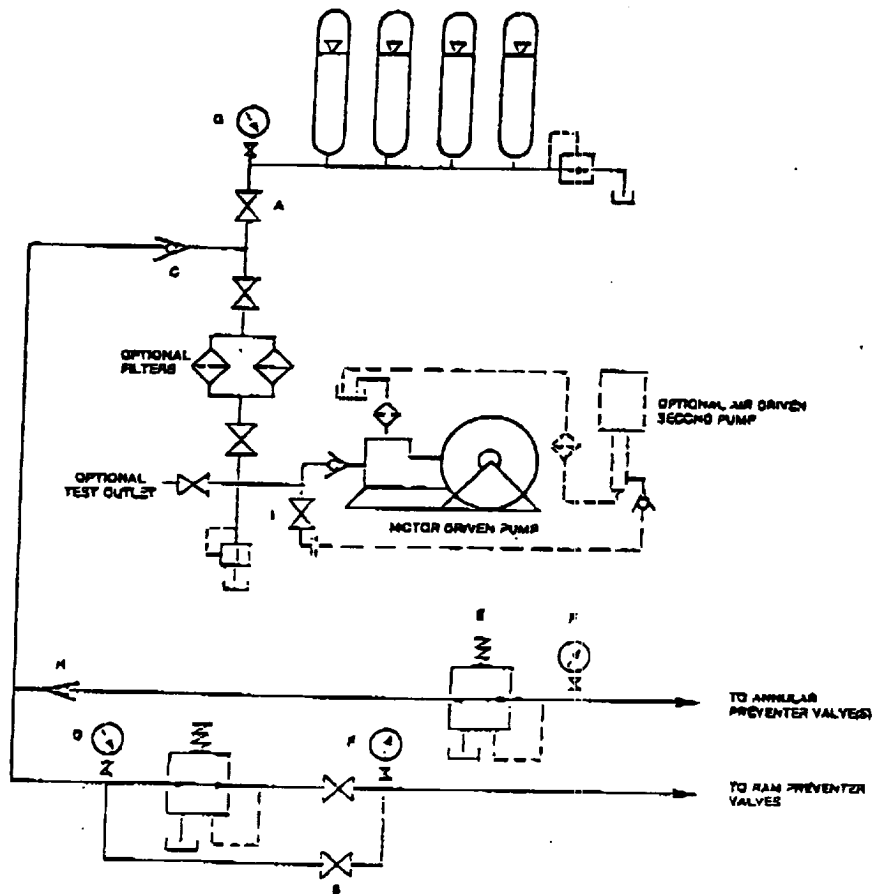


FIGURE K6-1. The schematic sketch of an accumulator system shows required and optional components.