

1625 N. French Dr., Hobbs, NM 88240
District II
811 South First, Artesia, NM 88210
District III
1000 Rio Brazos Road, Aztec, NM 87410
District IV
2040 South Pacheco, Santa Fe, NM 87505

Energy Minerals and Natural Resources

Oil Conservation Division
2040 South Pacheco
Santa Fe, NM 87505

Form C-101
Revised March 17, 1999
Submit to appropriate District Office
State Lease - 6 Copies
Fee Lease - 5 Copies
☐ AMENDED REPORT

APPLICATION FOR PERMIT TO DRILL, RE-ENTER, DEEPEN, PLUG BACK, OR ADD A ZONE

¹ Operator Name and Address CONCHO OIL & GAS CORP. 110 W. LOUISIAN STE 410 MIDLAND, TX 79701		² OGRID Number 193407
³ Property Code 30475		³ API Number 30 - 015- 32417
⁵ Property Name Cactus '16' State		⁶ Well No. 3

⁷ Surface Location

UL or lot no.	Section	Township	Range	Lot Idn	Feet from the	North/South line	Feet from the	East/West line	County
D	16	24S	31E		660	NORTH	660	WEST	Eddy

⁸ Proposed Bottom Hole Location If Different From Surface

UL or lot no.	Section	Township	Range	Lot Idn	Feet from the	North/South line	Feet from the	East/West line	County
⁹ Proposed Pool 1 Poker Lake, Delaware					¹⁰ Proposed Pool 2				

¹¹ Work Type Code N	¹² Well Type Code O	¹³ Cable/Rotary R	¹⁴ Lease Type Code S	¹⁵ Ground Level Elevation 3526'
¹⁶ Multiple No	¹⁷ Proposed Depth 8,500	¹⁸ Formation Delaware	¹⁹ Contractor Unknown	²⁰ Spud Date 9-20-02

²¹ Proposed Casing and Cement Program

Hole Size	Casing Size	Casing weight/foot	Setting Depth	Sacks of Cement	Estimated TOC
17-1/2"	13-3/8"	48#	675'	600 sx	SURF
11"	8-5/8"	32#	4300'	1100 sx	SURF
7-7/8"	5-1/2"	17#	8500'	1000 sx	4000

22 Describe the proposed program. If this application is to DEEPEN or PLUG BACK, give the data on the present productive zone and proposed new productive zone.
Describe the blowout prevention program, if any. Use additional sheets if necessary.

Concho Oil & Gas Corp. respectfully requests approval to drill the Cactus '16' State No. 3 well according to the following procedure:

1. Drill 17-1/2" hole to 675'. Run & set 675' of 13-3/8" 48# H-40 casing. Cmt w/ 600 sx Cl C w/ additives.
2. Drill 11" hole to 4300'. Run & set 4300' of 8-5/8" 32# J-55 casing. Cmt w/ 700 sx light cmt. Tailed in w/ 400 sx Cl C w/ additives.
3. Drill 7-7/8" hole to 8500'. Run & set 8500' of 8-5/8" 17# casing as follows: 8000' of J-55 then 500' of N-80 Cmt w/ 700 sx Cl H light & 300 sx Cl H w/ additives.

²³ I hereby certify that the information given above is true and complete to the best of my knowledge and belief.

Signature:

Printed name: Greg Wilkes

Title: Sr. Op. Engineer

Date: 8/27/02

Phone: (915) 683-7443

OIL CONSERVATION DIVISION
ORIGINAL SIGNED BY TIM W. GUM
DISTRICT II SUPERVISOR

Approved by:

Title:

Approval Date:

AUG 29 2002

Expiration Date:

AUG 29 2003

Conditions of Approval:

Attached ☐

DISTRICT I
1625 N. French Dr., Hobbs, NM 88240

DISTRICT II
811 South First, Artesia, NM 88210

DISTRICT III
1000 Rio Brazos Rd., Aztec, NM 87410

DISTRICT IV
2040 South Pacheco, Santa Fe, NM 87505

State of New Mexico
Energy, Minerals and Natural Resources Department

Form C-102
Revised March 17, 1999

Submit to Appropriate District Office
State Lease - 4 Copies
Fee Lease - 3 Copies

OIL CONSERVATION DIVISION

2040 South Pacheco
Santa Fe, New Mexico 87505

☐ AMENDED REPORT

WELL LOCATION AND ACREAGE DEDICATION PLAT

API Number	Pool Code	Pool Name Poker Lake, Delaware
Property Code	Property Name CACTUS "16" STATE	Well Number 3
OGRID No. 193407	Operator Name CONCHO OIL & GAS CORP.	Elevation 3526'

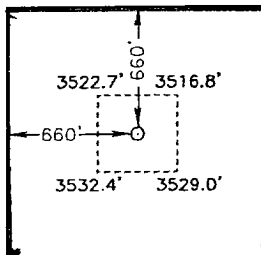

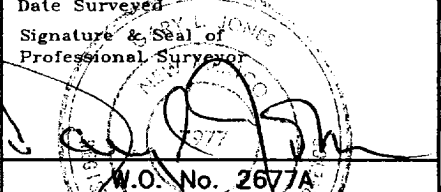
Surface Location

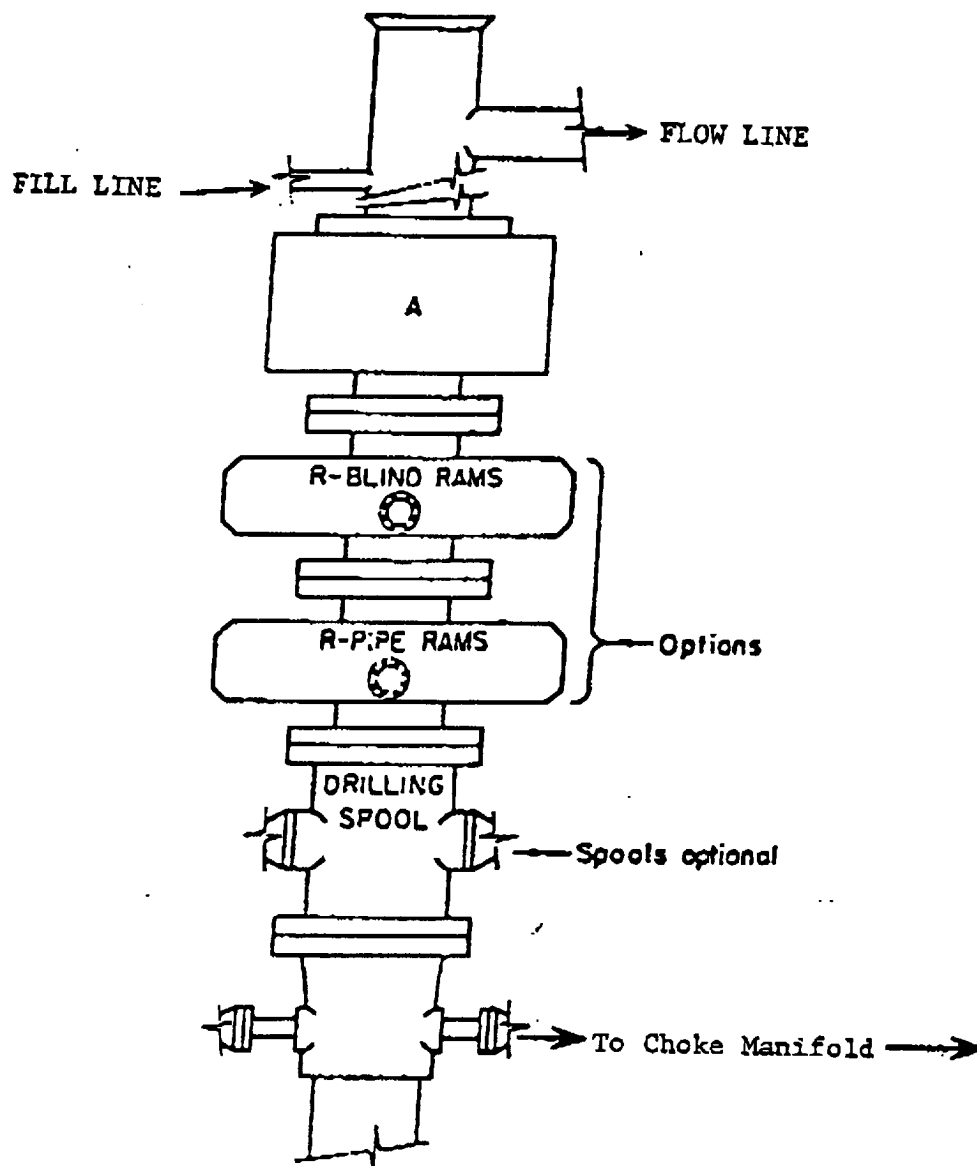
UL or lot No. D	Section 16	Township 24 S	Range 31 E	Lot Idn	Feet from the 660	North/South line NORTH	Feet from the 660	East/West line WEST	County EDDY
--------------------	---------------	------------------	---------------	---------	----------------------	---------------------------	----------------------	------------------------	----------------

Bottom Hole Location If Different From Surface

UL or lot No.	Section	Township	Range	Lot Idn	Feet from the	North/South line	Feet from the	East/West line	County
Dedicated Acres		Joint or Infill		Consolidation Code		Order No.			

NO ALLOWABLE WILL BE ASSIGNED TO THIS COMPLETION UNTIL ALL INTERESTS HAVE BEEN CONSOLIDATED
OR A NON-STANDARD UNIT HAS BEEN APPROVED BY THE DIVISION

			
OPERATOR CERTIFICATION			
I hereby certify the the information contained herein is true and complete to the best of my knowledge and belief.			
 Signature			
Phyllis A. Edwards Printed Name			
Operations Secretary Title			
8/27/02 Date			
SURVEYOR CERTIFICATION			
I hereby certify that the well location shown on this plat was plotted from field notes of actual surveys made by me or under my supervision and that the same is true and correct to the best of my belief.			
AUGUST 7, 2002			
Date Surveyed			
 Signature & Seal of Professional Surveyor			
W.O. No. 2677A			
Certificate No. Gary L. Jones 7977			
BASIN SURVEYS			



ARRANGEMENT SRRA

5000 PSI

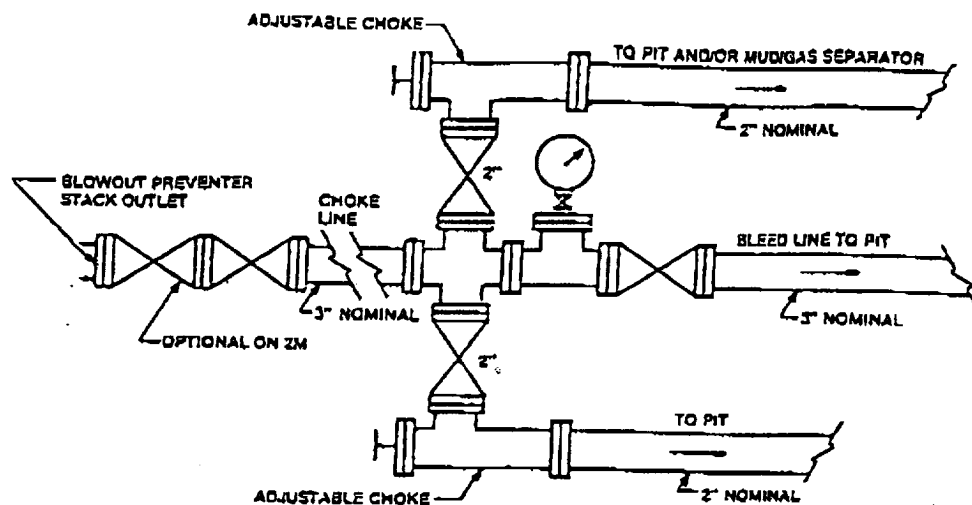


FIGURE K4-1. Typical choke manifold assembly for 2M and 3M rated working pressure service — surface installation.

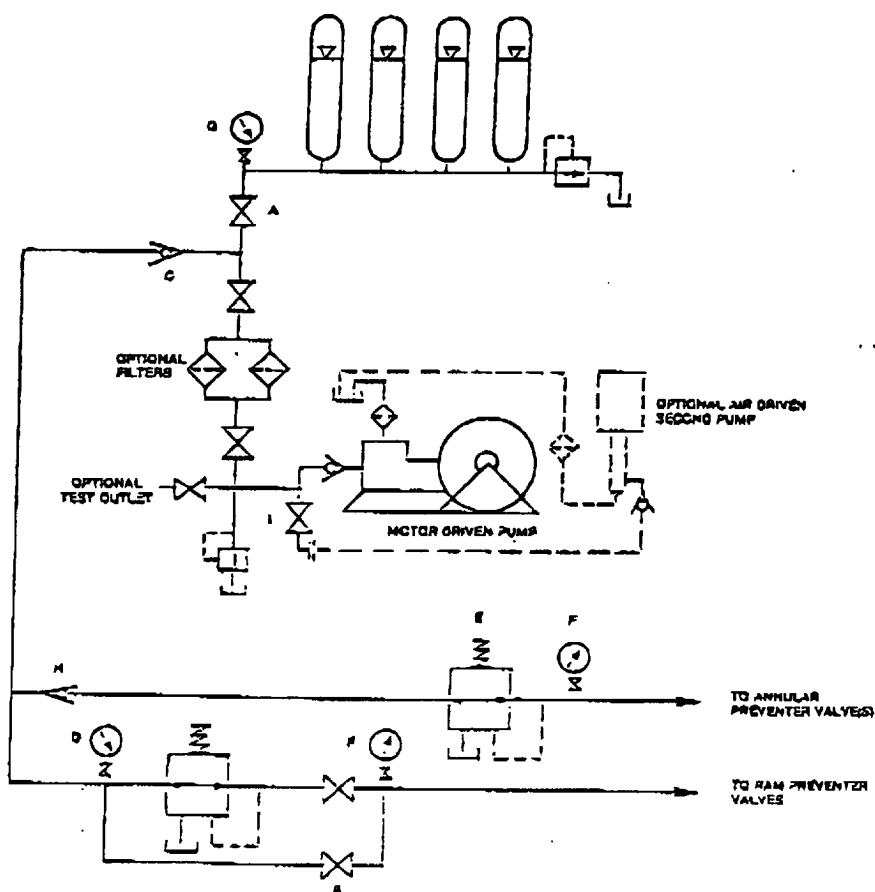


FIGURE K6-1. The schematic sketch of an accumulator system shows required and optional components.