

District I
1625 N. French Dr., Hobbs, NM 88240
District II
811 South First, Artesia, NM 88210
District III
1000 Rio Brazos Road, Aztec, NM 87410
District IV
2040 South Pacheco, Santa Fe, NM 87505

State of New Mexico
Energy Minerals and Natural Resou.

Form C-101
Revised March 17, 1999

Oil Conservation Division
2040 South Pacheco
Santa Fe, NM 87505

Submit to appropriate District Office
State Lease - 6 Copies
Fee Lease - 5 Copies

☐ AMENDED REPORT

APPLICATION FOR PERMIT TO DRILL, RE-ENTER, DEEPEN, PLUGBACK, OR ADD A ZONE

¹ Operator Name and Address CONCHO OIL FIELD 110 W. LOUISIAN STE 410 MIDLAND, TX 79701		² OGRID Number 193407
³ Property Code 30474		³ API Number 30 - 015 - 32500
⁵ Property Name Todd '2' State		⁶ Well No. 13

⁷ Surface Location

UL or lot no.	Section	Township	Range	Lot Idn	Feet from the	North/South line	Feet from the	East/West line	County
Lot 1	2	24S	31E		660	NORTH	660	East	Eddy

⁸ Proposed Bottom Hole Location If Different From Surface

UL or lot no.	Section	Township	Range	Lot Idn	Feet from the	North/South line	Feet from the	East/West line	County
⁹ Proposed Pool 1 Ingle Wells, Delaware					¹⁰ Proposed Pool 2				

¹¹ Work Type Code N	¹² Well Type Code O	¹³ Cable/Rotary R	¹⁴ Lease Type Code S	¹⁵ Ground Level Elevation 3526'
¹⁶ Multiple No	¹⁷ Proposed Depth 8,500	¹⁸ Formation Delaware	¹⁹ Contractor Unknown	²⁰ Spud Date Upon Approval

²¹ Proposed Casing and Cement Program

Hole Size	Casing Size	Casing weight/foot	Setting Depth	Sacks of Cement	Estimated TOC
17-1/2"	13-3/8"	48#	675'	600 sx	SURF
11"	8-5/8"	32#	4300'	1100 sx	SURF
7-7/8"	5-1/2"	17#	8500'	1000 sx	4000

22 Describe the proposed program. If this application is to DEEPEN or PLUG BACK, give the data on the present productive zone and proposed new productive zone. Describe the blowout prevention program, if any. Use additional sheets if necessary.

- Drill 17-1/2" hole to 675'. Run & set 675' of 13-3/8" 48# H-40 casing. Cmt w/ 600 sx Cl C w/ additives.
- Drill 11" hole to 4300'. Run & set 4300' of 8-5/8" 32# J-55 casing. Cmt w/ 700 sx light cmt. Tailed in w/ 400 sx Cl C w/ additives.
- Drill 7-7/8" hole to 8500'. Run & set 8500' of 8-5/8" 17# casing as follows: 8000' of J-55 then 500' of N-80 Cmt w/ 700 sx Cl H light & 300 sx Cl H w/ additives.

²³ I hereby certify that the information given above is true and complete to the best of my knowledge and belief.

Signature: *Kim Stewart*

Printed name: Kim Stewart

Title: Regulatory Analyst

Date: 10/25/02

Phone: (915) 683-7443

OIL CONSERVATION DIVISION

Approved by: **ORIGINAL SIGNED BY TIM W. GUM**
DISTRICT II SUPERVISOR

Title:

Approval Date:

Expiration Date:

Conditions of Approval:

Attached ☐

DISTRICT I
1625 N. French Dr., Hobbs, NM 88240

DISTRICT II
811 South First, Artesia, NM 88210

DISTRICT III
1000 Rio Brazos Rd., Aztec, NM 87410

DISTRICT IV
2040 South Pacheco, Santa Fe, NM 87505

State of New Mexico
Energy, Minerals and Natural Resources Department

Form C-102
Revised March 17, 1999

Submit to Appropriate District Office
State Lease - 4 Copies
Fee Lease - 3 Copies

OIL CONSERVATION DIVISION

2040 South Pacheco
Santa Fe, New Mexico 87505

☐ AMENDED REPORT

WELL LOCATION AND ACREAGE DEDICATION PLAT

API Number	Pool Code	Pool Name
		Ingle Wells; Delaware
Property Code	Property Name	Well Number
	TODD STATE	13
OGRID No.	Operator Name	Elevation
193407	RICKS EXPLORATION INC.	3515'

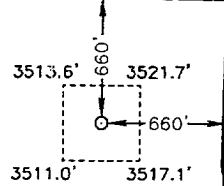
Surface Location

UL or lot No.	Section	Township	Range	Lot Idn	Feet from the	North/South line	Feet from the	East/West line	County
LOT 1	2	24 S	31 E		660	NORTH	660	EAST	EDDY

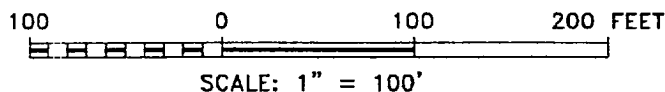
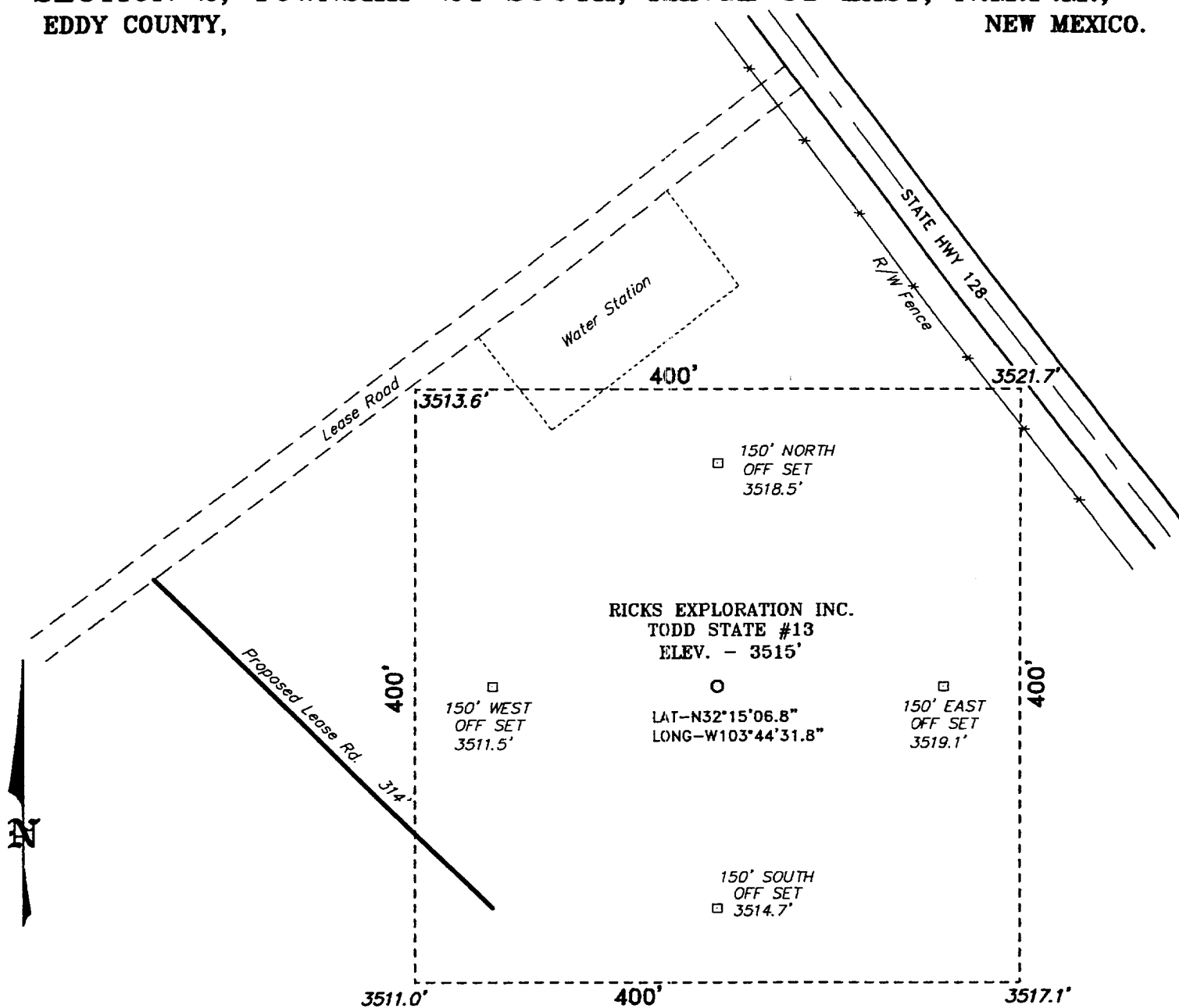
Bottom Hole Location If Different From Surface

UL or lot No.	Section	Township	Range	Lot Idn	Feet from the	North/South line	Feet from the	East/West line	County
Dedicated Acres	Joint or Infill	Consolidation Code	Order No.						
40									

NO ALLOWABLE WILL BE ASSIGNED TO THIS COMPLETION UNTIL ALL INTERESTS HAVE BEEN CONSOLIDATED
OR A NON-STANDARD UNIT HAS BEEN APPROVED BY THE DIVISION

LOT 4 - 39.99 AC.	LOT 3 - 39.98 AC.	LOT 2 - 39.96 AC.	LOT 1 - 39.95 AC.
		LAT-N32°15'06.8" LONG-W103°44'31.8"	
			
OPERATOR CERTIFICATION			
I hereby certify the the information contained herein is true and complete to the best of my knowledge and belief.			
Kim Stewart Signature			
Kim Stewart Printed Name			
Regulatory Analyst Title			
10/25/02 Date			
SURVEYOR CERTIFICATION			
I hereby certify that the well location shown on this plat was plotted from field notes of actual surveys made by me or under my supervision and that the same is true and correct to the best of my belief.			
OCTOBER 21, 2002			
Date Surveyed			
Signature & Seal of Professional Surveyor			
W.O. No. 2808A			
Certificate No. Gary L. Jones 7977			
BASIN SURVEYS			

SECTION 2, TOWNSHIP 24 SOUTH, RANGE 31 EAST, N.M.P.M.,
EDDY COUNTY, NEW MEXICO.



DIRECTIONS TO LOCATION:

FROM THE JUNCTION OF STATE HWY 128 AND CO. RD.
C-29, GO NORTHWEST ON HWY 128 FOR 0.1 MILE TO LEASE
ROAD; THENCE SOUTHWEST ON LEASE ROAD FOR 0.1 MILE
TO PROPOSED LEASE ROAD.

RICKS EXPLORATION INC.

REF: TODD STATE No. 13 / Well Pad Topo

THE TODD STATE No. 13 LOCATED 660' FROM
THE NORTH LINE AND 660' FROM THE EAST LINE OF
SECTION 2, TOWNSHIP 24 SOUTH, RANGE 31 EAST,
N.M.P.M., EDDY COUNTY, NEW MEXICO.

BASIN SURVEYS P.O. BOX 1786 - HOBBS, NEW MEXICO

W.O. Number: 2808

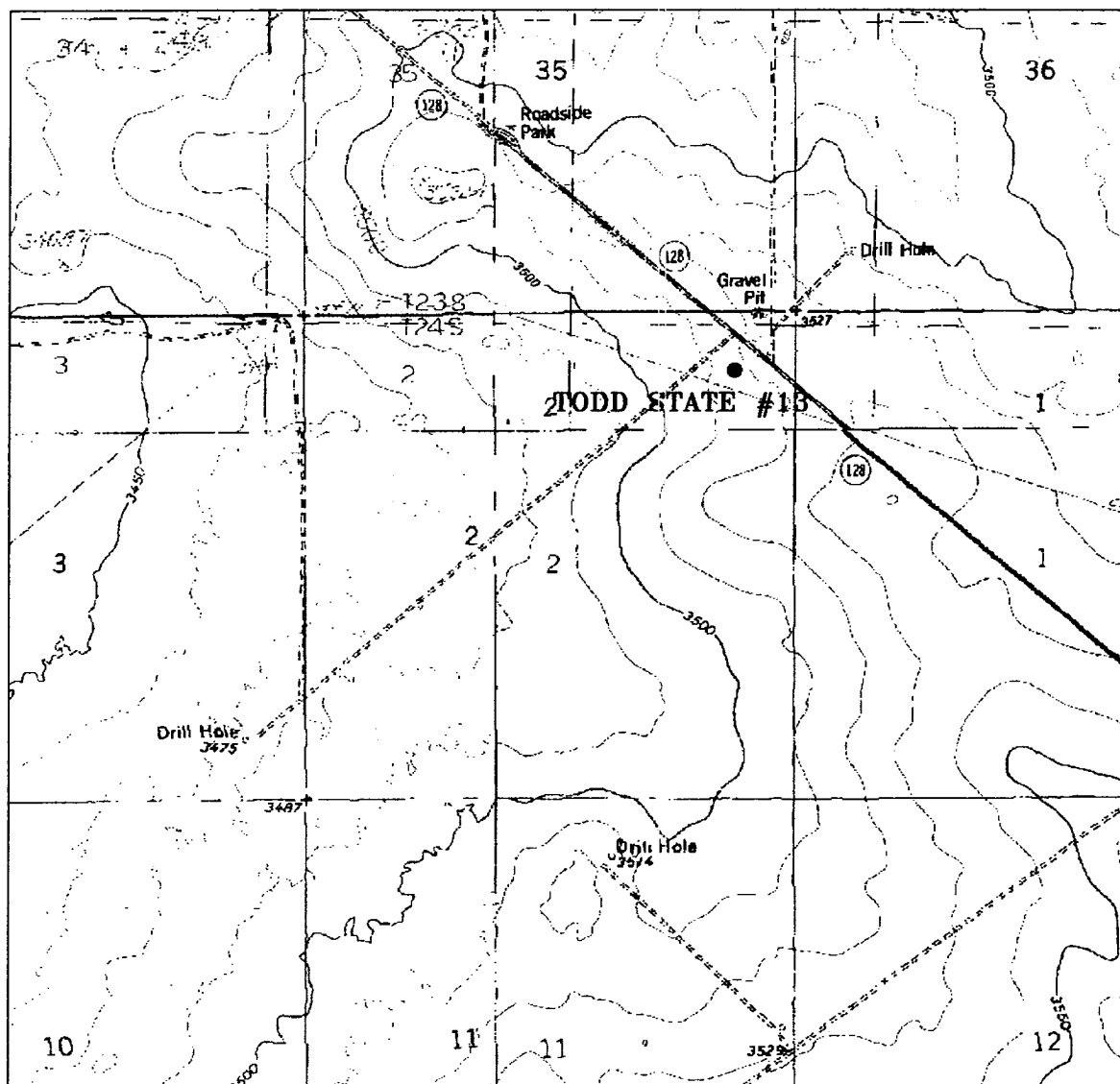
Drawn By: K. GOAD

Date: 10-22-2002

Disk: KJG CD#4 - 2808A.DWG

Survey Date: 10-21-2002

Sheet 1 of 1 Sheets



TODD STATE #13

Located at 660' FNL and 660' FEL
 Section 2, Township 24 South, Range 31 East,
 N.M.P.M., Eddy County, New Mexico.

**basin
surveys**

focused on excellence
in the oilfield

P.O. Box 1786
 1120 N. West County Rd.
 Hobbs, New Mexico 88241
 (505) 393-7316 -- Office
 (505) 322-3074 -- Fax
basinsurveys.com

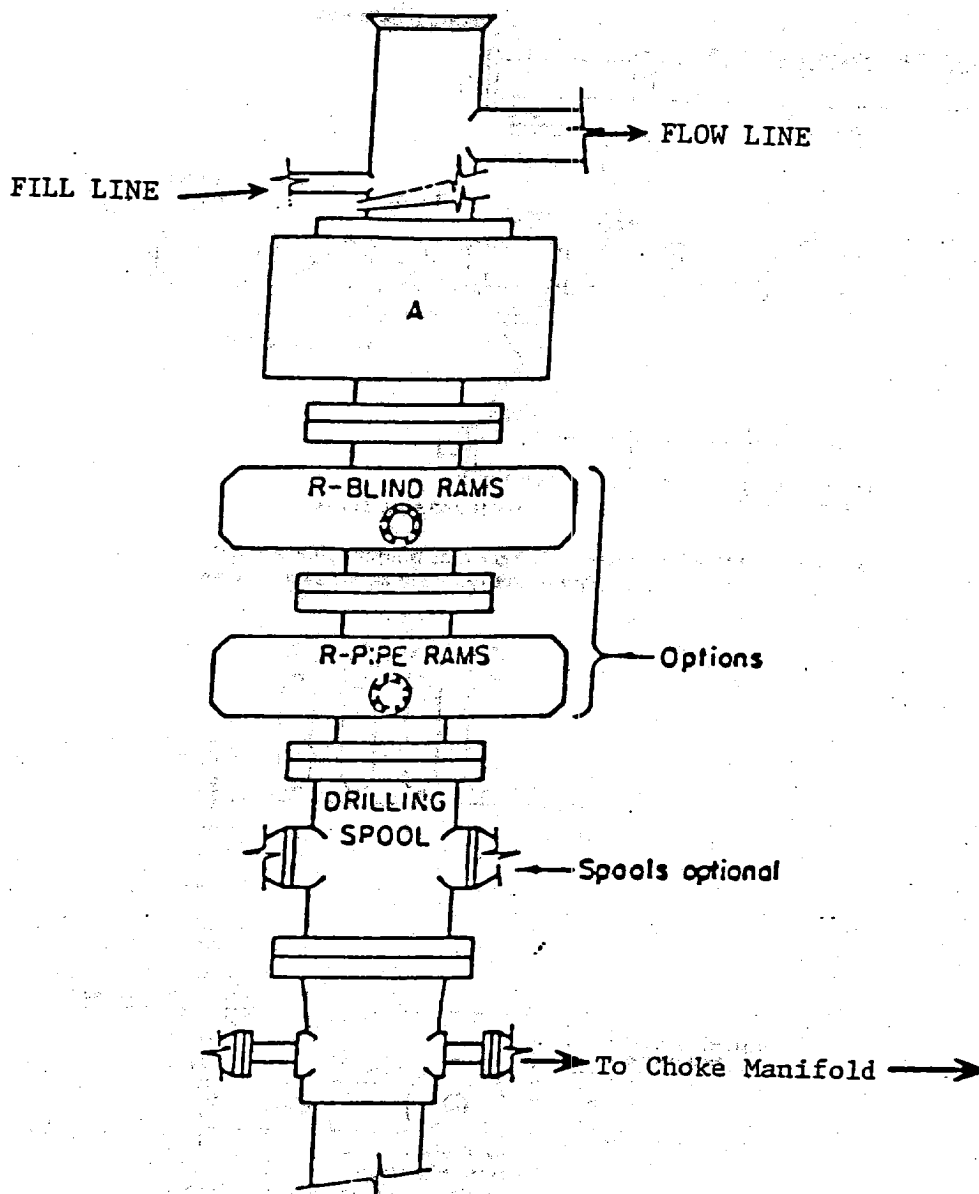
W.O. Number 2803AA -- K/G 0075

Survey Date: 10-21-2000

Scale: 1" = 2000'

Date: 10-22-2000

**RICKS
EXPLORATION
INC.**



ARRANGEMENT SRRA

5000 PSI

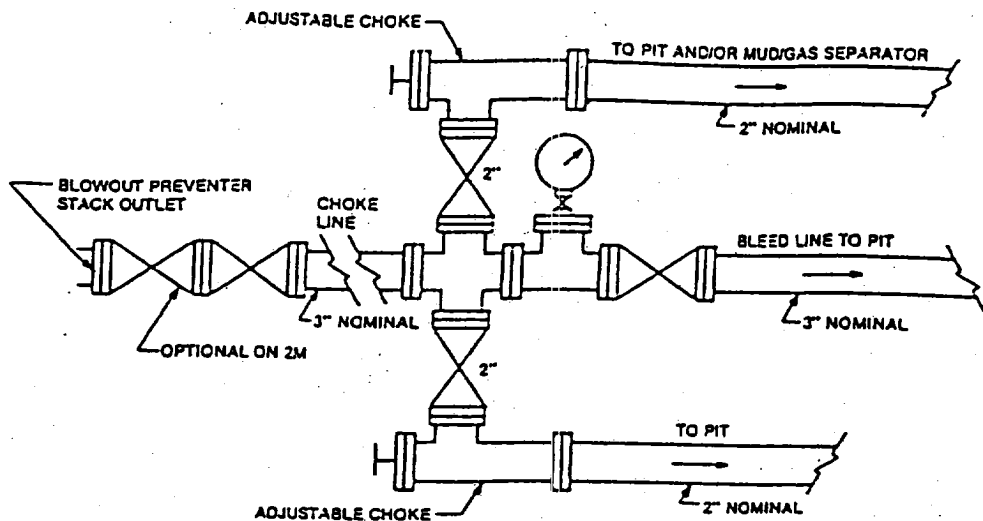


FIGURE K4-1. Typical choke manifold assembly for 2M and 3M rated working pressure service — surface installation.

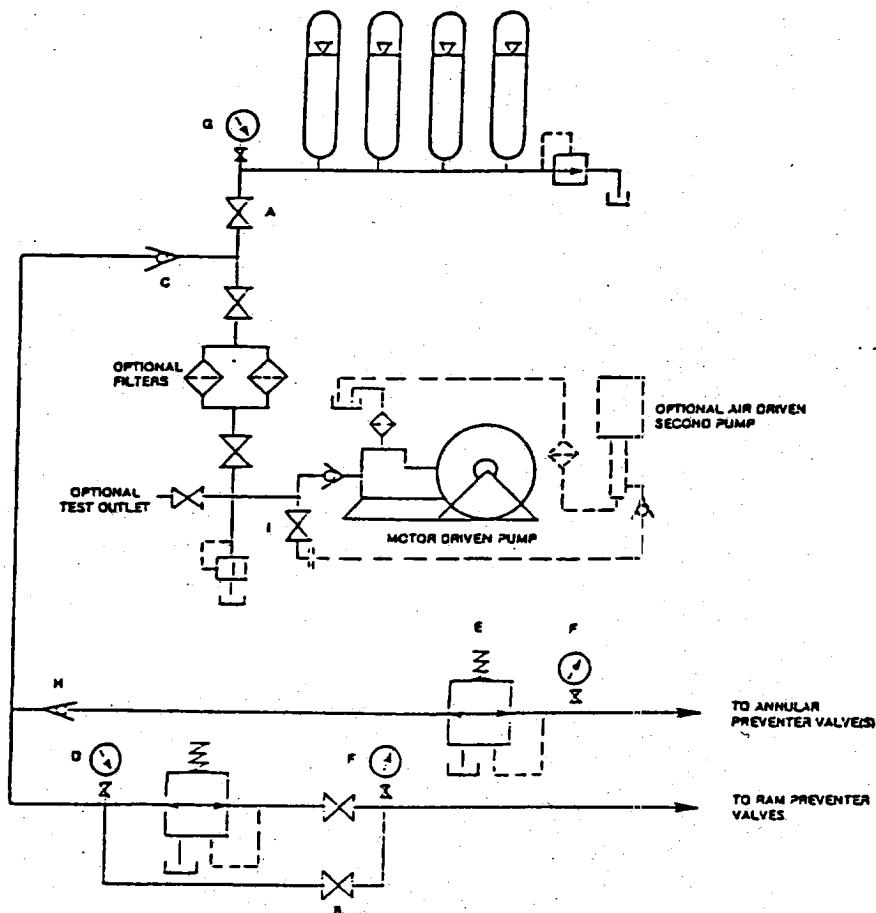


FIGURE K6-1. The schematic sketch of an accumulator system shows required and optional components.